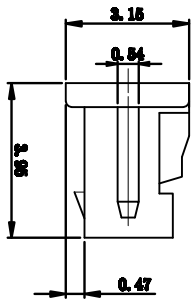
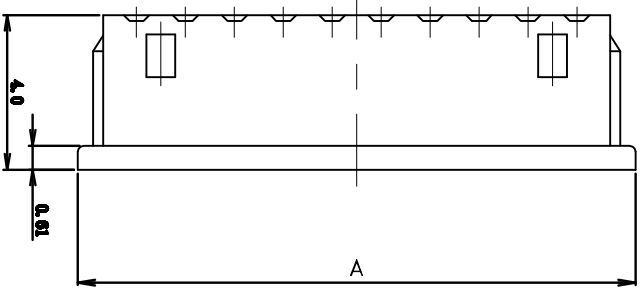
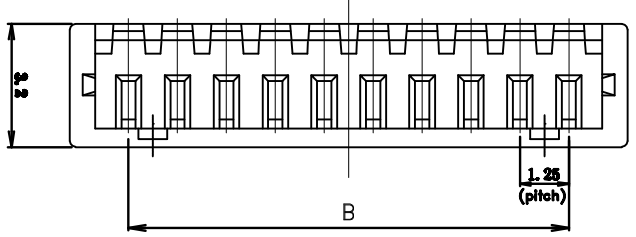
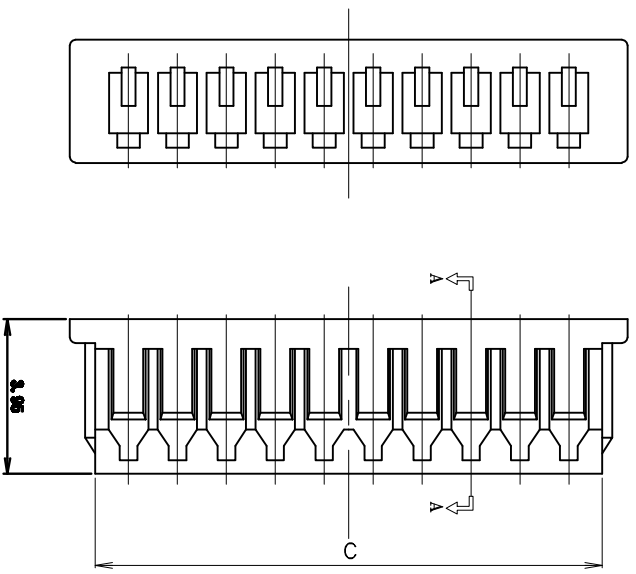


SPEC. A-A



SPECIFICATIONS

Current Rating: 1A AC/DC
 Pitch Between Poles: 1.25mm
 Voltag rating: 125V AC/DC
 Contact Resistance: 20MΩ max
 Temperature Range: -25℃ TO +85℃
 Insulation Resistance: 100MΩ min
 Withstand Voltage: 500V AC/minute

MATERIAL

Material: Nylon66 UL94V-2

Poles	Part No.	Dimension mm		
		A	B	C
2	1251H-2P	4.25	1.25	2.95
3	1251H-3P	5.50	2.50	4.20
4	1251H-4P	6.75	3.75	5.45
5	1251H-5P	8.00	5.00	6.70
6	1251H-6P	9.25	6.25	7.95
7	1251H-7P	10.50	7.50	9.20
8	1251H-8P	11.75	8.75	10.45
9	1251H-9P	13.00	10.00	11.70
10	1251H-10P	14.25	11.25	12.95
11	1251H-11P	15.50	12.50	14.20
12	1251H-12P	16.75	13.75	15.45
13	1251H-13P	18.00	15.00	16.70
14	1251H-14P	19.25	16.25	17.95
15	1251H-15P	20.50	17.50	19.20
16	1251H-16P	21.75	18.75	20.45

TOLERANCE TABLE

.0	±0.20
.00	±0.10
.000	±0.05

APPROVED:	DATE:	<p>深圳市炬科盟实业有限公司 Chantw/CHANKLEMENT INDUSTRY CO., LTD</p>
CHECKED:	DATE:	
DRAWN:	DATE:	TITLE:
LXF	2008-04-07	1251H-XP
CLIENT P/N		SCALE
/		free
UNIT	mm	REV.
FILE NO.	Chantw-1251-0005	A

X-ON Electronics

Largest Supplier of Electrical and Electronic Components

Click to view similar products for [Headers & Wire Housings](#) category:

Click to view products by [Cankemeng](#) manufacturer:

Other Similar products are found below :

[57102-F02-18ULF](#) [58102-G61-06LF](#) [0009485154](#) [009176003701906](#) [0050291907](#) [02.125.8002.8](#) [609-3404](#) [61062-3](#) [622-0430](#) [622-3653LF](#)
[63453-116](#) [636-1030](#) [636-1427](#) [636-3427](#) [636-4007](#) [641938-9](#) [644827-2](#) [65495-038](#) [65692-001LF](#) [65781-018](#) [65781-047](#) [65817-010LF](#)
[65817-015LF](#) [66207-023LF](#) [67016-026LF](#) [67095-007LF](#) [68631-112](#) [68645-018](#) [68648-049](#) [699319-000](#) [70.362.1628.0](#) [70-4210](#) [70-4226B](#)
[70-4853B](#) [707-5020](#) [707-5028](#) [71.350.2428.0](#) [71961-016LF](#) [733-134](#) [754199-000](#) [760-3052](#) [787-8014-00](#) [FCN-367T-T012/H](#) [80.063.4001.1](#)
[800-90-001-10-001000](#) [800-90-010-10-002000](#) [801-43-002-10-013000](#) [801-43-006-10-002000](#) [803-41-018-10-001000](#) [803-43-014-20-](#)
[001000](#)