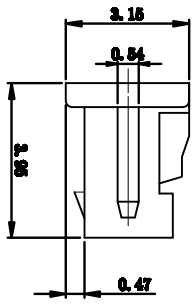
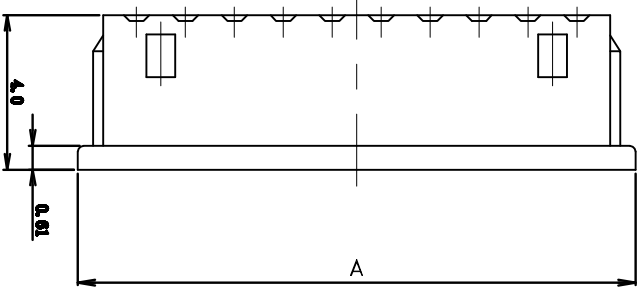
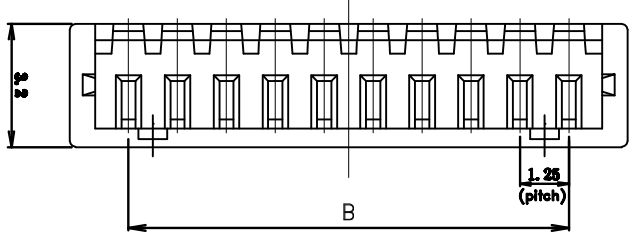
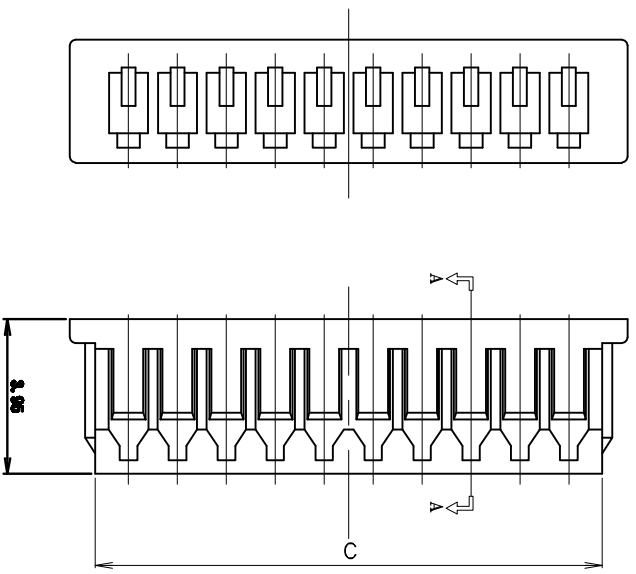


SPEC. A-A



**SPECIFICATIONS**

Current Rating: 1A AC/DC  
 Pitch Between Poles: 1.25mm  
 Voltag rating: 125V AC/DC  
 Contact Resistance: 20MΩ max  
 Temperature Range: -25℃ TO +85℃  
 Insulation Resistance: 100MΩ min  
 Withstand Voltage: 500V AC/minute

**MATERIAL**

Material: Nylon66 UL94V-2

| Poles | Part No.  | Dimension mm |       |       |
|-------|-----------|--------------|-------|-------|
|       |           | A            | B     | C     |
| 2     | 1251H-2P  | 4.25         | 1.25  | 2.95  |
| 3     | 1251H-3P  | 5.50         | 2.50  | 4.20  |
| 4     | 1251H-4P  | 6.75         | 3.75  | 5.45  |
| 5     | 1251H-5P  | 8.00         | 5.00  | 6.70  |
| 6     | 1251H-6P  | 9.25         | 6.25  | 7.95  |
| 7     | 1251H-7P  | 10.50        | 7.50  | 9.20  |
| 8     | 1251H-8P  | 11.75        | 8.75  | 10.45 |
| 9     | 1251H-9P  | 13.00        | 10.00 | 11.70 |
| 10    | 1251H-10P | 14.25        | 11.25 | 12.95 |
| 11    | 1251H-11P | 15.50        | 12.50 | 14.20 |
| 12    | 1251H-12P | 16.75        | 13.75 | 15.45 |
| 13    | 1251H-13P | 18.00        | 15.00 | 16.70 |
| 14    | 1251H-14P | 19.25        | 16.25 | 17.95 |
| 15    | 1251H-15P | 20.50        | 17.50 | 19.20 |
| 16    | 1251H-16P | 21.75        | 18.75 | 20.45 |

**TOLERANCE TABLE**

|      |       |
|------|-------|
| .0   | ±0.20 |
| .00  | ±0.10 |
| .000 | ±0.05 |

**APPROVED:** DATE: **Checked:** DATE: **Drawn:** LYP DATE: 2008-04-07

**CLIENT P/N:** / **SCALE:** free **REV:** A

**FILE NO.:** Chmtw-1251-0005

**深圳市炬科盟实业有限公司**  
**CHIMTWO CHANKLEMENT INDUSTRY CO., LTD**

## X-ON Electronics

Largest Supplier of Electrical and Electronic Components

*Click to view similar products for [Headers & Wire Housings](#) category:*

*Click to view products by [Cankemeng](#) manufacturer:*

Other Similar products are found below :

[57102-F02-18ULF](#) [58102-G61-06LF](#) [0009485154](#) [009176003701906](#) [0050291907](#) [02.125.8002.8](#) [609-3404](#) [61062-3](#) [622-0430](#) [622-3653LF](#)  
[63453-116](#) [636-1030](#) [636-1427](#) [636-3427](#) [636-4007](#) [641938-9](#) [644827-2](#) [65495-038](#) [65692-001LF](#) [65781-018](#) [65781-047](#) [65817-010LF](#)  
[65817-015LF](#) [66207-023LF](#) [67016-026LF](#) [67095-007LF](#) [68631-112](#) [68645-018](#) [68648-049](#) [699319-000](#) [70.362.1628.0](#) [70-4210](#) [70-4226B](#)  
[70-4853B](#) [707-5020](#) [707-5028](#) [71.350.2428.0](#) [71961-016LF](#) [733-134](#) [754199-000](#) [760-3052](#) [787-8014-00](#) [FCN-367T-T012/H](#) [80.063.4001.1](#)  
[800-90-001-10-001000](#) [800-90-010-10-002000](#) [801-43-002-10-013000](#) [801-43-006-10-002000](#) [803-41-018-10-001000](#) [803-43-014-20-](#)  
[001000](#)