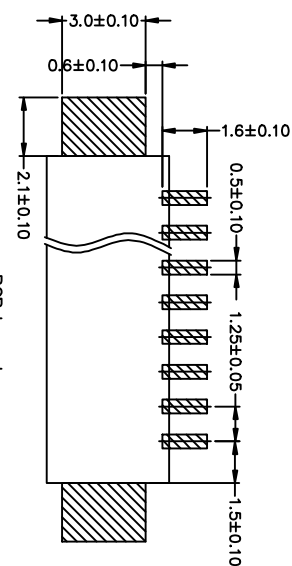
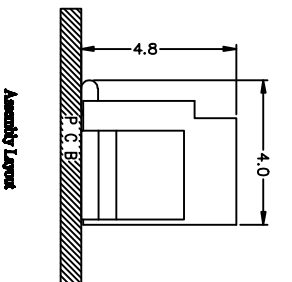


Section A-A



PCB Layout

**MATERIAL**  
**HOUSING: Nylon46 UL94V-0**  
**CONTACT: Phosphor Bronze**

**SPECIFICATION**

Current Rating: 1A AC/DC  
 Voltag Rating: 125V AC/DC  
 Insulation Resistance: 100MΩ Min.  
 Contact resistance: 20 mΩ Max.  
 Withstand Voltage: 500V AC/minute  
 Temperature Range: -25° C To +85° C  
 Pitch Between Poles: 1.25mm

Poles	Part No	DIMENSIONS		
		DIM A	DIM B	DIM C
2	1251N-2P	4.25	1.25	7.55
3	1251N-3P	5.50	2.50	8.80
4	1251N-4P	6.75	3.75	10.05
5	1251N-5P	8.00	5.00	11.30
6	1251N-6P	9.25	6.25	12.55
7	1251N-7P	10.50	7.50	13.80
8	1251N-8P	11.75	8.75	15.05
9	1251N-9P	13.00	10.00	16.30
10	1251N-10P	14.25	11.25	17.55
11	1251N-11P	15.50	12.50	18.80
12	1251N-12P	16.75	13.75	20.05
13	1251N-13P	18.00	15.00	21.30
14	1251N-14P	19.25	16.25	22.55
15	1251N-15P	20.50	17.50	23.80

TOLERANCE TABLE

.0	±0.20
.00	±0.10
.000	±0.05

APPROVED:	DATE:	 深圳市灿科盟实业有限公司 CHANTW CHANKLEMENT INDUSTRYCO., LTD
CHECKED:	DATE:	
DRAWN:	DATE:	TITLE:
LYP	2008-04-07	1251SMT-XP (立贴)
CLIENT P/N /		UNIT mm SCALE free
FILE NO.	Chantw-1251-0008	REV. A

## X-ON Electronics

Largest Supplier of Electrical and Electronic Components

*Click to view similar products for [Headers & Wire Housings](#) category:*

*Click to view products by [Cankemeng](#) manufacturer:*

Other Similar products are found below :

[95000-104TRLF](#) [10135584-644402LF](#) [DF62W-EP2022PCA](#) [95000-106TRLF](#) [DF62W-2022SCA](#) [DF62W-EP2022PC](#) [2203348](#) [DF62W-2022SC](#) [1084018](#) [1029039](#) [1084017](#) [802-10-012-10-002000](#) [1112640](#) [1112639](#) [891-007-9SS-BST1T](#) [000-34000](#) [0008550134](#) [0009482033](#) [0009507031](#) [57102-F02-18ULF](#) [57102-S06-03LF](#) [57202-S52-04LF](#) [PCN6-15S-2.5E](#) [0039019024](#) [58102-G61-06LF](#) [582553-1](#) [0009485154](#) [0009508121](#) [0022285053](#) [0050291907](#) [018731A](#) [LY20-4P-DT1-P1E-BR](#) [02.125.8002.8](#) [60101931](#) [60598-1 \(Cut Strip\)](#) [M1625-3R/100](#) [61062-3](#) [61082-181009](#) [CSU011177004](#) [636-1427](#) [638009-1](#) [641938-9](#) [641991-4](#) [644168-1](#) [644827-2](#) [647662-1](#) [65039-019ELF](#) [65692-001LF](#) [65781-018](#) [65781-047](#)