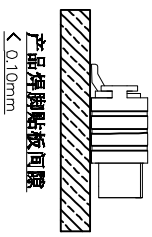
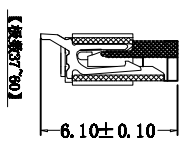
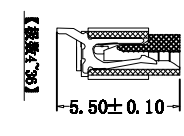
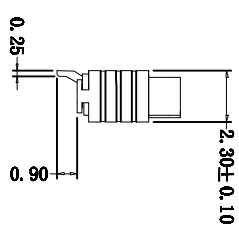
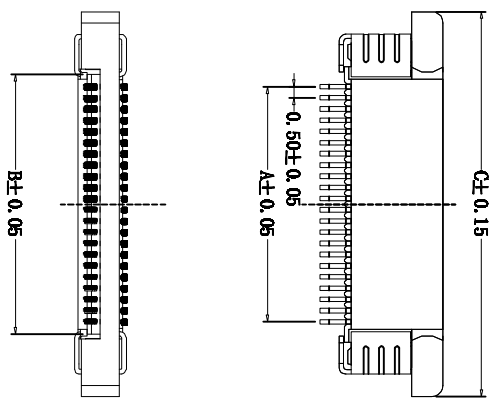
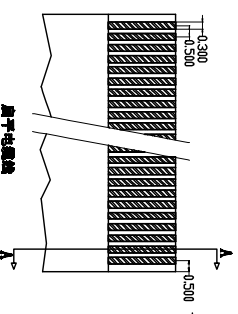
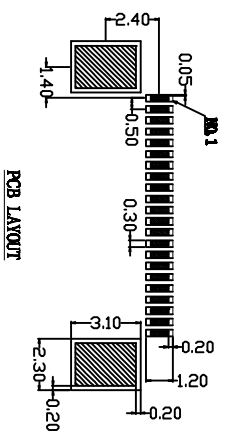


**技术参数 SPECIFICATIONS**  
 间距 (Pitch) : 0.5  
 极数 (Poles) : 4~60  
 额定电压 (Voltage rating): 50V DC/AC  
 额定电流 (Current rating) : 0.5A DC/AC  
 耐压值 (Withstand Voltage) : 500V  
 工作温度 (Working Temperature) : -25°C ~ +85°C  
 绝缘电阻 (Insulation Resistance) :  $\geq 500M\Omega$   
 接触电阻 (Contact resistance) :  $\leq 30m\Omega$   
 单面接触 (Single contact)

**材料 Material**  
 接触件 (Contact) : 铜合金  $t=0.2mm$  镀亚锡  
 焊片 (solder tab) : 锡膏  $t=0.2mm$  镀亚锡  
 塑胶主体 (Housing) : LCP 耐热树脂 (UL94V-0) Heat resistance plastic (UL94V-0)  
 滑块 (Slider) : PPS 耐热树脂 (UL94V-0) Heat resistance plastic (UL94V-0)



TOLERANCE TABLE

.0	±0.30
.00	±0.20
.000	±0.05

APPROVED:

DATE:

CHECKED:

DATE:

DRAWN:

DATE:

hh-H

2019-01-02

**深圳市灿科盟实业有限公司**  
 Ckmitw CHANKLEIMENT INDUSTRY CO., LTD

TITLE:  
 FPC0.5-XP 上接 抽拉式

PART. NO.	/
UNIT	mm
SCALE	free
REV.	A LX00

## X-ON Electronics

Largest Supplier of Electrical and Electronic Components

*Click to view similar products for [FFC & FPC Connectors](#) category:*

*Click to view products by [Cankemeng](#) manufacturer:*

Other Similar products are found below :

[00-6200-227-022-800](#) [006205250500825+](#) [006205280500825+](#) [FPH-1602G](#) [086222026001800](#) [52610-0675](#) [62674-201121DLF](#) [52746-1671-TR250](#) [10051922-1610EHLF](#) [10051922-2810EHLF](#) [686322124422](#) [XF3M-2915-1B-R100](#) [AYF353125A](#) [AYF530665TA](#) [AYF534065TA](#) [20FLH-RSM1-TB](#) [207356-1](#) [SFW12R-5STE9LF](#) [SFW18R-1STAE9LF](#) [SFW4R-5STE9LF](#) [52807-0430](#) [046283021002868+](#) [FFC05011-10SBB114W5M](#) [502250-8027](#) [67000-008LF](#) [200528-0260](#) [FH28K-10S-0.5SH](#) [FH52K-6S-0.5SH](#) [0.5K-DX-30PWB](#) [DS1020-08-10VBT12](#) [THD0515-34CL-GF](#) [X05A10L28G](#) [ECC2841061EU](#) [1.0K-DHQX-16PWB](#) [1.0K-DHQX-30PWB](#) [1775333-6](#) [10054365-202110ELF](#) [10054365-242110ELF](#) [10054365-282110ELF](#) [10064555-392220HLF](#) [59453-041110EBHLF](#) [59453-091110EDHLF](#) [62674-241141ALF](#) [62684-432100ALF](#) [62684-451100AHLF](#) [62684-5721N0ALF](#) [HFW11R-1STE1MTLF](#) [HFW12R-1STE9LF](#) [HFW14R-1STE9MTLF](#) [HFW18S-2STE9LF](#)