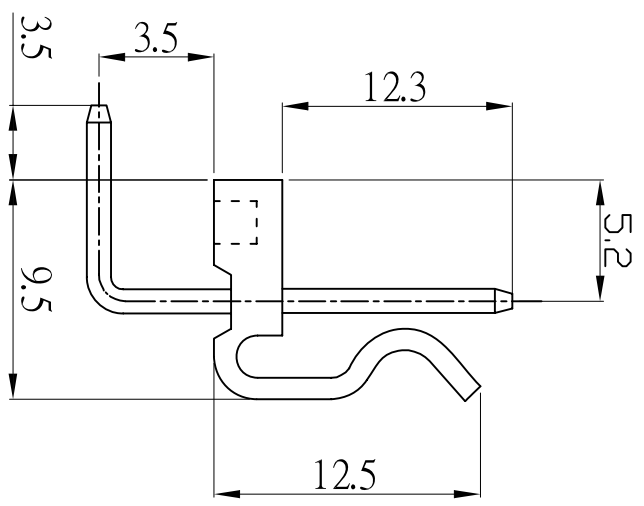


P.C.B. LAYOUT



SPECIFICATION

Current rating: 5A AC/DC
 Voltage rating: 250V AC/DC
 Contact resistance: 20mΩ max.
 Withstand voltage: 1500V AC/min.
 Insulation resistance: 1000MΩ/min.
 Temperature range: -25℃~+85℃

Material:

Part No:2~20
 Post:Brass.Tin/plated
 Base:Nylon66 UL94V-2

| Poles | Part NO. | Dimension(mm) | |
|-------|-----------|---------------|-------|
| | | A | B |
| 2 | 3961R-2P | 3.96 | 7.92 |
| 3 | 3961R-3P | 7.92 | 11.88 |
| 4 | 3961R-4P | 11.88 | 15.84 |
| 5 | 3961R-5P | 15.84 | 19.80 |
| 6 | 3961R-6P | 19.80 | 23.76 |
| 7 | 3961R-7P | 23.76 | 27.72 |
| 8 | 3961R-8P | 27.72 | 31.68 |
| 9 | 3961R-9P | 31.68 | 35.64 |
| 10 | 3961R-10P | 35.64 | 39.60 |
| 11 | 3961R-11P | 39.60 | 43.56 |
| 12 | 3961R-12P | 43.56 | 47.52 |
| 13 | 3961R-13P | 47.52 | 51.48 |
| 14 | 3961R-14P | 51.48 | 55.44 |
| 15 | 3961R-15P | 55.44 | 59.40 |
| 16 | 3961R-16P | 59.40 | 63.36 |
| 17 | 3961R-17P | 63.36 | 67.32 |
| 18 | 3961R-18P | 67.32 | 71.28 |
| 19 | 3961R-19P | 71.28 | 75.24 |
| 20 | 3961R-20P | 75.24 | 79.20 |

| | | |
|---------------------------|------------|---|
| APPROVED: | DATE: | C 深圳市灿科盟实业有限公司 CHANKEMENG INDUSTRIAL CO., LTD |
| CHECKED: | DATE: | |
| DRAWN: | DATE: | TITLE: |
| Iuli-Liu | 2016-12-17 | 3961R-XP |
| TOLERANCE TABLE | | |
| | ±0.20 | |
| | ±0.10 | |
| | ±0.05 | |
| | .0 | |
| | .00 | |
| | .000 | |
| CLIENT P/N | SCALE | UNIT |
| / | Free | mm |
| FILE NO. Ckmtw-3961-00013 | REV. A | WD00 |

X-ON Electronics

Largest Supplier of Electrical and Electronic Components

Click to view similar products for [Headers & Wire Housings](#) category:

Click to view products by [Cankemeng](#) manufacturer:

Other Similar products are found below :

[57102-F02-18ULF](#) [58102-G61-06LF](#) [0009485154](#) [009176003701906](#) [0050291907](#) [02.125.8002.8](#) [609-3404](#) [61062-3](#) [622-0430](#) [622-3653LF](#)
[63453-116](#) [636-1030](#) [636-1427](#) [636-3427](#) [636-4007](#) [641938-9](#) [644827-2](#) [65495-038](#) [65692-001LF](#) [65781-018](#) [65781-047](#) [65817-010LF](#)
[65817-015LF](#) [66207-023LF](#) [67016-026LF](#) [67095-007LF](#) [68631-112](#) [68645-018](#) [68648-049](#) [699319-000](#) [70.362.1628.0](#) [70-4210](#) [70-4226B](#)
[70-4853B](#) [707-5020](#) [707-5028](#) [71.350.2428.0](#) [71961-016LF](#) [733-134](#) [754199-000](#) [760-3052](#) [787-8014-00](#) [FCN-367T-T012/H](#) [80.063.4001.1](#)
[800-90-001-10-001000](#) [800-90-010-10-002000](#) [801-43-002-10-013000](#) [801-43-006-10-002000](#) [803-41-018-10-001000](#) [803-43-014-20-](#)
[001000](#)