

SURFBOARDS®



THE BREADBOARDING MEDIUM FOR SURFACE MOUNT™

33000 SERIES APPLICATION SPECIFIC ADAPTERS

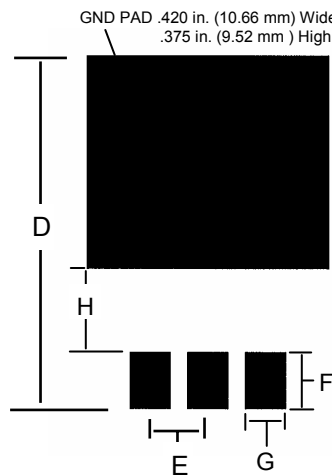
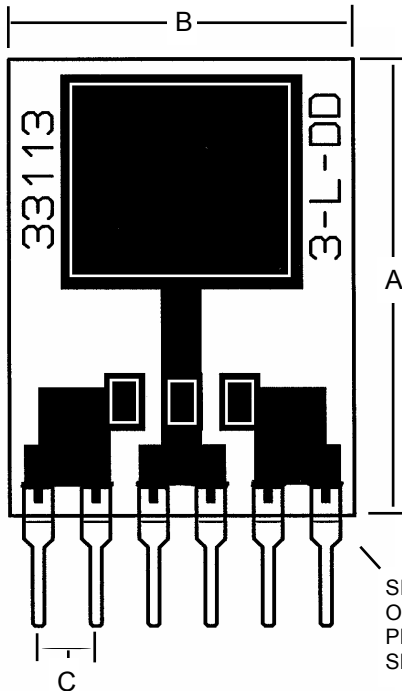
IDS33113

REV 1-2012

MODEL **33113**

FOR TO-263AB
3-LEAD D PACKAGE

ALWAYS CONSULT DEVICE DATA SHEET TO INSURE PROPER FIT



PINS ON .1 in. CENTERS PROVIDE COMPATIBILITY WITH BREADBOARDS AND SOCKETS. TWO PINS ARE PROVIDED FOR EACH DEVICE LEAD FOR GREATER CURRENT CAPACITY.

NOTE: CIRCUIT FOILS AND OUTPUT PINS MAY NOT BE SUITABLE FOR OPERATION AT HIGHEST RATED DEVICE CURRENT LEVELS. EXTREME TEMPERATURE RISE MAY RESULT IN FAILURE.

SINGLE-IN-LINE (SIP) PINS ON .1 in. CENTERS. TWO PER DEVICE LEAD. SEE PIN SPECS.

PIN SPECIFICATIONS / TOLERANCES

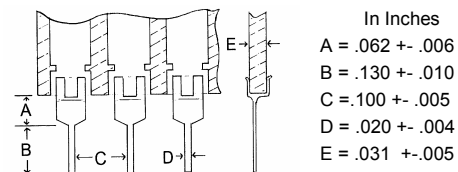


FIG.	INCHES	MM	NOTE:
A	.800	20.32	BOARD HEIGHT +/- .5mm .020in.
B	.600	15.24	BOARD WIDTH +/- .5mm .020in.
C	.100	2.54	SIP PIN SPACE +/- .20mm .008in.
D	.625	15.87	PAD (DEVICE) MAX
E	.100	2.54	DEVICE LEAD PITCH
F	.100	2.54	PAD LENGTH
G	.070	1.77	PAD WIDTH
H	.150	3.81	GAP



BOARD SPECIFICATIONS

BOARD MATERIAL: .8mm, +/- .13mm .031in+-.005 in. Thick G-10 FR-4 Glass Epoxy or equivalent.
CIRCUITS: 1 oz. Copper with RoHS compliant Lead Free solder coating. Patten Position on board +/- .5mm .020in.

TOLERANCES: If not noted are +/- 20%. Nominal values are given. Controlling unit is Millimeters. Values rounded to nearest decimal. Slight Variations due to manufacturing process can occur.

Copyright 1997-2012 by Capital Advanced Technologies, Inc. All rights reserved. Surfboards is a registered trademark of Capital Advanced Technologies, Inc. The Breadboarding medium for surface mount, and the Leaf Circuit Logo are trademarks of Capital Advanced Technologies, Inc. All other trademarks are the property of their respective owners. Specifications, availability, and price is subject to change without notice. All information given is believed to be accurate but is not guaranteed. The user of information given or products represented by such information is responsible for determining the suitability of said information or products for a given purpose. No inducement is intended or permission granted for infringement of any patent or unauthorized use of any intellectual property of Capital Advanced Technologies or others.

CAPITAL ADVANCED TECHNOLOGIES, INC.

CAROL STREAM, ILLINOIS. USA.

PHONE 630-690-1696

WWW.CapitalAdvanced.Com

FAX 630-690-2498

X-ON Electronics

Largest Supplier of Electrical and Electronic Components

Click to view similar products for [capital advanced technologies manufacturer](#):

Other Similar products are found below :

[6010](#) [US-2007](#) [33208](#) [33305](#) [US-4007](#) [US-5016](#) [6306](#) [US-5014](#) [6816](#) [33106](#) [6520](#) [33306](#) [US-5012](#) [US-3014](#) [US-3008](#) [US-2008](#) [33110](#)
[US-3012](#) [6405](#) [US-3010](#) [33008](#) [US-1010](#) [US-5008](#) [33310](#) [US-2012](#) [US-4012](#) [US-1009](#) [33003](#) [9163](#) [9082](#) [33708](#) [US-1008](#) [US-4010](#) [US-](#)
[2006](#) [33410](#) [6115](#) [US-1006](#) [6112](#) [33405](#) [33105](#) [US-1007](#) [6908](#) [6106](#) [6109](#) [6410](#) [6008](#) [33010](#) [33308](#) [6303](#) [33205](#)