

# SURFBOARDS®



THE BREADBOARDING MEDIUM FOR **SURFACE MOUNT™**

## 33000 SERIES APPLICATION SPECIFIC ADAPTERS

**IDS33117**  
REV 1-2012

MODEL **33117**

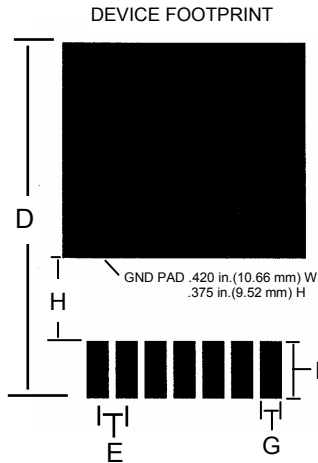
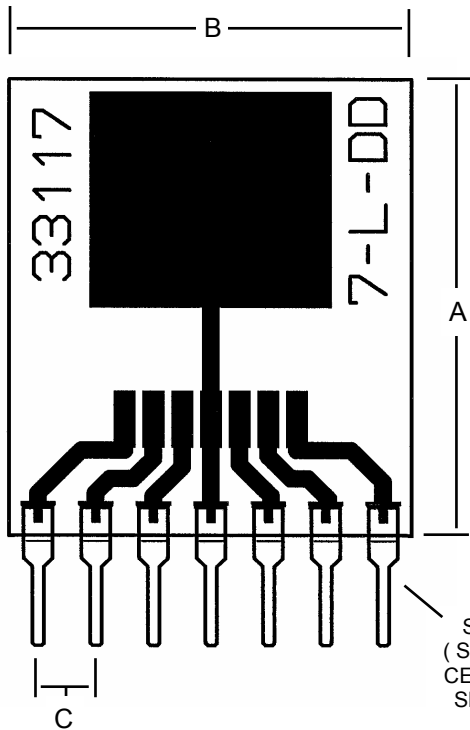
ACCEPTS  
THESE  
DEVICES



PARTIAL  
LISTING

**TO-263 7 LEAD  
7- LEAD DD PKG.  
MICREL SPAK-07L  
ON SEMI D2PAK 7 LEAD**

ALWAYS CONSULT DEVICE DATA SHEET TO INSURE PROPER FIT



PINS ON .1 in. CENTERS  
PROVIDE COMPATIBILITY  
WITH BREADBOARDS AND  
SOCKETS.

USE FOR PROTOTYPING,  
DEVICE EVALUATION OR  
TEST, SMD TO THROUGH  
HOLE CONVERSION.

**NOTE: CIRCUIT FOILS AND  
OUTPUT PINS MAY NOT BE  
SUITABLE FOR OPERATION  
AT HIGHER RATED DEVICE  
CURRENTS. EXTREME  
TEMPERATURE RISE MAY  
CAUSE FAILURE.**

SINGLE-IN-LINE  
(SIP) PINS ON .1 in  
CENTERS. SEE PIN  
SPECIFICATIONS

### PIN SPECIFICATIONS / TOLERANCES

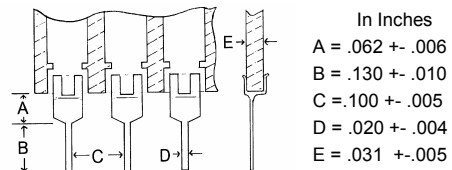


FIG.	INCHES	MM	NOTE:
A	.800	20.32	BOARD HEIGHT +/- .5mm .020in.
B	.700	17.78	BOARD WIDTH +/- .5mm .020in.
C	.100	2.54	SIP PIN SPACE +/- .20mm .008in.
D	.625	15.87	PAD ( DEVICE ) MAX
E	.050	1.27	DEVICE LEAD PITCH
F	.100	2.54	PAD LENGTH
G	.035	.889	PAD WIDTH
H	.150	3.81	GAP



### BOARD SPECIFICATIONS

**BOARD MATERIAL:** .8mm, +/- .13mm .031in +/- .005 in.  
Thick G-10 FR-4 Glass Epoxy or equivalent.  
**CIRCUITS:** 1 oz. Copper with RoHS compliant Lead  
Free solder coating. Patten Position on board +/-  
.5mm .020in.

**TOLERANCES:** If not noted are +/- 20%. Nominal values are given.  
Controlling unit is Millimeters. Values rounded to nearest decimal. Slight  
Variations due to manufacturing process can occur.

Copyright 1997-2012 by Capital Advanced Technologies, Inc. All rights reserved. Surfboards is a registered trademark of Capital Advanced Technologies, Inc. The Breadboarding medium for surface mount, and the Leaf Circuit Logo are trademarks of Capital Advanced Technologies, Inc. All other trademarks are the property of their respective owners. Specifications, availability, and price is subject to change without notice. All information given is believed to be accurate but is not guaranteed. The user of information given or products represented by such information is responsible for determining the suitability of said information or products for a given purpose. No inducement is intended or permission granted for infringement of any patent or unauthorized use of any intellectual property of Capital Advanced Technologies or others.

**CAPITAL ADVANCED TECHNOLOGIES, INC.**

CAROL STREAM, ILLINOIS. USA.

PHONE 630-690-1696

WWW.CapitalAdvanced.Com

FAX 630-690-2498

## **X-ON Electronics**

Largest Supplier of Electrical and Electronic Components

*Click to view similar products for [capital advanced technologies manufacturer](#):*

Other Similar products are found below :

[6010](#) [US-2007](#) [33208](#) [33305](#) [US-4007](#) [US-5016](#) [6306](#) [US-5014](#) [6816](#) [33106](#) [6520](#) [33306](#) [US-5012](#) [US-3014](#) [US-3008](#) [US-2008](#) [33110](#)  
[US-3012](#) [6405](#) [US-3010](#) [33008](#) [US-1010](#) [US-5008](#) [33310](#) [US-2012](#) [US-4012](#) [US-1009](#) [33003](#) [9163](#) [9082](#) [33708](#) [US-1008](#) [US-4010](#) [US-](#)  
[2006](#) [33410](#) [6115](#) [US-1006](#) [6112](#) [33405](#) [33105](#) [US-1007](#) [6908](#) [6106](#) [6109](#) [6410](#) [6008](#) [33010](#) [33308](#) [6303](#) [33205](#)