

C Series

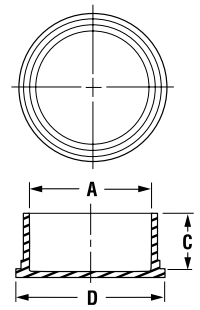
Straight-Sided Utility Caps



C Series caps are straight-sided, thin-walled closures designed to protect threaded connectors. The flanged end allows for easy installation and removal in difficult to reach areas. This versatile design is ideal for a variety of threaded and non-threaded applications.

- Applicable specifications: NAS 831

Material: Low-Density Polyethylene **Color:** Red



EC Series

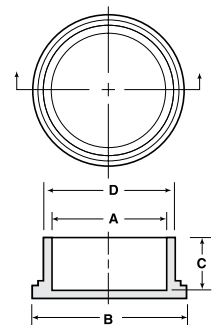
Caps for Threaded Connectors



EC Series caps are designed to fit 36- and 68-pin Champ 050 series connectors and 50-pin Champ-type connectors.

- Can be installed over threads or cylindrical surfaces
- Applicable specifications: NAS 813, NAS 831

Material: Low-Density Polyethylene **Color:** Red



Straight-Sided Utility Caps **C Series**

Caplugs No.	Dimensions							Packaging	
	To Cap Thread Size	A		C		D		Carton Quantity	Mini Pak Quantity
		In	mm	In	mm	In	mm		
C-2	1/2	.476	12.09	.50	12.70	.72	18.29	7500	1500
C-6	5/8	.600	15.24	.50	12.70	.84	21.34	5000	1000
C-8	3/4	.724	18.39	.50	12.70	.94	23.88	5000	1000
C-10	7/8	.849	21.56	.50	12.70	1.09	27.69	3000	600
C-12	1	.974	24.74	.50	12.70	1.22	30.99	2500	500
C-14	1-1/8	1.097	27.86	.56	14.22	1.34	34.04	2500	500
C-16	1-3/16	1.168	29.67	.56	14.22	1.41	35.81	1500	300
C-18	1-1/4	1.221	31.01	.56	14.22	1.44	36.58	1500	300
C-20	1-3/8	1.344	34.14	.56	14.22	1.59	40.39	1500	300
C-22	1-7/16	1.408	35.76	.56	14.22	1.66	42.16	1000	200
C-24	1-1/2	1.467	37.26	.56	14.22	1.69	42.93	1000	200
C-26	1-3/4	1.716	43.59	.56	14.22	2.00	50.80	1000	200
C-28	2	1.964	49.89	.62	15.75	2.22	56.39	500	100
C-30	2-1/4	2.210	56.13	.62	15.75	2.44	61.98	500	100
C-32	2-1/2	2.460	62.48	.62	15.75	2.69	68.33	500	100
C-34	2-3/4	2.730	69.34	.62	15.75	2.96	75.18	500	100
C-36	3	2.980	75.69	.62	15.75	3.22	81.79	500	100
C-38	4	3.922	99.62	1.00	25.40	4.19	106.43	250	50
C-40	5	4.900	124.46	1.25	31.75	5.12	130.05	300	60

Caps for Threaded Connectors **EC Series**

Caplugs No.	Dimensions								Packaging		
	To Cap Nominal Thread Size	A		B		C		D		Carton Quantity	Mini Pak Quantity
		In	mm	In	mm	In	mm	In	mm		
EC-4	1/4	.246	6.25	.48	12.19	.50	12.70	.31	7.87	5000	1000
EC-M8	M8	.309	7.85	.55	13.97	.56	14.22	.37	9.40	5000	1000
EC-5	5/16	.308	7.82	.55	13.97	.56	14.22	.37	9.40	5000	1000
EC-6	3/8	.369	9.37	.62	15.75	.50	12.70	.43	10.92	5000	1000
EC-8	1/2	.480	12.19	.74	18.80	.50	12.70	.54	13.72	5000	1000
EC-9	9/16	.551	14.00	.78	19.81	.44	11.18	.61	15.49	5000	1000
EC-10	5/8	.605	15.37	.84	21.34	.50	12.70	.66	16.89	5000	1000
EC-12	3/4	.720	18.29	.97	24.64	.50	12.70	.77	19.68	5000	1000
EC-14	7/8	.850	20.83	1.13	28.70	.50	12.70	.90	22.99	5000	1000
EC-15	-	.930	23.62	1.20	30.47	.50	12.70	1.01	25.65	3000	600
EC-16	1	.973	24.71	1.22	30.99	.50	12.70	1.03	26.29	2500	500
EC-18	1-1/8	1.093	27.76	1.33	33.78	.56	14.22	1.15	29.35	2500	500
EC-19	1-3/16	1.188	30.18	1.40	35.56	.56	14.22	1.23	31.24	2500	500
EC-20	1-1/4	1.231	31.27	1.47	37.09	.56	14.22	1.30	33.05	2500	500
EC-22	1-3/8	1.340	34.04	1.59	40.39	.56	14.22	1.41	35.81	2500	500
EC-23	1-7/16	1.428	36.27	1.65	41.91	.56	14.22	1.46	37.08	1000	200
EC-24	1-1/2	1.463	37.16	1.70	43.18	.56	14.22	1.53	38.94	2500	500
EC-25	1-9/16	1.528	38.81	1.73	43.94	.48	12.19	1.59	40.39	2500	500
EC-26	1-5/8	1.613	40.97	1.91	48.51	.55	19.97	1.71	43.43	1000	200
EC-28	1-3/4	1.715	43.56	1.95	49.53	.56	14.22	1.79	45.47	1000	200
EC-32	2	1.965	49.91	2.22	56.39	.56	14.22	2.04	51.82	1000	200
EC-36	2-1/4	2.215	56.26	2.43	61.72	.60	15.24	2.29	58.17	1000	200
EC-40	2-1/2	2.456	62.38	2.68	68.07	.62	15.75	2.52	64.01	1000	200
EC-44	2-3/4	2.720	69.09	2.96	68.32	.60	15.24	2.81	71.42	500	100
EC-48	3	2.960	75.18	3.23	82.05	.60	15.24	3.05	77.47	500	100
EC-64	4	3.940	100.08	4.16	105.67	1.00	25.40	4.00	101.60	200	40
EC-80	5	4.944	125.58	5.12	130.05	1.25	31.75	5.00	127.00	150	30

X-ON Electronics

Largest Supplier of Electrical and Electronic Components

Click to view similar products for [Standard Circular Connector](#) category:

Click to view products by [Caplugs](#) manufacturer:

Other Similar products are found below :

[5M2530B10P](#) [600259N006](#) [600273N007](#) [6134-336-13149](#) [6134-337-11149](#) [6134-337-2390](#) [6134-341-17149](#) [6280-4SG-516](#) [6280-7SG-3DC](#)
[6290](#) [6291A](#) [66200A-10](#) [680-SMG](#) [681-PMG](#) [CXS3102A14S2P](#) [CXS3102A181S](#) [7251-5SG-300](#) [7271-6SG-300](#) [7282-3PG-300-CH3](#) [75-](#)
[474618-01S](#) [75-474618-04P](#) [75-474618-04S](#) [799539-000](#) [MI8-SE](#) [805-005-07NF11-19PC](#) [805-005-07NF15-7PA](#) [8280-4PG-516](#) [8280-7PG-](#)
[519](#) [8282-5PG-519](#) [836783-1](#) [MP-4102-25P-C](#) [862256-1](#) [864019-2](#) [866857-1](#) [867865-1](#) [PT01SP-14-18P](#) [PT08P-14-5S](#) [PTSF06SE-14-12S](#)
[120-1833-000](#) [QCM019PC2DC012B](#) [1-2069279-1](#) [121583-0217](#) [121667-0020](#) [129591AU](#) [1000B BULK](#) [RD10A16-19-P6CS051/1](#)
[RD10A20-31-P8CS051/1](#) [RD16A14-12-S6CS051/2](#) [1301240290](#) [1301240347](#) [1301860202](#)