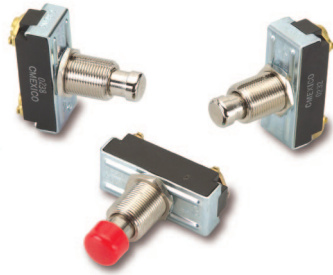
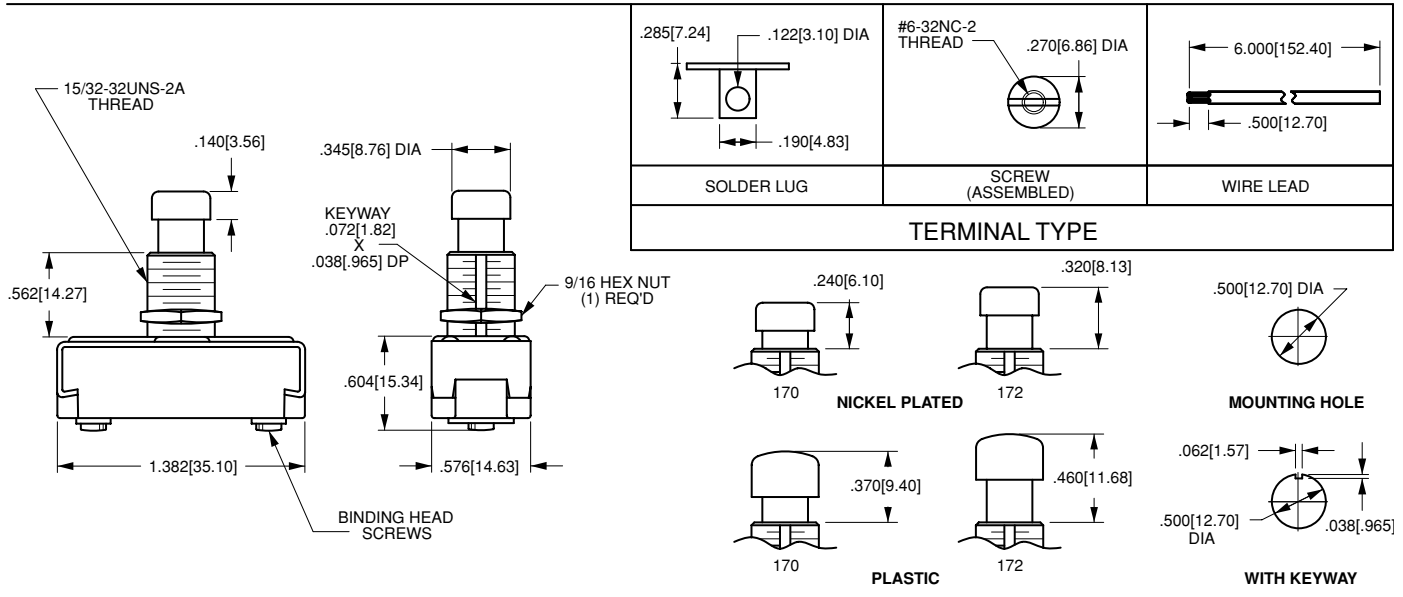


170/172-Series Pushbutton Switches



The 170/172-Series pushbutton switches are single pole, high amperage switches suitable for shallow back panel applications. These switches are momentary action and require an actuation force of 2.5 lbs. The 170/172-Series switches are equipped with a slow-make, slow-break contact mechanism and are rated at 15 amps at 125VAC.

Dielectric Strength
UL/CSA: 1000V - live to dead metal parts
Electrical Life
25,000 cycles- momentary
Mechanical Life
100,000 cycles
Operating Temperature
32°F to 185°F (0°C to +85°C)



172 - **CBL**

¹ Base Part Number ² Cap Style/Color

1 BASE PART NUMBER: SERIES/POLES/CIRCUITRY/RATING/TERMINATION			
<i>Single Pole</i> 10A 250VAC; 15A 125VAC	solder lugs	wire leads	screw terminals
ON-(OFF) ²	170-B	170-A	170
OFF-(ON) ²	172-B	172-A	172

2 CAP STYLE/COLOR¹	
CBL	black plastic
CGN	green plastic
CRD	red plastic
CWH	white plastic

NOTES
 1 When selection 2 is left blank, a standard nickel plated plunger is supplied.
 () Indicates momentary function.

X-ON Electronics

Largest Supplier of Electrical and Electronic Components

Click to view similar products for [Pushbutton Switches](#) category:

Click to view products by [Carling](#) manufacturer:

Other Similar products are found below :

[LW1L-M1C10V-A](#) [LW2L-A1C20M-GD](#) [LW2L-M1C20M-A](#) [60324L](#) [M7E-HRN2](#) [67021K512](#) [67081K512X](#) [701PB580](#) [719-5504-000](#)
[MDPSSGLFS](#) [810KSV30B](#) [MML21KA3ABK](#) [MML23KA3AC05K-001](#) [MML23KW3AA01W](#) [8418K2](#) [8646AB6X718UL](#) [8646ABUL](#)
[FSDWH](#) [9001KXRK](#) [9001T8BK](#) [9533CD4+U574+U4922](#) [1203MRA](#) [A22EM01S](#) [A595](#) [1202A6](#) [12037A2ULCSA](#) [1203A2UL](#) [ABD122N-](#)
[B](#) [1211390004](#) [ABN111-Y](#) [ABN400-R](#) [1211500044](#) [1211580012](#) [1212MRA](#) [1232A6NF](#) [RA3CSH6A](#) [1241.1183.7047](#) [1241.2511](#)
[1241.3428](#) [1223A2ULCSA](#) [1223MRA](#) [1232AX2119](#) [1241.1183.8000](#) [1241.1183.8029](#) [1241.2506](#) [1241.2606](#) [12MA6](#) [1301940184](#)
[RELBARF6X10\(PLASTIC\)](#) [13435AG](#)