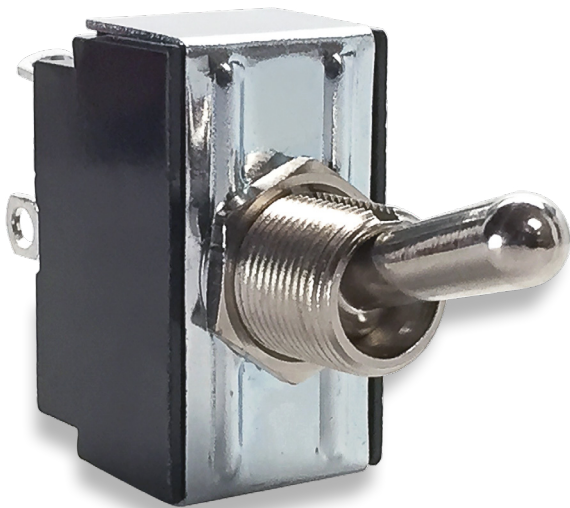


# G-Series

Toggle Switches

[PRODUCT WEBPAGE](#)

*request sample, configure part*



General purpose workhorses with options tailored to meet most any need. Ratings to 20A 277VAC, international approvals, various actuator, bushing, termination, and circuit choices allow this toggle switch to easily integrate into a variety of different applications. The G-Series is appropriate for usage in low voltage DC applications.

**1-2**  
Poles

**3-20**  
Amps

**125, 250**  
VAC

**12-24**  
VDC

## Typical Applications

- Marine
- Food Service
- Generator
- Industrial Control
- Office Automation

# Tech Specs

## Dielectric Strength

UL/CSA: 1000V - live to dead metal parts & opposite polarity  
 VDE: 4000V - live to dead metal parts;  
 1250V - opposite polarity & across open contacts

## Electrical Life

50,000 cycles - maintained  
 25,000 cycles - momentary

## Operating Temperature

32°F to 185°F (0° to 85°C)

# Ordering Scheme

Sample Part Number **2GM51 - 73**

Selection 1 2

### 1. SERIES <sup>3</sup>

Single Pole in Double Pole base			Double Pole			
10A 250VAC, 15A 125VAC, 3/4 HP 125-250VAC	solder lug	.250 tab	screw term.	solder lug	.250 tab	screw term.
<b>2GA50</b>	<b>2GA51</b>	<b>2GA54</b>	On-None-Off	<b>2GK50</b>	<b>2GK51</b>	<b>2GK54</b>
<b>6GA5A</b>	<b>6GA5B</b>	<b>6GA5E</b>	(On)-None-Off	<b>6GK5A</b>	<b>6GK5B</b>	<b>6GK5E</b>
<b>6GA5L</b>	<b>6GA5M</b>	<b>6GA5S</b>	On-None-(Off)	<b>6GK5L</b>	<b>6GK5M</b>	<b>6GK5S</b>
<b>2GB50</b>	<b>2GB51</b>	<b>2GB54</b>	On-None-On	<b>2GL50</b>	<b>2GL51</b>	<b>2GL54</b>
<b>6GB5A</b>	<b>6GB5B</b>	<b>6GB5E</b>	On-None-(On)	<b>6GL5A</b>	<b>6GL5B</b>	<b>6GL5E</b>
<b>2GC50</b>	<b>2GC51</b>	<b>2GC54</b>	On-Off-On	<b>2GM50</b>	<b>2GM51</b>	<b>2GM54</b>
<b>6GC5A</b>	<b>6GC5B</b>	<b>6GC5E</b>	On-Off-(On)	<b>6GM5A</b>	<b>6GM5B</b>	<b>6GM5E</b>
<b>6GC5L</b>	<b>6GC5M</b>	<b>6GC5S</b>	(On)-Off-(On)	<b>6GM5L</b>	<b>6GM5M</b>	<b>6GM5S</b>

10A 250VAC, 15A 125VAC, 12 (6)A 250VAC T85/55 ENEC/VDE Approved!  
**2GA90** **2GA91** - On-None-Off **2GK90** **2GK91**  
**2GB90** **2GB91** - On-None-On **2GL90** **2GL91**  
**2GC90** **2GC91** - On-Off-On **2GM90** **2GM91**  
 Additional ratings up to 20A 125VAC, 12A 250VAC, 1HP 120-240 VAC available.  
 Consult factory for specifics.

### 2. ACTUATOR STYLE <sup>4</sup>

	unsealed	sealed	toggle length	bushing length
Bat	<b>73</b>	<b>78</b>	0.687	0.465
Paddle <sup>5</sup>	<b>NBL3</b>	<b>NBL8</b>	0.687	0.465
Bat <sup>2</sup>	<b>D-3B-B</b>	-	0.687	0.379
Paddle <sup>2</sup>	-	<b>D-4B-B</b>	0.687	0.379

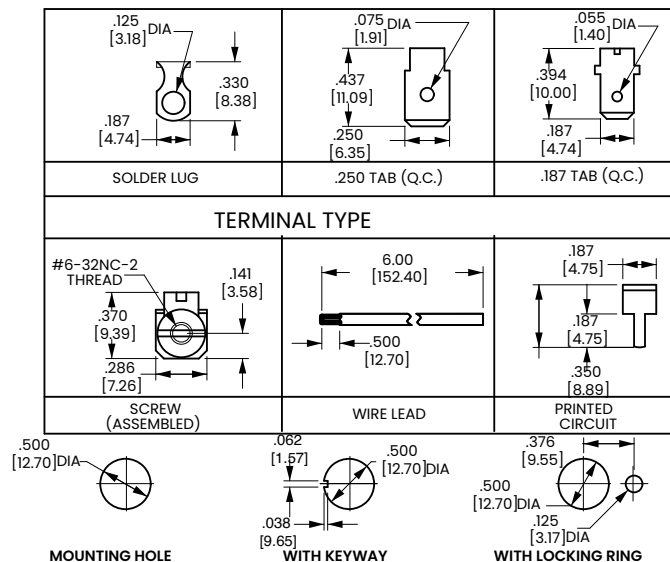
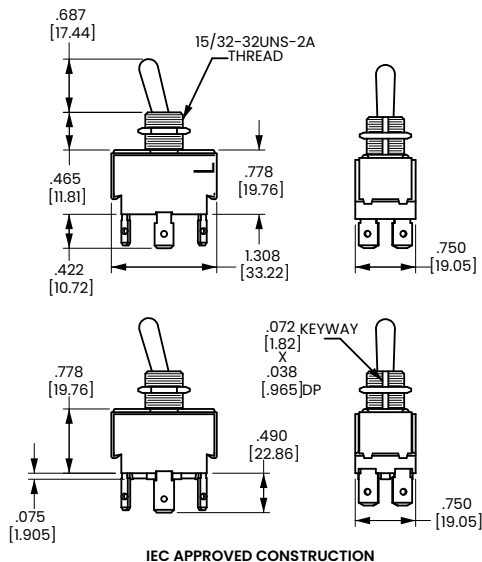
- Notes:  
 1 Not available with 73 or NBL3 style toggles, T55 with 78 and NBL8 style toggles.  
 2 All nylon bushing and toggle.  
 3 Consult factory for .187 tab, wire lead and combination screw/tab/solder lug termination callouts.  
 4 Additional actuator options available. Consult factory.  
 5 Nylon toggle with black ebanol plated bushing.  
 ( ) Indicates momentary function.

[Configure Complete Part Number >](#)

[Browse Standard Parts >](#)

# Dimensional Specs

inches [millimeters]



## Authorized Sales Representatives and Distributors

Click on a region of the map below to find your local representatives and distributors or visit [www.carlingtech.com/findarep](http://www.carlingtech.com/findarep).



## About Carling

Founded in 1920, Carling Technologies is a leading manufacturer of electrical and electronic switches and assemblies, circuit breakers, electronic controls, power distribution units, and multiplexed power distribution systems. With six ISO9001 and IATF16949 registered manufacturing facilities and technical sales offices worldwide, Carling Technologies Sales, Service and Engineering teams do much more than manufacture electrical components, they engineer powerful solutions! To learn more about Carling please visit [www.carlingtech.com/company-profile](http://www.carlingtech.com/company-profile).

To view all of Carling's environmental, quality, health & safety certifications please visit [www.carlingtech.com/environmental-certifications](http://www.carlingtech.com/environmental-certifications).

© Carling Technologies, Inc.

3. Carling is a registered trademark of Carling Technologies, Inc. in the U.S. and other countries.

## X-ON Electronics

Largest Supplier of Electrical and Electronic Components

*Click to view similar products for [Toggle Switches](#) category:*

*Click to view products by [Carling](#) manufacturer:*

Other Similar products are found below :

[8928K478](#) [8A1-C-222](#) [020017-13](#) [60012L](#) [6006L](#) [CS115W](#) [CS120W](#) [6663](#) [7101SPDV30BE](#) [7103SDV30BE](#) [7105D](#) [7108P3YAV2BE](#)  
[71YY50282](#) [7300K36](#) [7301K38](#) [7306K36](#) [7310K36](#) [7506K4](#) [7592K6](#) [7660K12](#) [7691K14](#) [7700K1](#) [8391K108](#) [8396K108](#) [8811K17](#)  
[8812K14](#) [8824K14](#) [8828K13](#) [8835K3](#) [8858K44](#) [PS83-121G](#) [1-1825192-0](#) [A201SCWZB04](#) [A207SYCB04](#) [A208J61ZQ0004](#) [A221T1TCQ](#)  
[A323S1CWZQ](#) [A423S1CWZG-M8](#) [1201W](#) [12156AX408](#) [12147AGKX679](#) [12246X778](#) [12TW49-3D](#) [130312](#) [13037L](#) [13001X](#)  
[AE101MD1W4B04](#) [AE208SD1W4B04](#) [MS24659-22D](#) [MS27407-5](#)