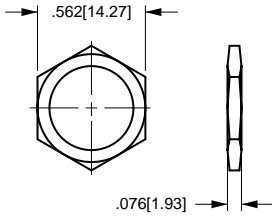
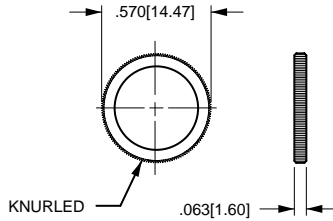


**Bushing Accessories**

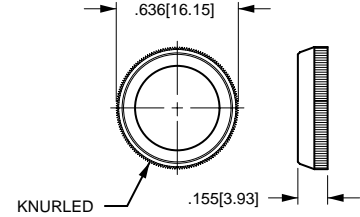
The hardware options and accessories listed below were specifically designed to be used with Carlingswitch toggle and pushbutton switches. To make it easier for you to select the required hardware, we have identified the finish material. The drawings are representative of the actual products. When other hardware options are required, please consult factory.



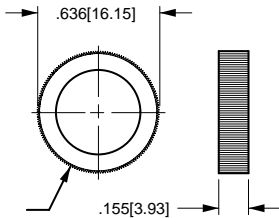
**STANDARD HEXAGON  
BACKUP**  
.562" X .076"  
[14.27] X [1.93]  
NICKEL - 380-08602  
BLACK - 380-08606



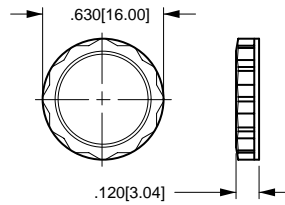
**STANDARD FACENUT**  
.570" X .063"  
[14.47] X [1.60]  
NICKEL - 380-08693  
BLACK - 380-08694



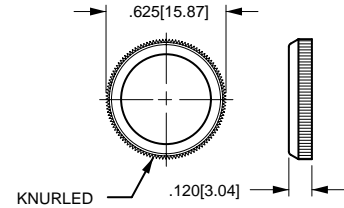
**"DRESS" FACENUT**  
.636" X .155"  
[16.15] X [3.93]  
NICKEL - 380-08810  
BLACK - 380-08811



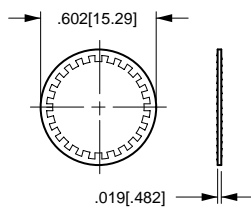
**SHOULDER  
"DRESS" FACENUT**  
.636" X .155"  
[16.15] X [3.93]  
BLACK - 380-08819



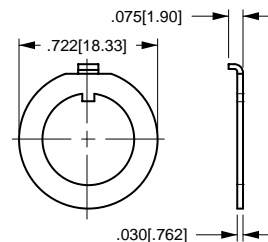
**PLASTIC FACENUT**  
(Fits 9/16" and 14mm wrenches)  
.630" X .120"  
[16.00] X [3.04]  
BLACK - 384-17131



**PLASTIC FACENUT**  
(Wrench supplied N/C)  
.625" X .120"  
[15.87] X [3.04]  
BLACK - 384-17126-001  
RED 384-17126-002  
WHITE - 384-17126-003



**LOCKWASHER**  
NICKEL-PLATED - 728-15907



**LOCKING RING**  
ZINC - 728-15946  
BLACK - 728-15947

### Bushing Accessories

#### BRASS LOCKNUTS

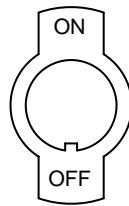
PART NO.	DIMENSIONS, IN.		PLATING
	O.D.	WIDTH	
<b>380-08603</b>	.562	.076	DULL NICKEL
<b>380-08657</b>	.625	.076	NICKEL
<b>380-08666</b>	.562	.094	NICKEL
<b>380-08668</b>	.562	.094	BLACK
<b>380-08675</b>	.500	.060	NICKEL
<b>380-08755</b>	.625	.180	NICKEL

#### BRASS FACENUTS

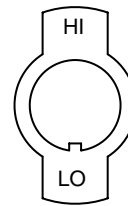
PART NO.	DIMENSIONS, IN.		PLATING
	O.D.	WIDTH	
<b>380-08717</b>	.562	.094	NICKEL
<b>380-08719</b>	.562	.094	BLACK
<b>380-08784</b>	.500	.060	NICKEL
<b>380-08792</b>	.625	.167	NICKEL

All indicator plates are nickel-plated steel. Odd keyway locations, alternate imprints and plating available on special order. Contact factory for minimum quantities and specifications.

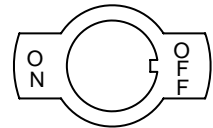
ALL PLATES SHOWN FIT 15/32" (.465[11.81]) BUSHINGS



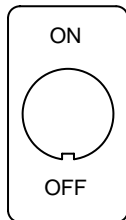
**YO1**  
272-06747



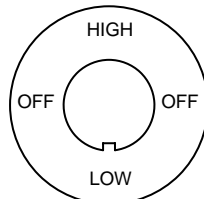
**YO2**  
272-06764



**Y51**  
272-06842



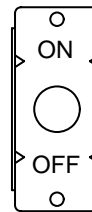
**Y101**  
272-06935



**Y311**  
272-07258



**Y500**  
272-07293



## X-ON Electronics

Largest Supplier of Electrical and Electronic Components

*Click to view similar products for [Switch Hardware](#) category:*

*Click to view products by [Carling](#) manufacturer:*

Other Similar products are found below :

[893102000](#) [LZZ1A](#) [0098.9234](#) [61-9707.7](#) [61-9771.0](#) [M2PA-5011](#) [635401](#) [6PA104](#) [6PA113](#) [6PA147-E6](#) [6PA148-E6](#) [6PA32](#) [6PA9](#) [700106](#)  
[700109](#) [700201A56](#) [700303A56](#) [700701264](#) [700C1GRY](#) [700C2GRN](#) [704-6001](#) [704.960.4](#) [704.960.9](#) [704.965.1](#) [704.965.2](#) [704.965.6](#)  
[704.966.0](#) [7089-3](#) [71M1048](#) [757200264](#) [778000A56](#) [79215938](#) [MHU35](#) [MHU37](#) [825.003.011](#) [825.005.011](#) [825.053.011](#) [825.055.011](#)  
[826.000.071](#) [827.020.011](#) [827.400.021](#) [835.900.023](#) [MML52C10C](#) [MML52E10C](#) [MML72EEK](#) [MML92HGH](#) [MML93K](#) [84211M02CNNS](#)  
[84211M02LGRS](#) [84211M02LNNX3](#)