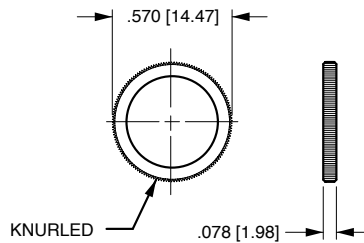


Bushing Accessories

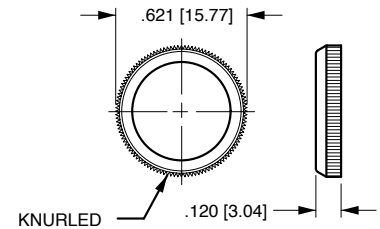
The hardware options and accessories listed below were specifically designed to be used with toggle and pushbutton switches. The drawings are representative of the actual products. When other hardware options are required, please consult factory.



STANDARD HEXNUT
 .562 in. [14.27 mm] X .076 in. [1.93 mm]
 NICKEL: 380-08602
 BLACK: 380-08606



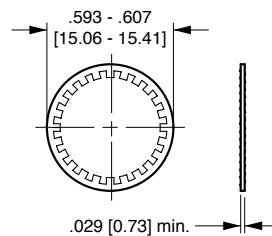
STANDARD FACENUT
 .570 in. [14.47 mm] X .078 in. [1.98 mm]
 NICKEL: 380-08693
 BLACK: 380-08694



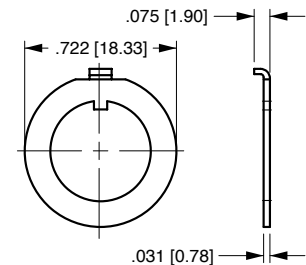
PLASTIC FACENUT
 (Wrench Supplied N/C)
 .625 in. [15.87 mm] X .120 in. [3.04 mm]
 BLACK: 384-17126-001
 RED: 384-17126-002
 WHITE: 384-17126-003



DRESS FACENUT
 .636 in. [16.15 mm] X .155 in. [3.93 mm]
 NICKEL: 380-08810
 BLACK: 380-08811



LOCKWASHER
 NICKEL-PLATED: 728-15907



LOCKING RING
 ZINC: 728-15946
 BLACK: 728-15947

All indicator plates are nickel-plated steel. Odd keyway locations, alternate imprints and plating available on special order. Contact factory for minimum quantities and specifications.



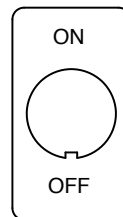
YO1
 272-06747



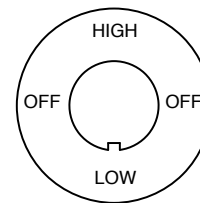
YO2
 272-06764



Y51
 272-06842



Y101
 272-06935



Y311
 272-07258



Y500
 272-07293

ALL PLATES SHOWN FIT 15/32" (.465 [11.81]) BUSHINGS



X-ON Electronics

Largest Supplier of Electrical and Electronic Components

Click to view similar products for [Switch Hardware](#) category:

Click to view products by [Carling](#) manufacturer:

Other Similar products are found below :

[893102000](#) [LZZ1A](#) [0098.9234](#) [61-9707.7](#) [61-9771.0](#) [M2PA-5011](#) [635401](#) [6PA104](#) [6PA113](#) [6PA147-E6](#) [6PA148-E6](#) [6PA32](#) [6PA9](#) [700106](#)
[700109](#) [700201A56](#) [700303A56](#) [700701264](#) [700C1GRY](#) [700C2GRN](#) [704-6001](#) [704.960.4](#) [704.960.9](#) [704.965.1](#) [704.965.2](#) [704.965.6](#)
[704.966.0](#) [7089-3](#) [71M1048](#) [757200264](#) [778000A56](#) [79215938](#) [MHU35](#) [MHU37](#) [825.003.011](#) [825.005.011](#) [825.053.011](#) [825.055.011](#)
[826.000.071](#) [827.020.011](#) [827.400.021](#) [835.900.023](#) [MML52C10C](#) [MML52E10C](#) [MML72EEK](#) [MML92HGH](#) [MML93K](#) [84211M02CNNS](#)
[84211M02LGRS](#) [84211M02LNNX3](#)