

# 700/800-Series

## ROTARY SWITCHES

The 700 and 800-Series are single pole multi-position, general purpose rotary switches. These switches feature a nylon actuator in a metal clad construction along with a self-cleaning silver plated contact design. The 700 and 800-Series are typically used in applications requiring multi-position speed controls, such as electric fans.



### Product Highlights:

- ♦ Ratings to 3A 250VAC, 6A 125VAC
- ♦ Up to 8 available detent positions
- ♦ Double "D" bushing mount
- ♦ Sturdy metal clad construction

### Typical Applications:

- ♦ Small Appliance
- ♦ Industrial Control
- ♦ Marine



**Dielectric Strength**

UL/CSA: 1000V (minimum)

**Base Material**

Steel/Zinc Plate

**Insulation Resistance**

100 Megohms (minimum)

**Actuator Material**

Brass/Nickel Plate

**700-1A - BL**

<sup>1</sup>  
Base Part Number

<sup>2</sup>  
Knob Color

**1 BASE PART NUMBER: SERIES / POLES / CIRCUITRY 1 / RATING / TERMINATION 2**

**2A 250VAC; 4A 125VAC; 1A 125V**

Solder Lugs	.250 Tabs	Position 1	Position 2	Position 3	Position 4	
-	<b>700-A</b>	OFF	ON	ON	ON	
<b>700-1</b>	<b>700-1A</b>	OFF	ON	-	-	
<b>700-2</b>	<b>700-2A</b>	OFF	ON	ON	ON	repeating for 8 positions
<b>700-3</b>	<b>700-3A</b>	OFF	ON	ON	OFF	
<b>700-4</b>	<b>700-4A</b>	OFF	ON	ON	-	
<b>700-5</b>	<b>700-5A</b>	OFF	ON	OFF	-	
<b>700-6</b>	<b>700-6A</b>	-	ON	OFF	ON	
<b>700-7</b>	<b>700-7A</b>	-	ON	ON	-	
<b>700-8</b>	<b>700-8A</b>	-	ON	ON	ON	
<b>700-9</b>	<b>700-9A</b>	OFF	ON	OFF	ON	

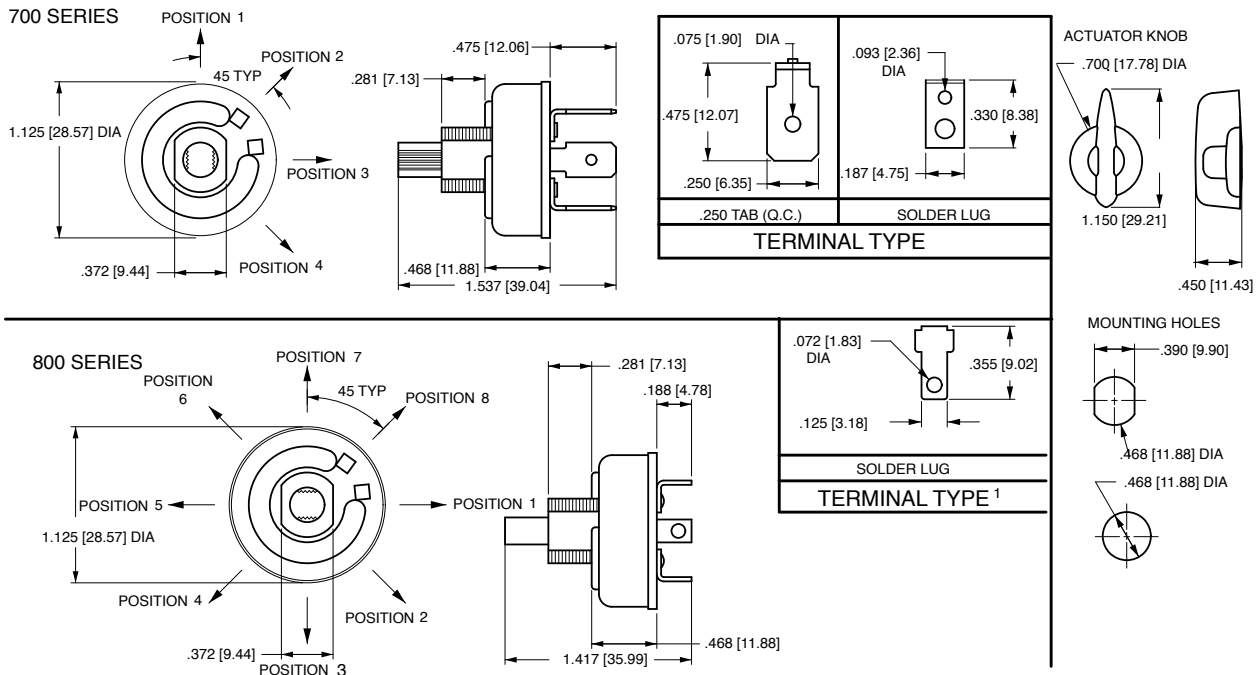
**3A 250VAC; 6A 125VAC**

Switch Positions	OFF Position
<b>800-2</b> 2 positions	<b>800-A</b> 1st position
<b>800-3</b> 3 positions	<b>800-A2</b> 2nd position
<b>800-4</b> 4 positions	<b>800-A3</b> 3rd position
<b>800-5</b> 5 positions	<b>800-A4</b> 4th position
<b>800-6</b> 6 positions	<b>800-A5</b> 5th position
<b>800-7</b> 7 positions	<b>800-A6</b> 6th position
<b>800-8</b> 8 positions	<b>800-A7</b> 7th position
	<b>800-A8</b> 8th position

**2 ACTUATOR COLOR**

**BL** Black

- Notes:  
 1 700-2 and 700-2A feature 8 detent positions.  
 2 800-Series terminal is a combination solder lug and quick connect.



- Notes:  
 1. Terminal is combination solder lug and quick connect.

\*Manufacturer reserves the right to change product specification without prior notice.

## Authorized Sales Representatives and Distributors

Click on a region of the map below to find your local representatives and distributors or visit [www.carlingtech.com/findarep](http://www.carlingtech.com/findarep).



## About Carling

Founded in 1920, Carling Technologies is a leading manufacturer of electrical and electronic switches and assemblies, circuit breakers, electronic controls, power distribution units, and multiplexed power distribution systems. With four ISO registered manufacturing facilities and technical sales offices worldwide, Carling Technologies Sales, Service and Engineering teams do much more than manufacture electrical components, they engineer powerful solutions! To learn more about Carling please visit [www.carlingtech.com/company-profile](http://www.carlingtech.com/company-profile).

To view all of Carling's environmental, quality, health & safety certifications please visit [www.carlingtech.com/environmental-certifications](http://www.carlingtech.com/environmental-certifications)

## **Worldwide Headquarters**

Carling Technologies, Inc.  
60 Johnson Avenue, Plainville, CT 06062  
**Phone:** 860.793.9281 **Fax:** 860.793.9231  
**Email:** sales@carlingtech.com

**Northern Region Sales Office:** nrsm@carlingtech.com  
**Southeast Region Sales Office:** sersm@carlingtech.com  
**Midwest Region Sales Office:** mrsm@carlingtech.com  
**West Region Sales Office:** wrsm@carlingtech.com  
**Latin America Sales Office:** larsm@carlingtech.com

## **Asia-Pacific Headquarters**

Carling Technologies, Asia-Pacific Ltd.,  
Suite 1607, 16/F Tower 2, The Gateway,  
Harbour City, 25 Canton Road,  
Tsimshatsui, Kowloon, Hong Kong  
**Phone:** Int + 852-2737-2277 **Fax:** Int + 852-2736-9332  
**Email:** sales@carlingtech.com.hk

**Shenzhen, China:** shenzhen@carlingtech.com  
**Shanghai, China:** shanghai@carlingtech.com  
**Pune, India:** india@carlingtech.com  
**Kaohsiung, Taiwan:** taiwan@carlingtech.com  
**Yokohama, Japan:** japan@carlingtech.com

## **Europe | Middle East | Africa Headquarters**

Carling Technologies LTD  
4 Airport Business Park, Exeter Airport,  
Clyst Honiton, Exeter, Devon, EX5 2UL, UK  
**Phone:** Int + 44 1392.364422 **Fax:** Int + 44 1392.364477  
**Email:** ltd.sales@carlingtech.com

**Germany:** gmbh@carlingtech.com  
**France:** sas@carlingtech.com



**Carling Technologies®**

Innovative Designs. Powerful Solutions.

## X-ON Electronics

Largest Supplier of Electrical and Electronic Components

*Click to view similar products for [Rotary Switches](#) category:*

*Click to view products by [Carling](#) manufacturer:*

Other Similar products are found below :

[57HS22-02-2-06N](#) [57M22-02B16N](#) [57M22-09A16N](#) [58J1007](#) [58J8A45-01B05N](#) [59M18-02A20N](#) [M3786/39-3BA](#) [M3786/39-LMC](#)  
[M3786/4-0007](#) [M3786/4-0073](#) [M3786/4-0182](#) [M3786/4-0640](#) [M3786/4-0873](#) [M3786/4-0881](#) [M3786/4-3187](#) [M3786/4-3267](#) [M3786/4-5272](#)  
[M3786/4-5568](#) [M3786/4-5876](#) [M3786/4-6029](#) [71ESF30-05204N](#) [MC06L1NCGF](#) [FA201BKGN](#) [84986-26](#) [9003K2C003GA](#) [PLR3251](#)  
[PLR3262](#) [PS3](#) [A019305](#) [A019306](#) [A019501](#) [A165W-T2AR](#) [R2AA2133NNNN](#) [R2AA4455NNNN](#) [R2BB4455NNNN](#) [ACSNO-6123-FB-](#)  
[C6002](#) [DR75-AMSF-10R-B](#) [14-520.0360](#) [BCK1006](#) [1703.3201](#) [HW1MS-0202-101](#) [C6P0206N-A](#) [24002-03S](#) [A019109](#) [A029101](#) [A165W-](#)  
[T3MR](#) [A22NS-3BM-NRA-G120-NN](#) [ACSNO-129-YB-C1014](#) [ACSNO-134-RR-YB-C1005](#) [ACSNO-353-SB-C3016](#)