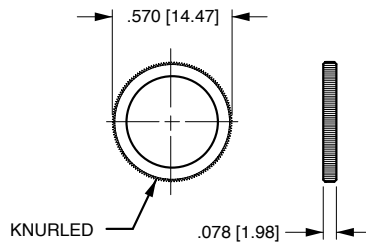


## Bushing Accessories

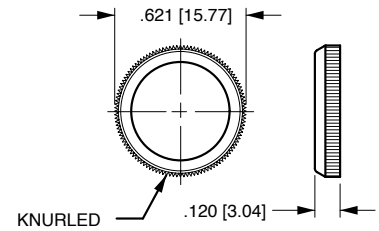
The hardware options and accessories listed below were specifically designed to be used with toggle and pushbutton switches. The drawings are representative of the actual products. When other hardware options are required, please consult factory.



**STANDARD HEXNUT**  
 .562 in. [14.27 mm] X .076 in. [1.93 mm]  
 NICKEL: 380-08602  
 BLACK: 380-08606



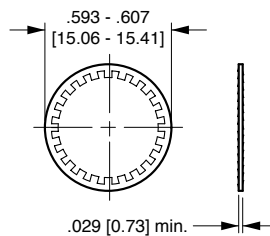
**STANDARD FACENUT**  
 .570 in. [14.47 mm] X .078 in. [1.98 mm]  
 NICKEL: 380-08693  
 BLACK: 380-08694



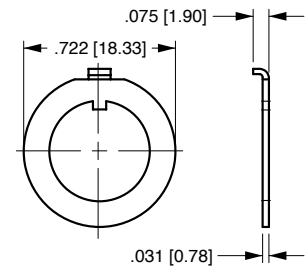
**PLASTIC FACENUT**  
 (Wrench Supplied N/C)  
 .625 in. [15.87 mm] X .120 in. [3.04 mm]  
 BLACK: 384-17126-001  
 RED: 384-17126-002  
 WHITE: 384-17126-003



**DRESS FACENUT**  
 .636 in. [16.15 mm] X .155 in. [3.93 mm]  
 NICKEL: 380-08810  
 BLACK: 380-08811



**LOCKWASHER**  
 NICKEL-PLATED: 728-15907

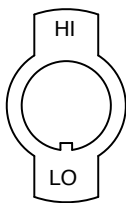


**LOCKING RING**  
 ZINC: 728-15946  
 BLACK: 728-15947

All indicator plates are nickel-plated steel. Odd keyway locations, alternate imprints and plating available on special order. Contact factory for minimum quantities and specifications.



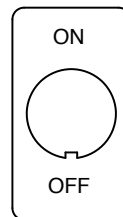
**Y01**  
 272-06747



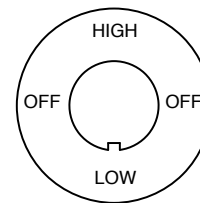
**Y02**  
 272-06764



**Y51**  
 272-06842



**Y101**  
 272-06935



**Y311**  
 272-07258



**Y500**  
 272-07293

ALL PLATES SHOWN FIT 15/32" (.465 [11.81]) BUSHINGS



## X-ON Electronics

Largest Supplier of Electrical and Electronic Components

*Click to view similar products for [Toggle Switches](#) category:*

*Click to view products by [Carling](#) manufacturer:*

Other Similar products are found below :

[8A1-C-222](#) [60012L](#) [6006L](#) [6663](#) [7101MD9V30GE](#) [7101SPDV30BE](#) [7103SDV30BE](#) [7105D](#) [7108P3YAV2BE](#) [71YY50282](#)  
[7201MD9AVBE](#) [7301K38](#) [7306K36](#) [7310K36](#) [7314K36](#) [7506K4](#) [7592K6](#) [7691K14](#) [7700K1](#) [8396K108](#) [8824K14](#) [8828K13](#) [G2VX](#) [G3VX](#)  
[PS83-121G](#) [A101MD9AB04](#) [A101SD9AB04](#) [A101SDCQ04](#) [A103SD9AQ04](#) [A107TZB04](#) [A123P32YZQ](#) [A123S1YZG](#) [A127S1YCQ](#) [1-](#)  
[1825192-0](#) [A131S1YZQ](#) [A201SCWZB04](#) [A207SYCB04](#) [A208J61ZQ0004](#) [A221K12KAG](#) [A221S1YZQ](#) [A221T1TCQ](#) [A232K12KZQ](#)  
[A232M1YCQ](#) [A323S1CWZQ](#) [A423S1CWZG-M8](#) [A423S1YZQ](#) [12149A-3V](#) [12156AX408](#) [12147AGKX679](#) [12149AD2G0383VX408](#)