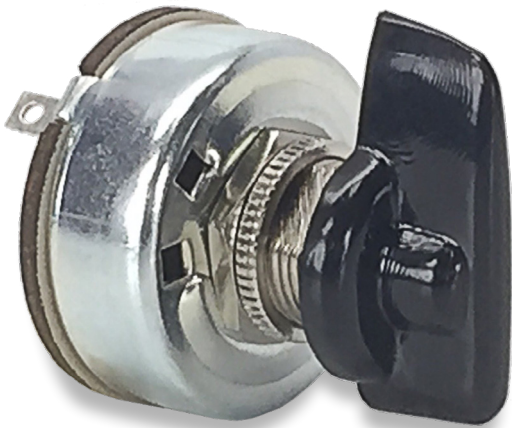
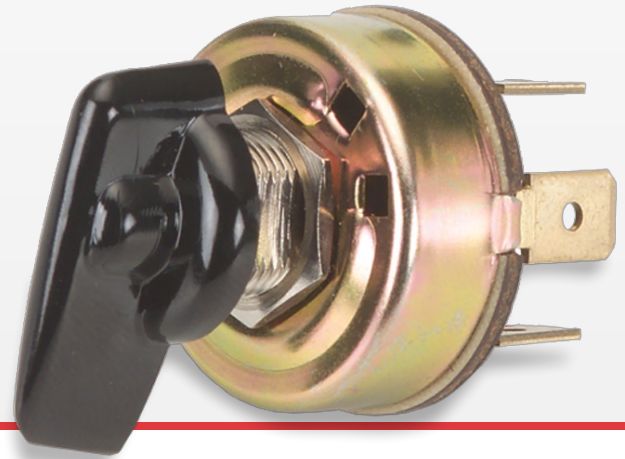


# 700/800-Series

Rotary Switches

[PRODUCT WEBPAGE](#)

*request sample, configure part*



The 700 and 800-Series are single pole multi-position, general purpose rotary switches. These switches feature a nylon actuator in a metal clad construction along with a self-cleaning silver plated contact design. The 700 and 800-Series are typically used in applications requiring multi-position speed controls, such as electric fans.

---

<b>1</b>	<b>1-6</b>	<b>125, 250</b>	<b>125</b>
Pole	Amps	VAC	VDC

## Typical Applications

- Small Appliances
- Industrial Control
- Marine

# Tech Specs

## Dielectric Strength

UL/CSA: 1000V (minimum)

## Insulation Resistance

100 Megohms (minimum)

## Base Material

Steel/Zinc Plate

## Actuator Material

Brass/Nickel Plate

# Ordering Scheme

Sample Part Number **700-1A BL**

Selection 1 2

### 1. SERIES / POLES / CIRCUITRY / RATING / TERMINATION <sup>1</sup>

2A 250VAC; 4A 125VAC; 1A 125V

Solder Lugs	250 Tabs	Positions:	1	2	3	4
-	<b>700-A</b>	OFF	ON	ON	ON	ON
<b>700-1</b>	<b>700-1A</b>	OFF	ON	-	-	-
<b>700-2</b>	<b>700-2A</b>	OFF	ON	ON	ON	ON (repeating for 8 positions)
<b>700-3</b>	<b>700-3A</b>	OFF	ON	ON	OFF	-
<b>700-4</b>	<b>700-4A</b>	OFF	ON	ON	-	-
<b>700-5</b>	<b>700-5A</b>	OFF	ON	OFF	-	-
<b>700-6</b>	<b>700-6A</b>	-	ON	OFF	ON	-
<b>700-7</b>	<b>700-7A</b>	-	ON	ON	-	-
<b>700-8</b>	<b>700-8A</b>	-	ON	ON	ON	ON
<b>700-9</b>	<b>700-9A</b>	OFF	ON	OFF	ON	ON

3A 250VAC; 6A 125VAC

Switch Positions	OFF Position
<b>800-2</b> 2 positions	<b>800-A</b> 1st position
<b>800-3</b> 3 positions	<b>800-A2</b> 2nd position
<b>800-4</b> 4 positions	<b>800-A3</b> 3rd position
<b>800-5</b> 5 positions	<b>800-A4</b> 4th position
<b>800-6</b> 6 positions	<b>800-A5</b> 5th position
<b>800-7</b> 7 positions	<b>800-A6</b> 6th position
<b>800-8</b> 8 positions	<b>800-A7</b> 7th position
	<b>800-A8</b> 8th position

### 2. ACTUATOR COLOR

**BL** Black

Notes:

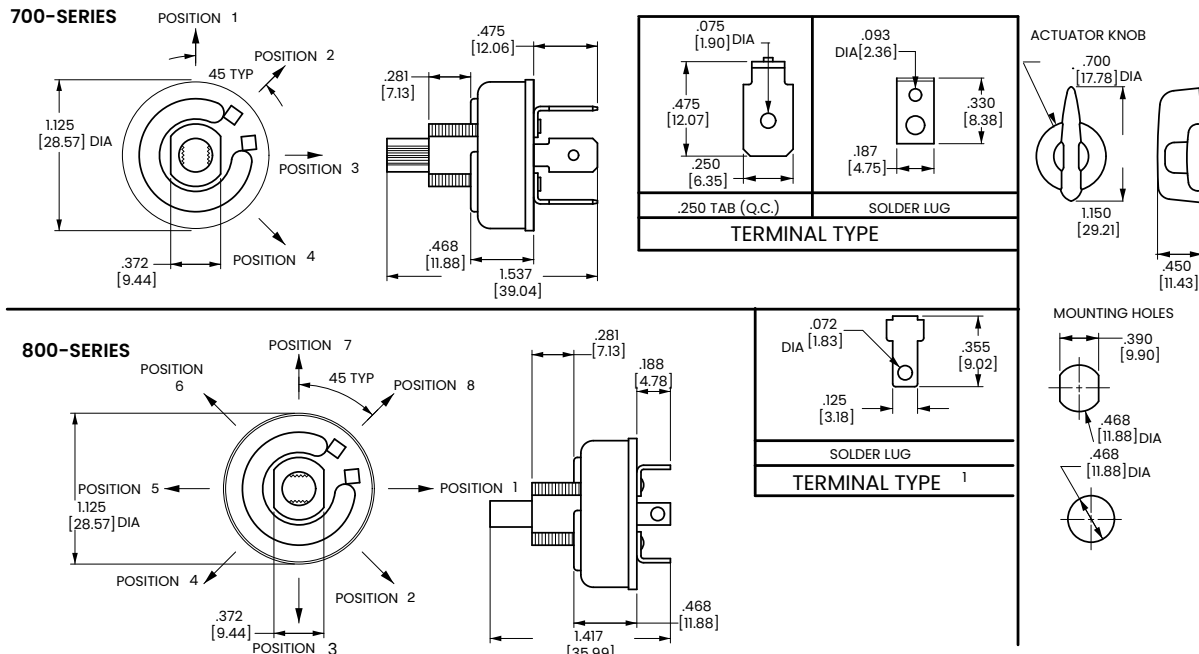
- <sup>1</sup> 700-2 and 700-2A feature 8 detent positions.  
800-Series terminal is a combination solder lug and quick connect.

[Configure Complete Part Number >](#)

[Browse Standard Parts >](#)

# Dimensional Specs

inches [millimeters]



Notes:

1. Terminal is combination solder lug and quick connect.

## Authorized Sales Representatives and Distributors

Click on a region of the map below to find your local representatives and distributors or visit [www.carlingtech.com/findarep](http://www.carlingtech.com/findarep).



## About Carling

Founded in 1920, Carling Technologies is a leading manufacturer of electrical and electronic switches and assemblies, circuit breakers, electronic controls, power distribution units, and multiplexed power distribution systems. With six ISO9001 and IATF16949 registered manufacturing facilities and technical sales offices worldwide, Carling Technologies Sales, Service and Engineering teams do much more than manufacture electrical components, they engineer powerful solutions! To learn more about Carling please visit [www.carlingtech.com/company-profile](http://www.carlingtech.com/company-profile).

To view all of Carling's environmental, quality, health & safety certifications please visit [www.carlingtech.com/environmental-certifications](http://www.carlingtech.com/environmental-certifications).

© Carling Technologies, Inc.

3. Carling is a registered trademark of Carling Technologies, Inc. in the U.S. and other countries.

## X-ON Electronics

Largest Supplier of Electrical and Electronic Components

*Click to view similar products for [Rotary Switches](#) category:*

*Click to view products by [Carling](#) manufacturer:*

Other Similar products are found below :

[57HS22-02-2-06N](#) [57M22-02B16N](#) [57M22-09A16N](#) [M3786/4-0881](#) [M3786/4-3267](#) [M3786/4-5568](#) [M3786/4-6029](#) [71ESF30-05204N](#)  
[MC06L1NCGF](#) [84986-26](#) [9003K2C003GA](#) [PLR3251](#) [PLR3262](#) [PS3](#) [A0142M2SP](#) [A019605](#) [A029303](#) [R2AA4455NNNN](#)  
[R2BB4455NNNN](#) [DR75-AMSF-10R-B](#) [14-520.0360](#) [1703.3201](#) [HW1MS-0202-101](#) [24002-03S](#) [A029101](#) [ACSNO-129-YB-C1014](#) [ACSNO-](#)  
[134-RR-YB-C1005](#) [ACSNO-353-SB-C3016](#) [1825537-4](#) [T505](#) [T505E](#) [24005-03N](#) [H10207RR01Q](#) [M3786/4-0002](#) [M3786/4-0630](#) [M3786/4-](#)  
[1028L](#) [M3786/4-1233L](#) [M3786/4-3044](#) [M3786/4-3129](#) [M3786/4-5008L](#) [M3786/4-5256](#) [MC6CX1A502X009](#) [42HS36-01-1-06N](#) [42P36-](#)  
[03B10S](#) [44MBS60-04-2-03N](#) [44MG90-02-1-02N](#) [50KMT90-01-2-02N](#) [51A22-01-1-16S](#) [51CDP30-01PAJN](#) [51KSP30-01D04N](#)