

# R135-Series

Rotary Switches

[PRODUCT WEBPAGE](#)

*request sample, configure part*



The R135 and R135A-Series rotary switches are single pole, single throw "L" rated up to 3A, feature an ON-OFF repeating action, and are available with a nylon actuating knob; nylon snap-in bracket or nickel-plated brass bushing. These switches are typically used to control lighting functions.

---

<b>1</b>	<b>1.5-5</b>	<b>125, 250</b>	<b>12</b>
Pole	Amps	VAC	VDC

## Typical Applications

- Appliances
- HVAC

# Tech Specs

## Dielectric Strength

UL/CSA: 1000V - live to dead metal parts

## Electrical Life

100,000 cycles

## Operating Temperature

32°F to 185°F (0°C to 85°C)

# Ordering Scheme

Sample Part Number **R135-A** **BL**

Selection 1 2

### 1. SERIES

**1.5A 250 VAC; 3A 125 VAC L; 5A 12 VDC** Wire Leads  
 OFF-ON repeating .375 threaded bushing **R135**  
 OFF-ON repeating nylon snap-in bezel **R135-A**

### 2. KNOB COLOR

**BL** Black  
**WH** White  
 Custom colors available. Consult factory.

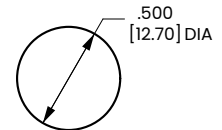
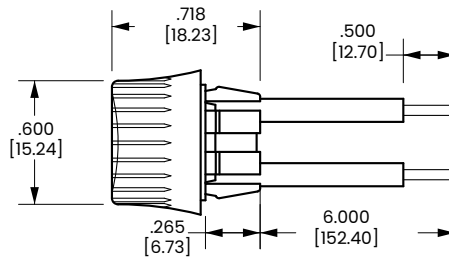
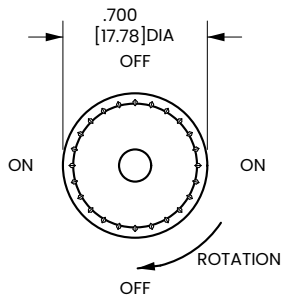
Note:  
 Standard Wire Leads are 6" long, stripped 1/2" black. If different length required, please specify at the end of the part number. ex. R135-A-BL/20". Panel Cut-Out Recommendations: For sheet metal panels, switch must enter panel in same direction as the punch. Burr on bottom. Test cut hole in actual material.

[Configure Complete Part Number >](#)

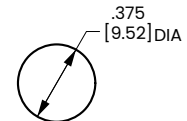
[Browse Standard Parts >](#)

# Dimensional Specs

inches [millimeters]



**NYLON BEZEL MOUNTING HOLE**  
 Snaps into .500 [12.70] Dia. hole  
 Panel Thickness: .020 [508] to .078 [1.98]



**THREADED BUSHING MOUNTING HOLE**  
 Fits into .375 [9.52] Dia. hole  
 Bushing Length: .312 [7.92]

## Authorized Sales Representatives and Distributors

Click on a region of the map below to find your local representatives and distributors or visit [www.carlingtech.com/findarep](http://www.carlingtech.com/findarep).



## About Carling

Founded in 1920, Carling Technologies is a leading manufacturer of electrical and electronic switches and assemblies, circuit breakers, electronic controls, power distribution units, and multiplexed power distribution systems. With six ISO9001 and IATF16949 registered manufacturing facilities and technical sales offices worldwide, Carling Technologies Sales, Service and Engineering teams do much more than manufacture electrical components, they engineer powerful solutions! To learn more about Carling please visit [www.carlingtech.com/company-profile](http://www.carlingtech.com/company-profile).

To view all of Carling's environmental, quality, health & safety certifications please visit [www.carlingtech.com/environmental-certifications](http://www.carlingtech.com/environmental-certifications).

© Carling Technologies, Inc.

3. Carling is a registered trademark of Carling Technologies, Inc. in the U.S. and other countries.

## X-ON Electronics

Largest Supplier of Electrical and Electronic Components

*Click to view similar products for [Rotary Switches](#) category:*

*Click to view products by [Carling](#) manufacturer:*

Other Similar products are found below :

[57HS22-02-2-06N](#) [57M22-02B16N](#) [57M22-09A16N](#) [M3786/4-0881](#) [M3786/4-3267](#) [M3786/4-5568](#) [M3786/4-6029](#) [71ESF30-05204N](#)  
[MC06L1NCGF](#) [84986-26](#) [9003K2C003GA](#) [PLR3251](#) [PLR3262](#) [PS3](#) [A0142M2SP](#) [A019605](#) [A029303](#) [R2AA4455NNNN](#)  
[R2BB4455NNNN](#) [DR75-AMSF-10R-B](#) [14-520.0360](#) [1703.3201](#) [HW1MS-0202-101](#) [24002-03S](#) [A029101](#) [ACSNO-129-YB-C1014](#) [ACSNO-](#)  
[134-RR-YB-C1005](#) [ACSNO-353-SB-C3016](#) [1825537-4](#) [T505](#) [T505E](#) [24005-03N](#) [H10207RR01Q](#) [M3786/4-0002](#) [M3786/4-0630](#) [M3786/4-](#)  
[1028L](#) [M3786/4-1233L](#) [M3786/4-3044](#) [M3786/4-3129](#) [M3786/4-5008L](#) [M3786/4-5256](#) [MC6CX1A502X009](#) [42HS36-01-1-06N](#) [42P36-](#)  
[03B10S](#) [44MBS60-04-2-03N](#) [44MG90-02-1-02N](#) [50KMT90-01-2-02N](#) [51A22-01-1-16S](#) [51CDP30-01PAJN](#) [51KSP30-01D04N](#)