

# RG-Series

Single/Double Pole Lighted Rocker & Paddle Switches

**PRODUCT WEBPAGE**

*request sample, configure part*



The double pole version of the R-Series incorporates the same sleek lines as the original Corvette, in a double pole envelope. Features include silver-plated butt-action contacts which afford ratings to 20A/125, 15A 250VAC and withstand peak inrush currents up to 100 amps. Paddle or rocker actuators and a choice of solder lug, .250 Tab and wire lead terminations enable this switch to adapt to high current applications.

<b>1-2</b>	<b>10-20</b>	<b>125-250</b>	<b>6-24</b>
Poles	Amps	VAC	VDC

## Typical Applications

- Power Supply
- Appliances
- Exercise Equipment
- Music Equipment

# Tech Specs

## Dielectric Strength

UL/CSA: 1000V - live to dead metal parts & opposite polarity  
 VDE: 4000V - live to dead metal parts;  
 1250V - opposite polarity & across open contacts

## Electrical Life

50,000 cycles

## Operating Temperature

-40°F to 185°F (-40°C to 85°C)

# Ordering Scheme

Sample Part Number **RGSCA901 - R - B - B - A**

Selection 1 2 3 4 5

### 1. SERIES

<b>15A 250 VAC, 20A 125 VAC, 3/4 HP 125-250 VAC, 14(6)A 250 VAC</b>			
	Solder Lugs	.250 Tabs	Wire Leads
<b>Standard Base</b>			
OFF-NONE-ON (Single Pole)	<b>RGSCA900</b>	<b>RGSCA901</b>	<b>RGSCA905</b>
ON-NONE-ON (Single Pole)	<b>RGSCB900</b>	<b>RGSCB901</b>	<b>RGSCB905</b>
OFF-NONE-ON (Double Pole)	<b>RGSCC900</b>	<b>RGSCC901</b>	<b>RGSCC905</b>
ON-NONE-ON (Double Pole)	<b>RGSCD900</b>	<b>RGSCD901</b>	<b>RGSCD905</b>
<b>European Base (22 x 30 mm cutout)</b>			
OFF-NONE-ON (Single Pole)	<b>RGSEA900</b>	<b>RGSEA901</b>	<b>RGSEA905</b>
ON-NONE-ON (Single Pole)	<b>RGSEB900</b>	<b>RGSEB901</b>	<b>RGSEB905</b>
OFF-NONE-ON (Double Pole)	<b>RGSEC900</b>	<b>RGSEC901</b>	<b>RGSEC905</b>
ON-NONE-ON (Double Pole)	<b>RGSED900</b>	<b>RGSED901</b>	<b>RGSED905</b>

### 2. ACTUATOR STYLE

<b>P</b> Paddle	<b>R</b> Rocker
-----------------	-----------------

### 3. ACTUATOR COLOR

<b>B</b> Black	<b>W</b> White
----------------	----------------

### 4. BEZEL COLOR

<b>B</b> Black	<b>W</b> White
----------------	----------------

### 5. ROCKER LEGEND

NO LEGEND	hot stamp
OFF-ON vertical	<b>O</b>
OFF-ON horizontal	<b>A</b>
O-I horizontal	<b>B</b>
O-I vertical	<b>D</b>
Dual OFF-ON, O-I vertical	<b>E</b>
Dual OFF-ON, O-I horizontal	<b>H</b>
	<b>J</b>

Notes:

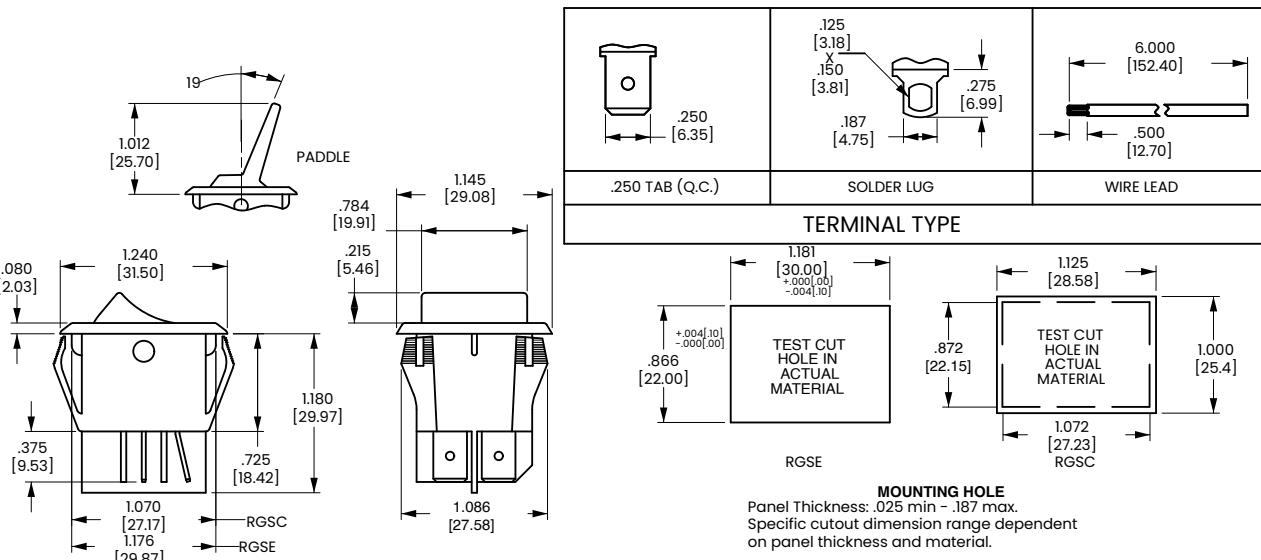
1 Additional ratings, colors and clear style actuators are available. Consult factory.

[Configure Complete Part Number >](#)

[Browse Standard Parts >](#)

# Dimensional Specs

inches [millimeters]



## Authorized Sales Representatives and Distributors

Click on a region of the map below to find your local representatives and distributors or visit [www.carlingtech.com/findarep](http://www.carlingtech.com/findarep).



## About Carling

Founded in 1920, Carling Technologies is a leading manufacturer of electrical and electronic switches and assemblies, circuit breakers, electronic controls, power distribution units, and multiplexed power distribution systems. With six ISO9001 and IATF16949 registered manufacturing facilities and technical sales offices worldwide, Carling Technologies Sales, Service and Engineering teams do much more than manufacture electrical components, they engineer powerful solutions! To learn more about Carling please visit [www.carlingtech.com/company-profile](http://www.carlingtech.com/company-profile).

To view all of Carling's environmental, quality, health & safety certifications please visit [www.carlingtech.com/environmental-certifications](http://www.carlingtech.com/environmental-certifications).

© Carling Technologies, Inc.

3. Carling, Curvette are registered trademarks of Carling Technologies, Inc. in the U.S. and other countries.

## X-ON Electronics

Largest Supplier of Electrical and Electronic Components

*Click to view similar products for [Rocker Switches](#) category:*

*Click to view products by [Carling](#) manufacturer:*

Other Similar products are found below :

[LTILA6E-1S-WH-RC-FN12VXCR1](#) [6-1571986-9](#) [8007K26N324V52](#) [8055K23Z7V](#) [8055K32Z7V](#) [8055K52Z7V](#) [8138K20E6M50](#) [84206L](#)  
[84312LX](#) [PREDD5-07F-BB0GW](#) [999-16716-002](#) [999-16716-003](#) [999-16716-004](#) [A101J1V3Q004](#) [A101J2ZQ004](#) [A101J4ZQ004](#)  
[A101J51CB0004](#) [A103J1ZQ004](#) [A201J1AQ004](#) [A201J3ZB004](#) [A201J50ZQ004](#) [A203J51ZQ0004](#) [A435S1YZQ](#) [H8500XBBBBL-A](#)  
[H8653VBBG2577W](#) [HB130CHNWWNAAC](#) [R13112ABB-602W](#) [1251.0303](#) [AE205J60V3B004](#) [1352.0107](#) [1571099-3](#) [1571987-4](#)  
[1571987-5](#) [1571989-7](#) [1571988-5](#) [B123J77V7B2](#) [B226J50W4Q22P](#) [B433J37ZQ22M](#) [160212E](#) [1634200-7](#) [1801.1164](#) [1839.1502](#) [PANEL-](#)  
[PLUG-VHP-BLACK](#) [PANEL-PLUG-VHP-WT](#) [K1ABBSCADN](#) [KG312A2DXD246X](#) [250011E714](#) [2600HM11E](#) [2600R21E](#) [260413E](#)