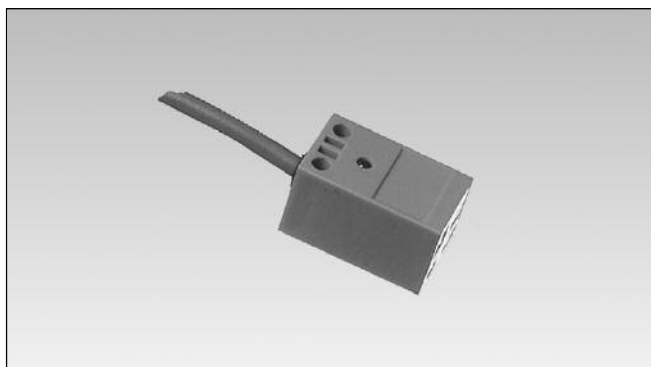


# Proximity Sensors Inductive Rectangular Plastic Housings Types IC, Cable

CARLO GAVAZZI



- Plastic housing
- Sensing distance: 4 mm
- Non-flush mounting
- Output: Transistor, NPN/PNP, normally open
- Power supply: 10 to 30 VDC
- 2 m PVC cable

## Product Description

Inductive proximity sensor in rectangular plastic housing. This series is suitable for the control of axial and rotational movements. Output con-

figured as PNP or NPN, normally open. Connection with 2 m PVC cable.

## Ordering Key

**IC 17 CNC 04 NO-K**

Ind. prox. switch	_____
Housing style	_____
Housing size	_____
Housing material	_____
Housing length	_____
Detection principle	_____
Sensing distance	_____
Output type	_____
Output configuration	_____

## Type Selection

Rated op. dist. (S <sub>n</sub> )	Connection	Housing dimensions [mm]	Ordering no. Transistor, NPN Normally open	Ordering no. Transistor, PNP Normally open
4 mm	Cable	17.5 x 17 x 28.5	IC 17 CNC 04 NO-K	IC 17 CNC 04 PO-K

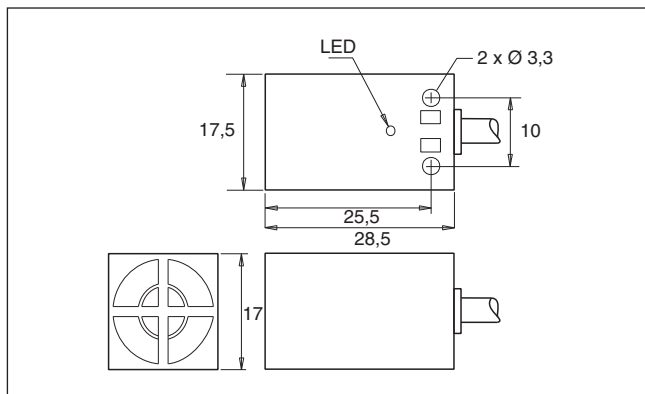
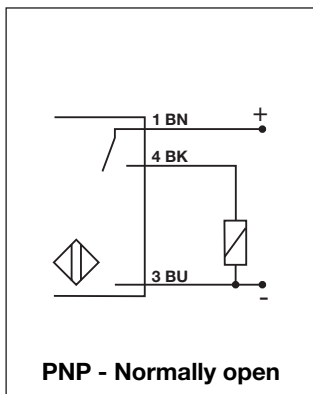
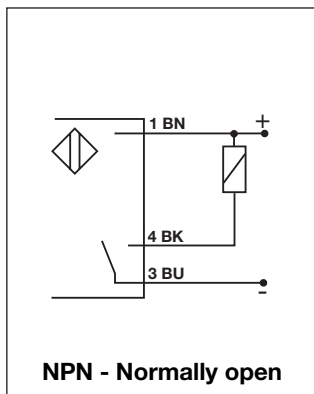
## Specifications

Rated operational volt. (U <sub>B</sub> )	10 to 30 VDC (ripple included)	Sensing distance	4 mm
Ripple	≤ 10%	Effective operating dist. (S <sub>r</sub> )	0.9 x S <sub>n</sub> ≤ S <sub>r</sub> ≤ 1.1 x S <sub>n</sub>
Rated operational current (I <sub>e</sub> ) Continuous	≤ 100 mA @ 25°C	Usable operating dist. (S <sub>u</sub> )	0.85 x S <sub>r</sub> ≤ S <sub>u</sub> ≤ 1.15 x S <sub>r</sub>
No-load supply current (I <sub>o</sub> )	≤ 12 mA (ON)	Ambient temperature	Operating: -25° to +70°C (-13° to +158°F) Storage: -30° to +75°C (-22° to +167°F)
Voltage drop (U <sub>d</sub> )	< 1 V (@ I <sub>max</sub> )	Degree of protection	IP 67 (Nema 1, 3, 4, 6, 13)
Frequency of op. cycles (f)	500 Hz	Housing material	Plastic
Indication for output ON	LED, yellow	CE-marking	Yes
		Connection	Cable, 2 m, PVC, AWG 26



## Wiring Diagrams

## Dimensions



## Installation Hints

*To avoid interference from inductive voltage/current peaks, separate the prox. switch power cables from any other power cables, e.g. motor, contactor or solenoid cables*

*Relief of cable strain*

The cable should not be pulled

*Protection of the sensing face*

A proximity switch should not serve as mechanical stop

*Switch mounted on mobile carrier*

Any repetitive flexing of the cable should be avoided

## X-ON Electronics

Largest Supplier of Electrical and Electronic Components

*Click to view similar products for [Proximity Sensors](#) category:*

*Click to view products by [Carlo Gavazzi](#) manufacturer:*

Other Similar products are found below :

[01.001.5653.1](#) [70.340.1028.0](#) [70.360.2428.0](#) [70.364.4828.0](#) [70.810.1053.0](#) [72.360.1628.0](#) [73.363.6428.0](#) [8027AL20NL2CPXX](#) [FYCC8E1-2](#)  
[9221350022](#) [922AA2W-A9P-L](#) [PLS2](#) [GL-12F-C2.5X10\(LOT3\)](#) [972AB2XM-A3N-L](#) [972AB3XM-A3P-L](#) [PS3251](#) [980659-1](#) [QT-12](#) [E2E2-](#)  
[X5M41-M4](#) [E2E-X14MD1-G](#) [E2E-X2D1-G](#) [E2EX2ME2N](#) [E2EX3D1SM1N](#) [E2E-X4MD1-G](#) [E2E-X5E1-5M-N](#) [E2E-X5Y2-N](#) [E2E-X7D1-](#)  
[M1J-T-0.3M-N](#) [E2FMX1R5D12M](#) [E2K-F10MC1](#) [5M](#) [EH-302](#) [EI3010TBOP](#) [EI5515NPAP](#) [MS605AU](#) [EP175-32000](#) [BSA-08-25-08](#)  
[IFRM04N35B1/L](#) [IFRM04P1513/S35L](#) [IFRM06P1703/S35L](#) [IFRM08P1501/S35L](#) [IFRM12N17G3/L](#) [IFRM12P17G3/L](#) [IFRM12P3502/L](#)  
[IFRM12P37G1/S14L](#) [ILFK12E9189/I02](#) [ILFK12E9193/I02](#) [IMM2582C](#) [OISN-013](#) [25.161.3253.0](#) [25.332.0653.1](#) [25.352.0653.0](#)