

# PBBOX Push button plastic boxes



PBBOX3HBY

- Pre-cut cable inlet PG13.5/M20
- UL approved plastic material
- Black base and yellow or grey cover
- From 1 to 5 holes
- CE

## Product Description

These boxes, made by UL approved ABS plastic material, are ideal for push buttons application like push button station, emergency STOP push button box, start-stop box etc... They are available from 1 to 5 holes that are fitted for 22mm push buttons series. The black base has a pre-pressed cable inlet type Pg (Pg13.5) or Metric (M20). The cover is available either yellow or grey colours.

## Ordering Key

**PBBOX 3H BY \***

Model \_\_\_\_\_  
 Number of Holes \_\_\_\_\_  
 Box Colour \_\_\_\_\_

\* Not all configurations available – see page 3 for complete list

## Approvals



## General Data

Material	ABS PA-765
Weight	1H 80g / 2.82oz 2H 100g / 3.53oz 3H 120g / 4.23oz 4H 160g / 5.64oz 5H 180g / 6.35oz
Hole diameter	Ø22mm / 0.87"
Operating temperature	-40°C...+60°C / -40°F...+140°F
Degree of protection	IP00

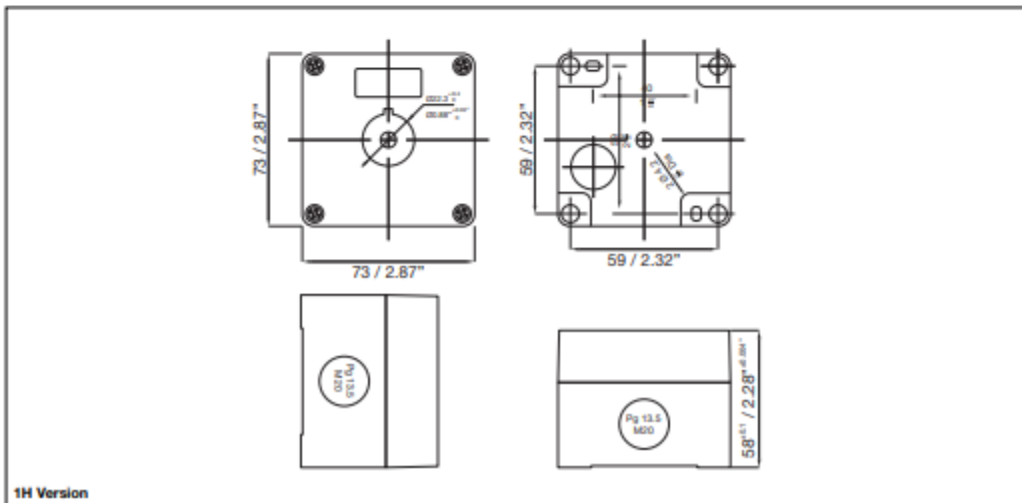
## Number of holes

1H	1 hole
2H	2 holes
3H	3 holes
4H	4 holes
5H	5 holes

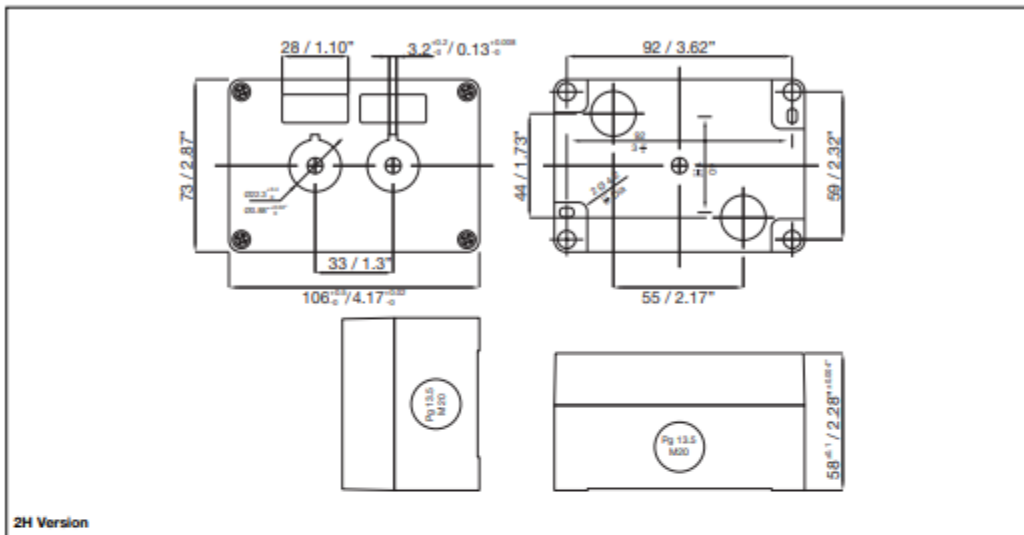
## Box Colours

BY	Base: Black Cover: Pantone Yellow
BG	Base: Black Cover: Grey RAL7035

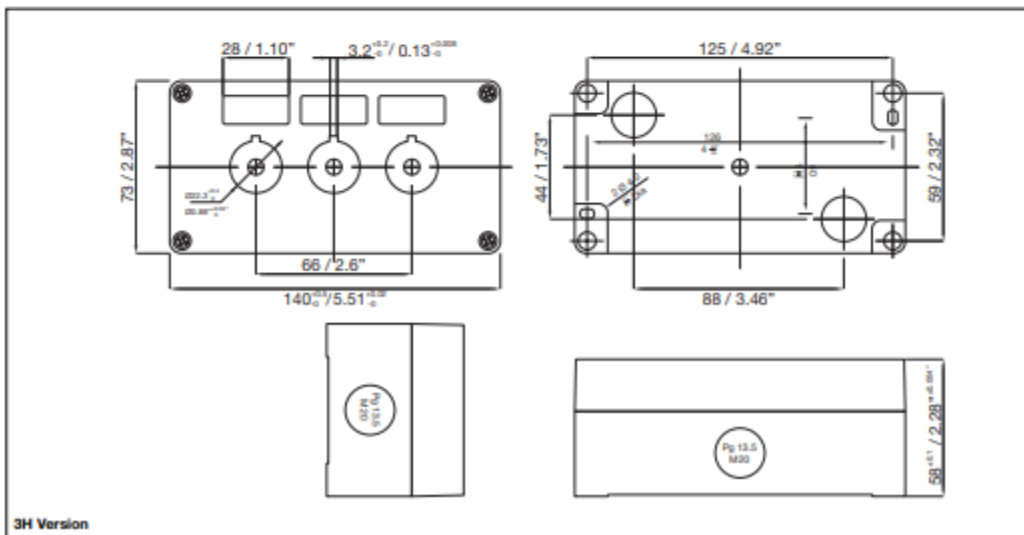
## Dimensions (mm/inches)



**Dimensions** (mm/inches)



2H Version



3H Version

# AVAILABLE PORTFOLIO CONFIGURATIONS

Flush Round Push Buttons		Pilot Lights		I/O Push Buttons	
PB22BF0B	PB22BIF0Y	PL22CHLB110	PL22SFLG24	PB22SIO0RG	PB22SIOL0RG
PB22BF0G	PB22SF0B	PL22CHLB24	PL22SFLR110		
PB22BF0K	PB22SF0G	PL22CHLG110	PL22SFLR24	Key Selector Switches	
PB22BF0R	PB22SF0K	PL22CHLG24	PL22SFLW110	PB22SKRS21KL	PB22SKRS21KR
PB22BF0W	PB22SF0R	PL22CHLR110	PL22SFLW24		
PB22BF0Y	PB22SF0Y	PL22CHLR24	PL22SFLY110	Push Button Boxes	
PB22BIF0B	PB22SIF0G	PL22CHLW110	PL22SFLY24	PBBOX1HBG	PBBOX3HBY
PB22BIF0G	PB22SIF0R	PL22CHLW24	PL22SHLG110	PBBOX1HBY	PBBOX4HBG
PB22BIF0R	PB22SIF1G	PL22CHLY110	PL22SHLG220A	PBBOX2HBG	PBBOX4HBY
PB22BIF0W		PL22CHLY24	PL22SHLG24	PBBOX2HBY	PBBOX5HBG
		PL22CLLB220A	PL22SHLR110		
		PL22CLLB24	PL22SHLR12		
Extended Push Buttons		PL22CLLG110	PL22SHLR220A		
PB22BE0G	PB22BIE0Y	PL22CLLG220A	PL22SHLR24	Lamp Element	
PB22BE0K	PB22SIE0G	PL22CLLG24	PL22SHLW110	PALAMPB110	PALAMPR24
PB22BE0R	PB22SIE0R	PL22CLLR110	PL22SHLW24	PALAMPB24	PALAMPW110
PB22BIE0R		PL22CLLR220A	PL22SHLY110	PALAMPG110	PALAMPW12
		PL22CLLR24	PL22SHLY24	PALAMPG220A	PALAMPW24
		PL22CLLW110	PL22SLLG110	PALAMPG24	PALAMPY110
Red Emergency Stop Push Buttons		PL22CLLW220A	PL22SLLG220A	PALAMPR110	PALAMPY24
PB22BEM41R	PB22SEM41R	PL22CLLW24	PL22SLLG24	PALAMPR220A	
PB22BEM61R	PB22SEM61R	PL22CLLY110	PL22SLLR110		
PB22BKEM41R		PL22CLLY12	PL22SLLR220A	Contact Block	
		PL22CLLY220A	PL22SLLR24	PA2010/1	PA2100/2
		PL22CLLY24	PL22SLLW24	PA2010/2	PA2110/1
Mushroom Push Buttons		PL22CRLB24	PL22SLLY24	PA2020/1	PA2110/2
PB22BIM41R	PB22SM40K	PL22SFLB24	PL22SRLR110	PA2020/2	PA2200/1
PB22BM40G	PB22SM40R	PL22SFLG110		PA2100/1	PA2200/2
PB22BM40R	PB22SM41G				
PB22BM41R	PB22SM41R	Short-Handle Selector Switches			
PB22BM60R	PB22SPPM41R	PB22BSRS21K	PB22SISRS21W		
PB22SIM40R	PB22SPPM61R	PB22BSRS22K	PB22SISRS31G	Accessories	
PB22SIM41R		PB22BSRS31K	PB22SSRS21K	PASEALCOV	PAWP6
		PB22BSRS33K	PB22SSRS31K	PAPBCOV	PAWP9
		PB22SISRS21R	PB22SSRS32K	PAMR22	PAPHC22
				PALBF11	PARR3
				PALBF18	PAPLCONN
Buzzer and Flashing Buzzer		Long-Handle Selector Switches			
PL22SBZK110	PL22SFBZR110	PB22BLRS21K	PB22SLRS31K	Holders	
PL22SBZK12	PL22SFBZR12	PB22BLRS31K	PB22SLRS32K	PBMBM	PBMBP
PL22SBZK220A	PL22SFBZR220A	PB22BLRS21K			
PL22SBZK24	PL22SFBZR24	PB22BLRS31K			
		PB22BLRS21K			
Two Color Pilot Lights		PB22BLRS31K			
PL22STCRG110	PL22STCRG24	PB22SLRS21K			
PL22STCRG220A					

## X-ON Electronics

Largest Supplier of Electrical and Electronic Components

*Click to view similar products for [Switch Cases / Switch Covers](#) category:*

*Click to view products by [Carlo Gavazzi](#) manufacturer:*

Other Similar products are found below :

[704.925.2](#) [AMS-8C](#) [DPS8L2](#) [DPS8P2](#) [DPS8PW2](#) [AP-DV](#) [PBBOX1HBY](#) [PBBOX4HBY](#) [SA1074](#) [HE9Z-D5Y](#) [3107](#) [A3C-3002](#) [L188](#)  
[EUK-704.927.0](#) [704.945.1](#) [EUK-704.927.4](#) [HE9Z-D5N1](#) [L180](#) [M539](#) [HE9Z-D5B](#) [08-0-0-01](#) [905](#) [08-0-0-02](#) [M1080](#) [A165-CTA](#) [M1080-1](#)  
[704.927.6](#) [51-920](#) [61-9922.0](#) [HW9Z-KL1](#) [9001K7](#) [A3PJ-5060](#) [113160](#) [2202](#) [113260](#) [2202](#) [113260](#) [M12](#) [2201](#) [L167](#) [SA1072](#) [M1080-2](#)  
[PBBOX1HBG](#) [PBBOX3HBG](#) [PBBOX4HBG](#) [1.20.810.302/0000](#) [3109](#) [3103](#) [3206](#) [3209](#) [61-9920.0](#) [61-9924.0](#) [61-9927.2](#) [76P02](#) [76P06](#)