

**15000W PEAK POWER AXIAL LEAD
TRANSIENT VOLTAGE SUPPRESSORS**

15KP17A/CA - 15KP280A/CA

R-6

Plastic Leaded Package



R-6

Features

- 1). Glass Passivated Junction
- 2). 15000W Peak Pulse Power Capability on 10/1000µs Waverform
- 3). Excellent Clamping Capability
- 4). Repetition Rate (Duty Cycle) : 0.05%
- 5). Low Incremental Surge Resistance
- 6). Fast Response Time : Typically Less than 1.0ps from 0V to BV
- 7). Colour Band Denotes Cathode end for Uni Directional Device

MAXIMUM RATINGS AND CHARACTERISTICS

@ 25°C Ambient Temperature (unless otherwise specified)

Parameter	Symbol	Value	Unit
Peak Pulse Power Dissipation on 10/1000 µs Waveform (Note 1)	P_{PPM}	Min 15000	W
Peak Pulse Current of on 10/1000µs Waverform (Note 1)	I_{PPM}	Specified	A
Peak Forward Surge Current, 8.3ms single Half Sine Wave Superimposed on Rated Load, (Note 3)	I_{FSM}	400	A
Steady State Power Dissipation at $T_L=75^\circ$, Lead Length 0.375"(9.5mm) (Note 2)	$P_M(AV)$	8	W
Operating Junction Temperature Range	T_J	-55 to 175	°C
Storage Temperature Range	T_{STG}	-55 to 175	°C

Note :

- 1). Non-repetitive Current Pulse, per Fig3 and Derated above $T_A = 25^\circ\text{C}$ per Fig 2.
- 2). Mounted on Copper Pad area of 0.8*0.8" (20*20mm).
- 3). 8.5ms Single Half Sine wave or Equivalent Square Wave, Duty Cycle = 4 pulses per minute maximum.

15KP17_280A_CA Rev0 220313E



15KP17A/CA - 15KP280A/CA

R-6

Plastic Leaded Package

Type Number		Reverse Stand-Off Voltage	Breakdown Voltage Min. @ I _T	Test Current	Maximum Clamping Voltage @ I _{pp}	Peak Pulse Current	Reverse Leakage @ V _{RWM}
(Uni)	(Bi)	V _{RWM} (V)	V _{BR MIN} (V)	I _T (mA)	V _C (V)	I _{pp} (A)	I _R (μA)
15KP17A	15KP17CA	17	18.99	50	29.3	515.4	5000
15KP18A	15KP18CA	18	20.11	50	30.9	488.7	5000
15KP20A	15KP20CA	20	22.34	20	34.3	440.2	1500
15KP22A	15KP22CA	22	24.57	10	37.1	407.0	500
15KP24A	15KP24CA	24	26.81	5	40.7	371.0	150
15KP26A	15KP26CA	26	29.04	5	44.0	343.2	50
15KP28A	15KP28CA	28	31.28	5	47.5	317.9	25
15KP30A	15KP30CA	30	33.51	5	50.7	297.8	15
15KP33A	15KP33CA	33	36.90	5	54.7	276.1	10
15KP36A	15KP36CA	36	40.20	5	59.8	252.5	10
15KP40A	15KP40CA	40	44.70	5	65.8	229.5	10
15KP43A	15KP43CA	43	48.00	5	69.8	216.3	10
15KP45A	15KP45CA	45	50.30	5	72.8	207.4	10
15KP48A	15KP48CA	48	53.60	5	77.7	194.3	10
15KP51A	15KP51CA	51	57.00	5	82.8	182.1	10
15KP54A	15KP54CA	54	60.30	5	87.7	172.2	10
15KP58A	15KP58CA	58	64.80	5	93.8	161.0	10
15KP60A	15KP60CA	60	67.00	5	97.4	155.0	10
15KP64A	15KP64CA	64	71.50	5	104.2	144.9	10
15KP70A	15KP70CA	70	78.20	5	113.6	132.9	10
15KP75A	15KP75CA	75	83.80	5	122.0	123.8	10
15KP78A	15KP78CA	78	87.10	5	126.1	119.7	10
15KP85A	15KP85CA	85	94.90	5	137.6	109.7	10
15KP90A	15KP90CA	90	100.50	5	145.6	103.7	10
15KP100A	15KP100CA	100	111.70	5	161.3	93.6	10
15KP110A	15KP110CA	110	122.90	5	178.6	84.5	10
15KP120A	15KP120CA	120	134.00	5	192.3	78.5	10
15KP130A	15KP130CA	130	145.20	5	208.3	72.5	10
15KP150A	15KP150CA	150	167.60	5	241.9	62.4	10
15KP160A	15KP160CA	160	178.70	5	258.6	58.4	10
15KP170A	15KP170CA	170	189.90	5	272.7	55.4	10
15KP180A	15KP180CA	180	201.10	5	288.5	52.3	10
15KP200A	15KP200CA	200	223.40	5	319.1	47.3	10
15KP220A	15KP220CA	220	245.70	5	428.6	35.2	10
15KP240A	15KP240CA	240	268.10	5	384.6	39.3	10
15KP260A	15KP260CA	260	290.40	5	416.7	36.2	10
15KP280A	15KP280CA	280	312.80	5	454.5	33.2	10

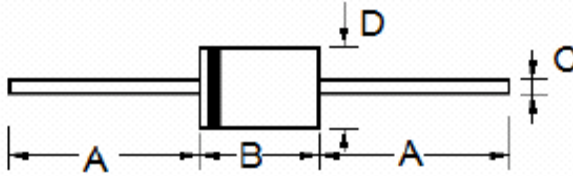
For Bi-directional type having V_{RWM} of 40V and less, I_R Limit is Double.

For parts without A, V_{BR} is ±10%

15KP17A/CA - 15KP280A/CA

R-6 Plastic Leaded Package

R-6 PACKAGE DIMENSION



REF.	DIMENSIONS			
	Millimeters		Inches	
	Min.	Max.	Min.	Max.
A	25.4	---	1.000	---
B	8.6	9.1	0.340	0.360
C	1.2	1.3	0.048	0.052
D	8.6	9.1	0.340	0.360

15KP17A/CA - 15KP280A/CA

R-6

Plastic Leaded Package

CHARACTERISTICS CURVES

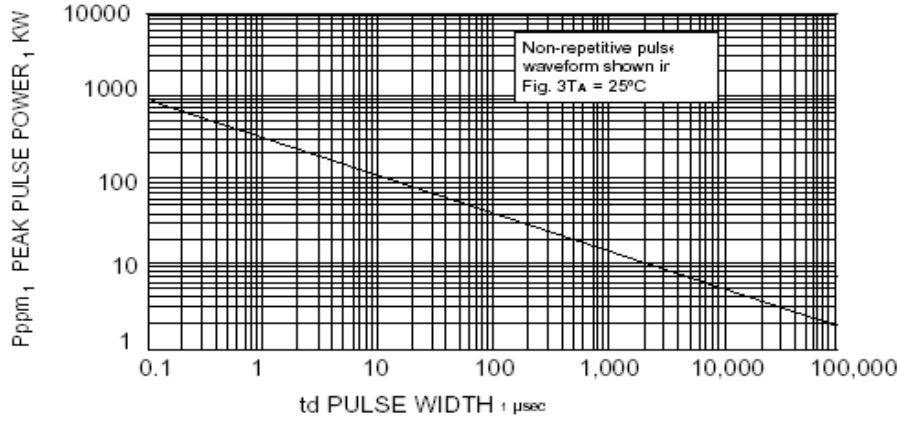


FIG. 1 PEAK PULSE POWER RATING

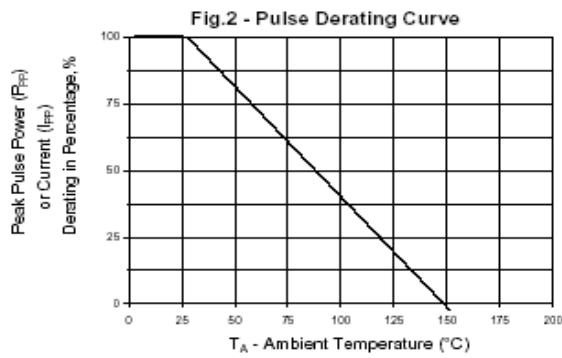
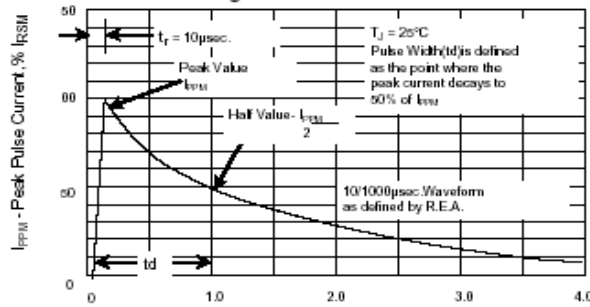


Fig.3 - Pulse Waveform





Continental Device India Limited

An ISO/TS 16949, ISO 9001 and ISO 14001 Certified Company



15KP17A/CA - 15KP280A/CA

R-6 Plastic Leaded Package

Customer Notes

Disclaimer

•The product information and the selection guides facilitate selection of the CDIL's Semiconductor Device(s) best suited for application in your product(s) as per your requirement. It is recommended that you completely review our Data Sheet(s) so as to confirm that the Device(s) meet functionality parameters for your application. The information furnished in the Data Sheet and on the CDIL Web Site/CD are believed to be accurate and reliable. CDIL however, does not assume responsibility for inaccuracies or incomplete information. Furthermore, CDIL does not assume liability whatsoever, arising out of the application or use of any CDIL product; neither does it convey any license under its patent rights nor rights of others. These products are not designed for use in life saving/support appliances or systems. CDIL customers selling these products (either as individual Semiconductor Devices or incorporated in their end products), in any life saving/support appliances or systems or applications do so at their own risk and CDIL will not be responsible for any damages resulting from such sale(s).

CDIL strives for continuous improvement and reserves the right to change the specifications of its products without prior notice.



CDIL is a registered Trademark of
Continental Device India Limited

C-120 Naraina Industrial Area, New Delhi 110 028, India.
Telephone + 91-11-2579 6150, 4141 1112 Fax + 91-11-2579 5290, 4141 1119
email@cdil.com www.cdil.com

15KP17_280A_CA Rev0 220313E

X-ON Electronics

Largest Supplier of Electrical and Electronic Components

Click to view similar products for [ESD Suppressors / TVS Diodes](#) category:

Click to view products by [CDIL](#) manufacturer:

Other Similar products are found below :

[60KS200C](#) [D12V0H1U2WS-7](#) [D18V0L1B2LP-7B](#) [82356050220](#) [D5V0F4U5P5-7](#) [D5V0M5U6V-7](#) [NTE4902](#) [P4KE27CA](#) [P6KE11CA](#)
[P6KE39CA-TP](#) [P6KE8.2A](#) [SA110CA](#) [SA60CA](#) [SA64CA](#) [SMBJ12CATR](#) [SMBJ8.0A](#) [SMLJ30CA-TP](#) [ESD101-B1-02ELS E6327](#) [ESD112-B1-02EL E6327](#) [ESD119B1W01005E6327XTSA1](#) [ESD5V0L1B02VH6327XTSA1](#) [ESD7451N2T5G](#) [19180-510](#) [CPDT-5V0USP-HF](#)
[3.0SMCJ33CA-F](#) [3.0SMCJ36A-F](#) [HSPC16701B02TP](#) [D3V3Q1B2DLP3-7](#) [D55V0M1B2WS-7](#) [DESD5V0U1BL-7B](#) [DRTR5V0U4SL-7](#)
[SCM1293A-04SO](#) [ESD200-B1-CSP0201 E6327](#) [ESD203-B1-02EL E6327](#) [SM12-7](#) [SMF8.0A-TP](#) [SMLJ45CA-TP](#) [CEN955 W/DATA](#)
[82350120560](#) [82356240030](#) [VESD12A1A-HD1-GS08](#) [CPDUR5V0R-HF](#) [CPDUR24V-HF](#) [CPDQC5V0U-HF](#) [CPDQC5V0USP-HF](#)
[CPDQC5V0-HF](#) [D1213A-01LP4-7B](#) [D1213A-02WL-7](#) [ESDLIN1524BJ-HQ](#) [5KP100A](#)