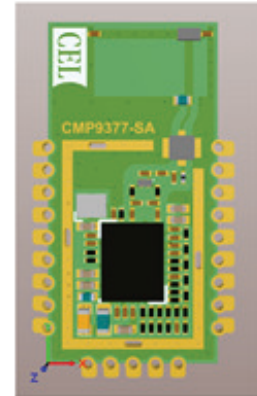


CMP9377: Wi-Fi + BT Module for Connected Platforms

Dual-Band 802.11 ac Plus Bluetooth Smart Ready Solution

Based on Qualcomm's QCA9377, the CMP9377 is a multi-protocol connectivity module delivering the optimal combination of high performance and low power connectivity. The highly integrated module provides dual-band, single stream 802.11 ac plus Bluetooth v5.0. Support for high-speed Wi-Fi connectivity can deliver enriched media experiences for a variety of connected devices while optimized for energy efficiency to extend the usable battery life of portable devices. Offering advanced WLAN/Bluetooth coexistence algorithms, the CMP9377 supports superior rate-over-range throughput and low-latency performance in real-world RF operating conditions.

The integrated CPU manages the Wi-Fi stack to minimize resource requirements on your host platform. The low-level Bluetooth stack runs onboard with a Host Control Interface (HCI) to your host platform running the user-selected Bluetooth stack and profile combination. Support for all Bluetooth profiles and BLE services is integrated.



KEY FEATURES

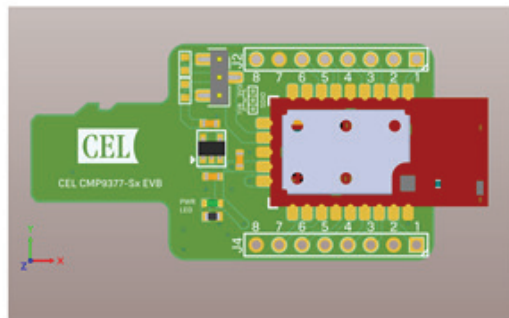
- 802.11 a/b/g/n/ac Wave 2 MU-MIMO
 - Dual-Band Wi-Fi support (2.4 GHz / 5 GHz)
 - Integrated Coexistence Manager
 - Dedicated CPU for WLAN stack
 - 20/40/80 MHz channel support
 - STBC, MU-MIMO, Transmit Beamforming
 - Pout of 20 dBm
- Bluetooth v5.0 Smart Ready
 - Host Control Interface (HCI) for External Bluetooth Stack
 - Supports all standard Bluetooth profiles
 - Pout of 14 dBm (Bluetooth)
 - Pout of 4 dBm (BLE)
- Wireless Coexistence
 - Concurrent Wi-Fi and BLE/15.4
 - Per-Packet Coexistence Manager
- Operating Temp: -40 Deg C to +85 Deg C
- Power Management Features
 - Single 3.3V Regulated Supply
 - Clock Gating to idle blocks
 - Voltage Scaling
 - Processor Frequency Scaling
- Multiple WLAN Interface Options
 - SDIO (CMP9377-S)
 - USB v2.0 (CMP9377-U)
- Bluetooth Interface Options
 - UART (CMP9377-S)
 - USB v2.0 (CMP9377-U)
- Antenna Options
 - Integrated dual-band chip
 - Miniature coax connector for external antenna
- Compact Form Factor
 - 17 x 12 x 3 mm (antenna connector)
 - 24 x 12 x 3 mm (chip antenna)
- Certifications: FCC/IC/CE Pending

HOST DRIVER SUPPORT

- Source Code available for multiple HW/OS reference platforms:
 - Android
 - Linux
 - Windows
- Platform Porting Options
 - Porting Guides available
 - Custom driver development available through Engineering Services contract



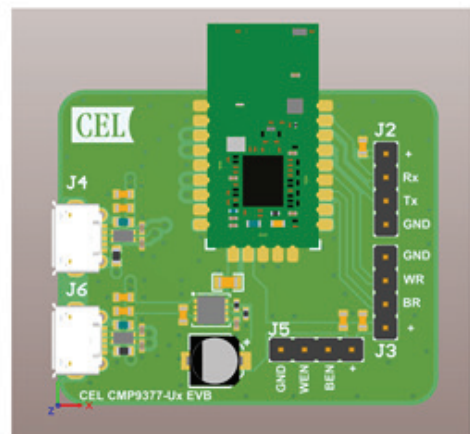
CMP9377: Wi-Fi + BT Module for Connected Platforms



SDIO Module EVALUATION BOARD

PN: CMP9377-S-EVB

1. SDIO Interface via Micro SD Card
2. UART Bluetooth HCI interface
3. Module I/O
4. SDIO Module with dual-band antenna



USB Module EVALUATION BOARD

PN: CMP9377-U-EVB

1. USB WLAN interface
2. USB Bluetooth HCI interface
3. Integrated dual-band antenna
4. WLAN/BT Off Jumpers
5. WLAN/BT On Jumpers
6. USB Module

ORDERING INFORMATION

Part Number	Description
CMP9377-SA	SDIO WLAN Module; Chip Antenna
CMP9377-SC	SDIO WLAN Module; Antenna Connector
CMP9377-UA	USB WLAN Module; Chip Antenna
CMP9377-UC	USB WLAN Module; Antenna Connector
CMP9377-S-EVB	Evaluation Board for CMP9377-Sx
CMP9377-U-EVB	Evaluation Board for CMP9377-Ux

CORPORATE OFFICE

Santa Clara, CA

WIRELESS CENTER OF EXCELLENCE

Buffalo Grove, IL

CONTACT US

wirelessmodules@cel.com

www.cel.com

408-919-2618

ABOUT CEL

California Eastern Laboratories (CEL) is a U.S. based company with a 60+ year history of wireless expertise. CEL assists customers in all phases of wireless product development, from concept to production. At our RF labs we can assist customers with certification pre-scans, RF performance analysis and antenna tuning.

X-ON Electronics

Largest Supplier of Electrical and Electronic Components

Click to view similar products for [WiFi Development Tools - 802.11 category](#):

Click to view products by [CEL manufacturer](#):

Other Similar products are found below :

[YSAEWIFI-1](#) [SKY65981-11EK1](#) [QPF7221PCK-01](#) [SIMSA915C-Cloud-DKL](#) [SIMSA433C-Cloud-DKL](#) [ISM43903-R48-EVB-E](#)
[QPF4206BEVB01](#) [RN-G2SDK](#) [SKY85734-11EK1](#) [SKY85735-11EK1](#) [ENW49D01AZKF](#) [ESP-LAUNCHER](#) [MIKROE-2336](#)
[EVAL_PAN1760EMK](#) [3210](#) [EVAL_PAN1026EMK](#) [ATWINC1500-XPRO](#) [2471](#) [DM990001](#) [WRL-13711](#) [2999](#) [ATWILC3000-SHLD](#)
[DFR0321](#) [TEL0118](#) [3213](#) [DFR0489](#) [SLWSTK-COEXBP](#) [WRL-13804](#) [DEV-13907](#) [UP-3GHAT-A20-0001](#) [3405](#) [TEL0078](#) [2680](#) [2702](#)
[2821](#) [3044](#) [3606](#) [3653](#) [3654](#) [4000](#) [4172](#) [4178](#) [4201](#) [4264](#) [4285](#) [CS-ANAVI-25](#) [CS-ANAVI-26](#) [CS-ANAVI-23](#) [CS-ANAVI-24](#) [CS-ANAVI-28](#)