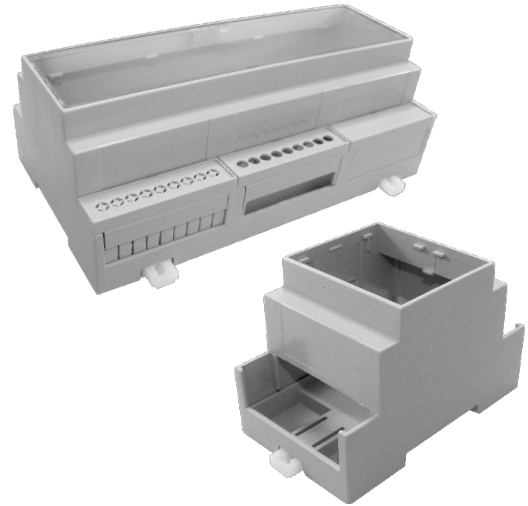


DIN RAIL BOXES

DIN Rail Standard Height Module Boxes

- Snap fit modular design for ease of assembly and custom kitting
- Base fits 35mm DIN rail or directly to flat surface
- Moulded in light grey UL94-V0 flame retardant polycarbonate
- Carries up to 3 PCBs horizontally or 2 vertically
- Snap fit terminal cover options for IP20 finger protection
- Snap in covers available in grey, clear, transparent red and smoked
- Standard enclosure consists of base, top and rail/wall clips
- Open top as standard, solid top, vented and extended wall options available
- Covers and terminal guards ordered separately and can be supplied in kits
- Easily customised covers and terminal guards
- Enclosed base offers isolation from DIN rail
- Front panel ideal for screen printing and recessed solid top for labels and membranes
- Other colours and EMC shielding available to order

CNMB



	BOX LENGTH	HORIZONTAL PCB SIZES			VERTICAL PCB SIZES		PCB FIXING BOSS	
		A	B	C	D	E	X	Y
CNMB/1-	17.5mm	86.5x14mm	57x14mm	41.8x14mm	34x59.6mm	40x14.8mm	6.2mm	18.3mm
CNMB/2-	36mm	86.5x33mm	57x32mm	42x32mm	34x59.6mm	40x33mm	6.2mm	18.3mm
CNMB/3-	53mm	86.5x50mm	57x49mm	42x49mm	34x59.6mm	40x50mm	8.8mm	18.3mm
CNMB/4-	71mm	86.5x68mm	57x67mm	42x67mm	34x59.6mm	40x68mm	8.8mm	18.3mm
CNMB/5-	88mm	86.5x84mm	57x83mm	42x83mm	34x59.6mm	40x84mm	8.8mm	18.3mm
CNMB/6-	106mm	86.5x103mm	57x102mm	42x102mm	34x59.6mm	40x103mm	8.9mm	18.3mm
CNMB/9-	159mm	86.5x156mm	57x155.5mm	42x155mm	34x59.6mm	40x155mm	8.9mm	18.3mm
CNMB/12-	212mm	86.5x208mm	57x207mm	42x207mm	34x59.6mm	40x208mm	8.9mm	18.3mm

For double row terminals covers both sides, add /2 to type No. (e.g. CNMB/3/2)

For single row terminals cover one side only, add /1 to type No. (e.g. CNMB/3/1)

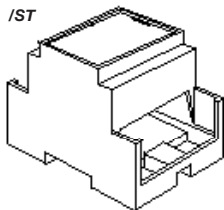
Box supplied with open top as standard

For solid recessed top used for membrane keypads or clear covers to enclose labels, add /ST to type No. (e.g. CNMB/3ST/2)

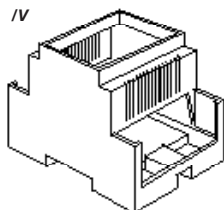
For cooling vents both sides add /V to type No. (e.g. CNMB/3/V/2)

For extended side walls which meet the lower PCB behind terminals, add /W to type No. (e.g. CNMB/3W/2)

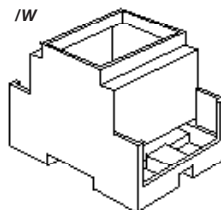
Solid Top /ST



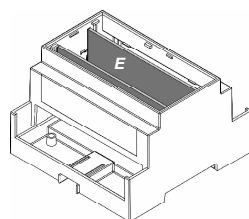
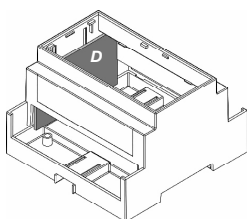
Vented Sides /V



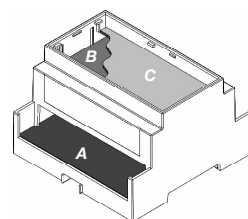
Extended Walls /W



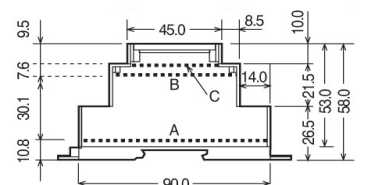
Vertical PCB Positions



Horizontal PCB Positions

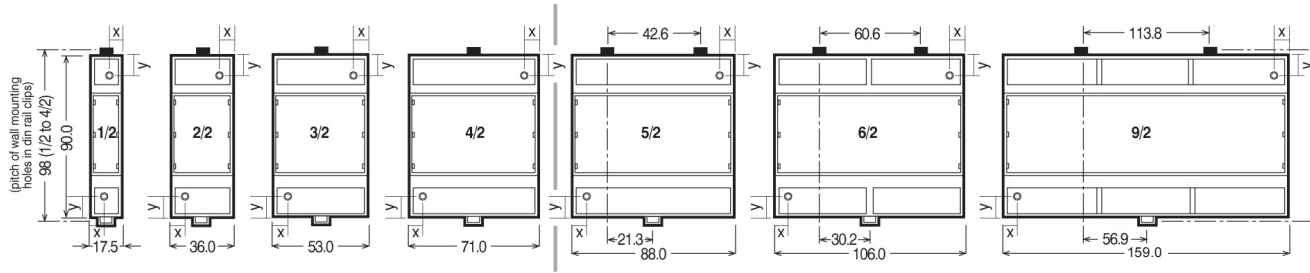


Horizontal PCB Sizes

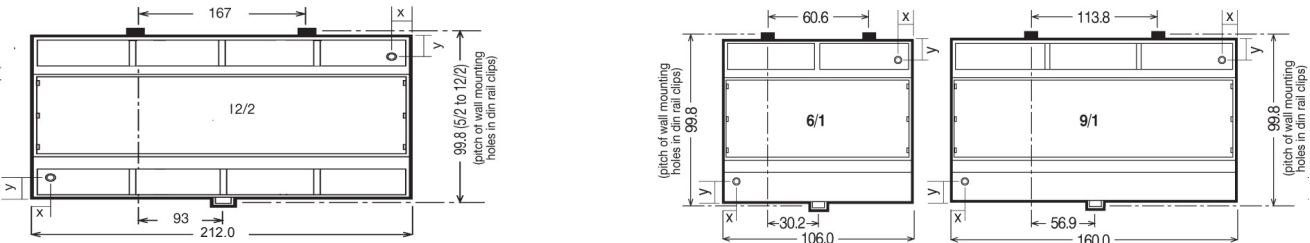


DIN RAIL BOXES

Double Row Terminals/ covers both sides



Single Row Terminals/ covers on one side



Terminal Guards

Solid

TYPE NO.	STYLE	A	D	E
CNMB/1/TGS	Solid	17.5mm	15.0mm	14.3mm
CNMB/2/TGS	Solid	35.5mm	29.9mm	13.8mm
CNMB/3/TGS	Solid	52.8mm	45.5mm	13.8mm
CNMB/4/TGS	Solid	70.6mm	59.9mm	13.8mm
CNMB/5/TGS	Solid	87.6mm	79.5mm	13.8mm

*For 6, 9 & 12 Size Module Use CNMB/3TGS

5.08mm pitch perforated

TYPE NO.	STYLE	A	D	E
CNMB/1/TG508P	Solid	17.5mm	15.0mm	14.3mm
CNMB/2/TG508P	Solid	35.5mm	29.9mm	13.8mm
CNMB/3/TG508P	Solid	52.8mm	45.5mm	13.8mm
CNMB/4/TG508P	Solid	70.6mm	59.9mm	13.8mm
CNMB/5/TG508P	Solid	87.6mm	79.5mm	13.8mm

*For 6, 9 & 12 Size Module Use CNMB/3TG508P

5.08mm pitch pre-drilled

TYPE NO.	STYLE	POLES	A	B	C	D	E
CNMB/1/TG508	Pre-Drilled	3	17.5mm	2.3mm	2.3mm	15.0mm	14.3mm
CNMB/2/TG508	Pre-Drilled	6	35.5mm	0.9mm	2.7mm	29.9mm	13.8mm
CNMB/3/TG508	Pre-Drilled	9	52.8mm	2.3mm	2.3mm	45.5mm	13.8mm
CNMB/4/TG508	Pre-Drilled	12	70.6mm	2.7mm	5.8mm	59.9mm	13.8mm
CNMB/5/TG508	Pre-Drilled	15	87.6mm	2.7mm	5.8mm	79.5mm	13.8mm

For 6, 9 & 12 Size Module Use CNMB/3/TG508

7.5mm pitch pre-drilled

TYPE NO.	STYLE	POLES	A	B	C	D	E
CNMB/1/TG750	Pre-Drilled	2	17.5mm	2.3mm	2.3mm	15.0mm	14.3mm
CNMB/2/TG750	Pre-Drilled	4	35.5mm	0.9mm	2.7mm	29.9mm	13.8mm
CNMB/3/TG750	Pre-Drilled	6	52.8mm	2.3mm	2.3mm	45.5mm	13.8mm
CNMB/4/TG750	Pre-Drilled	8	70.6mm	2.7mm	5.8mm	59.9mm	13.8mm
CNMB/5/TG750	Pre-Drilled	10	87.6mm	2.7mm	5.8mm	79.5mm	13.8mm

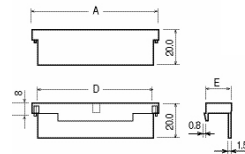
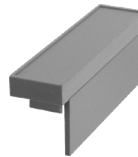
For 6, 9 & 12 Size Module Use CNMB/3/TG750

10.16mm pitch pre-drilled

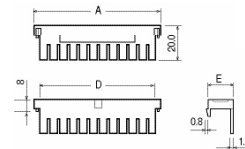
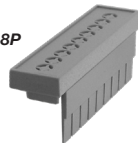
TYPE NO.	STYLE	POLES	A	B	C	D	E
CNMB/1/TG100	Pre-Drilled	2	17.5mm	1.0mm	1.0mm	15.0mm	14.3mm
CNMB/2/TG100	Pre-Drilled	3	35.5mm	0.9mm	0.9mm	29.9mm	13.8mm
CNMB/3/TG100	Pre-Drilled	5	52.8mm	1.0mm	1.0mm	45.5mm	13.8mm
CNMB/4/TG100	Pre-Drilled	6	70.6mm	2.7mm	2.7mm	59.9mm	13.8mm
CNMB/5/TG100	Pre-Drilled	7	87.6mm	2.7mm	5.8mm	79.5mm	13.8mm

For 6, 9 & 12 Size Module use CNMB/3/TG100

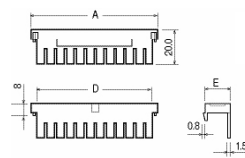
CNMB/ /TGS



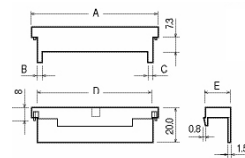
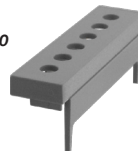
CNMB/ /TG508P



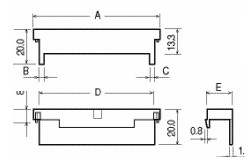
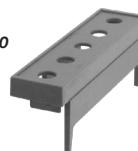
CNMB/ /TG508



CNMB/ /TG750



CNMB/ /TG100



UNIVERSAL ENCLOSURES

HAND HELD CASES

HEAVY DUTY ENCLOSURES

DIN RAIL BOXES

INTERFACE SUPPORTS

CONTROL STATIONS

DIECAST & METAL BOXES

DESKTOP & INSTRUMENT CASES

POTTING BOXES

19" ENCLOSURES

19" SUBRACKS

CUSTOM SIZED ENCLOSURES

CUSTOM SERVICES



+44 (0)1638 716101
info@camdenboss.com
www.camdenboss.com

We operate a constant improvement policy, our products are subject to change without notice.

Ver 1.0

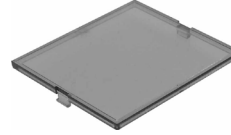
CAMDENBOSS
ELECTRONICS & ENCLOSURES

DIN RAIL BOXES

Standard Covers

RED TRANSPARENT	SMOKED TRANSPARENT	CLEAR TRANSPARENT	GREY	SIZE
CNMB/1/PR	CNMB/1/PS	CNMB/1/PC	CNMB/1/PG	1
CNMB/2/PR	CNMB/2/PS	CNMB/2/PC	CNMB/2/PG	2
CNMB/3/PR	CNMB/3/PS	CNMB/3/PC	CNMB/3/PG	3
CNMB/4/PR	CNMB/4/PS	CNMB/4/PC	CNMB/4/PG	4
CNMB/5/PR	CNMB/5/PS	CNMB/5/PC	CNMB/5/PG	5
CNMB/6/PR	CNMB/6/PS	CNMB/6/PC	CNMB/6/PG	6
CNMB/9/PR	CNMB/9/PS	CNMB/9/PC	CNMB/9/PG	9
CNMB/12/PR	CNMB/12/PS	CNMB/12/PC	CNMB/12/PG	12

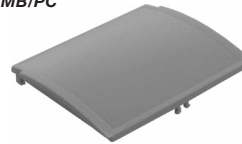
CNMB/P



Curved Covers

RED TRANSPARENT	SMOKED TRANSPARENT	CLEAR TRANSPARENT	GREY	SIZE
CNMB/1/PRC	CNMB/1/PSC	CNMB/1/PCC	CNMB/1/PGC	1
CNMB/2/PRC	CNMB/2/PSC	CNMB/2/PCC	CNMB/2/PGC	2
CNMB/3/PRC	CNMB/3/PSC	CNMB/3/PCC	CNMB/3/PGC	3
CNMB/4/PRC	CNMB/4/PSC	CNMB/4/PCC	CNMB/4/PGC	4
CNMB/5/PRC	CNMB/5/PSC	CNMB/5/PCC	CNMB/5/PGC	5
CNMB/6/PRC	CNMB/6/PSC	CNMB/6/PCC	CNMB/6/PGC	6
CNMB/9/PRC	CNMB/9/PSC	CNMB/9/PCC	CNMB/9/PGC	9

CNMB/PC



Extended Height Module

- 16mm high
- Accepts hinged, curved lid
- Adds an additional horizontal PCB slot

TYPE NO.	WIDTH
CNMB/2/E	34.7mm
CNMB/3/E	52.0mm
CNMB/4/E	70.0mm
CNMB/5/E	86.5mm
CNMB/6/E	104.5mm
CNMB/9/E	157.7mm

CNMB/E



Curved Hinged Covers

- for use with extended module only

RED TRANSPARENT	CLEAR TRANSPARENT	GREY	SIZE
CNMB/2/HPRC	CNMB/2/HPCC	CNMB/2/HPGC	2
CNMB/3/HPRC	CNMB/3/HPCC	CNMB/3/HPGC	3
CNMB/4/HPRC	CNMB/4/HPCC	CNMB/4/HPGC	4
CNMB/5/HPRC	CNMB/5/HPCC	CNMB/5/HPGC	5
CNMB/6/HPRC	CNMB/6/HPCC	CNMB/6/HPGC	6
CNMB/9/HPRC	CNMB/9/HPCC	CNMB/9/HPGC	9

CNMB/HPC



Kits of the most frequently used components are available to order.

Each kit contains one grey panel cover and selection of solid and perforated terminal guards.

KIT	COMPONENT KIT PART NO.	COVER /PG	TERMINAL /TG508P	GUARD /TGS	EXTENSION
					MODULE /E
STANDARD	CNMB/1/KIT	1	2	1	-
	CNMB/2/KIT	1	2	1	-
	CNMB/3/KIT	1	2	1	-
	CNMB/4/KIT	1	2	1	-
	CNMB/5/KIT	1	2	1	-
	CNMB/6/KIT	1	4*	2*	-
	CNMB/9/KIT	1	6*	3*	-
	CNMB/12/KIT	1	8*	4*	-
EXTENDED HEIGHT			/HPCC		
	CNMB/1E/KIT	1	2	1	1
	CNMB/2E/KIT	1	2	1	1
	CNMB/3E/KIT	1	2	1	1
	CNMB/4E/KIT	1	2	1	1
	CNMB/5E/KIT	1	2	1	1
	CNMB/6E/KIT	1	4*	2*	1
	CNMB/9E/KIT	1	6*	3*	1
CNMB/12E/KIT	1	8*	4*	1	

* For size 6, 9 and 12, multiple 'size 3' terminal guards are supplied. For example size 6 requires 2 x 'size 3' guards per side.

Kits are also available for vented, solid top and extended wall bodies e.g. CNMB/2ST/KIT

Where a box has only one open side (e.g. CNMB/5/1) no solid terminal guards are supplied.