


PCB TERMINAL BLOCKS

5.08mm Pitch Standard Profile Rising Clamp Terminal

- 2 & 3 pole double interlocking mechanism for increased strength
- 4-12 pole solid block end stackable
- Moulded in green UL94-V0 flame retardant PA
- Professional rising clamp terminals
- 0.2-4.0mm² (30-12AWG) solid cable
- 0.2-2.5mm² (30-12AWG) stranded cable
- Guided pin alignment
- Captive screws
-  approved

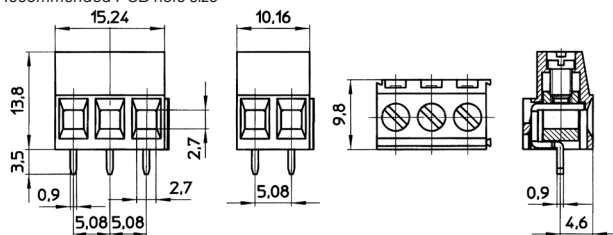
CTB0108




TYPE NO.	POLES	LENGTH
CTB0108/2	2	10.2mm
CTB0108/3	3	15.2mm
CTB0108/4	4	20.3mm
CTB0108/5	5	25.4mm
CTB0108/6	6	30.5mm
CTB0108/7	7	35.6mm
CTB0108/8	8	40.6mm
CTB0108/9	9	45.7mm
CTB0108/10	10	50.8mm
CTB0108/11	11	55.9mm
CTB0108/12	12	60mm

SPECIFICATION

Rating	24A/250V UL=14A/300V, VDE&IMQ=24A/250V
Dielectric strength	≥2kV
Impulse withstand voltage	4kV
Working temperature	110°C
Moulding	UL94-V0 flame retardant PA
Pin/terminal	Tinned, nickel plated brass
Wire clamp	Nickel plated brass
Screw/torque	M3 steel zinc plated, 0.5Nm
Recommended PCB hole size	ø1.3mm



5.08mm Pitch Standard Profile 90° Rising Clamp Terminal

- 2 & 3 pole double interlocking mechanism for increased strength
- 4-12 pole solid block end stackable
- Moulded in green UL94-V0 flame retardant PA
- Professional rising clamp terminals
- 0.2-4.0mm² (30-12AWG) solid cable
- 0.2-2.5mm² (30-12AWG) stranded cable
- Guided pin alignment
- Captive screw
-  approved

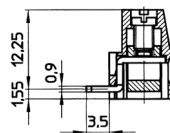
CTB0158



TYPE NO.	POLES	LENGTH
CTB0158/2	2	10.2mm
CTB0158/3	3	15.2mm
CTB0158/4	4	20.3mm
CTB0158/5	5	25.4mm
CTB0158/6	6	30.5mm
CTB0158/7	7	35.60mm
CTB0158/8	8	40.6mm
CTB0158/9	9	45.7mm
CTB0158/10	10	50.8mm
CTB0158/11	11	55.9mm
CTB0158/12	12	61mm

SPECIFICATION

Rating	24A/250V UL=14A/300V, VDE&IMQ=24A/250V
Dielectric strength	≥2kV
Impulse withstand voltage	4kV
Working temperature	110°C
Moulding	UL94-V0 flame retardant PA
Pin/terminal	Tinned, nickel plated brass
Wire clamp	Nickel plated brass
Screw/torque	M3 steel zinc plated, 0.5Nm
Recommended PCB hole size	ø1.3mm



For other dimensions see CTB0108