

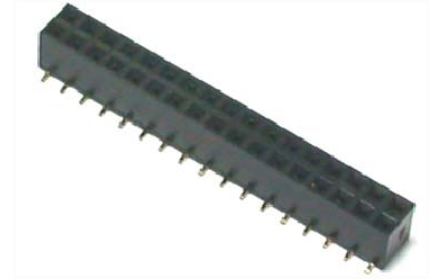
2.0mm Female Header SMT Type H=4.3mm

■ MATERIAL

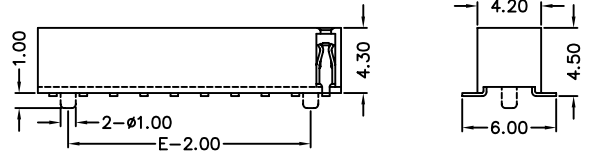
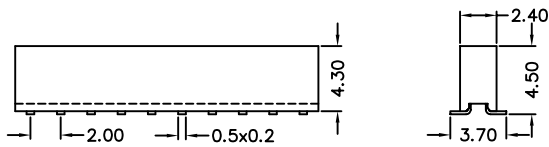
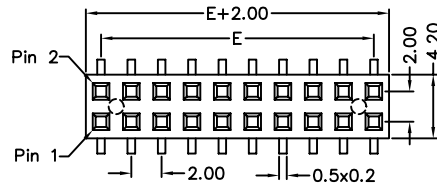
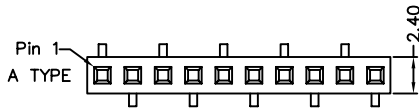
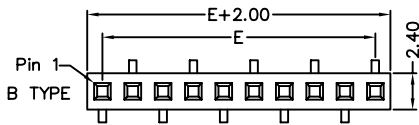
Insulator : High Temperature Polyester
Contact Pin : Phosphor Bronze

■ SPECIFICATION

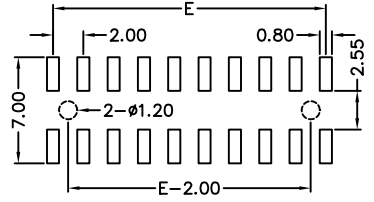
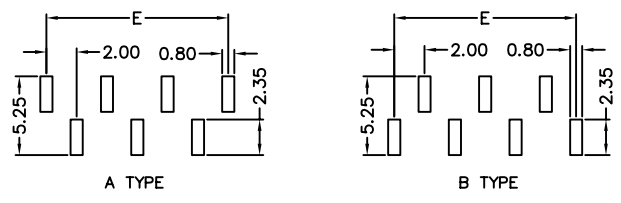
Current Rate : 1 AMP
Insulation Resistance : 5000MΩMin. at DC 500V
Contact Resistance : 20mΩMax. at DC 100mA
Operation Temperature : -40°C to + 105°C



■ Detail Dimensions



■ Recommended P.C.B Layout



■ Order Information

621-x x - xx G B xx
1 2 3 4 5

- 1. 7: Green Product
- 9: Green Product High Temp
- 2. 1: Single row
- 2: Dual rows
- 3. No. of contacts per row
- 4. G: Gold Flash
- S: Selective Gold Plating
- T: Tin Plating

5. Pinrex internal code

Standard Parts	Type
621-x1-xxGB11	B Type
621-x1-xxGB12	A Type
621-x2-xxGB00	w/o posts
621-x2-xxGB12	with posts

■ Number Of Contacts

Unit: mm

Poles	DIM E	Poles	DIM E	Poles	DIM E	Poles	DIM E	Poles	DIM E	Poles	DIM E
		8	14.00	15	28.00	22	42.00	29	56.00	36	70.00
		9	16.00	16	30.00	23	44.00	30	58.00	37	72.00
3	4.00	10	18.00	17	32.00	24	46.00	31	60.00	38	74.00
4	6.00	11	20.00	18	34.00	25	48.00	32	62.00	39	76.00
5	8.00	12	22.00	19	36.00	26	50.00	33	64.00	40	78.00
6	10.00	13	24.00	20	38.00	27	52.00	34	66.00		
7	12.00	14	26.00	21	40.00	28	54.00	35	68.00		