

2.54mm Wire to Wire/Board Crimping Connector

■ MATERIAL

Insulator : Polyester
Contact Pin : Copper Alloy

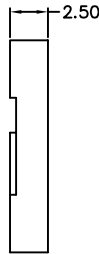
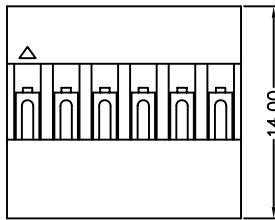
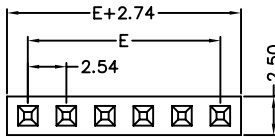


■ SPECIFICATION

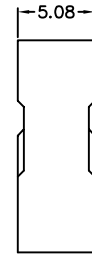
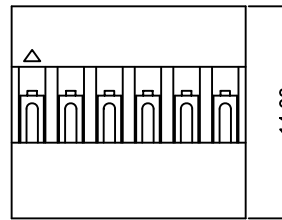
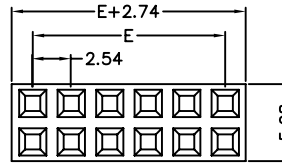
Current Rate : 2 AMP
Insulation Resistance : 1000MΩ MIN.
Contact Resistance : 20mΩMax.
Operation Temperature : -25°C to +85°C

■ Detail Dimensions

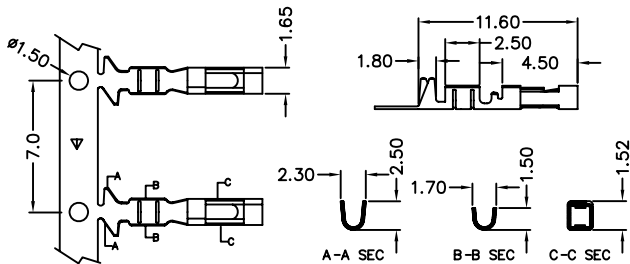
741-75-1xxB01



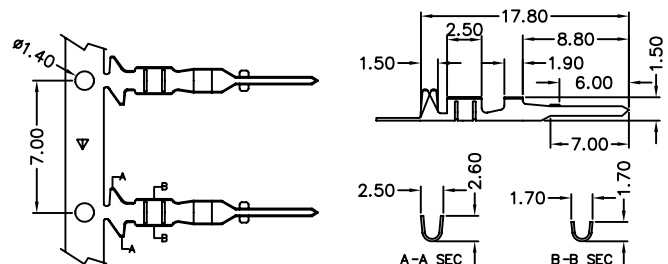
741-75-2xxB01



741-70-Fx0001 (Female Terminal)



741-70-Mx0001 (Male Terminal)



■ Order Information

741-75 - x xx B 01
1 2 3 4

741-70 - x T 0001
5 6 7

- 1. 1: Single row
2: Dual rows
- 2. No. of contacts per row
- 3. B: Black Insulator
- 4. Pinrex internal code

- 5. M: Male Terminal
F: Female Terminal
- 6. T: Tin Plating
G: Gold Flash
S: Selective Gold Plating
- 7. Pinrex internal code

Standard Parts	Type
741-75-1xxB01	Single row
741-75-2xxB01	Dual rows
741-70-MT0001	Male Terminal
741-70-FT0001	Female Terminal

■ Number Of Contacts

Unit: mm

Poles	DIM E	Poles	DIM E	Poles	DIM E	Poles	DIM E	Poles	DIM E	Poles	DIM E
		8	17.78	15	35.56	22	53.34	29	71.12	36	88.90
2	2.54	9	20.32	16	38.10	23	55.88	30	73.66	37	91.44
3	5.08	10	22.86	17	40.64	24	58.42	31	76.20	38	93.98
4	7.62	11	25.40	18	43.18	25	60.96	32	78.74	39	96.52
5	10.16	12	27.94	19	45.72	26	63.50	33	81.28	40	99.06
6	12.70	13	30.48	20	48.26	27	66.04	34	83.82		
7	15.24	14	33.02	21	50.80	28	68.58	35	86.36		