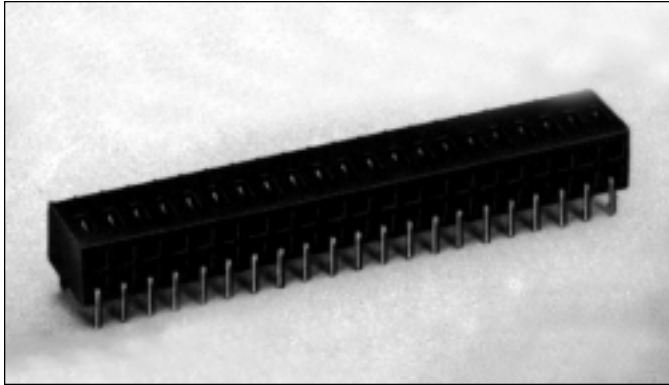


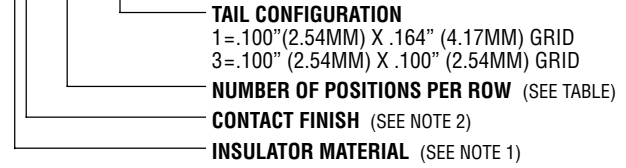
.100" (2.54mm) Dual Row Through Hole Vertical Mount Connectors



9000 SERIES "POST/BOXE"

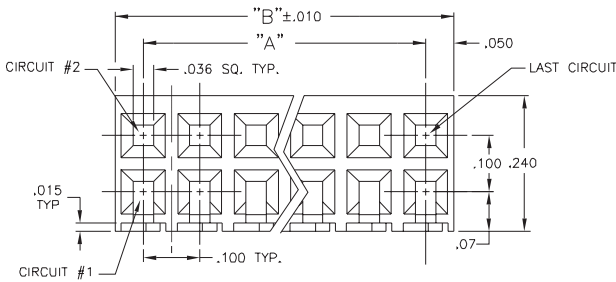
PART NUMBER LEGEND

90XX-2XX-30X



MATING HEADERS: 9100 SERIES

ADDITIONAL SPECIFICATIONS



NOTES:

1) INSULATOR MATERIAL:

900X-2XX-301 : GLASS FILLED POLYESTER (PBT-002), UL 94V-0; COLOR: BLACK
 901X-2XX-301 : GLASS FILLED POLYESTER (PCT-002), UL 94V-0; COLOR: BLACK

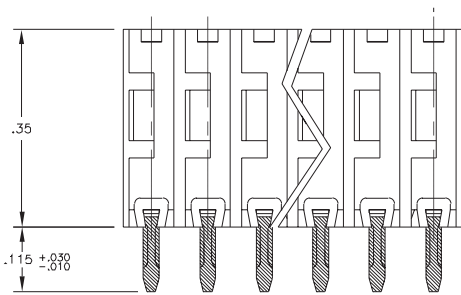
CONTACT MATERIAL: PHOSPHOR BRONZE

2) CONTACT FINISH:

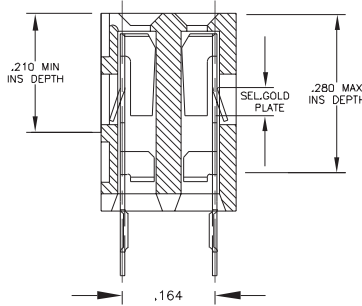
900Q-2XX-303 : .000150/.000250 90/10 TIN/LEAD OVER .000050/.000150 NICKEL PLATE. (-405)

900B-2XX-303 : .000050/.000150 NICKEL PLATE ALL OVER .000030 SEL. GOLD IN MATING AREA, .000075/.000150 SEL. BRITE TIN/LEAD ON SOLDER TAILS. (-823)

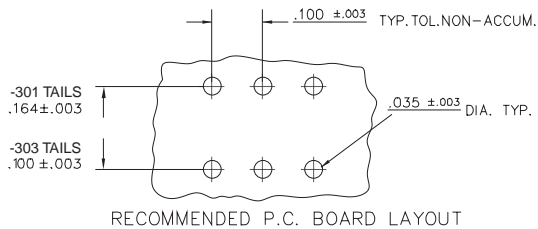
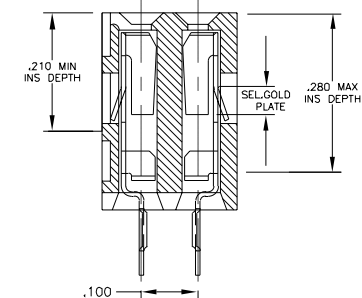
900E-2XX-303 : .000050/.000150 NICKEL PLATE ALL OVER .000015 SEL. GOLD IN MATING AREA, .000075/.000150 SEL. BRITE TIN/LEAD ON SOLDER TAILS. (-824)



-301 TAIL CONFIGURATION



-303 TAIL CONFIGURATION



PART NUMBER	NO. OF CIRCUITS	DIM "A"	DIM "B"
900X-202-301	4	.100	.200
↑-203	6	.200	.300
↑-204	8	.300	.400
↑-205	10	.400	.500
↑-206	12	.500	.600
↑-207	14	.600	.700
↑-208	16	.700	.800
↑-209	18	.800	.900
↑-210	20	.900	1.000
↑-211	22	1.000	1.100
↑-212	24	1.100	1.200
↑-213	26	1.200	1.300
↑-214	28	1.300	1.400
↑-215	30	1.400	1.500
↑-216	32	1.500	1.600
↑-217	34	1.600	1.700
↑-218	36	1.700	1.800
↑-219	38	1.800	1.900
↑-220	40	1.900	2.000
↑-221	42	2.000	2.100
↑-222	44	2.100	2.200
↑-223	46	2.200	2.300
↑-224	48	2.300	2.400
↑-225	50	2.400	2.500
↑-226	52	2.500	2.600
↑-227	54	2.600	2.700
↑-228	56	2.700	2.800
↑-229	58	2.800	2.900
↑-230	60	2.900	3.000
↑-231	62	3.000	3.100
↑-232	64	3.100	3.200
↑-233-	66	3.200	3.300
↑-234-	68	3.300	3.400
↑-235	70	3.400	3.500
↑-236	72	3.500	3.600
↑-237	74	3.600	3.700
↑-238	76	3.700	3.800
↑-239	78	3.800	3.900
↑-240	80	3.900	4.000