

D-Sub Connector Solder Type

■ **MATERIAL**

Insulator : Polyester
Contact Pin : Copper Alloy

■ **SPECIFICATION**

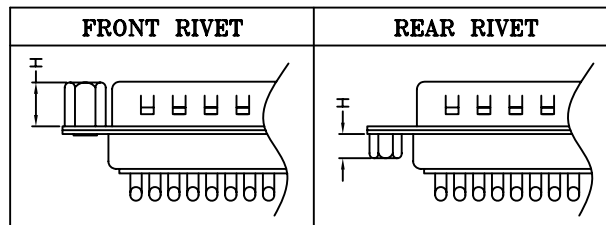
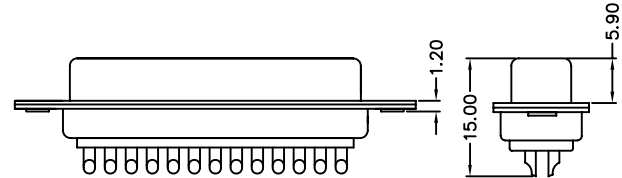
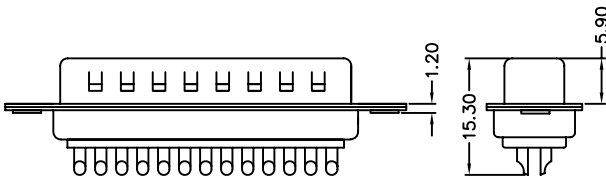
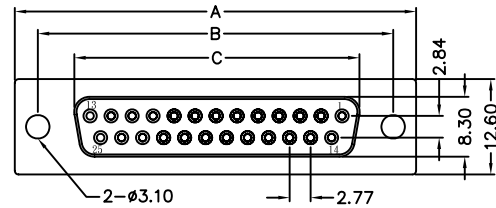
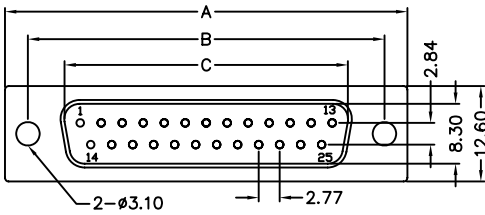
Current Rate : 1 AMP
Insulation Resistance : 1000MΩMin. at DC 500V
Contact Resistance : 30mΩMax. at DC 100mA
Operation Temperature : -55°C to +105°C



■ **Detail Dimensions**

982-31-Axx003

982-31-Bxx003



■ **Order Information**

982-31- x xx x x 3
1 2 3 4

Standard Parts
982-31-Axx003
982-31-Bxx003

- | | |
|---|---|
| <p>1. A: Male
B: Female</p> <p>2. No. of contacts</p> <p>3. 0: Black Insulator
2: White Insulator
8: Blue Insulator</p> | <p>4. 0: None Accessories</p> <p>1: Front rivet #4-40 H=4.0mm</p> <p>3: Rear rivet #4-40 H=4.0mm</p> <p>7: Front rivet #4-40 H=5.8mm</p> <p>8: Rear rivet #4-40 H=3.2mm</p> |
|---|---|

■ **Number Of Contacts**

Unit: mm

Poles	DIM A	DIM B	DIM C					Poles	DIM A	DIM B	DIM C				
9	30.80	25.00	16.92					9	30.80	25.00	16.30				
15	39.20	33.32	25.25					15	39.20	33.32	24.70				
25	53.05	47.04	38.96					25	53.05	47.04	38.38				
37	69.40	63.50	55.42					37	69.40	63.50	54.80				