

D-Sub Connector H.D. Solder Type

■ MATERIAL

Insulator : Polyester
Contact Pin : Copper Alloy

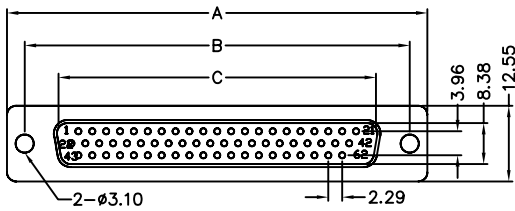
■ SPECIFICATION

Current Rate : 1 AMP
Insulation Resistance : 1000MΩMin. at DC 500V
Contact Resistance : 30mΩMax. at DC 100mA
Operation Temperature : -55°C to +105°C

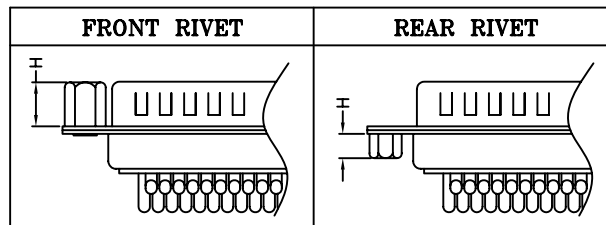
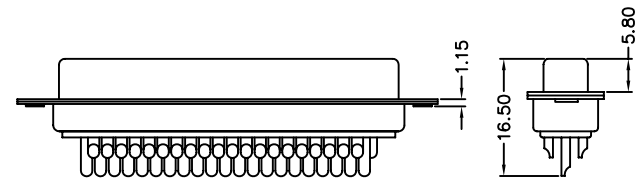
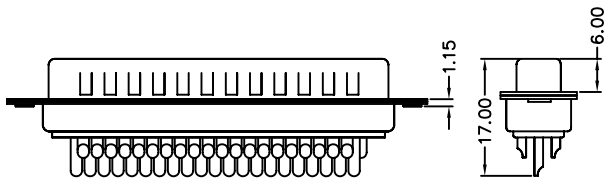
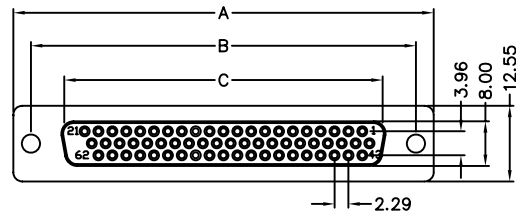


■ Detail Dimensions

982-31-Cxx203



982-31-Dxx203



■ Order Information

982-31- x xx x x 3
1 2 3 4

Standard Parts
982-31-Cxx203
982-31-Dxx203

- | | |
|---|---|
| <p>1. C: Male
D: Female</p> <p>2. No. of contacts</p> <p>3. 0: Black Insulator
2: White Insulator
8: Blue Insulator</p> | <p>4. 0: None Accessories</p> <p>1: Front rivet #4-40 H=4.0mm</p> <p>3: Rear rivet #4-40 H=4.0mm</p> <p>7: Front rivet #4-40 H=5.8mm</p> <p>8: Rear rivet #4-40 H=3.2mm</p> |
|---|---|

■ Number Of Contacts

Unit: mm

Poles	DIM A	DIM B	DIM C		Poles	DIM A	DIM B	DIM C				
15	30.81	24.99	16.92		15	30.81	24.99	16.33				
26	39.25	33.32	25.25		26	39.25	33.32	24.66				
44	53.04	47.04	38.96		44	53.04	47.04	38.38				
62	69.50	63.50	55.42		62	69.50	63.50	54.84				
* 78	67.10	61.00	52.81		* 78	67.10	61.00	52.40				
* 78P - 4 rows, please ask for spec. sheet, thanks!						* 78P - 4 rows, please ask for spec. sheet, thanks!						