

# Mini USB Connector B Type

## ■ MATERIAL

Insulator : High Temperature Polyester  
Contact Pin : Copper Alloy  
Shell : Stainless Steel

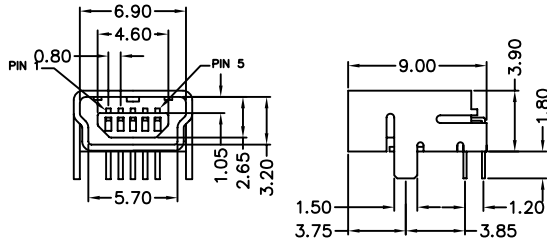
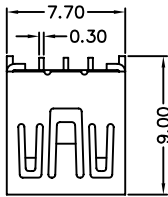
## ■ SPECIFICATION

Current Rate : 1 AMP at 250V DC  
Insulation Resistance : 1000MΩMin. at DC 500V  
Contact Resistance : 30mΩMax. at DC 100mA

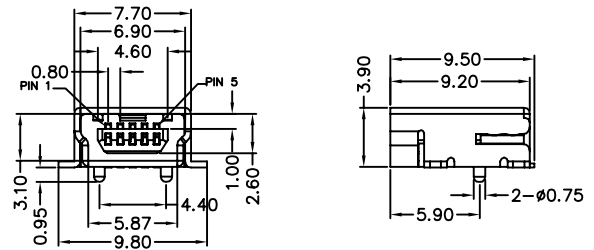
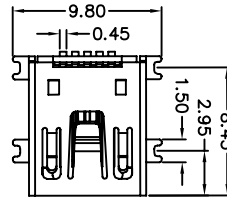


## ■ Detail Dimensions

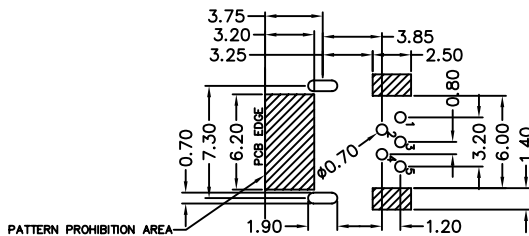
984-3x-805111



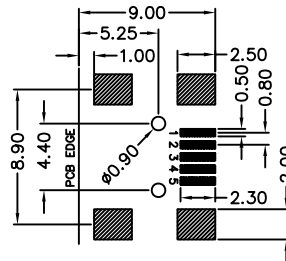
984-3x-805251



## ■ Recommended P.C.B Layout



PATTERN PROHIBITION AREA



## ■ Order Information

984-3x - 805 x xx  
1 2 3 4

1. 1: Tube package  
3: Reel package  
5: Tray package
2. No. of contacts
3. 1: R/A Type  
2: SMT R/A Type
4. Pinrex internal code

Standard Parts
984-31-805111
984-35-805251

Unit: mm