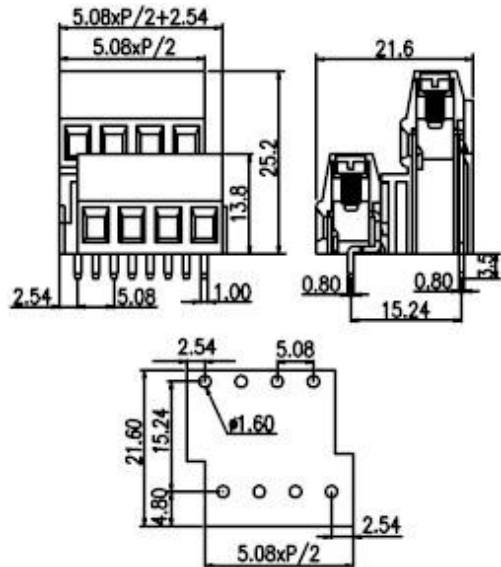


European P.C.B. type terminal blocks / EK series



**EK508V4L**



**Pitch: 5.08mm**

Approval		
Technical Data	UL	IEC
Rated voltage	300V	250V
Rated current	20A	10A
Conductor cross-section, solid (AWG/ mm <sup>2</sup> )	24~12 / 0.5~2.5	
Conductor cross-section, flexible (AWG/ mm <sup>2</sup> )	24~12 / 0.5~2.5	
Rated surge voltage (UL/IEC/Max.)	1.6 / 2 / 4 KV	
Torque (N-m)	0.50	
Screw	M2.5	
Wire strip length	6~7mm	
Pole	Cat. No.	
2x2	EK508V4L-04P	
3x2	EK508V4L-06P	
:	:	
:	:	