

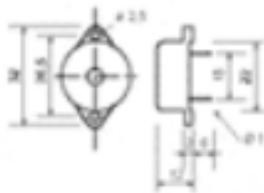
PMB23



PMB21 PCB



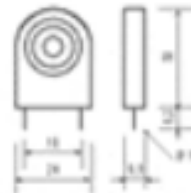
PMB22



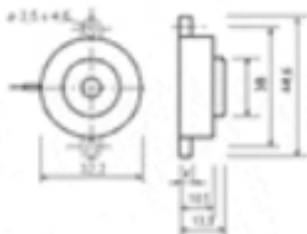
PMB22 PCB



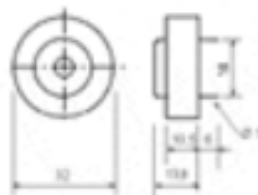
PMB23 PCB



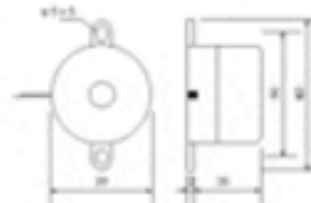
PMB24 PCB



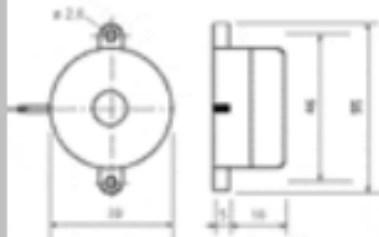
PMB28



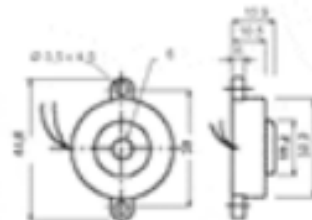
PMB28 PCB



**PMB35 LS
PMB35 LP
PMB35 LST**



PMB36



**PMBAC
PMB27 P
PMB7-10**

Piezoelectric

	Code	Type	Operating voltage Vcc	Tension nominale Vcc	Nominal current mA	Sound frequency (±500Hz)	Sound level dB
*	7340020	PMB - 21 PCB	2,4/28	12	4	4000	75 dB - 30 cm
*	7340041	PMB - 22	2,4/28	12	4	4000	75 dB - 30 cm
	7340022	PMB - 22 PCB	2,4/28	12	4	4000	75 dB - 30 cm
	7340023	PMB - 23	4,5/24	12	5	2800	85 dB - 50 cm