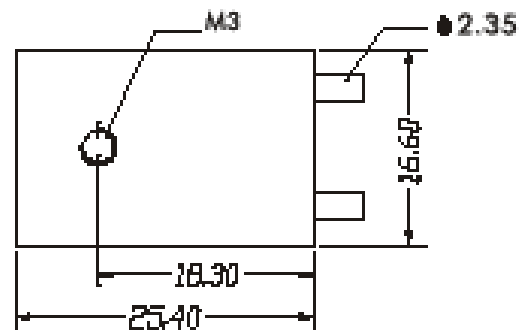
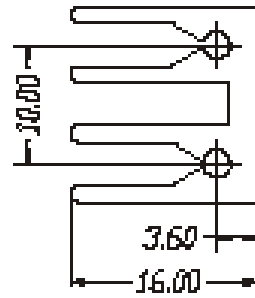
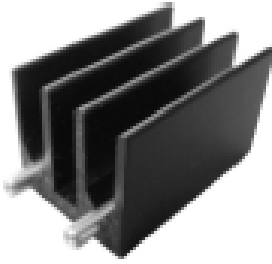


STANDARD EXTRUDED HEAT SINKS

SE930006A



Suits TO-220 Flat Pack Semis
Thermal Resistance 17.4°C/W
Forced Air Flow 4°C/W @ 500 LFM
Power Dissipation 2.5W @ 50°C
Bolt On and PC Pin Attachment
Rectangular Shape
Black Anodized Aluminum Material
Dimensions 16mm x 16mm x 25mm