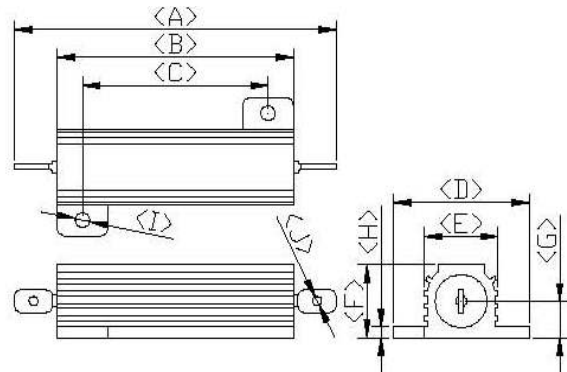


METAL-CLAD WIRE WOUND RESISTORS

GMR SERIES

- Compact Light Weight Electric Power Type



General Specification

Power Rating (W)	Dimensions (mm)									
	A ± 1	B ± 1	C ± 1	D ± 1	E ± 1	F ± 1	G ± 1	H ± 0.5	I ± 0.3	J ± 0.2
GMR-5W	25	15	10	16.5	8.5	8	4	2	2	2
GMR-10W	32	19	14	20	10.5	10	5	2	2	2
GMR-25W	47	28	18	27	14	15	7	2.2	3.2	2
GMR-50W	70	50	39	29	16	15.5	7	2.2	3.2	2
GMR-80W	96	66	35	47	27	28	13	5	5	2
GMR-100WS	96	66	35	47	27	28	13	5	5	2
GMR-100W	140	89	68	70	46	44.5	19	5	5	2
GMR-250W	160	113	93	84	53	55.5	25	5	5	2

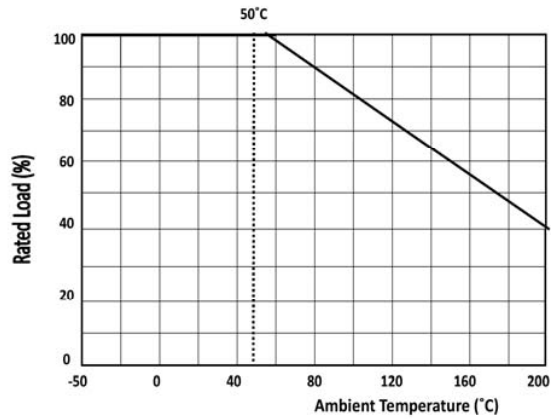
- Option: 1. Straight Leads on each End 0.8 or 1.0mm Diameter
 2. Screws Mounting With Nuts And Washers On each end
 80W-100WS-4x15mm, 100W-5x25mm, 250W-5x23mm

Electrical Specification

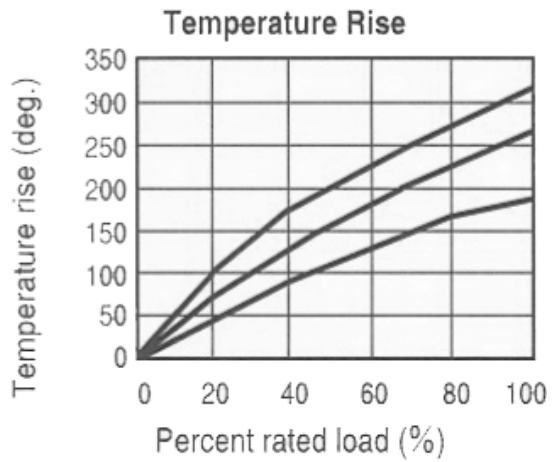
Characteristics	Limits	Test methods
Resistance tolerance	Resistance tolerance ± 5% (J) ± 10%(K)	JIS-C-5202 5-1
Temperature coefficient	± 200ppm/°C max.	JIS-C-5202 5-2b
Power rating load	$\Delta R/R \leq \pm (1\% + 0.05 \Omega)$ Surface temp. rise 350°C max.	JIS-C-5202 5-4
Short-time overload	$\Delta R/R \leq \pm (2\% + 0.05 \Omega)$ 100% rated power 5 seconds	JIS-C-5202 5-5
Insulation resistance	DC500V 100M Ω min	JIS-C-5202 5-6
Dielectric withstanding voltage	AC3000V 60 Sec.	JIS-C-5202 5-7



Power Derating Curve



Temperature Rise



Short-time Overload Rating

Load Time (second)	1	2	3	4	5	10	30	60	180	300	600	900
Power Increase(%)	2600	2000	1600	1400	1300	1000	600	450	200	150	120	110

Parts Number System

GMR	— 50W	100	J
Type	Wattages	Resistance	Tolerance
Golden Color Metal Clad Wire Wound Resistors		3 digit code for 5% 4 digit code for 1%	J = ±5% F = ±1%

