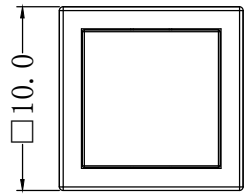
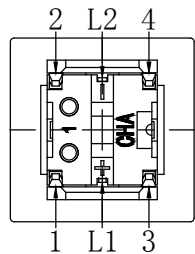
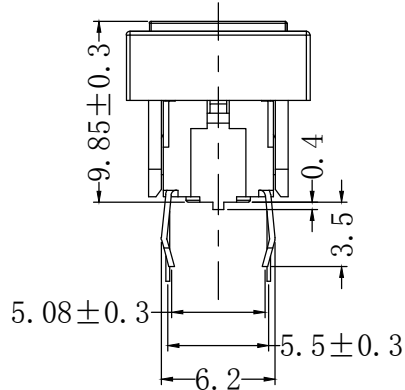
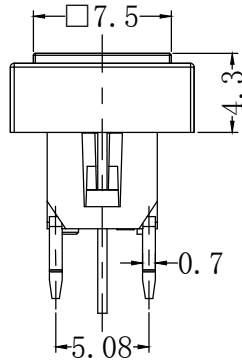
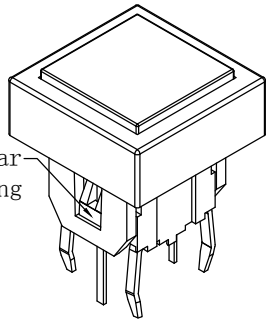


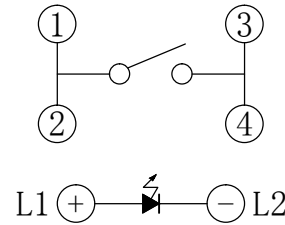
修 改	记号	内 容	修改者	日期



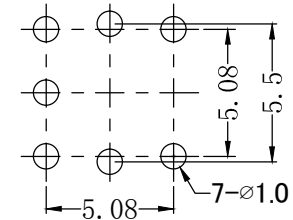
Negative polar coloring



CIRCUIT



P. C. B. LAYOUT



C601	A	1	0	-	-	1	S	R					
CATEGORY		BASIC SWITCH		CAP TYPE		FUNCTION		LED COLOR		LED BRIGHTNESS		LED TYPE	
A	Without cap	1	Square	-	Nothing	Non-Illuminated		1	Red	S	Standard	R	Round Gibbous
B	With cap	2	Round *	1		-	Standard type	2	Yellow	C	Customization	F	Flat head
		3	Bugle form	2		M	SMT type	3	Green				
				5			Illuminated	4	Blue				
				15		L	Standard type	5	White				
						ML	SMT type	6	Pure Green				
								7	Amber				
								12	Red/Yellow				
								13	Red/Green				
								23	Yellow/Green				

If you have any other requirements, please ask the sales representative for details

- 1.RATING :12VDC 50mA.
- 2.INSULATION RESISTANCE :100MΩ Min(250VDC).
- 3.DIELECTRIC STRENGTH :250VAC 50/60Hz for 1min.
- 4.CONTACT RESISTANCE :100mΩ Max.
- 5.ELECTRICALLY LIFE :100,000cycles.
- 6.OPERATING TEMPERATURE RANGE :-20°C~+70°C.
- 7.OPERATING FORCE :160±50g / 250±50g.
- 8.TRAVEL :0.25±0.1 mm
- 9.IT IS RECOMMENDED THAT THE NUMBER OF TIMES TO PULL OUT THE CAP SHOULD NOT EXCEED 3

序号	零件名称	材质	数量	备注	Color	VR	IF	Recommended Operating Current	VF		
									Nom.	Max	
					Red	DC 5V	20mA	20mA	2.0 V	2.4 V	
1	外壳	尼龙	1	黑色	Yellow	DC 5V	20mA	20mA	2.3 V	2.5 V	
2	散光片	PC	1	白色	Green	DC 5V	20mA	20mA	2.4 V	2.7 V	
3	推柄	尼龙	1	白色	Blue	DC 5V	20mA	20mA	3.3 V	3.6 V	
4	底座	塑胶	尼龙	1	黑色	White	DC 5V	20mA	20mA	3.0 V	3.6 V
		端子	黄铜	1	镀银						
5	弹片	不锈钢	1		Full Green	DC 5V	20mA	20mA	3.0 V	3.6 V	
6	LED灯		1		Amber	DC 5V	20mA	20mA	2.3 V	2.5 V	

本公司智慧财产，未经同意不得复制
Without permission, copying is strictly prohibited. Chau-hua

ALL DIMENSIONS ARE IN MILLIMETERS, GENERAL TOLERANCES MAX. ± 0.20mm.

制图	H H	比例		日期	
设计	H H	单位	MM	材质	
校对	LZY	全周倒角		数量	
审核	M W	视图		处理	



昭华集团(香港)有限公司
CHAU-HUA GROUP (HONGKONG) CO., LIMITED

名称 C601B-111L
型号 C601 Series

X-ON Electronics

Largest Supplier of Electrical and Electronic Components

Click to view similar products for [Tactile Switches](#) category:

Click to view products by [CHA](#) manufacturer:

Other Similar products are found below :

[5GTH92001](#) [5GTH9202242](#) [6407-250V-25273P](#) [ADTSA62NV](#) [ADTSA62RV](#) [B3F-3123](#) [1977177-8](#) [1977266-1](#) [ADTSA63NV](#)
[ADTSM21NSVTR](#) [ADTSM25RVTR](#) [ADTSM32NVTR](#) [ADTSMW64RV](#) [FSMRA4JHA04](#) [GS4.70F300QP](#) [3ESH9R](#) [KSC241J](#) [SP DELTA](#)
[LFS](#) [3FTL600RAS](#) [3FTL640RAS](#) [Y96K132V0FPLFS](#) [5GTH9658222](#) [ADTSM31NVTR](#) [2-1977120-7](#) [TSJW-5.2-260-TR](#)
[KMT011MNGJLHS](#) [70-201.0](#) [ADTSG648NV](#) [ADTSM62KSVTR](#) [ADTSM648NV](#) [95C06E3RAT](#) [5GTH96561](#) [3ATH9Q](#) [FSM4JSMLXTR](#)
[FSM4JSMXL](#) [FSMRA8JHA04](#) [HARS0073](#) [Y97HS12A5RAFP](#) [Y97BT23B2HAFP](#) [Y33R411N9FPLFT](#) [Y31C01402FPLFS](#)
[PTS645SK50SMTR92](#) [ADTSM32NVB](#) [KMS233GPWTLFG](#) [Y78B42324FP](#) [Y33R21116FPLFT](#) [Y31B43131FPLFG](#) [Y78B64124FP](#)
[Y71243251FP](#) [Y33R31119FPLFT](#) [Y97HS12A5TAFP](#)