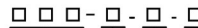


## SPECIFICATIONS

Contact Rating	
Switching	: 25mA at 24VDC
Non-Switching	: 100mA at 50VDC
Initial	
After life	: 50mΩ Max
	: 100mΩ Max
Insulation Resistance	: 100mΩ Max, Min at 100VDC
Dielectric Strength	: 300VAC for 60 seconds
Switch Capacitance	: 5pF Max at 1MHz
Operation Temperature	: -30°C to +85°C
Storage Temperature	: -40°C to +85°C
Operation Force	: 500gf Max
Mechanical Life	: 2000 cycles operations

## HOW TO ORDER



Package Style:  
 □ = Tube  
 T/R= Tape & Reel

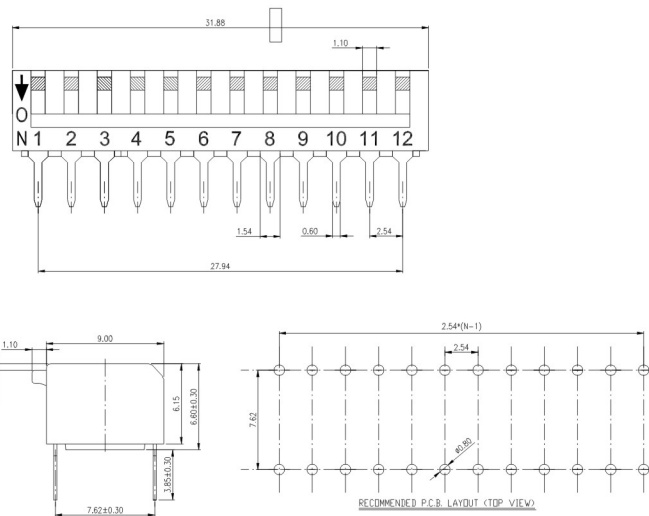
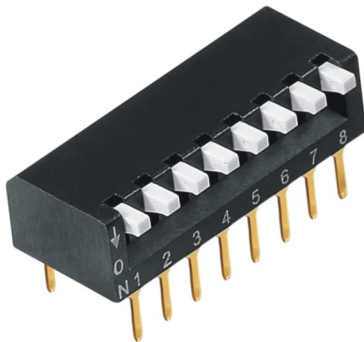
Soldering:  
 V = Lead Free Solderable

Number Of Positions:  
 01 = 1 Position  
 02 = 2 Position  
 03 = 3 Position  
 04 = 4 Position  
 05 = 5 Position  
 06 = 6 Position  
 07 = 7 Position  
 08 = 8 Position  
 09 = 9 Position  
 10 = 10 Position  
 12 = 12 Position

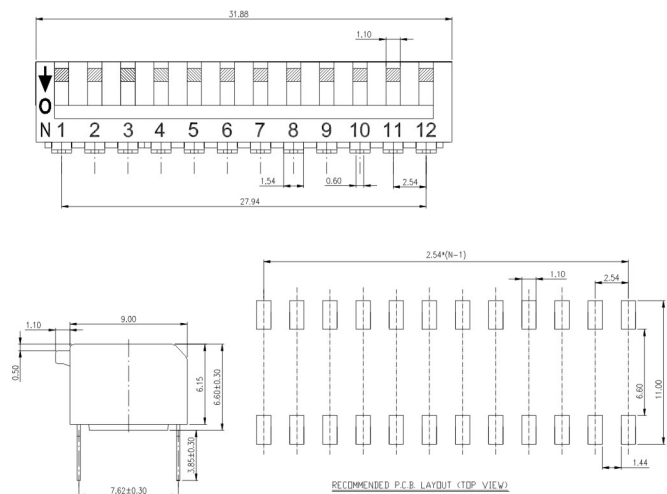
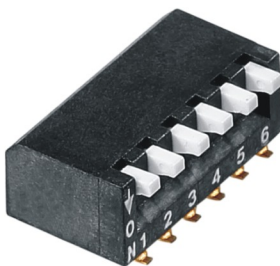
EPH = Through Hole Type Dip Switch  
 EPM = Gull Wing Terminal S.M.T

No. of Positions		2	3	4	5	6	7	8	9	10	12
A	mm	6.08	8.72	11.90	14.44	16.98	19.52	22.06	24.60	27.14	32.22
	inch	0.23	3.43	0.46	0.56	0.66	0.76	0.86	0.96	1.06	12.68

## EPH SERIES



## EPM SERIES



## X-ON Electronics

Largest Supplier of Electrical and Electronic Components

*Click to view similar products for [DIP Switches/SIP Switches](#) category:*

*Click to view products by [Challenge](#) manufacturer:*

Other Similar products are found below :

[78M03S](#) [79B10T](#) [8136-475G4T](#) [G7G-1A2-CB-DC12](#) [A7SS-M](#) [DBP 2110](#) [DBP 2112](#) [DBS1008](#) [DHN02FTVTR](#) [DHN10T](#) [DHS108](#)  
[DPL08TN](#) [DRD16CSE04](#) [DRR4010](#) [DRR60016](#) [DRS4016](#) [BD06E](#) [1825008-1](#) [1825444-1](#) [25.350.0653.0](#) [LA2-DC12](#) [SBS 5004 TG](#)  
[SDA10H1BDA](#) [97R06ST](#) [A2C-2A5](#) [1825444-7](#) [ADE08SA04](#) [ADE12S04](#) [2161391-1](#) [2-1825058-8](#) [CCVA 2.5/ 4-G-5.08](#) [P26THRR32](#)  
[25.330.0653.1](#) [25.352.0353.0](#) [MDG305ST](#) [IKN0600000](#) [IKN0800000](#) [LA2-002-DC24](#) [DBP2008](#) [DBS1003](#) [DBS2008](#) [438872000](#)  
[DRD10CRAE04](#) [DRS1604](#) [DSR02T](#) [DSS 208 N](#) [5-1825033-1](#) [106-SDN06-EV](#) [1-1437507-6](#) [E2FMX2D1M1TGJ03M](#)  
[E3ZMCT81M1TJ03M](#)