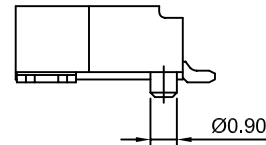


P.C.B. LAYOUT



SPECIFICATIONS:

Current Rating: 1A AC,DC
 Voltage Rating: 150V AC,DC
 Temperature Range: -40°C ~ +105°C
 Contact Resistance: 30mΩ Max.
 Insulation Resistance: 500MΩ Min.
 Withstanding Voltage: 500V AC/minute
 Pin Material: Brass/Tin over Nickel
 Solder Tabs: Brass/Tin over Nickel
 Material: Nylon 9T, UL94V-0(Ivory)

Ordering Information & Dimensions

PART NO.	Dimensions	
	A	B
A1255WR-S-F-2P	1.25	7.45
A1255WR-S-F-3P	2.50	8.70
A1255WR-S-F-4P	3.75	9.95
A1255WR-S-F-5P	5.00	11.20
A1255WR-S-F-6P	6.25	12.45
A1255WR-S-F-7P	7.50	13.70
A1255WR-S-F-8P	8.75	14.95
A1255WR-S-F-9P	10.00	16.20
A1255WR-S-F-10P	11.25	17.45
A1255WR-S-F-11P	12.50	18.70
A1255WR-S-F-12P	13.75	19.95
A1255WR-S-F-13P	15.00	21.20
A1255WR-S-F-14P	16.25	22.45
A1255WR-S-F-15P	17.50	23.70
A1255WR-S-F-20P	23.75	29.95
A1255WR-S-F-25P	30.00	36.20
A1255WR-S-F-30P	36.25	42.45

Unit: mm

CJT CHANGJIANG CONNECTORS CO.,LTD.
CHANGJIANG CONNECTORS

Unit	Scale	Sheet
mm	4:1	1 of 1

Draw BY:	Approved :
LIZQ	GONGYB

General Tolerance	
x.xx±0.25	ANGLE±
x.xx±0.20	
x.xx±0.15	

Title :
1.25mm PITCH
90° WAFER-SMT TYPE
ULTRA LOW PROFILE
WITHOUT-BOSS

DRAW NO : A1255WR-S-F-XP

REV
A0

A0	NEW RELEASE	2005.05.10
REV	DESCRIPTION	DATE

X-ON Electronics

Largest Supplier of Electrical and Electronic Components

Click to view similar products for [Headers & Wire Housings](#) category:

Click to view products by [Changjiang](#) manufacturer:

Other Similar products are found below :

[57102-F02-18ULF](#) [58102-G61-06LF](#) [582553-1](#) [0009485154](#) [009176003701906](#) [0050291907](#) [02.125.8002.8](#) [609-3404](#) [61062-3](#) [622-0430](#)
[622-3653LF](#) [63453-116](#) [636-1030](#) [636-1427](#) [636-3427](#) [636-4007](#) [641938-9](#) [65495-038](#) [65692-001LF](#) [65781-018](#) [65781-047](#) [65817-015LF](#)
[66207-023LF](#) [67016-026LF](#) [67095-007LF](#) [68631-112](#) [68645-018](#) [68648-049](#) [699319-000](#) [M90C108951C](#) [70.362.1628.0](#) [70-4210](#) [70-4226B](#)
[70-4853B](#) [707-5020](#) [707-5028](#) [71.350.2428.0](#) [71961-016LF](#) [733-134](#) [754199-000](#) [760-3052](#) [787-8014-00](#) [FCN-367T-T012/H](#)
[80.063.4001.1](#) [800-90-001-10-001000](#) [801-43-002-10-013000](#) [801-43-006-10-002000](#) [803-41-018-10-001000](#) [803-43-014-20-001000](#)
[803-43-024-10-001000](#)