

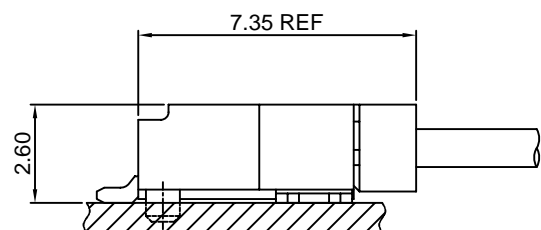
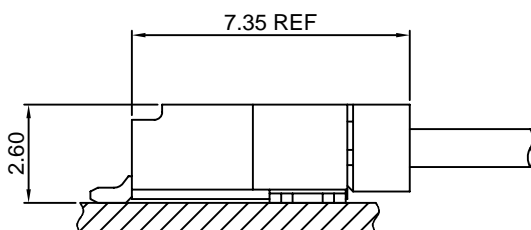
Specifications

- Current rating:1A AC,DC
- Voltage rating:150V AC,DC
- Temperature range:-40°C~+105°C
- Contact resistance:30mΩMax.
- Insulation resistance:500MΩMin.
- Withstanding voltage:500V AC/minute
- *Compliant with RoHS and REACH*
- *Meet the HF/Halogen Free,need to customize*
- *Contact CJT for details*

Standards



Assembly layout

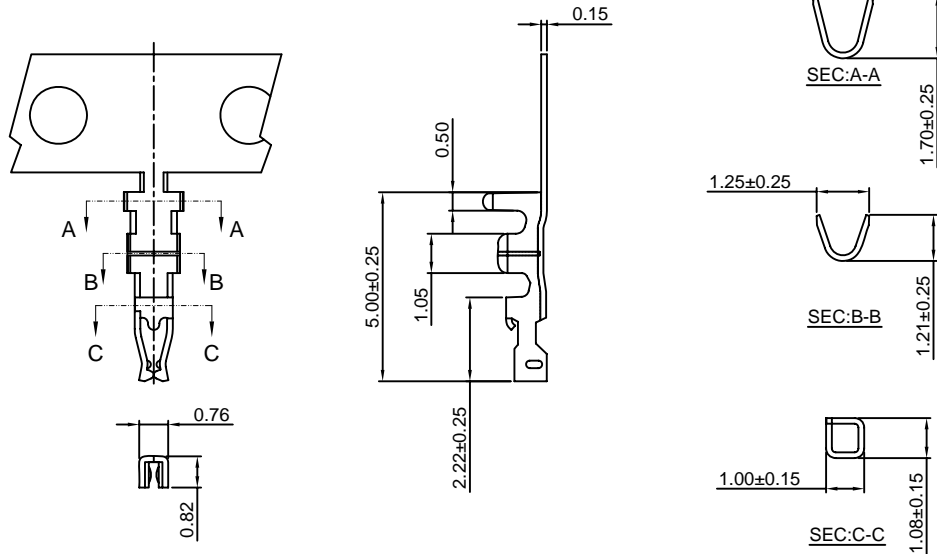


A1255-T

1.25mm pitch Crimp Terminal

Reference Informations:

*Used in CJT A1255 series Housing



Ordering information & Specifications:

Unit:mm

Part NO.	Wire Range	Insulation O.D.	Material	Finish	Qty/reel
A1255-TP	AWG#26-#32	1.00mm(max)	Phosphor Bronze	Tin over Nickel	10,000 PCS
A1255-GP	AWG#26-#32	1.00mm(max)	Phosphor Bronze	Gold over Nickel	10,000 PCS

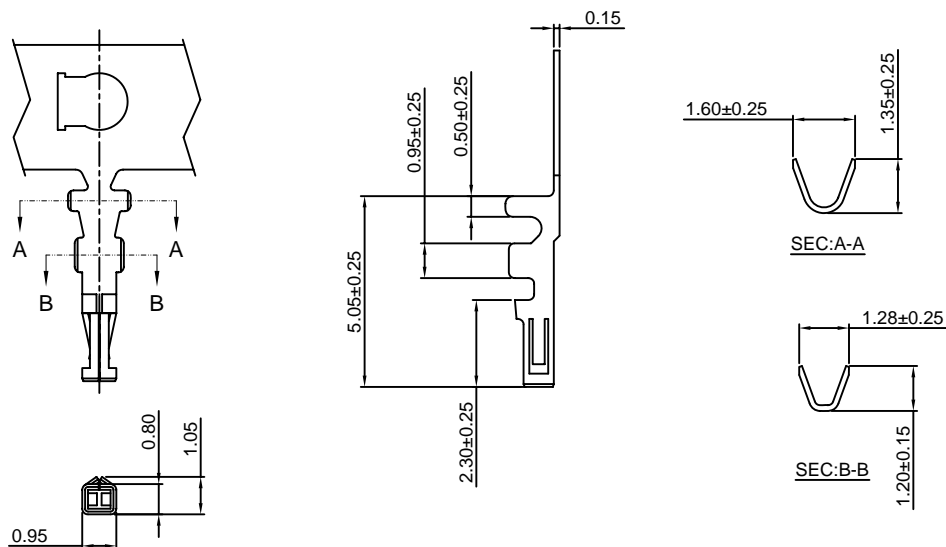
Optional Gold plating available but MOQ requested

A1255-T-A

1.25mm pitch Crimp Terminal

Reference Informations:

*Used in CJT A1255A series Housing



Ordering information & Specifications:

Unit:mm

Part NO.	Wire Range	Insulation O.D.	Material	Finish	Qty/reel
A1255-TP-A	AWG#28-#32	0.90mm(max)	Phosphor Bronze	Tin over Nickel	15,000 PCS
A1255-GP-A	AWG#28-#32	0.90mm(max)	Phosphor Bronze	Gold over Nickel	15,000 PCS

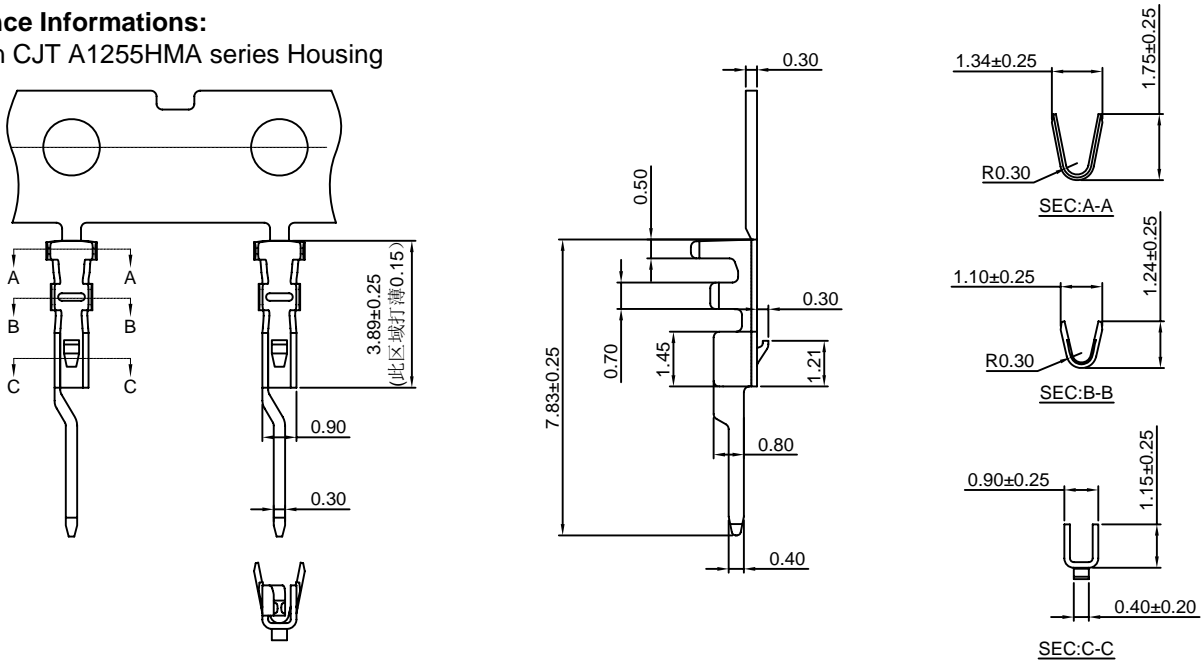
Optional Gold plating available but MOQ requested

A1255MA-T

1.25mm pitch Crimp Terminal

Reference Informations:

*Used in CJT A1255HMA series Housing



Ordering information & Specifications:

Unit:mm

Part NO.	Wire Range	Insulation O.D.	Material	Finish	Qty/reel
A1255MA-TP	AWG#28-#32	0.90mm(max)	Phosphor Bronze	Tin over Nickel	15,000 PCS
A1255MA-GP	AWG#28-#32	0.90mm(max)	Phosphor Bronze	Gold over Nickel	15,000 PCS

Optional Gold plating available but MOQ requested

A1255H

1.25mm pitch Housing

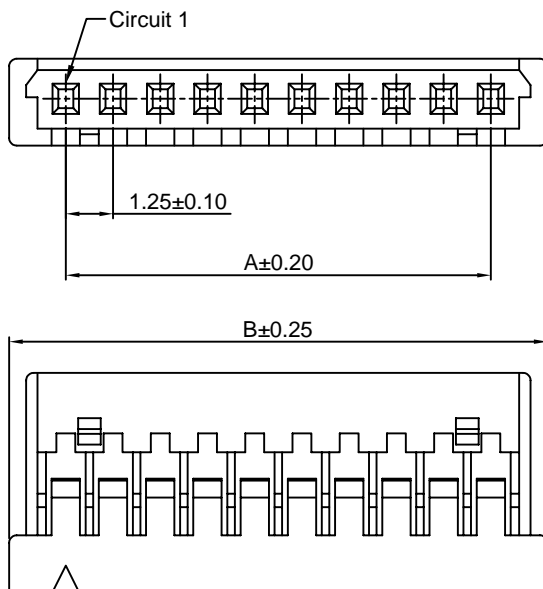
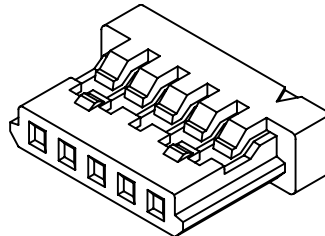
Reference Informations:

*Material:Nylon 66,UL94V-0

*Suitble CJT A1255 series Terminal

*Mates with CJT A1255 series Wafer

*Color:Gray



Ordering Information & Dimensions:

PART NO.	Dimensions	
	A	B
A1255H-2P	1.25	4.35
A1255H-3P	2.50	5.60
A1255H-4P	3.75	6.85
A1255H-5P	5.00	8.10
A1255H-6P	6.25	9.35
A1255H-7P	7.50	10.60
A1255H-8P	8.75	11.85
A1255H-9P	10.00	13.10
A1255H-10P	11.25	14.35
A1255H-11P	12.50	15.60
A1255H-12P	13.75	16.85
A1255H-13P	15.00	18.10
A1255H-14P	16.25	19.35
A1255H-15P	17.50	20.60
A1255H-20P	23.75	26.85
A1255H-25P	30.00	33.10
A1255H-30P	36.25	39.35

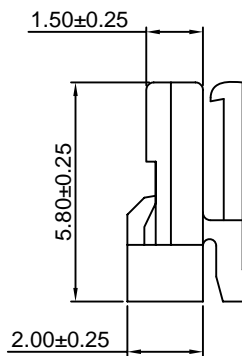
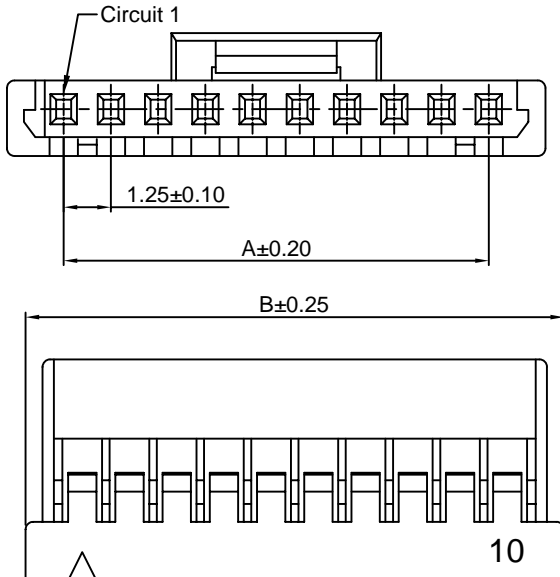
Unit: mm

A1255HA

1.25mm pitch Housing

Reference Informations:

- *Material:Nylon 66,UL94V-0
- *Suitble CJT A1255MA series Terminal
- *Mates with CJT A1255HA series Housing
- *Color:White



Ordering Information & Dimensions:

PART NO.	Dimensions	
	A	B
A1255HA-2P	1.25	4.35
A1255HA-3P	2.50	5.60
A1255HA-4P	3.75	6.85
A1255HA-5P	5.00	8.10
A1255HA-6P	6.25	9.35
A1255HA-7P	7.50	10.60
A1255HA-8P	8.75	11.85
A1255HA-9P	10.00	13.10
A1255HA-10P	11.25	14.35
A1255HA-11P	12.50	15.60
A1255HA-12P	13.75	16.85
A1255HA-13P	15.00	18.10
A1255HA-14P	16.25	19.35
A1255HA-15P	17.50	20.60
A1255HA-20P	23.75	26.85
A1255HA-25P	30.00	33.10
A1255HA-30P	36.25	39.35

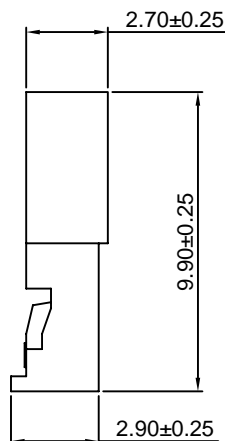
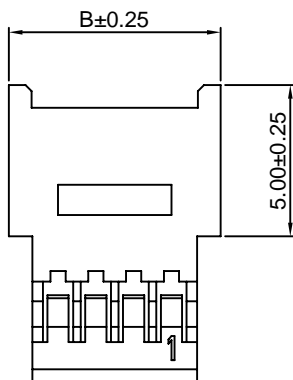
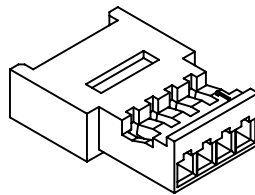
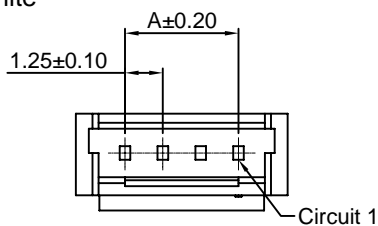
Unit: mm

A1255HMA

1.25mm pitch Housing

Reference Informations:

- *Material:Nylon 66,UL94V-0
- *Suitble CJT A1255MA series Terminal
- *Mates with CJT A1255HA series Housing
- *Color:White



Ordering Information & Dimensions:

PART NO.	Dimensions	
	A	B
A1255HMA-2P	1.25	4.50
A1255HMA-3P	2.50	5.75
A1255HMA-4P	3.75	7.00
A1255HMA-5P	5.00	8.25
A1255HMA-6P	6.25	9.50
A1255HMA-7P	7.50	10.75
A1255HMA-8P	8.75	12.00
A1255HMA-9P	10.00	13.25
A1255HMA-10P	11.25	14.50
A1255HMA-11P	12.50	15.75
A1255HMA-12P	13.75	17.00
A1255HMA-13P	15.00	18.25
A1255HMA-14P	16.25	19.50
A1255HMA-15P	17.50	20.75
A1255HMA-20P	23.75	22.00
A1255HMA-25P	30.00	33.25

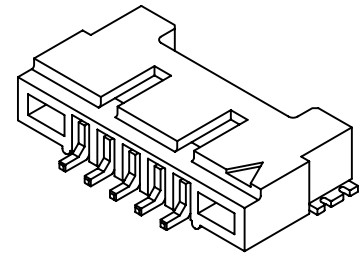
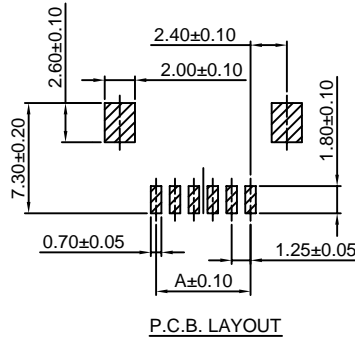
Unit: mm

A1255WR-S

1.25mm pitch 90° Wafer Without Boss -SMT TYPE

Reference Informations:

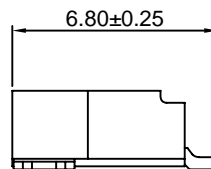
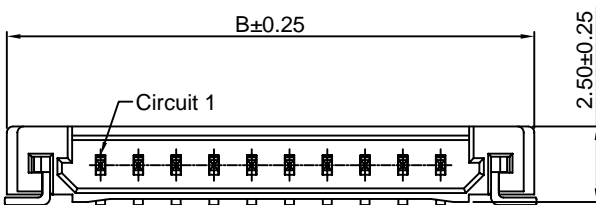
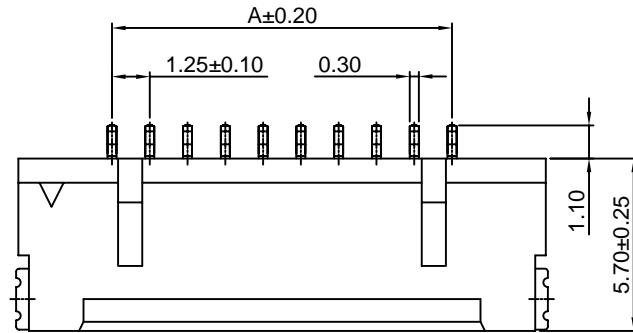
- *Material: Pin: Brass/Tin over Nickel
Solder Tabs: Brass/Tin over Nickel
Insulator: Nylon 9T, UL94V-0
- *Mates with CJT A1255 series Housing
- *Color: Ivory



Ordering Information & Dimensions:

PART NO.	Dimensions	
	A	B
A1255WR-S-2P	1.25	7.45
A1255WR-S-3P	2.50	8.70
A1255WR-S-4P	3.75	9.95
A1255WR-S-5P	5.00	11.20
A1255WR-S-6P	6.25	12.45
A1255WR-S-7P	7.50	13.70
A1255WR-S-8P	8.75	14.95
A1255WR-S-9P	10.00	16.20
A1255WR-S-10P	11.25	17.45
A1255WR-S-11P	12.50	18.70
A1255WR-S-12P	13.75	19.95
A1255WR-S-13P	15.00	21.20
A1255WR-S-14P	16.25	22.45
A1255WR-S-15P	17.50	23.70
A1255WR-S-20P	23.75	29.95
A1255WR-S-25P	30.00	36.20
A1255WR-S-30P	36.25	42.45

Unit: mm

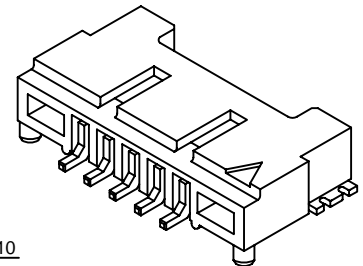
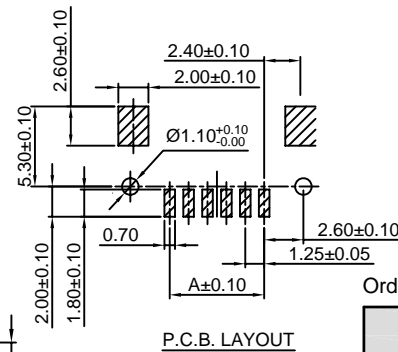


A1255WR-S-F

1.25mm pitch 90° Wafer With Boss -SMT TYPE

Reference Informations:

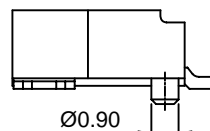
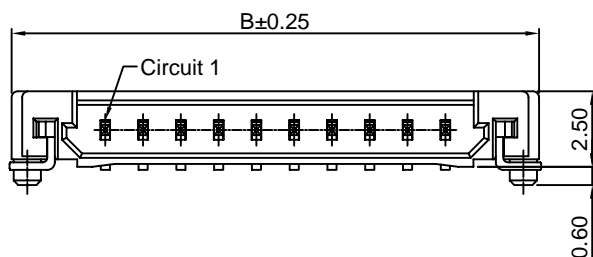
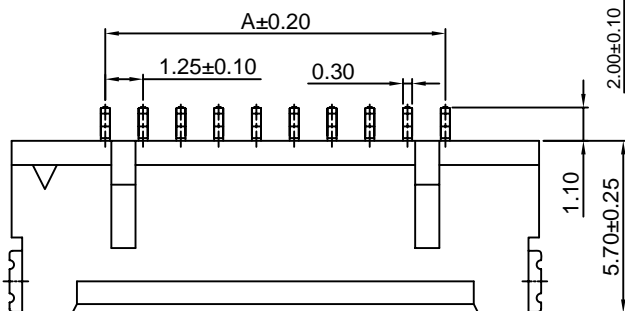
- *Material: Pin: Brass/Tin over Nickel
Solder Tabs: Brass/Tin over Nickel
Insulator: Nylon 9T, UL94V-0
- *Mates with CJT A1255 series Housing
- *Color: Ivory



Ordering Information & Dimensions:

PART NO.	Dimensions	
	A	B
A1255WR-S-F-2P	1.25	7.45
A1255WR-S-F-3P	2.50	8.70
A1255WR-S-F-4P	3.75	9.95
A1255WR-S-F-5P	5.00	11.20
A1255WR-S-F-6P	6.25	12.45
A1255WR-S-F-7P	7.50	13.70
A1255WR-S-F-8P	8.75	14.95
A1255WR-S-F-9P	10.00	16.20
A1255WR-S-F-10P	11.25	17.45
A1255WR-S-F-11P	12.50	18.70
A1255WR-S-F-12P	13.75	19.95
A1255WR-S-F-13P	15.00	21.20
A1255WR-S-F-14P	16.25	22.45
A1255WR-S-F-15P	17.50	23.70
A1255WR-S-F-20P	23.75	29.95
A1255WR-S-F-25P	30.00	36.20
A1255WR-S-F-30P	36.25	42.45

Unit: mm

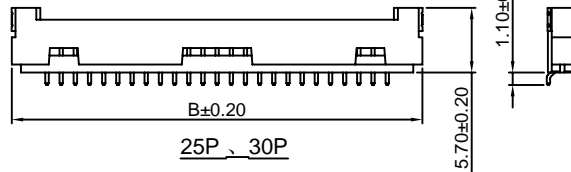
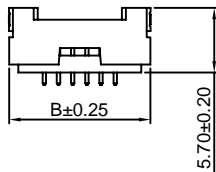
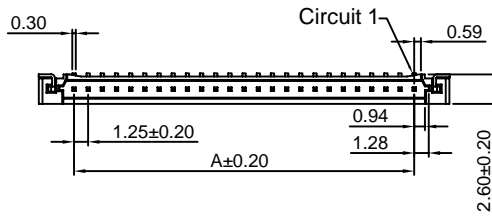
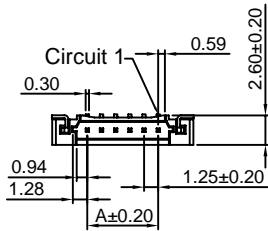
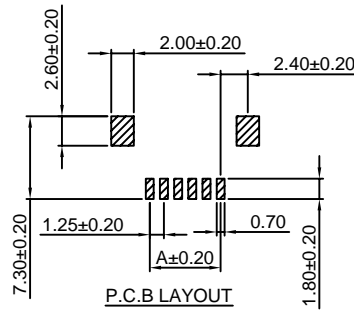
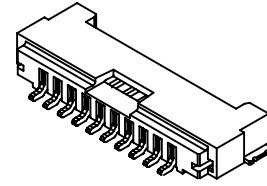


A1255WRA-S

1.25mm pitch 90° Wafer Without Boss -SMT TYPE

Reference Informations:

- *Material: Pin: Brass/Tin over Nickel
Solder Tabs: Brass/Tin over Nickel
Insulator: Nylon 6T, UL94V-0
- *Mates with CJT A1255HA series Housing
- *Color: Beige



Ordering Information & Dimensions:

PART NO.	Dimensions	
	A	B
A1255WRA-S-2P	1.25	7.45
A1255WRA-S-3P	2.50	8.70
A1255WRA-S-4P	3.75	9.95
A1255WRA-S-5P	5.00	11.20
A1255WRA-S-6P	6.25	12.45
A1255WRA-S-7P	7.50	13.70
A1255WRA-S-8P	8.75	14.95
A1255WRA-S-9P	10.00	16.20
A1255WRA-S-10P	11.25	17.45
A1255WRA-S-11P	12.50	18.70
A1255WRA-S-12P	13.75	19.95
A1255WRA-S-13P	15.00	21.20
A1255WRA-S-14P	16.25	22.45
A1255WRA-S-15P	17.50	23.70
A1255WRA-S-20P	23.75	29.95
A1255WRA-S-25P	30.00	36.20
A1255WRA-S-30P	36.25	42.45

Unit: mm

X-ON Electronics

Largest Supplier of Electrical and Electronic Components

Click to view similar products for [Headers & Wire Housings](#) category:

Click to view products by [Changjiang](#) manufacturer:

Other Similar products are found below :

[57102-F02-18ULF](#) [58102-G61-06LF](#) [0009485154](#) [009176003701906](#) [0050291907](#) [02.125.8002.8](#) [609-3404](#) [61062-3](#) [622-0430](#) [622-3653LF](#)
[63453-116](#) [636-1030](#) [636-1427](#) [636-3427](#) [636-4007](#) [641938-9](#) [644827-2](#) [65495-038](#) [65692-001LF](#) [65781-018](#) [65781-047](#) [65817-010LF](#)
[65817-015LF](#) [66207-023LF](#) [67016-026LF](#) [67095-007LF](#) [68631-112](#) [68645-018](#) [68648-049](#) [699319-000](#) [70.362.1628.0](#) [70-4210](#) [70-4226B](#)
[70-4853B](#) [707-5020](#) [707-5028](#) [71.350.2428.0](#) [71961-016LF](#) [733-134](#) [754199-000](#) [760-3052](#) [787-8014-00](#) [FCN-367T-T012/H](#) [80.063.4001.1](#)
[800-90-001-10-001000](#) [800-90-010-10-002000](#) [801-43-002-10-013000](#) [801-43-006-10-002000](#) [803-41-018-10-001000](#) [803-43-014-20-](#)
[001000](#)