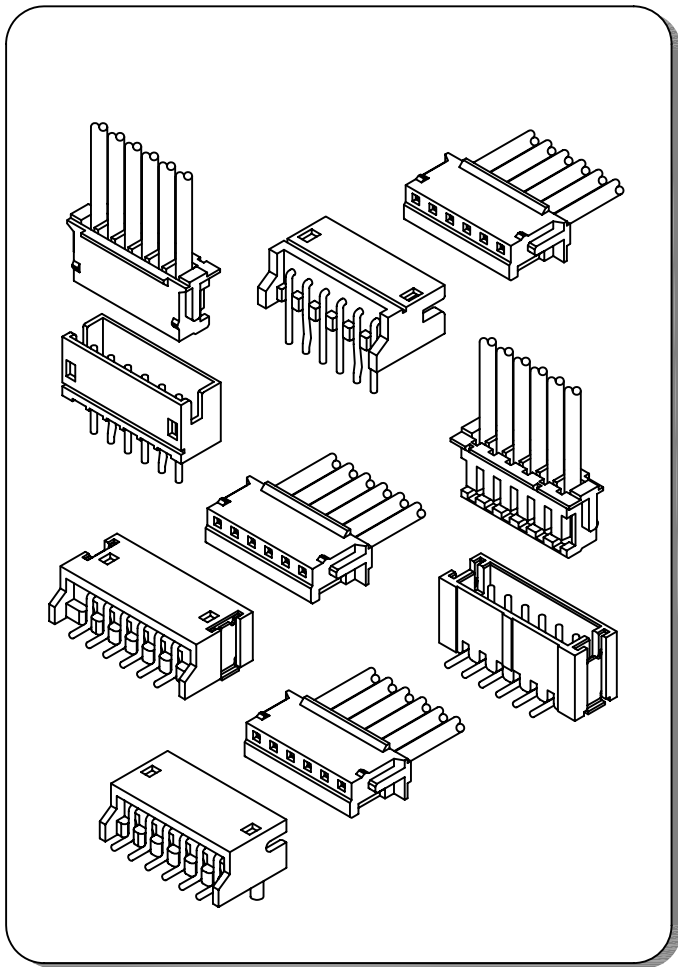


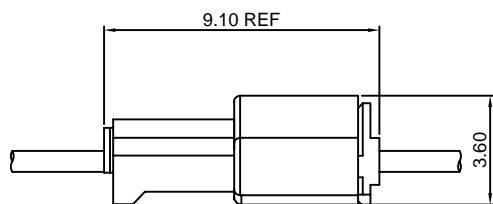
Specifications

- Current rating:1A AC,DC
- Voltage rating:100V AC,DC
- Temperature range:-40°C~+105°C
- Contact resistance:20mΩMax.
- Insulation resistance:500MΩMin.
- Withstanding voltage:500V AC/minute
- *Compliant with RoHS and REACH*
- *Meet the HF/Halogen Free,need to customize*
- *Contact CJT for details*

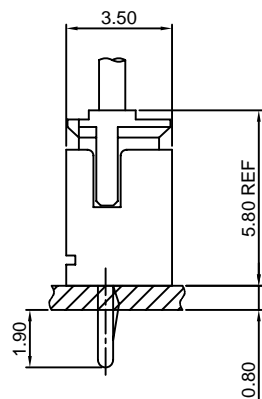
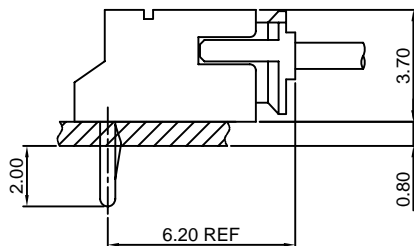
Standards



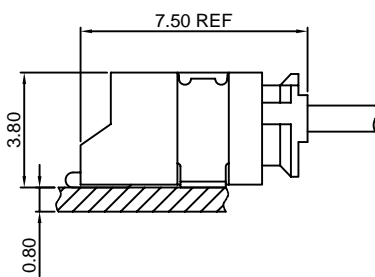
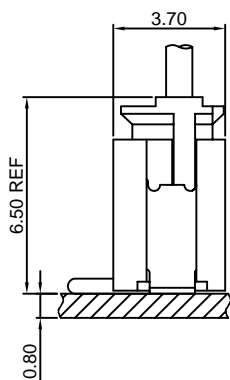
Assembly layout



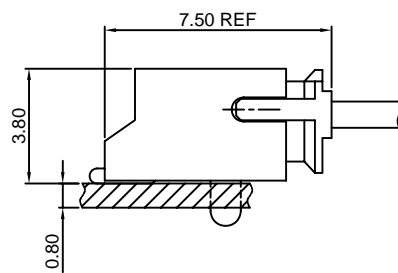
wire to wire



DIP TYPE



SMT TYPE

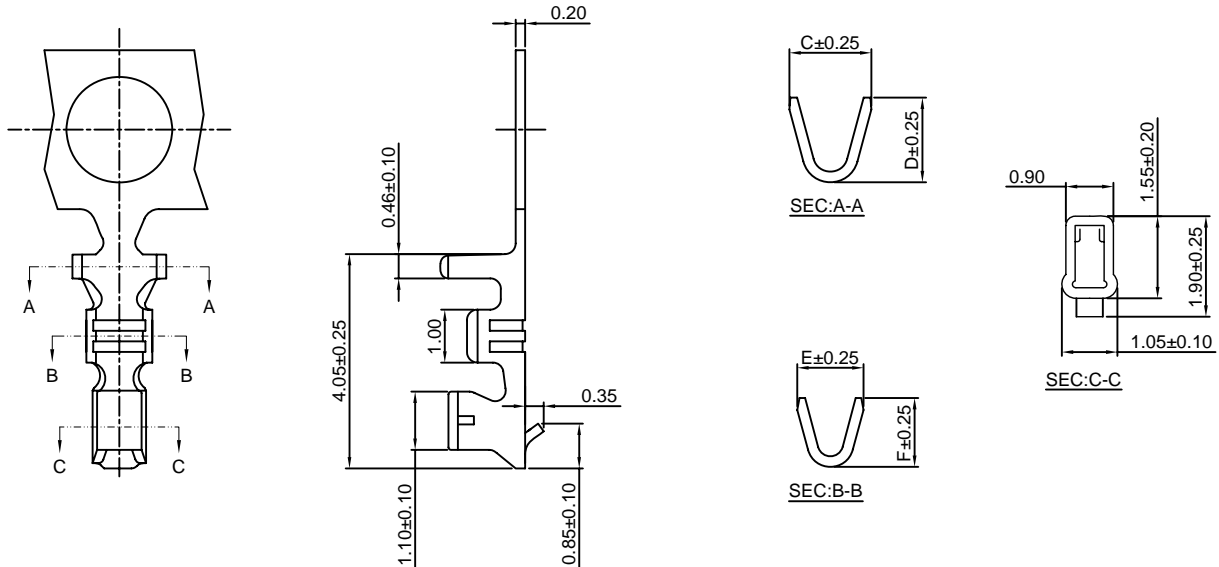


A1501-T

1.50mm pitch Crimp Terminal

Reference Informations:

*Used in CJT A1501H-XP series Housing



Ordering information & Specifications:

Unit:mm

| Part NO. | Wire Range | Insulation O.D. | Material | Finish | C | D | E | F | Qty/reel |
|------------|------------|-----------------|-----------------|------------------|------|------|------|------|------------|
| A1501-TP | AWG#26-#32 | 1.10mm(max) | Phosphor Bronze | Tin over Nickel | 1.55 | 1.60 | 1.25 | 1.30 | 10,000 PCS |
| A1501-GP | AWG#26-#32 | 1.10mm(max) | Phosphor Bronze | Gold over Nickel | 1.55 | 1.60 | 1.25 | 1.30 | 10,000 PCS |
| A1501-TP-H | AWG#24-#30 | 1.50mm(max) | Phosphor Bronze | Tin over Nickel | 1.80 | 1.85 | 1.25 | 1.30 | 15,000 PCS |
| A1501-GP-H | AWG#24-#30 | 1.50mm(max) | Phosphor Bronze | Gold over Nickel | 1.80 | 1.85 | 1.25 | 1.30 | 15,000 PCS |

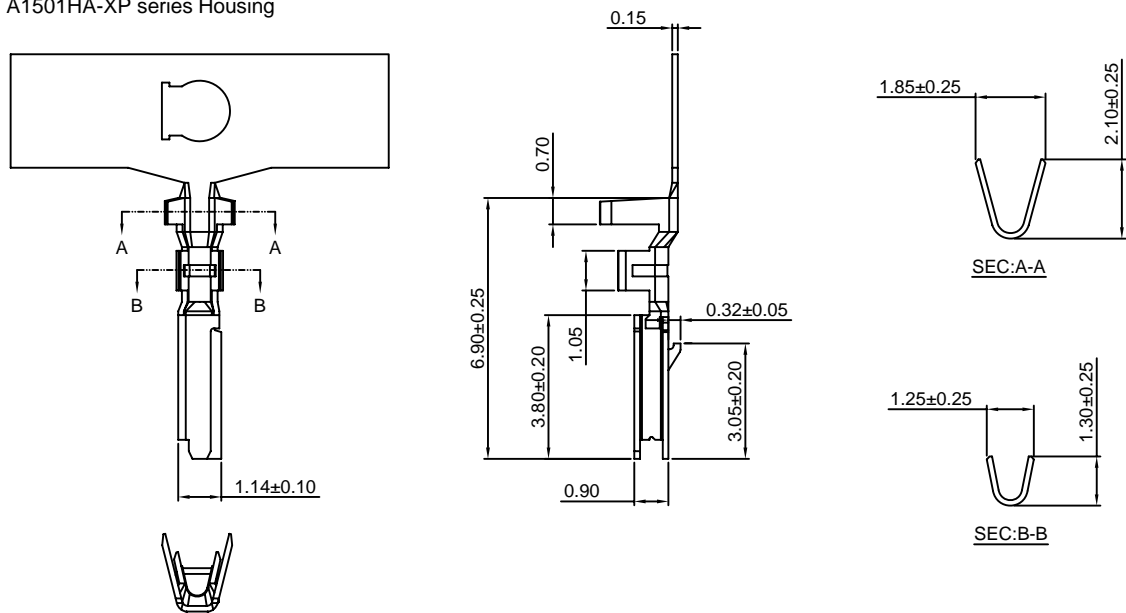
Optional Gold plating available but MOQ requested

A1501-T-A

1.50mm pitch Crimp Terminal

Reference Informations:

*Used in CJT A1501HA-XP series Housing



Ordering information & Specifications:

Unit:mm

| Part NO. | Wire Range | Insulation O.D. | Material | Finish | Qty/reel |
|------------|------------|-----------------|-----------------|------------------|------------|
| A1501-TP-A | AWG#24-#28 | 1.28mm(max) | Phosphor Bronze | Tin over Nickel | 10,000 PCS |
| A1501-GP-A | AWG#24-#28 | 1.28mm(max) | Phosphor Bronze | Gold over Nickel | 10,000 PCS |

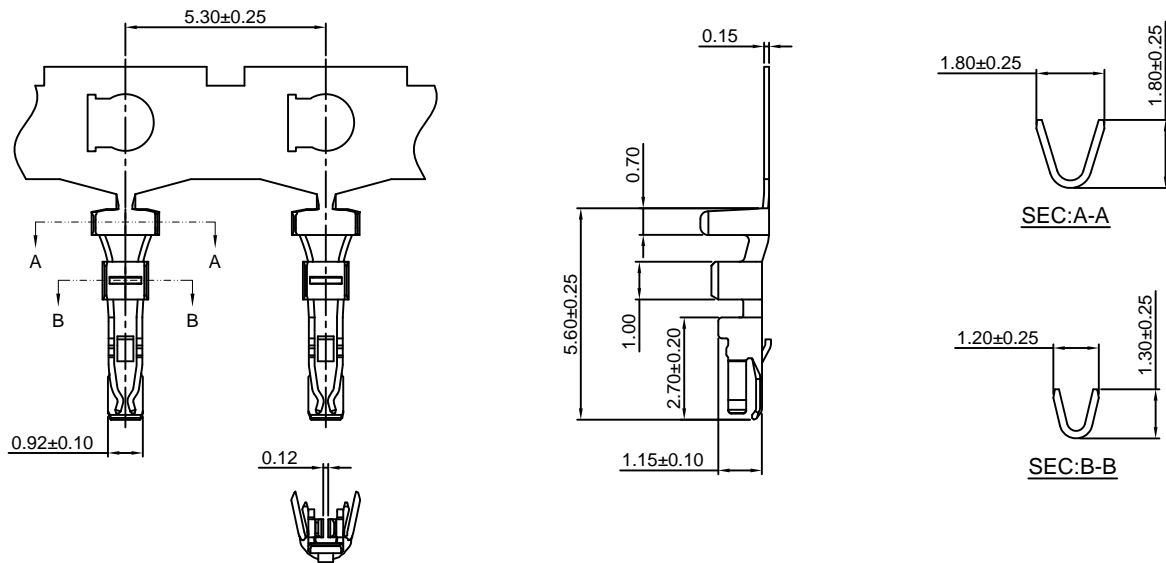
Optional Gold plating available but MOQ requested

A1501-T-B

1.50mm pitch Crimp Terminal

Reference Informations:

*Used in CJT A1501HB-XP series Housing



Ordering information & Specifications:

Unit:mm

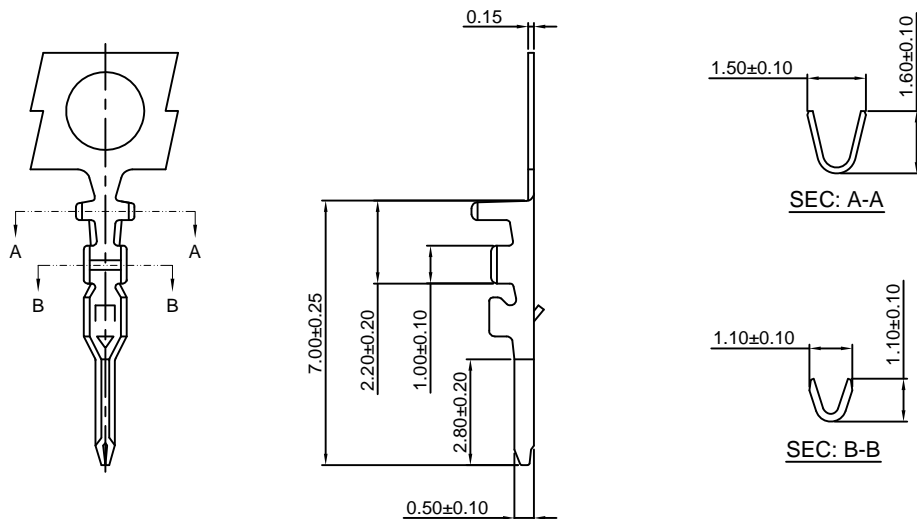
| Part NO. | Wire Range | Insulation O.D. | Material | Finish | Qty/reel |
|------------|------------|-----------------|-----------------|------------------|------------|
| A1501-GP-B | AWG#28-#32 | 1.10mm(max) | Phosphor Bronze | Gold over Nickel | 10,000 PCS |

A1501M-T

1.50mm pitch Crimp Terminal

Reference Informations:

*Used in CJT A1501HM-XP series Housing



Ordering information & Specifications:

Unit:mm

| Part NO. | Wire Range | Insulation O.D. | Material | Finish | Qty/reel |
|-----------|------------|-----------------|-----------------|------------------|------------|
| A1501M-TP | AWG#28-#32 | 0.90mm(max) | Phosphor Bronze | Tin over Nickel | 15,000 PCS |
| A1501M-GP | AWG#28-#32 | 0.90mm(max) | Phosphor Bronze | Gold over Nickel | 15,000 PCS |

Optional Gold plating available but MOQ requested

A1501H-XP

1.50mm pitch Housing

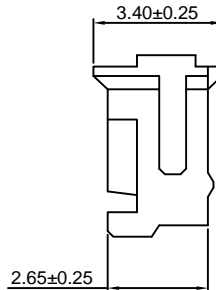
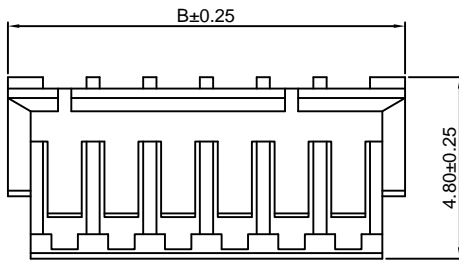
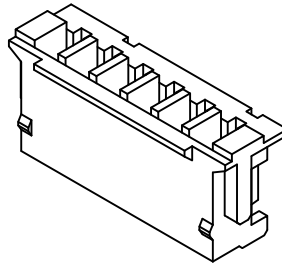
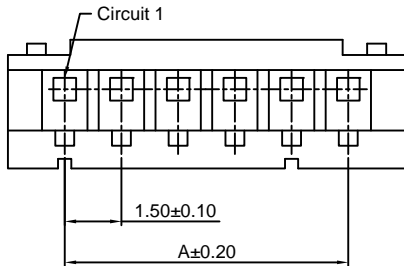
Reference Informations:

- *Material:Nylon 66,UL94V-0
- *Suitable CJT A1501-T(H) series Terminal
- *Mates with CJT A1501HM-XP series Housing and A1501WV,WR,WV-S,WR-S-XP series Wafer
- *Color:White

Ordering Information:

A1501H-XP - *** - ***
1 2 3

- 1.Part No.
- 2.Material:
(Blank):Nylon 66,UL94V-0
GWT:Nylon 66,UL94V-0 GWT 750 °C
- 3.Color:
(Blank):White
BK:Black GY:Gray
RD:Red LE:Light blue
BL:Blue LY:Lemon yellow
GN:Green DO:Dark orange



Ordering Information & Dimensions:

| PART NO. | Dimensions | |
|----------|------------|-------|
| | A | B |
| 2P | 1.50 | 4.50 |
| 3P | 3.00 | 6.00 |
| 4P | 4.50 | 7.50 |
| 5P | 6.00 | 9.00 |
| 6P | 7.50 | 10.50 |
| 7P | 9.00 | 12.00 |
| 8P | 10.50 | 13.50 |
| 9P | 12.00 | 15.00 |
| 10P | 13.50 | 16.50 |
| 11P | 15.00 | 18.00 |
| 12P | 16.50 | 19.50 |
| 13P | 18.00 | 21.00 |
| 15P | 21.00 | 24.00 |

Unit: mm

A1501HA-XP

1.50mm pitch Housing

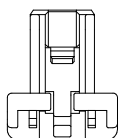
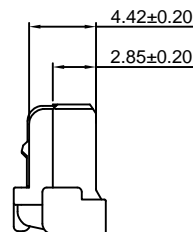
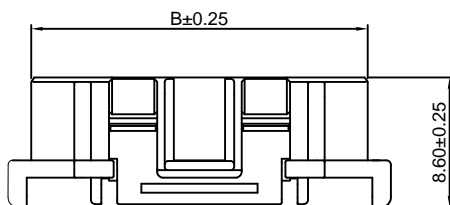
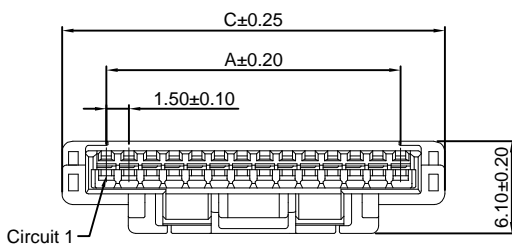
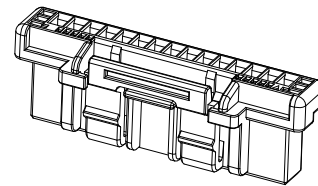
Reference Informations:

- *Material:PBT,UL94V-0
- *Suitable CJT A1501-T-A series Terminal
- *Mates with CJT A1501WVA-S,WRA-S-XP series Wafer
- *Color:Beige

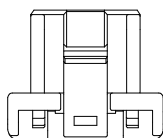
Ordering Information:

A1501HA-XP - ***
1 2

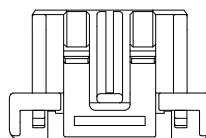
- 1.Part No.
- 2.Material:
(Blank):PBT,UL94V-0
GWT:PBT,UL94V-0 GWT 750 °C



2P,3P



4P,5P



6P~15P

Ordering Information & Dimensions:

| PART NO. | Dimensions | | |
|----------|------------|-------|-------|
| | A | B | C |
| 2P | 1.50 | 4.25 | 7.30 |
| 3P | 3.00 | 5.75 | 8.80 |
| 4P | 4.50 | 7.25 | 10.30 |
| 5P | 6.00 | 8.75 | 11.80 |
| 6P | 7.50 | 10.25 | 13.30 |
| 7P | 9.00 | 11.75 | 14.80 |
| 8P | 10.50 | 13.25 | 16.30 |
| 9P | 12.00 | 14.75 | 17.80 |
| 10P | 13.50 | 16.25 | 19.30 |
| 11P | 15.00 | 17.75 | 20.80 |
| 12P | 16.50 | 19.25 | 22.30 |
| 13P | 18.00 | 20.75 | 23.80 |
| 14P | 19.50 | 22.25 | 25.30 |
| 15P | 21.00 | 23.75 | 26.80 |

Unit: mm

A1501HB-XP

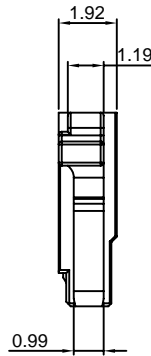
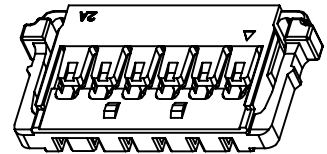
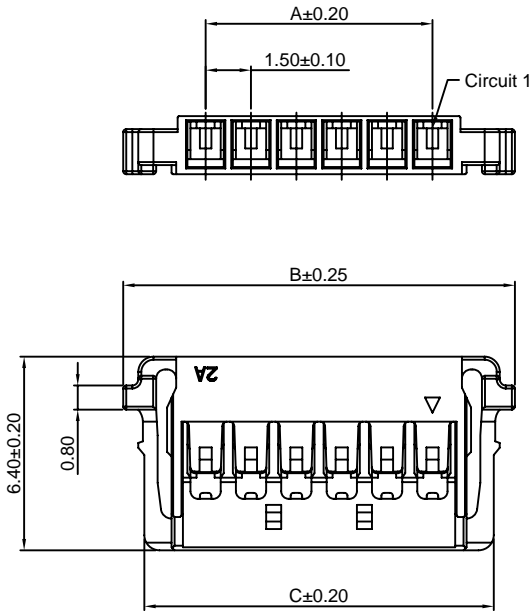
1.50mm pitch Housing

Reference Informations:

- *Material:Nylon 66,UL94V-0
- *Suitable CJT A1501-T-B series Terminal
- *Mates with CJT A1501WRB-S-XP series Wafer
- *Color:Black

Ordering Information:

- A1501HB-XP - ***
 1 2
- 1.Part No.
 - 2.Material:
 (Blank):Nylon 66,UL94V-0
 GWT:Nylon 66,UL94V-0 GWT 750 °C



Ordering Information & Dimensions:

| PART NO. | Dimensions | | |
|----------|------------|-------|-------|
| | A | B | C |
| 2P | 1.50 | 6.95 | 5.55 |
| 3P | 3.00 | 8.45 | 7.05 |
| 4P | 4.50 | 9.95 | 8.55 |
| 5P | 6.00 | 11.45 | 10.05 |
| 6P | 7.50 | 12.95 | 11.55 |
| 7P | 9.00 | 14.45 | 13.05 |
| 8P | 10.50 | 15.95 | 14.55 |
| 9P | 12.00 | 17.45 | 16.05 |
| 10P | 13.50 | 18.95 | 17.55 |
| 11P | 15.00 | 20.45 | 19.05 |
| 12P | 16.50 | 21.95 | 20.55 |

Unit: mm

A1501HM-XP

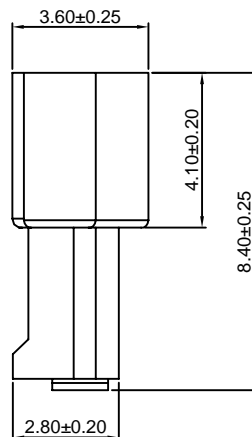
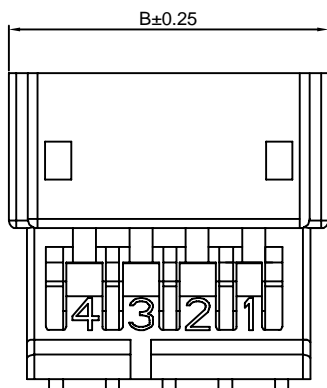
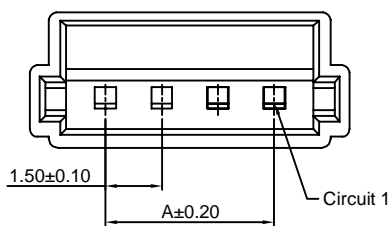
1.50mm pitch Housing

Reference Informations:

- *Material:Nylon 66,UL94V-0
- *Suitable CJT A1501M-T series Terminal
- *Mates with CJT A1501H-XP series Housing
- *Color:White

Ordering Information:

- A1501HM-XP - ***
 1 2
- 1.Part No.
 - 2.Material:
 (Blank):Nylon 66,UL94V-0
 GWT:Nylon 66,UL94V-0 GWT 750 °C



Ordering Information & Dimensions:

| PART NO. | Dimensions | |
|----------|------------|-------|
| | A | B |
| 2P | 1.50 | 5.55 |
| 3P | 3.00 | 7.05 |
| 4P | 4.50 | 8.55 |
| 5P | 6.00 | 10.05 |
| 6P | 7.50 | 11.55 |
| 7P | 9.00 | 13.05 |
| 8P | 10.50 | 14.55 |
| 9P | 12.00 | 16.05 |
| 10P | 13.50 | 17.55 |
| 11P | 15.00 | 19.05 |
| 12P | 16.50 | 20.55 |
| 13P | 18.00 | 22.05 |

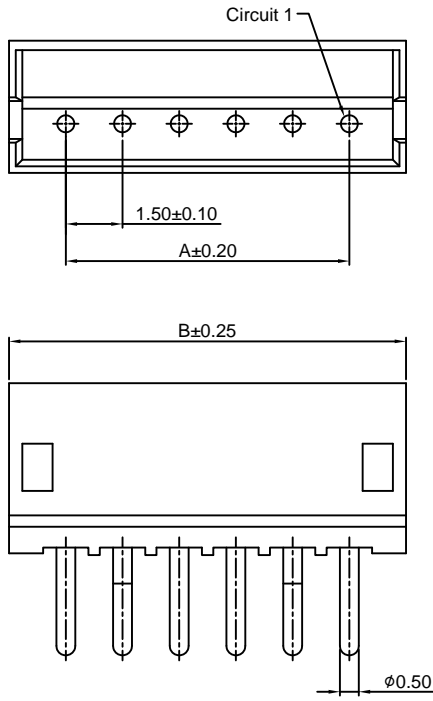
Unit: mm

A1501WV-XP

1.50mm pitch 180° Wafer

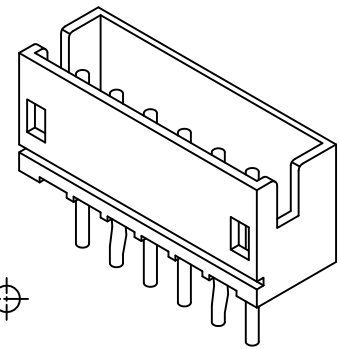
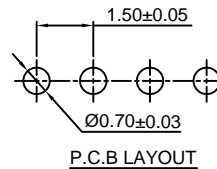
Reference Informations:

- *Material: Pin: Brass/Tin over Nickel
Insulator: Nylon 66, UL94V-0
- *Mates with CJT A1501H-XP series Housing
- *Color: Ivory



Ordering Information:

- A1501WV-XP - *** - ** - **
 $\frac{1}{2} \frac{3}{4}$
- Part No.
 - Material:
(Blank): Nylon 66, UL94V-0
GWT: Nylon 66, UL94V-0, GWT 750°C
 - Color:
(blank): Ivory
BK: Black
RD: Red
BL: Blue
GN: Green
YL: Yellow
 - Finish:
(Blank): Tin over Nickel
G: Gold over Nickel



Ordering Information & Dimensions:

| PART NO. | Dimensions | |
|----------|------------|-------|
| | A | B |
| 2P | 1.50 | 4.50 |
| 3P | 3.00 | 6.00 |
| 4P | 4.50 | 7.50 |
| 5P | 6.00 | 9.00 |
| 6P | 7.50 | 10.50 |
| 7P | 9.00 | 12.00 |
| 8P | 10.50 | 13.50 |
| 9P | 12.00 | 15.00 |
| 10P | 13.50 | 16.50 |
| 11P | 15.00 | 18.00 |
| 12P | 16.50 | 19.50 |
| 13P | 18.00 | 21.00 |
| 15P | 21.00 | 24.00 |

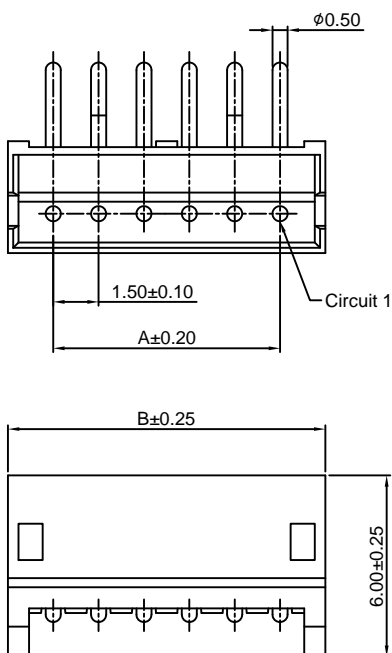
Unit: mm

A1501WR-XP

1.50mm pitch 90° Wafer

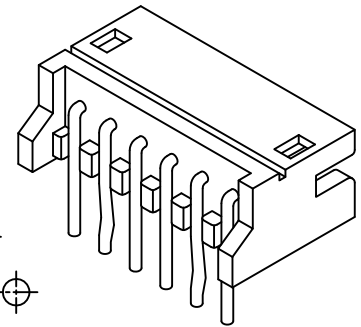
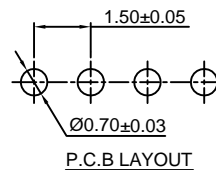
Reference Informations:

- *Material: Pin: Brass/Tin over Nickel
Insulator: Nylon 66, UL94V-0
- *Mates with CJT A1501H-XP series Housing
- *Color: Ivory



Ordering Information:

- A1501WR-XP - *** - ** - **
 $\frac{1}{2} \frac{3}{4}$
- Part No.
 - Material:
(Blank): Nylon 66, UL94V-0
GWT: Nylon 66, UL94V-0, GWT 750°C
 - Color:
(blank): Ivory
BK: Black
RD: Red
BL: Blue
GN: Green
YL: Yellow
 - Finish:
(Blank): Tin over Nickel
G: Gold over Nickel



Ordering Information & Dimensions:

| PART NO. | Dimensions | |
|----------|------------|-------|
| | A | B |
| 2P | 1.50 | 4.50 |
| 3P | 3.00 | 6.00 |
| 4P | 4.50 | 7.50 |
| 5P | 6.00 | 9.00 |
| 6P | 7.50 | 10.50 |
| 7P | 9.00 | 12.00 |
| 8P | 10.50 | 13.50 |
| 9P | 12.00 | 15.00 |
| 10P | 13.50 | 16.50 |
| 11P | 15.00 | 18.00 |
| 12P | 16.50 | 19.50 |
| 13P | 18.00 | 21.00 |
| 15P | 21.00 | 24.00 |

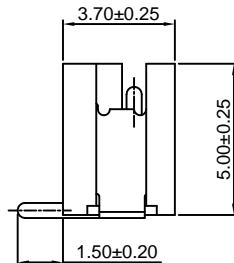
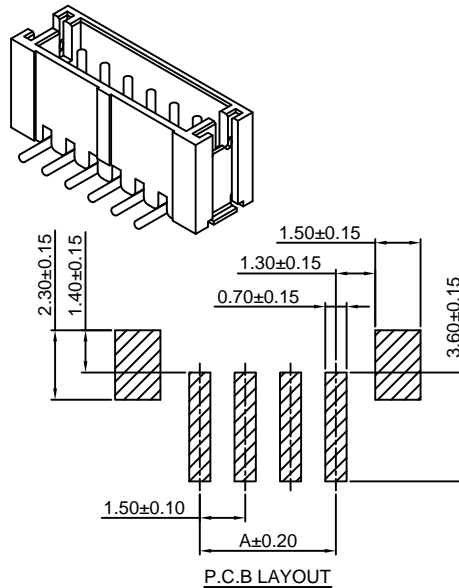
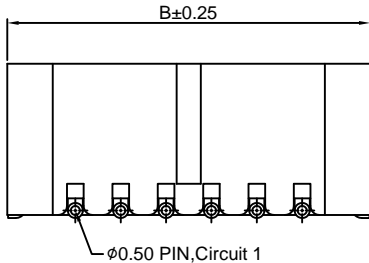
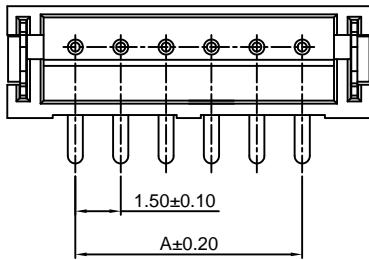
Unit: mm

A1501WV-S-XP

1.50mm pitch 180° Wafer-SMT TYPE

Reference Informations:

- *Material: Pin: Brass/Tin over Nickel
Solder Tabs: Brass/Gold over Nickel
Insulator: Nylon 6T, UL94V-0
Cap: Nylon 6T, UL94V-0
- *Mates with CJT A1501H-XP series Housing
- *Color: Ivory



Ordering Information:

A1501WV-S-XP - ^{***} - ^{**} - ^{**}
1 2 3 4

1. Part No.
2. Material:
(Blank): Nylon 6T, UL94V-0
GWT: Nylon 6T, UL94V-0, GWT 750 °C
3. Color:
(Blank): Ivory
BK: Black DH: Dark gray
RD: Red LE: Light blue
BL: Blue LY: Lemon yellow
GN: Green DO: Dark orange
4. Finish:
(Blank): Tin over Nickel
G: Gold over Nickel

Ordering Information & Dimensions:

| PART NO. | Dimensions | |
|----------|------------|-------|
| | A | B |
| 2P | 1.50 | 6.00 |
| 3P | 3.00 | 7.50 |
| 4P | 4.50 | 9.00 |
| 5P | 6.00 | 10.50 |
| 6P | 7.50 | 12.00 |
| 7P | 9.00 | 13.50 |
| 8P | 10.50 | 15.00 |
| 9P | 12.00 | 16.50 |
| 10P | 13.50 | 18.00 |
| 11P | 15.00 | 19.50 |
| 12P | 16.50 | 21.00 |
| 13P | 18.00 | 22.50 |

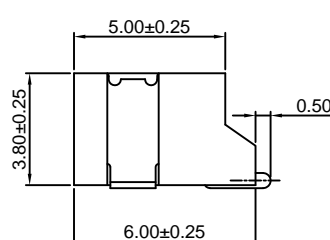
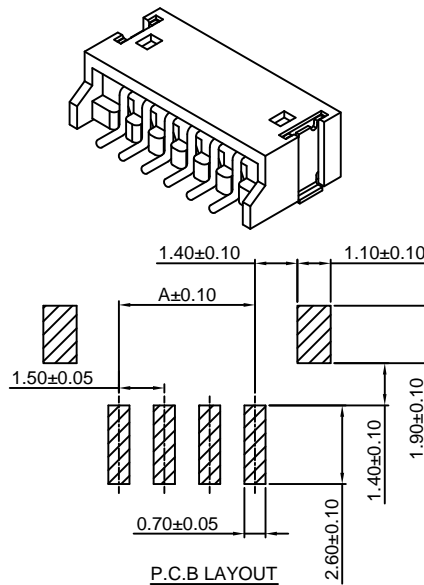
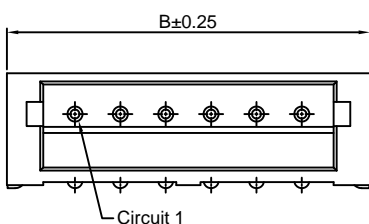
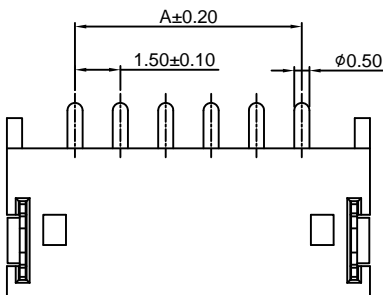
Unit: mm

A1501WR-S-XP

1.50mm pitch 90° Wafer-SMT TYPE

Reference Informations:

- *Material: Pin: Brass/Tin over Nickel
Solder Tabs: Brass/Gold over Nickel
Insulator: Nylon 6T, UL94V-0
- *Mates with CJT A1501H-XP series Housing
- *Color: Ivory



Ordering Information:

A1501WR-S-XP - ^{***} - ^{**} - ^{**}
1 2 3 4

1. Part No.
2. Material:
(Blank): Nylon 6T, UL94V-0
GWT: Nylon 6T, UL94V-0 GWT 750 °C
3. Color:
(Blank): Ivory
BK: Black DH: Dark gray
RD: Red LE: Light blue
BL: Blue LY: Lemon yellow
GN: Green DO: Dark orange
4. Finish:
(Blank): Tin over Nickel
G: Gold over Nickel

Ordering Information & Dimensions:

| PART NO. | Dimensions | |
|----------|------------|-------|
| | A | B |
| 2P | 1.50 | 6.00 |
| 3P | 3.00 | 7.50 |
| 4P | 4.50 | 9.00 |
| 5P | 6.00 | 10.50 |
| 6P | 7.50 | 12.00 |
| 7P | 9.00 | 13.50 |
| 8P | 10.50 | 15.00 |
| 9P | 12.00 | 16.50 |
| 10P | 13.50 | 18.00 |
| 11P | 15.00 | 19.50 |
| 12P | 16.50 | 21.00 |
| 13P | 18.00 | 22.50 |

Unit: mm

A1501WR-S-XP-A

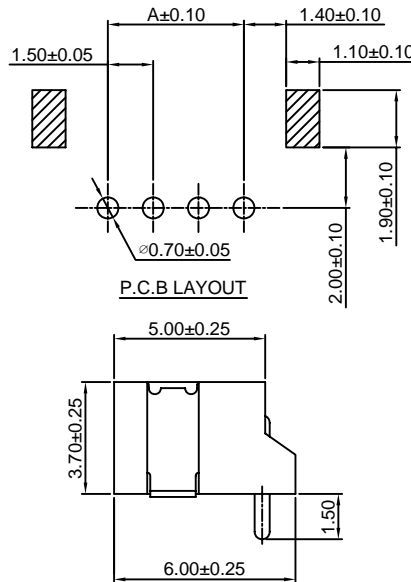
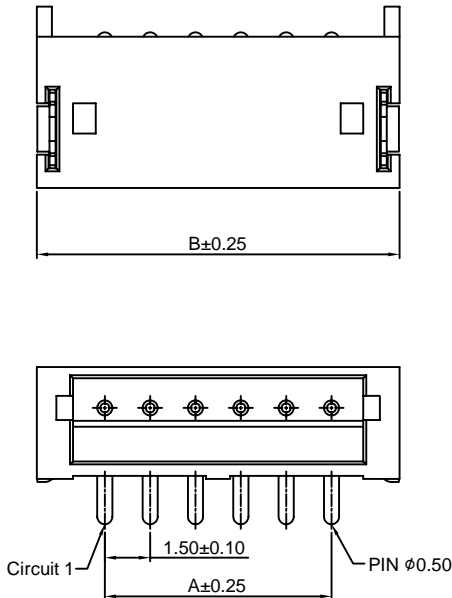
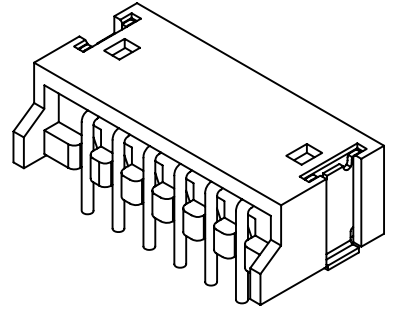
1.50mm pitch 90° Wafer DIP SMT TYPE

Reference Informations:

- *Material: Pin: Brass/Tin over Nickel
Solder Tabs: Brass/Gold over Nickel
Insulator: Nylon 6T, UL94V-0
- *Mates with CJT A1501H-XP series Housing
- *Color: Ivory

Ordering Information:
A1501WR-S-XP-A - *** - **
1 2 3

1. Part No.
2. Material:
(Blank): Nylon 6T, UL94V-0
GWT: Nylon 6T, UL94V-0 GWT 750 °C
3. Finish:
(Blank): Tin over Nickel
G: Gold over Nickel



Ordering Information & Dimensions:

| PART NO. | Dimensions | |
|----------|------------|-------|
| | A | B |
| 2P | 1.50 | 6.00 |
| 3P | 3.00 | 7.50 |
| 4P | 4.50 | 9.00 |
| 5P | 6.00 | 10.50 |
| 6P | 7.50 | 12.00 |
| 7P | 9.00 | 13.50 |
| 8P | 10.50 | 15.00 |
| 9P | 12.00 | 16.50 |
| 10P | 13.50 | 18.00 |
| 11P | 15.00 | 19.50 |
| 12P | 16.50 | 21.00 |
| 13P | 18.00 | 22.50 |

Unit: mm

A1501WVA-S-XP

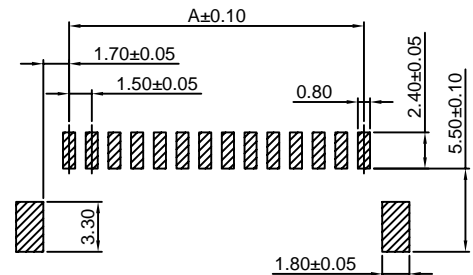
1.50mm pitch 180° Wafer-SMT TYPE

Reference Informations:

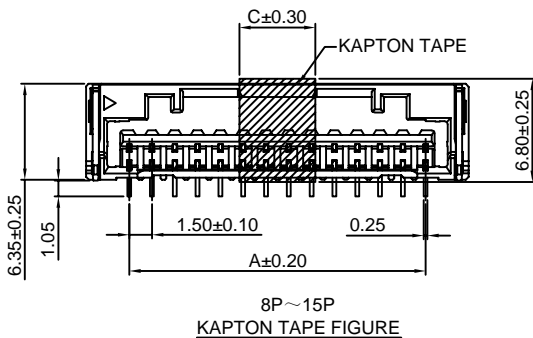
- *Material: Pin: Phosphor Bronze/Tin over Nickel
Solder Tabs: Brass/Tin over Nickel
Insulator: LCP, UL94V-0
- *Mates with CJT A1501HA-XP series Housing
- *Color: Ivory

Ordering Information:
A1501WVA-S-XP - *** - **
1 2 3

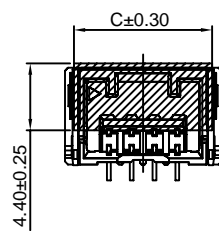
1. Part No.
2. Material:
(blank): LCP, UL94V-0
GWT: LCP, UL94V-0 GWT 750 °C
3. Finish:
(Blank): Tin over Nickel
G: Gold over Nickel



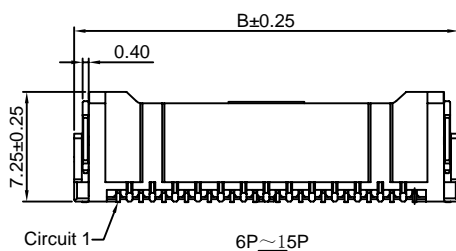
P.C.B LAYOUT



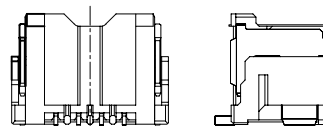
8P~15P
KAPTON TAPE FIGURE



2P~7P
KAPTON TAPE FIGURE



6P~15P



2P~5P

Ordering Information & Dimensions:

| PART NO. | Dimensions | | |
|----------|------------|-------|-------|
| | A | B | C |
| 2P | 1.50 | 7.30 | 6.10 |
| 3P | 3.00 | 8.80 | 7.60 |
| 4P | 4.50 | 10.30 | 9.10 |
| 5P | 6.00 | 11.80 | 10.60 |
| 6P | 7.50 | 13.30 | 12.10 |
| 7P | 9.00 | 14.80 | 13.60 |
| 8P | 10.50 | 16.30 | 5.00 |
| 9P | 12.00 | 17.80 | 5.00 |
| 10P | 13.50 | 19.30 | 5.00 |
| 11P | 15.00 | 20.80 | 5.00 |
| 12P | 16.50 | 22.30 | 5.00 |
| 13P | 18.00 | 23.80 | 5.00 |
| 14P | 19.50 | 25.30 | 5.00 |
| 15P | 21.00 | 26.80 | 5.00 |

Unit: mm

A1501WRA-S-XP

1.50mm pitch 90° Wafer-SMT TYPE

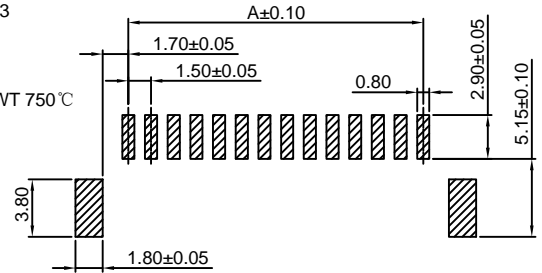
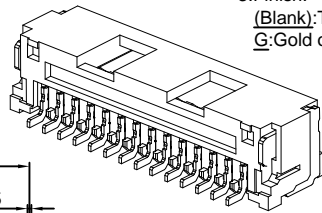
Reference Informations:

- *Material: Pin: Phosphor Bronze/Tin over Nickel
Solder Tabs: Brass/Tin over Nickel
Insulator: LCP, UL94V-0
- *Mates with CJT A1501HA-XP series Housing
- *Color: Ivory

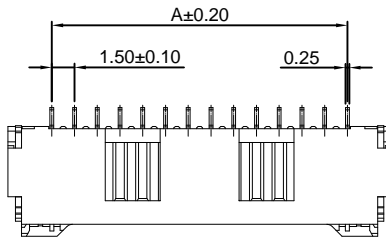
Ordering Information:

A1501WRA-S-XP - *** - **
1 2 3

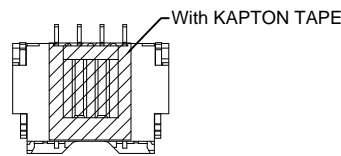
1. Part No.
2. Material:
(Blank): LCP, UL94V-0
GWT: LCP, UL94V-0 GWT 750°C
3. Finish:
(Blank): Tin over Nickel
G: Gold over Nickel



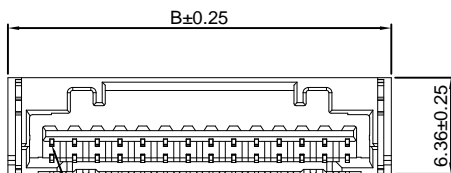
P.C.B LAYOUT



6P~15P



2P~5P



Circuit 1



Ordering Information & Dimensions:

| PART NO. | Dimensions | |
|----------|------------|-------|
| | A | B |
| 2P | 1.50 | 7.30 |
| 3P | 3.00 | 8.80 |
| 4P | 4.50 | 10.30 |
| 5P | 6.00 | 11.80 |
| 6P | 7.50 | 13.30 |
| 7P | 9.00 | 14.80 |
| 8P | 10.50 | 16.30 |
| 9P | 12.00 | 17.80 |
| 10P | 13.50 | 19.30 |
| 11P | 15.00 | 20.80 |
| 12P | 16.50 | 22.30 |
| 13P | 18.00 | 23.80 |
| 14P | 19.50 | 25.30 |
| 15P | 21.00 | 26.80 |

Unit: mm

A1501WRB-S-XP

1.50mm pitch 90° Wafer-SMT TYPE

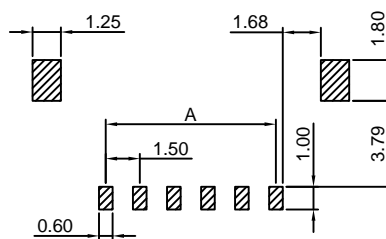
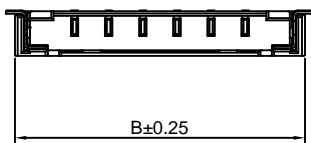
Reference Informations:

- *Material: Pin: Brass/Gold over Nickel
Insulator: Nylon 9T, UL94V-0
- *Mates with CJT A1501HB-XP series Housing
- *Color: Black

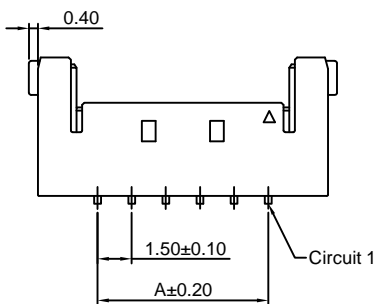
Ordering Information:

A1501WRB-S-XP - ***
1 2

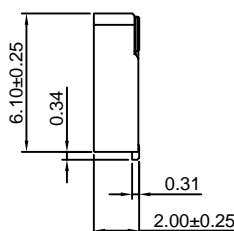
1. Part No.
2. Material:
(Blank): Nylon 9T, UL94V-0
GWT: Nylon 9T, UL94V-0, GWT 750°C



P.C.B LAYOUT



Circuit 1



Ordering Information & Dimensions:

| PART NO. | Dimensions | |
|----------|------------|-------|
| | A | B |
| 2P | 1.50 | 6.75 |
| 3P | 3.00 | 8.25 |
| 4P | 4.50 | 9.75 |
| 5P | 6.00 | 11.25 |
| 6P | 7.50 | 12.75 |
| 7P | 9.00 | 14.25 |
| 8P | 10.50 | 15.75 |
| 9P | 12.00 | 17.25 |
| 10P | 13.50 | 18.75 |
| 11P | 15.00 | 20.25 |
| 12P | 16.50 | 21.75 |

Unit: mm

A1501WVD-S-XP

1.50mm pitch 180° Wafer-SMT TYPE

Reference Informations:

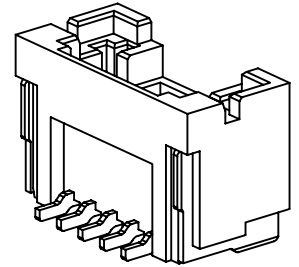
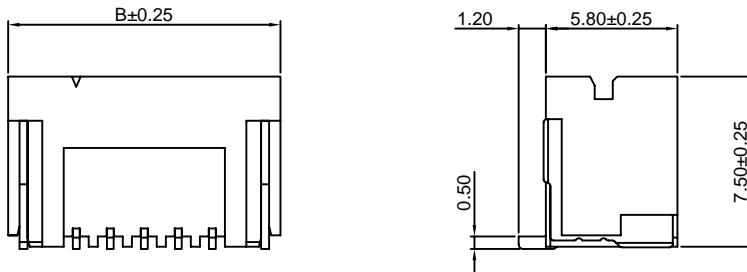
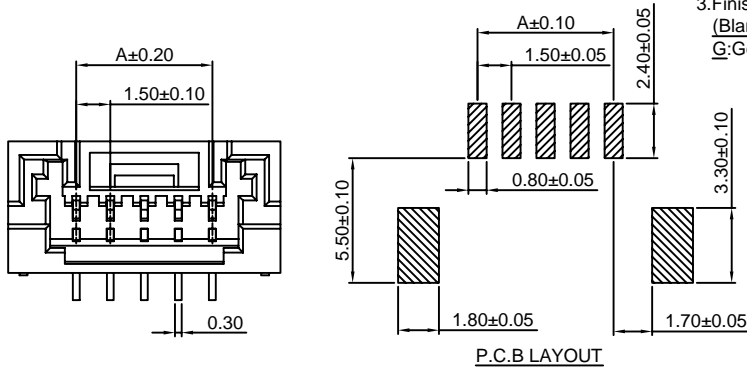
*Material:Pin:Phosphor Bronze/Tin over Nickel
Insulator:LCP,UL94V-0

*Color:Beige

Ordering Information:

A1501WVD-S-XP - *** - **
1 2 3

- 1.Part No.
- 2.Material:
(Blank):LCP,UL94V-0
GWT:LCP,UL94V-0 GWT 750 °C
- 3.Finish:
(Blank):Tin over Nickel
G:Gold over Nickel



Ordering Information & Dimensions:

| PART NO. | Dimensions | |
|----------|------------|-------|
| | A | B |
| 2P | 1.50 | 7.50 |
| 3P | 3.00 | 9.00 |
| 4P | 4.50 | 10.50 |
| 5P | 6.00 | 12.00 |
| 6P | 7.50 | 13.50 |
| 7P | 9.00 | 15.00 |
| 8P | 10.50 | 16.50 |
| 9P | 12.00 | 18.00 |
| 10P | 13.50 | 19.50 |
| 11P | 15.00 | 21.00 |
| 12P | 16.50 | 22.50 |
| 13P | 18.00 | 24.00 |
| 14P | 19.50 | 25.50 |
| 15P | 21.00 | 27.00 |
| 16P | 22.50 | 28.50 |

Unit: mm

A1501WRD-S-XP

1.50mm pitch 90° Wafer-SMT TYPE

Reference Informations:

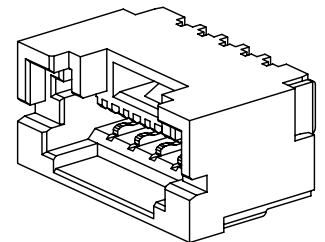
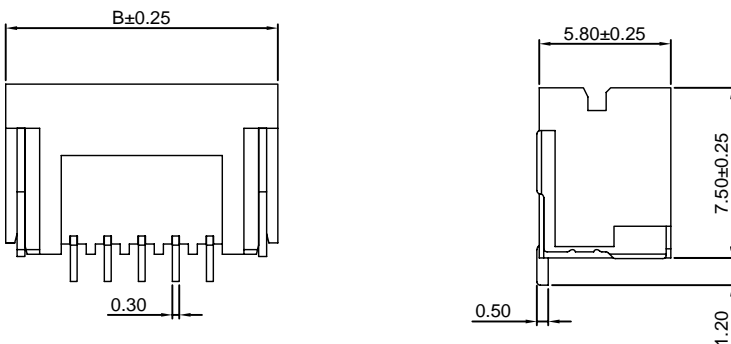
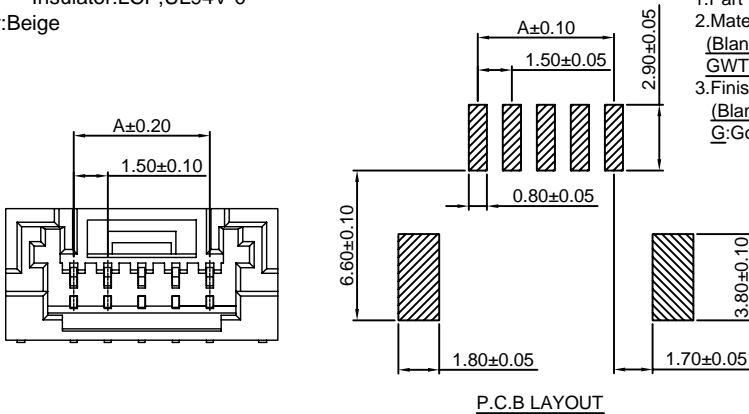
*Material:Pin:Phosphor Bronze/Tin over Nickel
Insulator:LCP,UL94V-0

*Color:Beige

Ordering Information:

A1501WRD-S-XP - *** - **
1 2 3

- 1.Part No.
- 2.Material:
(Blank):LCP,UL94V-0
GWT:LCP,UL94V-0 GWT 750 °C
- 3.Finish:
(Blank):Tin over Nickel
G:Gold over Nickel



Ordering Information & Dimensions:

| PART NO. | Dimensions | |
|----------|------------|-------|
| | A | B |
| 2P | 1.50 | 7.50 |
| 3P | 3.00 | 9.00 |
| 4P | 4.50 | 10.50 |
| 5P | 6.00 | 12.00 |
| 6P | 7.50 | 13.50 |
| 7P | 9.00 | 15.00 |
| 8P | 10.50 | 16.50 |
| 9P | 12.00 | 18.00 |
| 10P | 13.50 | 19.50 |
| 11P | 15.00 | 21.00 |
| 12P | 16.50 | 22.50 |
| 13P | 18.00 | 24.00 |
| 14P | 19.50 | 25.50 |
| 15P | 21.00 | 27.00 |
| 16P | 22.50 | 28.50 |

Unit: mm

X-ON Electronics

Largest Supplier of Electrical and Electronic Components

Click to view similar products for [Headers & Wire Housings](#) category:

Click to view products by [Changjiang](#) manufacturer:

Other Similar products are found below :

[57102-F02-18ULF](#) [58102-G61-06LF](#) [0009485154](#) [009176003701906](#) [0050291907](#) [00-9021-0611-00-339](#) [02.125.8002.8](#) [609-3404](#) [61062-3](#)
[622-0430](#) [622-3653LF](#) [63453-116](#) [636-1030](#) [636-1427](#) [636-3427](#) [636-4007](#) [641938-9](#) [644827-2](#) [65495-038](#) [65692-001LF](#) [65781-018](#)
[65781-047](#) [65817-010LF](#) [65817-015LF](#) [66207-023LF](#) [67016-026LF](#) [67095-007LF](#) [68631-112](#) [68645-018](#) [68648-049](#) [699319-000](#)
[70.362.1628.0](#) [70-4210](#) [70-4226B](#) [70-4853B](#) [707-5020](#) [707-5028](#) [71.350.2428.0](#) [71961-016LF](#) [733-134](#) [754199-000](#) [760-3052](#) [787-8014-00](#)
[FCN-367T-T012/H](#) [80.063.4001.1](#) [800-90-001-10-001000](#) [800-90-010-10-002000](#) [801-43-002-10-013000](#) [801-43-006-10-002000](#)
[803-41-018-10-001000](#)