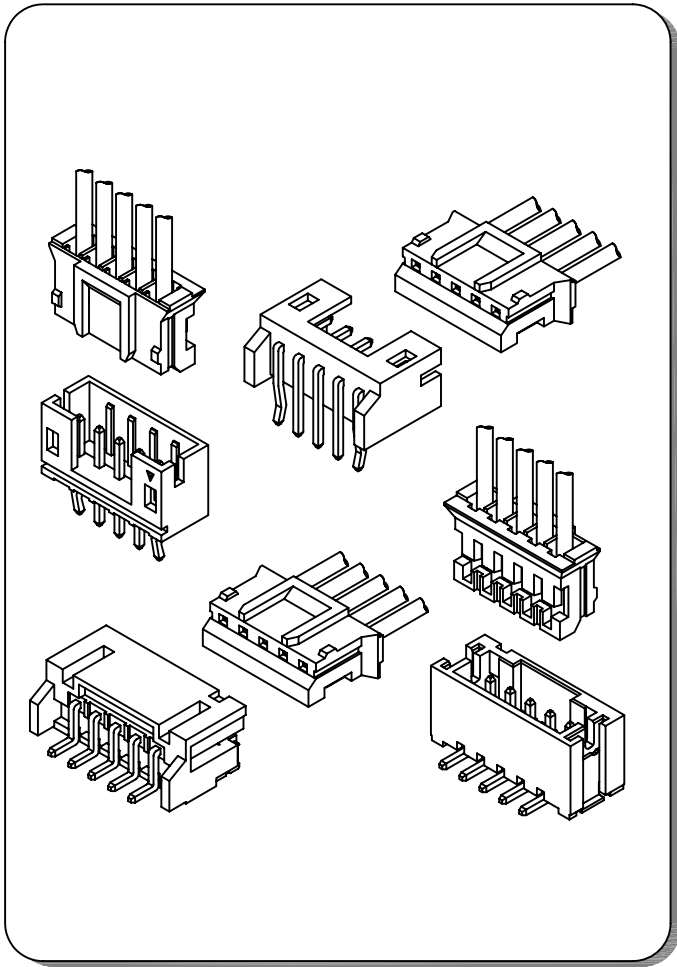


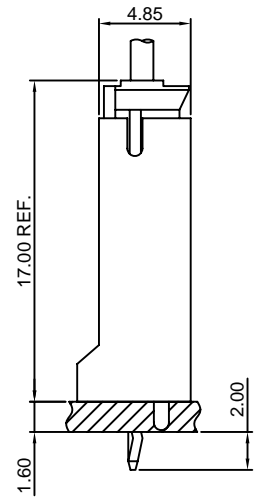
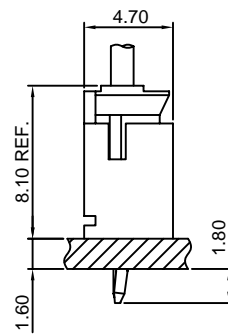
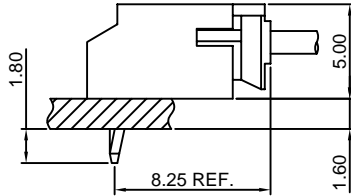
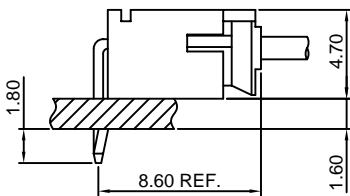
Specifications

- Current rating: 2A AC, DC
- Voltage rating: 100V AC, DC
- Temperature range: -40°C ~ +105°C
- Contact resistance: 10mΩ Max.
- Insulation resistance: 1000MΩ Min.
- Withstanding voltage: 800V AC/minute
- *Compliant with RoHS and REACH*
- *Meet the HF/Halogen Free, need to customize*
- *Contact CJT for details*

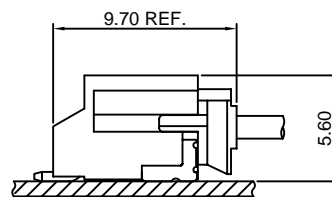
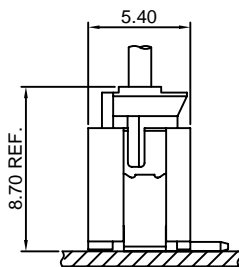
Standards



Assembly layout



DIP TYPE



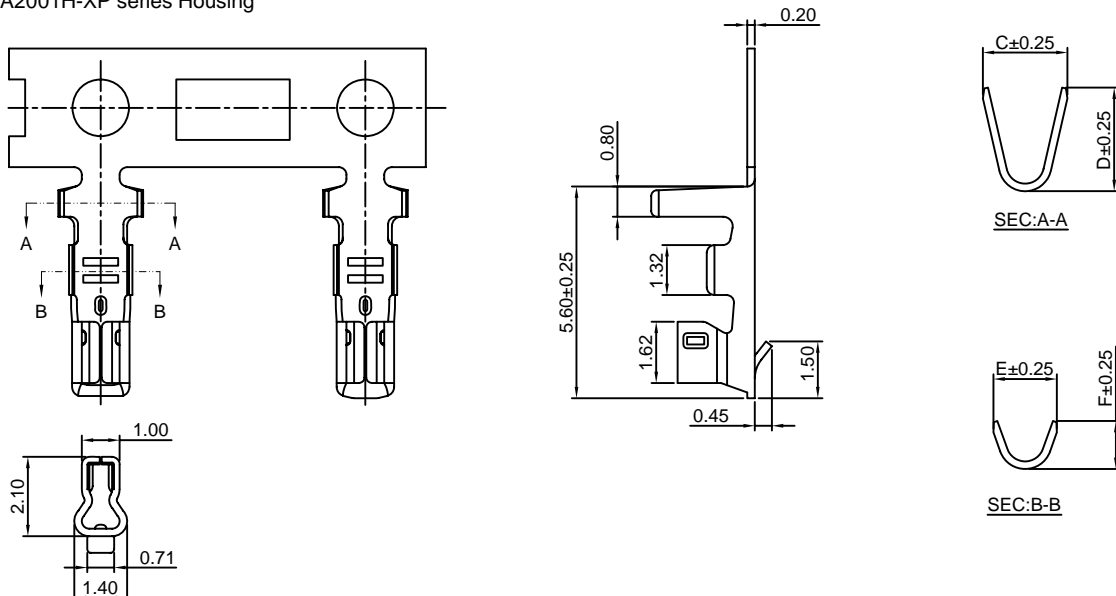
SMT TYPE

A2001-T

2.00mm pitch Crimp Terminal

Reference Informations:

*Used in CJT A2001H-XP series Housing



Ordering information & Specifications:

Unit:mm

| Part NO. | Wire Range | Insulation O.D. | Material | Finish | C | D | E | F | Qty/reel |
|------------|------------|-----------------|-----------------|------------------|------|------|------|------|------------|
| A2001-TP | AWG#24-#30 | 1.50mm(max) | Phosphor Bronze | Tin over Nickel | 2.20 | 2.50 | 1.70 | 1.40 | 10,000 PCS |
| A2001-GP | AWG#24-#30 | 1.50mm(max) | Phosphor Bronze | Gold over Nickel | 2.20 | 2.50 | 1.70 | 1.40 | 10,000 PCS |
| A2001-TP-L | AWG#28-#32 | 0.90mm(max) | Phosphor Bronze | Tin over Nickel | 1.55 | 2.10 | 1.15 | 1.15 | 15,000 PCS |
| A2001-GP-L | AWG#28-#32 | 0.90mm(max) | Phosphor Bronze | Gold over Nickel | 1.55 | 2.10 | 1.15 | 1.15 | 15,000 PCS |

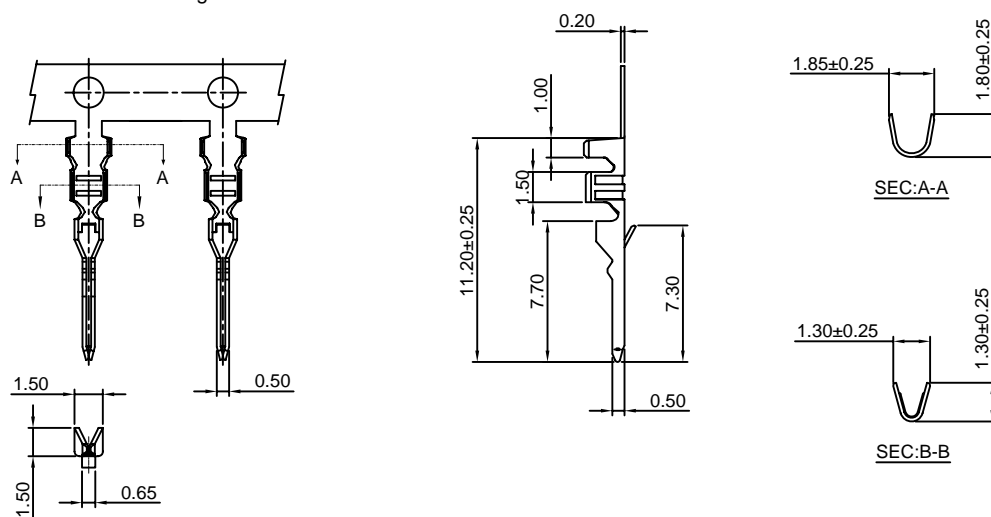
Optional Gold plating available but MOQ requested

A2001M-T

2.00mm pitch Crimp Terminal

Reference Informations:

*Used in CJT A2001HM-XP series Housing



Ordering information & Specifications:

Unit:mm

| Part NO | Wire Range | Insulation O.D. | Material | Finish | Qty/reel |
|-----------|------------|-----------------|-----------------|------------------|------------|
| A2001M-TP | AWG#24-#30 | 1.50mm(max) | Phosphor Bronze | Tin over Nickel | 10,000 PCS |
| A2001M-TB | AWG#24-#30 | 1.50mm(max) | Brass | Tin over Nickel | 10,000 PCS |
| A2001M-GP | AWG#24-#30 | 1.50mm(max) | Phosphor Bronze | Gold over Nickel | 10,000 PCS |
| A2001M-GB | AWG#24-#30 | 1.50mm(max) | Brass | Gold over Nickel | 10,000 PCS |

Optional Gold plating available but MOQ requested

A2001H-XP

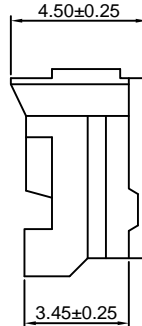
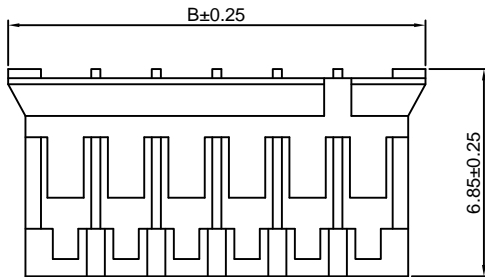
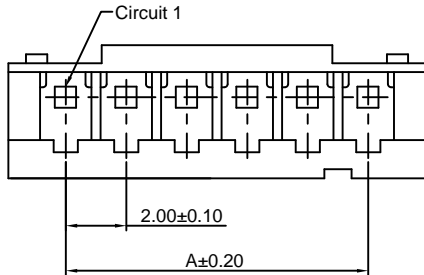
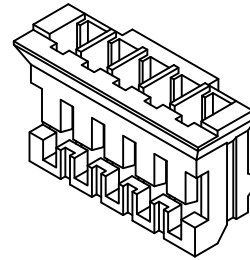
2.00mm pitch Housing

Reference Informations:

- *Material:Nylon 66,UL94V-0
- *Suitable CJT A2001-T(-L) series Terminal
- *Mates with CJT A2001HM-XP series Housing or A2001WV,WR-XP,A2001WV-S,WR-S-XP series Wafer
- *Color:White

Ordering Information:

- A2001H-XP - *** - **
 1 2 3
- Part No.
 - Material:
 (Blank):Nylon 66,UL94V-0
 GWT:Nylon 66,UL94V-0,GWT 750 °C
 - Color:
 (Blank):White
 RD:Red OR:Orange
 YL:Yellow GY:Gray
 BL:Blue PK:Pink
 BK:Black BR:Brown
 GN:Green VI:Violet
 TR:Tomato red LY:Lemon yellow
 LE:Light blue VY:Vivid yellow
 DPK:Dark pink



Ordering Information & Dimensions:

| PART NO. | Dimensions | |
|----------|------------|-------|
| | A | B |
| 2P | 2.00 | 5.80 |
| 3P | 4.00 | 7.80 |
| 4P | 6.00 | 9.80 |
| 5P | 8.00 | 11.80 |
| 6P | 10.00 | 13.80 |
| 7P | 12.00 | 15.80 |
| 8P | 14.00 | 17.80 |
| 9P | 16.00 | 19.80 |
| 10P | 18.00 | 21.80 |
| 11P | 20.00 | 23.80 |
| 12P | 22.00 | 25.80 |
| 13P | 24.00 | 27.80 |
| 14P | 26.00 | 29.80 |
| 15P | 28.00 | 31.80 |
| 16P | 30.00 | 33.80 |
| 17P | 32.00 | 35.80 |
| 18P | 34.00 | 37.80 |
| 19P | 36.00 | 39.80 |
| 20P | 38.00 | 41.80 |

Unit: mm

A2001HM-XP

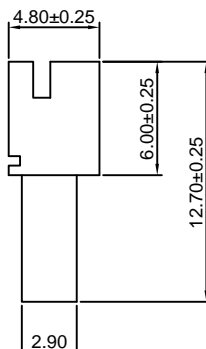
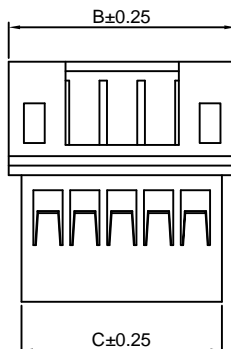
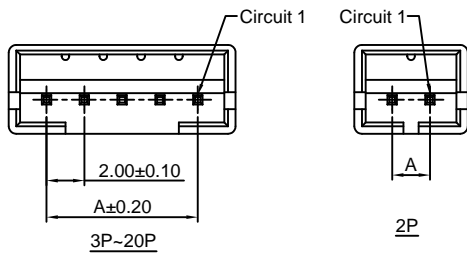
2.00mm pitch Housing

Reference Informations:

- *Material:Nylon 66,UL94V-0
- *Suitable CJT A2001M-T series Terminal
- *Mates with CJT A2001H-XP series Housing
- *Color:White

Ordering Information:

- A2001HM-XP - *** - **
 1 2 3
- Part No.
 - Material:
 (Blank):Nylon 66,UL94V-0
 GWT:Nylon 66,UL94V-0,GWT 750 °C
 - Color:
 (Blank):White
 RD:Red OR:Orange
 YL:Yellow GY:Gray
 BL:Blue PK:Pink
 BK:Black BR:Brown
 GN:Green VI:Violet



Ordering Information & Dimensions:

| PART NO. | Dimensions | | |
|----------|------------|-------|-------|
| | A | B | C |
| 2P | 2.00 | 6.00 | 4.60 |
| 3P | 4.00 | 8.00 | 6.60 |
| 4P | 6.00 | 10.00 | 8.60 |
| 5P | 8.00 | 12.00 | 10.60 |
| 6P | 10.00 | 14.00 | 12.60 |
| 7P | 12.00 | 16.00 | 14.60 |
| 8P | 14.00 | 18.00 | 16.60 |
| 9P | 16.00 | 20.00 | 18.60 |
| 10P | 18.00 | 22.00 | 20.60 |
| 11P | 20.00 | 24.00 | 22.60 |
| 12P | 22.00 | 26.00 | 24.60 |
| 13P | 24.00 | 28.00 | 26.60 |
| 14P | 26.00 | 30.00 | 28.60 |
| 15P | 28.00 | 32.00 | 30.60 |
| 16P | 30.00 | 34.00 | 32.60 |
| 17P | 32.00 | 36.00 | 34.60 |
| 18P | 34.00 | 38.00 | 36.60 |
| 19P | 36.00 | 40.00 | 38.60 |
| 20P | 38.00 | 42.00 | 40.60 |

Unit: mm

A2001WV-XP

2.00mm pitch 180° Wafer

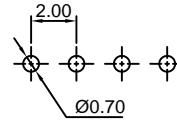
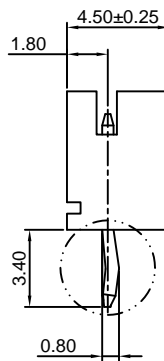
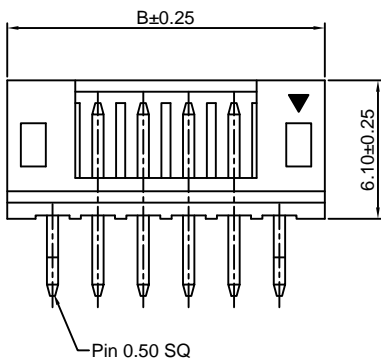
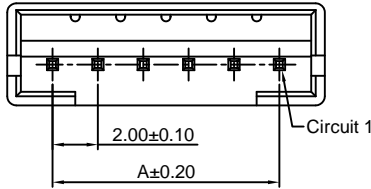
Reference Informations:

- *Material:Pin:Brass/Tin over Nickel
Insulator:Nylon 66,UL94V-0
- *Mates with CJT A2001H-XP series Housing
- *Color:White

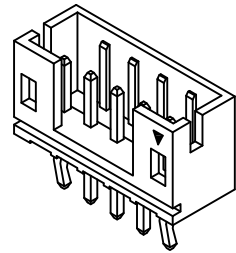
Ordering Information:

A2001WV-XP - * - * - * - * - *

- 1.Part No.
- 2.Style:
(blank) :Type 1
2 :Type 2
3 :Type 3
- 3.Material:
(Blank):Nylon 66,UL94V-0
GWT:Nylon 66,UL94V-0,GWT 750 °C
- 4.Color:
(Blank):White
RD:Red
YL:Yellow
BL:Blue
BK:Black
GN:Green
TR:Tomato red
LE:Light blue
(Blank):Tin over Nickel
G:Gold over Nickel
OR:Orange
GY:Gray
PK:Pink
BR:Brown
VI:Violet
LY:Lemon yellow
VY:Vivid yellow
- 5.Finish:
(Blank):Tin over Nickel
G:Gold over Nickel



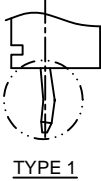
P.C.B LAYOUT



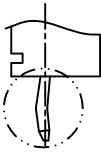
Ordering Information & Dimensions:

| PART NO. | Dimensions | |
|----------|------------|-------|
| | A | B |
| 2P | 2.00 | 6.00 |
| 3P | 4.00 | 8.00 |
| 4P | 6.00 | 10.00 |
| 5P | 8.00 | 12.00 |
| 6P | 10.00 | 14.00 |
| 7P | 12.00 | 16.00 |
| 8P | 14.00 | 18.00 |
| 9P | 16.00 | 20.00 |
| 10P | 18.00 | 22.00 |
| 11P | 20.00 | 24.00 |
| 12P | 22.00 | 26.00 |
| 13P | 24.00 | 28.00 |
| 14P | 26.00 | 30.00 |
| 15P | 28.00 | 32.00 |
| 16P | 30.00 | 34.00 |
| 17P | 32.00 | 36.00 |
| 18P | 34.00 | 38.00 |
| 19P | 36.00 | 40.00 |
| 20P | 38.00 | 42.00 |

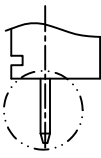
Unit: mm



TYPE 1



TYPE 2



TYPE 3

A2001WR-XP

2.00mm pitch 90° Wafer

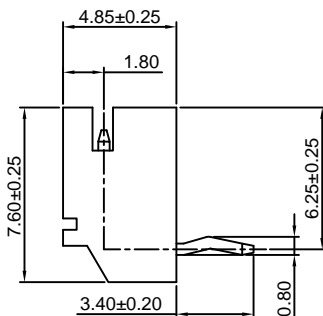
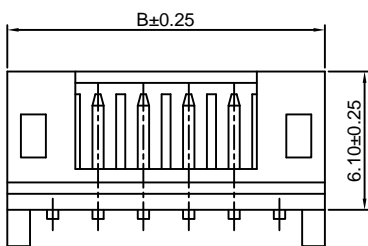
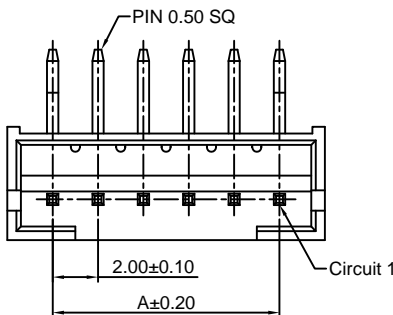
Reference Informations:

- *Material:Pin:Brass/Tin over Nickel
Insulator:Nylon 66,UL94V-0
- *Mates with CJT A2001H-XP series Housing
- *Color:White

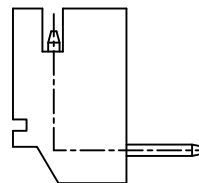
Ordering Information:

A2001WR-XP - * - * - * - * - *

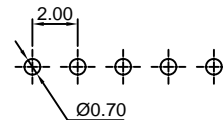
- 1.Part No.
- 2.Style:
(blank) :Type 1
2 :Type 2
- 3.Material:
(Blank):Nylon 66,UL94V-0
GWT:Nylon 66,UL94V-0,GWT 750 °C
- 4.Color:
(Blank):White
RD:Red
YL:Yellow
BL:Blue
BK:Black
GN:Green
TR:Tomato red
LE:Light blue
(Blank):Tin over Nickel
G:Gold over Nickel
OR:Orange
GY:Gray
PK:Pink
BR:Brown
VI:Violet
LY:Lemon yellow
VY:Vivid yellow
- 5.Finish:
(Blank):Tin over Nickel
G:Gold over Nickel



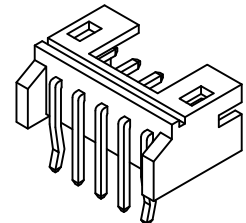
TYPE 1



TYPE 2



P.C.B LAYOUT



Ordering Information & Dimensions:

| PART NO. | Dimensions | |
|----------|------------|-------|
| | A | B |
| 2P | 2.00 | 6.00 |
| 3P | 4.00 | 8.00 |
| 4P | 6.00 | 10.00 |
| 5P | 8.00 | 12.00 |
| 6P | 10.00 | 14.00 |
| 7P | 12.00 | 16.00 |
| 8P | 14.00 | 18.00 |
| 9P | 16.00 | 20.00 |
| 10P | 18.00 | 22.00 |
| 11P | 20.00 | 24.00 |
| 12P | 22.00 | 26.00 |
| 13P | 24.00 | 28.00 |
| 14P | 26.00 | 30.00 |
| 15P | 28.00 | 32.00 |
| 16P | 30.00 | 34.00 |
| 17P | 32.00 | 36.00 |
| 18P | 34.00 | 38.00 |
| 19P | 36.00 | 40.00 |
| 20P | 38.00 | 42.00 |

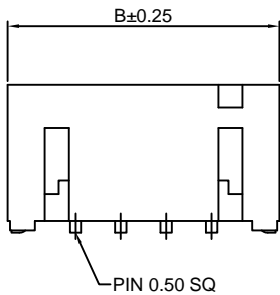
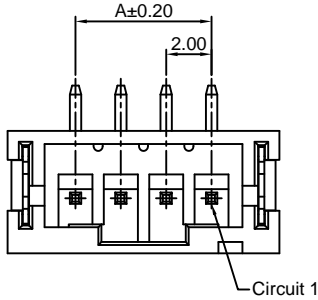
Unit: mm

A2001WV-S-XP

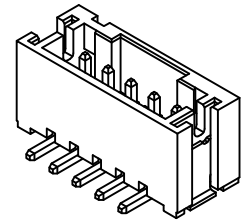
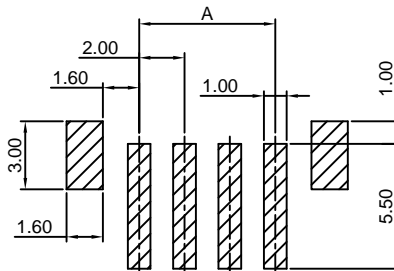
2.00mm pitch 180° Wafer-SMT TYPE

Reference Informations:

- *Material: Pin: Brass/Tin over Nickel
Insulator: Nylon 6T, UL94V-0
- *Mates with CJT A2001H-XP series Housing
- *Color: Ivory



- Ordering Information:
A2001WV-S-XP - *** - ** - **
1 2 3 4
1. Part No.
 2. Material:
(Blank): Nylon 6T, UL94V-0
GWT: Nylon 6T, UL94V-0, GWT 750 °C
 3. Color:
(Blank): Ivory
RD: Red BL: Blue
BK: Black GN: Green
LY: Lemon yellow DPK: Dark pink
 4. Finish:
(Blank): Tin over Nickel
G: Gold over Nickel



Ordering Information & Dimensions:

| PART NO. | Dimensions | |
|----------|------------|-------|
| | A | B |
| 2P | 2.00 | 8.00 |
| 3P | 4.00 | 10.00 |
| 4P | 6.00 | 12.00 |
| 5P | 8.00 | 14.00 |
| 6P | 10.00 | 16.00 |
| 7P | 12.00 | 18.00 |
| 8P | 14.00 | 20.00 |
| 9P | 16.00 | 22.00 |
| 10P | 18.00 | 24.00 |
| 11P | 20.00 | 26.00 |
| 12P | 22.00 | 28.00 |
| 13P | 24.00 | 30.00 |
| 14P | 26.00 | 32.00 |
| 15P | 28.00 | 34.00 |
| 16P | 30.00 | 36.00 |
| 17P | 32.00 | 38.00 |
| 18P | 34.00 | 40.00 |
| 19P | 36.00 | 42.00 |
| 20P | 38.00 | 44.00 |

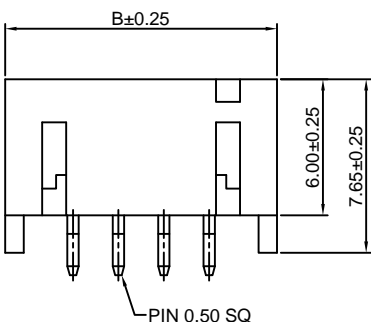
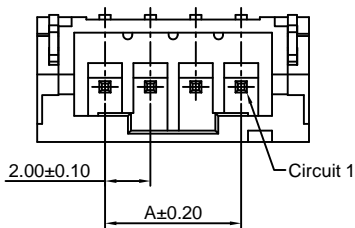
Unit: mm

A2001WR-S-XP

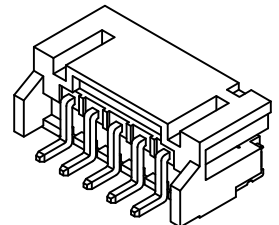
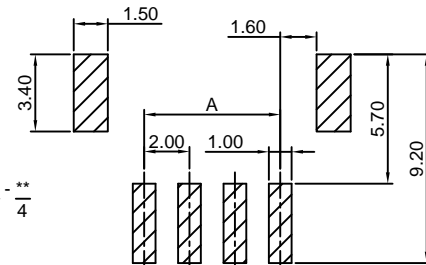
2.00mm pitch 90° Wafer-SMT TYPE

Reference Informations:

- *Material: Pin: Brass/Tin over Nickel
Insulator: Nylon 6T, UL94V-0
- *Mates with CJT A2001H-XP series Housing
- *Color: Ivory



- Ordering Information:
A2001WR-S-XP - *** - ** - **
1 2 3 4
1. Part No.
 2. Material:
(Blank): Nylon 6T, UL94V-0
GWT: Nylon 6T, UL94V-0, GWT 750 °C
 3. Color:
(Blank): Ivory
RD: Red BL: Blue
BK: Black GN: Green
LY: Lemon yellow DPK: Dark pink
 4. Finish:
(Blank): Tin over Nickel
G: Gold over Nickel



Ordering Information & Dimensions:

| PART NO. | Dimensions | |
|----------|------------|-------|
| | A | B |
| 2P | 2.00 | 8.00 |
| 3P | 4.00 | 10.00 |
| 4P | 6.00 | 12.00 |
| 5P | 8.00 | 14.00 |
| 6P | 10.00 | 16.00 |
| 7P | 12.00 | 18.00 |
| 8P | 14.00 | 20.00 |
| 9P | 16.00 | 22.00 |
| 10P | 18.00 | 24.00 |
| 11P | 20.00 | 26.00 |
| 12P | 22.00 | 28.00 |
| 13P | 24.00 | 30.00 |
| 14P | 26.00 | 32.00 |
| 15P | 28.00 | 34.00 |
| 16P | 30.00 | 36.00 |
| 17P | 32.00 | 38.00 |
| 18P | 34.00 | 40.00 |
| 19P | 36.00 | 42.00 |
| 20P | 38.00 | 44.00 |

Unit: mm

A2001WVR-XP

2.00mm pitch 90° Wafer

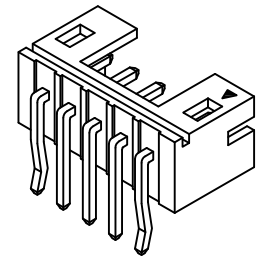
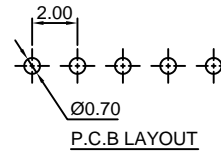
Reference Informations:

- *Material:Pin:Brass/Tin over Nickel
Insulator:Nylon 66,UL94V-0
- *Mates with CJT A2001H-XP series Housing
- *Color:White

Ordering Information:

A2001WVR-XP - * - ** - ** - **
1 2 3 4 5

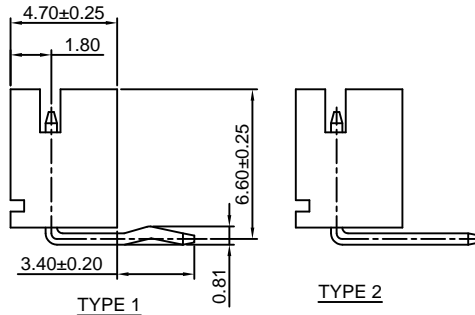
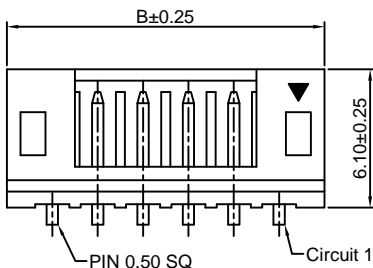
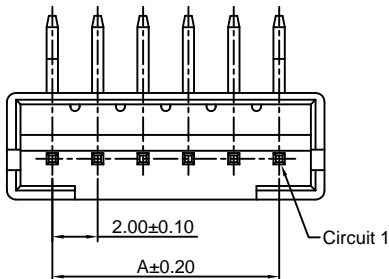
- 1.Part No.
- 2.Style:
(blank) :Type 1
2 :Type 2
- 3.Material:
(Blank):Nylon 66,UL94V-0
GWT:Nylon 66,UL94V-0,GWT 750°C
- 4.Color:
(Blank):White
RD:Red OR:Orange
YL:Yellow GY:Gray
BL:Blue BK:Black
BR:Brown
GN:Green VI:Violet
- 5.Finish:
(Blank):Tin over Nickel
G:Gold over Nickel



Ordering Inwite & Dimensions:

| PART NO. | Dimensions | |
|----------|------------|-------|
| | A | B |
| 2P | 2.00 | 6.00 |
| 3P | 4.00 | 8.00 |
| 4P | 6.00 | 10.00 |
| 5P | 8.00 | 12.00 |
| 6P | 10.00 | 14.00 |
| 7P | 12.00 | 16.00 |
| 8P | 14.00 | 18.00 |
| 9P | 16.00 | 20.00 |
| 10P | 18.00 | 22.00 |
| 11P | 20.00 | 24.00 |
| 12P | 22.00 | 26.00 |
| 13P | 24.00 | 28.00 |
| 14P | 26.00 | 30.00 |
| 15P | 28.00 | 32.00 |
| 16P | 30.00 | 34.00 |
| 17P | 32.00 | 36.00 |
| 18P | 34.00 | 38.00 |
| 19P | 36.00 | 40.00 |
| 20P | 38.00 | 42.00 |

Unit: mm



A2001WV-F-XP-H

2.00mm pitch 180° Wafer-High box type

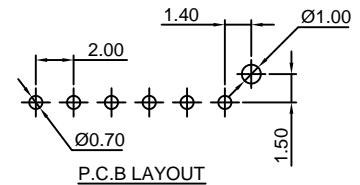
Reference Informations:

- *Material:Pin:Brass/Tin over Nickel
Insulator:Nylon 6T,UL94V-0
- *Mates with CJT A2001H-XP series Housing
- *Color:White

Ordering Information:

A2001WV-F-XP-H - *** - ** - **
1 2 3 4

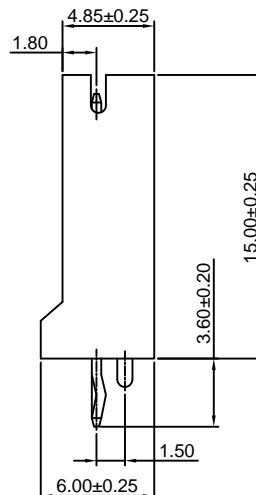
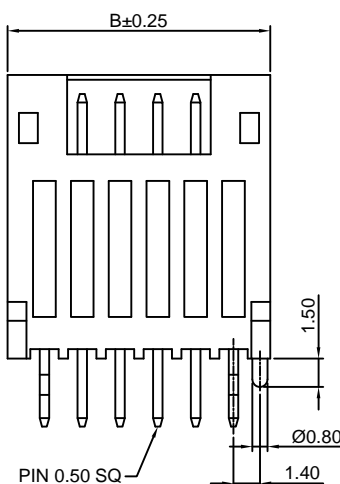
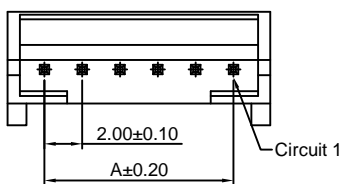
- 1.Part No.
- 2.Material:
(Blank):Nylon 6T,UL94V-0
GWT:Nylon 6T,UL94V-0,GWT 750°C
- 3.Color:
(Blank):White
RD:Red YL:Yellow
BL:Blue BK:Black
BR:Brown GN:Green
- 4.Finish:
(Blank):Tin over Nickel
G:Gold over Nickel



Ordering Information & Dimensions:

| PART NO. | Dimensions | |
|----------|------------|-------|
| | A | B |
| 2P | 2.00 | 6.00 |
| 3P | 4.00 | 8.00 |
| 4P | 6.00 | 10.00 |
| 5P | 8.00 | 12.00 |
| 6P | 10.00 | 14.00 |
| 7P | 12.00 | 16.00 |
| 8P | 14.00 | 18.00 |
| 9P | 16.00 | 20.00 |
| 10P | 18.00 | 22.00 |
| 11P | 20.00 | 24.00 |
| 12P | 22.00 | 26.00 |
| 13P | 24.00 | 28.00 |
| 14P | 26.00 | 30.00 |
| 15P | 28.00 | 32.00 |
| 16P | 30.00 | 34.00 |
| 17P | 32.00 | 36.00 |
| 18P | 34.00 | 38.00 |
| 19P | 36.00 | 40.00 |
| 20P | 38.00 | 42.00 |

Unit: mm



X-ON Electronics

Largest Supplier of Electrical and Electronic Components

Click to view similar products for [Headers & Wire Housings](#) category:

Click to view products by [Changjiang](#) manufacturer:

Other Similar products are found below :

[57102-F02-18ULF](#) [58102-G61-06LF](#) [0009485154](#) [009176003701906](#) [0050291907](#) [00-9021-0611-00-339](#) [02.125.8002.8](#) [609-3404](#) [61062-3](#)
[622-0430](#) [622-3653LF](#) [63453-116](#) [636-1030](#) [636-1427](#) [636-3427](#) [636-4007](#) [641938-9](#) [644827-2](#) [65495-038](#) [65692-001LF](#) [65781-018](#)
[65781-047](#) [65817-010LF](#) [65817-015LF](#) [66207-023LF](#) [67016-026LF](#) [67095-007LF](#) [68631-112](#) [68645-018](#) [68648-049](#) [699319-000](#)
[70.362.1628.0](#) [70-4210](#) [70-4226B](#) [70-4853B](#) [707-5020](#) [707-5028](#) [71.350.2428.0](#) [71961-016LF](#) [733-134](#) [754199-000](#) [760-3052](#) [787-8014-00](#)
[FCN-367T-T012/H](#) [80.063.4001.1](#) [800-90-001-10-001000](#) [800-90-010-10-002000](#) [801-43-002-10-013000](#) [801-43-006-10-002000](#)
[803-41-018-10-001000](#)