

P.C.B LAYOUT
TOLERANCE:±0.05

Ordering Information:

A2007WV-XP - *** - ***
1 2 3

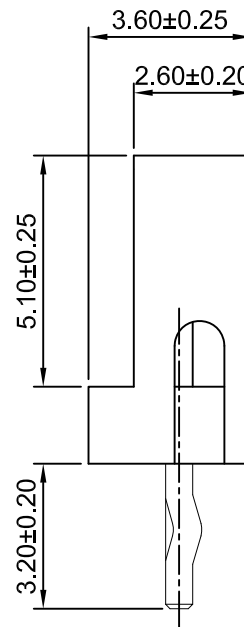
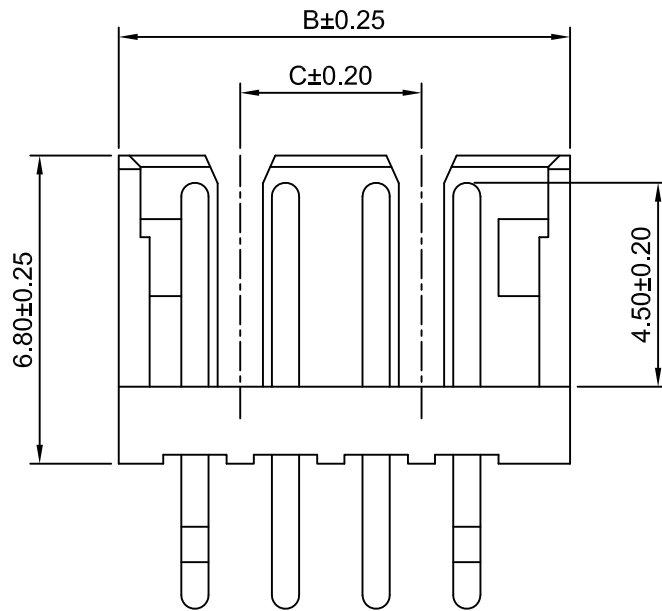
- Part NO.
- Color:
(blank): White
BK: Black
BL: Blue
- Finish:
(blank): Tin over Nickel
G: Gold over Nickel

SPECIFICATIONS:

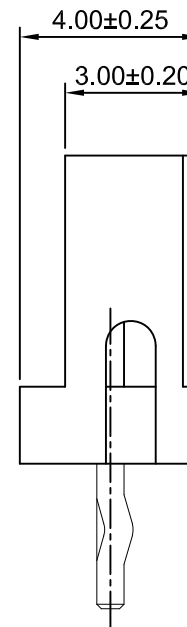
Current Rating: 1A AC,DC
Voltage Rating: 125V AC,DC
Temperature Range: -40°C ~ +105°C
Contact Resistance: 20mΩ Max.
Insulation Resistance: 100MΩ Min.
Withstanding Voltage: 500V AC/minute
Pin Material: Brass/Tin over Nickel
Material: Nylon 66,UL94V-0(White)

Ordering Information & Dimensions

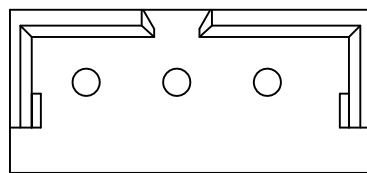
Part NO.	Dimensions(mm)		
	A	B	C
A2007WV-2P	2.00	5.96	—
A2007WV-3P	4.00	7.96	—
A2007WV-4P	6.00	9.96	4.00
A2007WV-5P	8.00	11.96	6.00
A2007WV-6P	10.00	13.96	8.00
A2007WV-7P	12.00	15.96	10.00
A2007WV-8P	14.00	17.96	12.00
A2007WV-9P	16.00	19.96	14.00
A2007WV-10P	18.00	21.96	16.00
A2007WV-11P	20.00	23.96	18.00
A2007WV-12P	22.00	25.96	20.00
A2007WV-13P	24.00	27.96	22.00
A2007WV-14P	26.00	29.96	24.00
A2007WV-15P	28.00	31.96	26.00



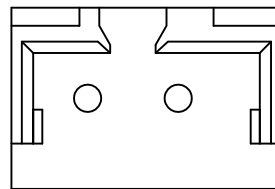
3P~15P



2P



3P



2P

REV	DESCRIPTION	DATE
A1	CHANGE THE DRAWING	2020.09.03
A0	NEW RELEASE	2005.05.10

CJTconn CHANGJIANG CONNECTORS CO.,LTD.

Unit	Scale	Sheet	TITLE
mm	6:1	1 of 1	2.00mm PITCH 180° WAFER
DRWN	CHK'D	APPR	
Dengchun Yi	Diankui Wan	Jack Yin	DRAWING NO. A2007WV-XP
General Tolerances			
x.xx±0.25 x.xxx±0.20 x.xxxx±0.15 ANGLES ±1°			REV A1

X-ON Electronics

Largest Supplier of Electrical and Electronic Components

Click to view similar products for [Headers & Wire Housings](#) category:

Click to view products by [Changjiang](#) manufacturer:

Other Similar products are found below :

[57102-F02-18ULF](#) [58102-G61-06LF](#) [0009485154](#) [009176003701906](#) [0050291907](#) [00-9021-0611-00-339](#) [02.125.8002.8](#) [609-3404](#) [61062-3](#)
[622-0430](#) [622-3653LF](#) [63453-116](#) [636-1030](#) [636-1427](#) [636-3427](#) [636-4007](#) [641938-9](#) [644827-2](#) [65495-038](#) [65692-001LF](#) [65781-018](#)
[65781-047](#) [65817-010LF](#) [65817-015LF](#) [66207-023LF](#) [67016-026LF](#) [67095-007LF](#) [68631-112](#) [68645-018](#) [68648-049](#) [699319-000](#)
[70.362.1628.0](#) [70-4210](#) [70-4226B](#) [70-4853B](#) [707-5020](#) [707-5028](#) [71.350.2428.0](#) [71961-016LF](#) [733-134](#) [754199-000](#) [760-3052](#) [787-8014-00](#)
[FCN-367T-T012/H](#) [80.063.4001.1](#) [800-90-001-10-001000](#) [800-90-010-10-002000](#) [801-43-002-10-013000](#) [801-43-006-10-002000](#)
[803-41-018-10-001000](#)