

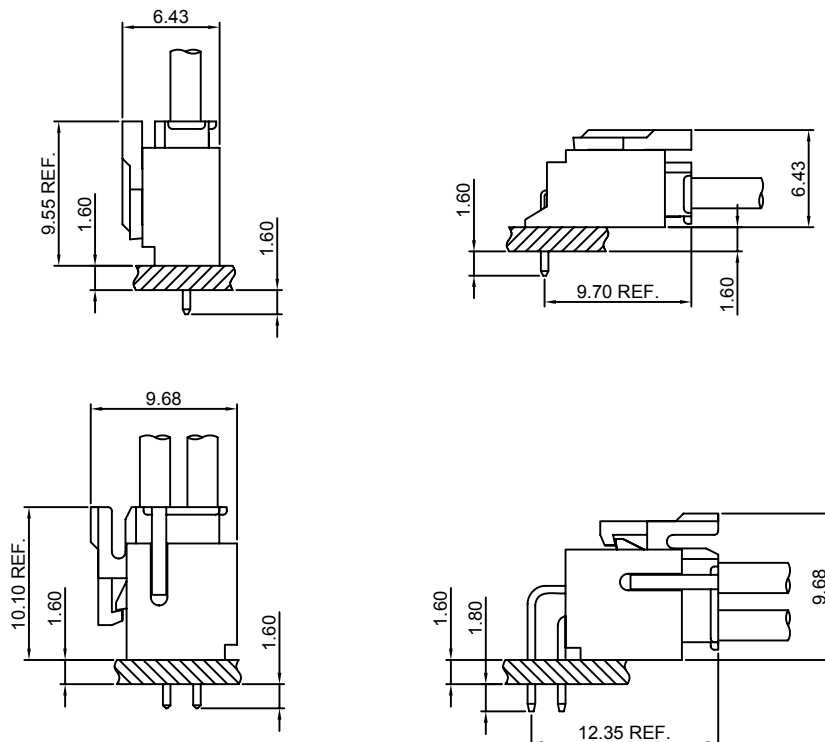
Specifications

- Current rating:3A AC,DC
- Voltage rating:250V AC,DC
- Temperature range:-40°C~+105°C
- Contact resistance:30mΩMax.
- Insulation resistance:1000MΩMin.
- Withstanding voltage:1000V AC/minute
- *Compliant with RoHS and REACH*
- *Meet the HF/Halogen Free,need to customize*
- *Contact CJT for details*

Standards



Assembly layout

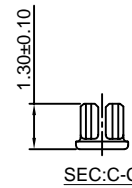
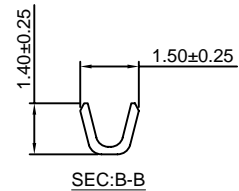
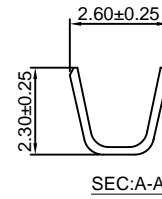
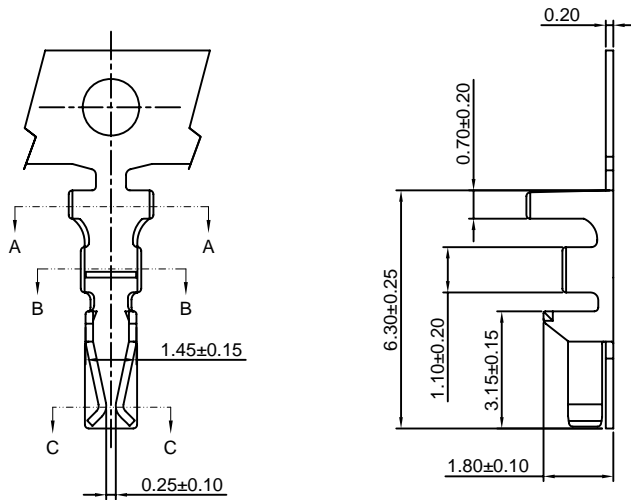


A2008-T

2.00mm pitch Crimp Terminal

Reference Informations:

*Used in CJT A2008H-XP, A2009H-2xXP series Housing



Ordering information & Specifications:

Unit:mm

| Part NO. | Wire Range | Insulation O.D. | Material | Finish | Qty/reel |
|----------|------------|-----------------|-----------------|------------------|------------|
| A2008-TP | AWG#22-#30 | 1.45mm(max) | Phosphor Bronze | Tin over Nickel | 10,000 PCS |
| A2008-GP | AWG#22-#30 | 1.45mm(max) | Phosphor Bronze | Gold over Nickel | 10,000 PCS |

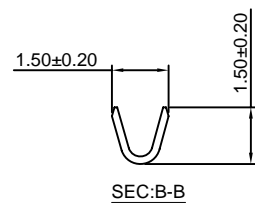
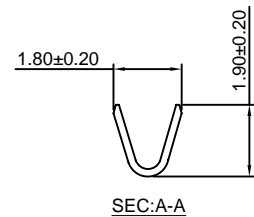
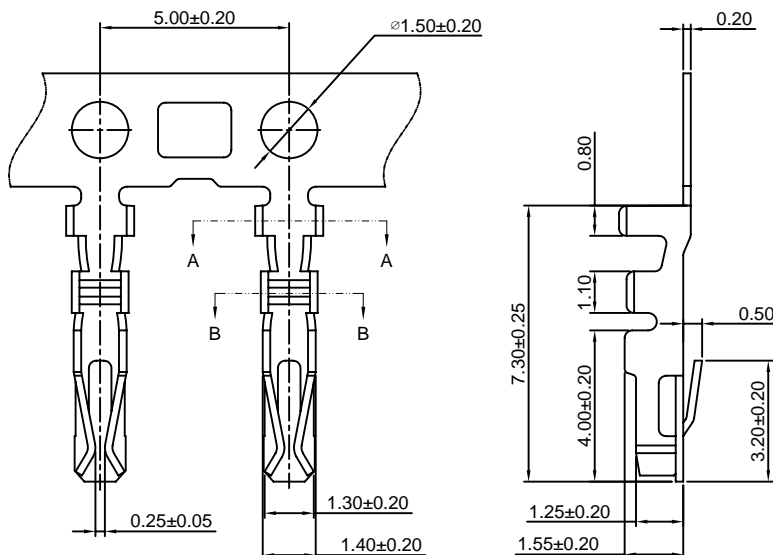
Optional Gold plating available but MOQ requested

A2008-T-A

2.00mm pitch Crimp Terminal

Reference Informations:

*Used in CJT A2008HB-XP, A2008H-2xXP series Housing



Ordering information & Specifications:

Unit:mm

| Part NO. | Wire Range | Insulation O.D. | Material | Finish | Qty/reel |
|------------|------------|-----------------|-----------------|------------------|------------|
| A2008-TP-A | AWG#22-#30 | 1.45mm(max) | Phosphor Bronze | Tin over Nickel | 10,000 PCS |
| A2008-GP-A | AWG#22-#30 | 1.45mm(max) | Phosphor Bronze | Gold over Nickel | 10,000 PCS |

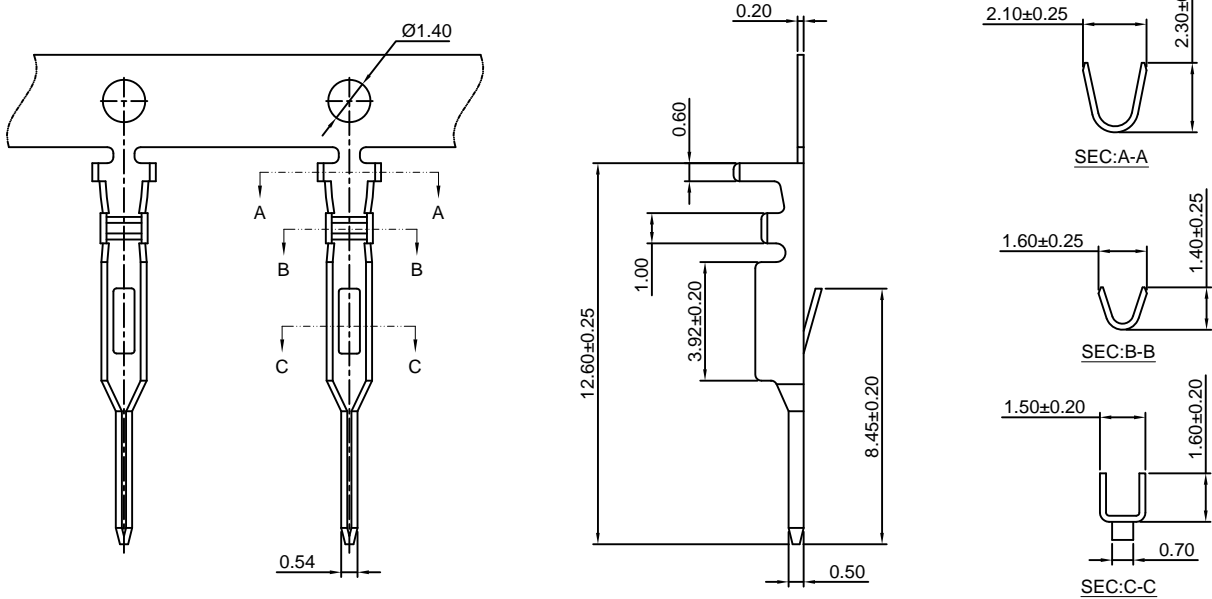
Optional Gold plating available but MOQ requested

A2008M-T

2.00mm pitch Crimp Terminal

Reference Informations:

*Used in CJT A2008HM, HMB-XP series Single Row Housing



Ordering information & Specifications:

Unit:mm

| Part NO. | Wire Range | Insulation O.D. | Material | Finish | Qty/reel |
|-----------|------------|-----------------|-----------------|------------------|------------|
| A2008M-TP | AWG#22-#28 | 1.50mm(max) | Phosphor Bronze | Tin over Nickel | 15,000 PCS |
| A2008M-GP | AWG#22-#28 | 1.50mm(max) | Phosphor Bronze | Gold over Nickel | 15,000 PCS |

Optional Gold plating available but MOQ requested

A2008H-XP

2.00mm pitch Housing

Reference Informations:

*Material:Nylon 66,UL94V-0

*Suitable CJT A2008-T series Terminal

*Mates with CJT A2008HM, HMB-XP series Single Row Housing or A2008WV, WR, WV-S, WR-S-XP series Single Row Wafer

*Color:White

Ordering Information:

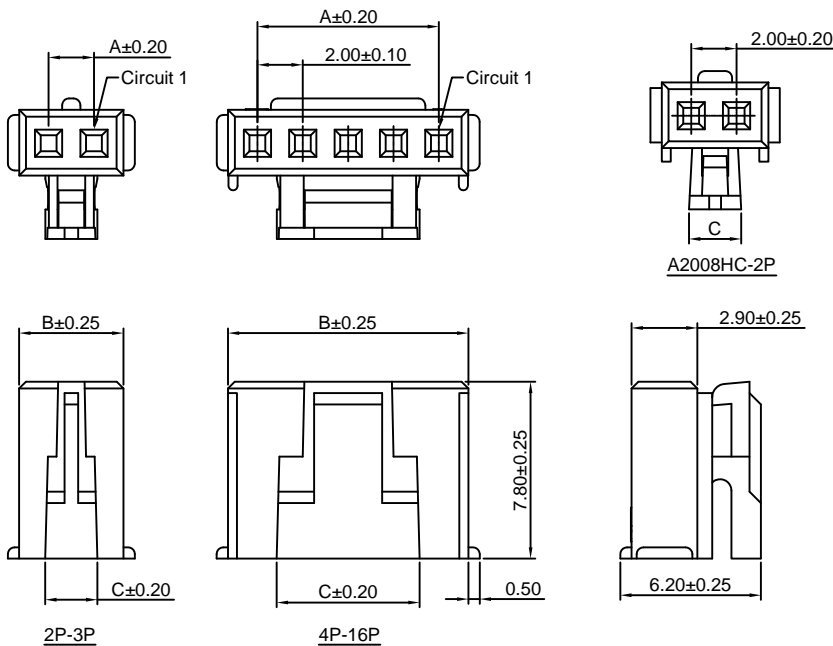
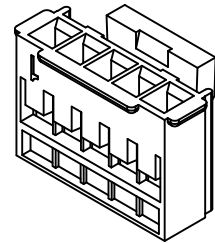
A2008H-XP - ***
1 2

1.Part No.

2.Material:

(Blank):Nylon 66,UL94V-0

GWT:Nylon 66,UL94V-0,GWT 750 °C



Ordering Information & Dimensions:

| PART NO. | Dimensions | | |
|----------|------------|-------|-------|
| | A | B | C |
| 2P | 2.00 | 4.70 | 2.30 |
| 3P | 4.00 | 6.70 | 2.30 |
| 4P | 6.00 | 8.70 | 4.30 |
| 5P | 8.00 | 10.70 | 6.30 |
| 6P | 10.00 | 12.70 | 6.30 |
| 7P | 12.00 | 14.70 | 6.30 |
| 8P | 14.00 | 16.70 | 6.30 |
| 9P | 16.00 | 18.70 | 6.30 |
| 10P | 18.00 | 20.70 | 14.30 |
| 11P | 20.00 | 22.70 | 14.30 |
| 12P | 22.00 | 24.70 | 14.30 |
| 13P | 24.00 | 26.70 | 14.30 |
| 14P | 26.00 | 28.70 | 14.30 |
| 15P | 28.00 | 30.70 | 14.30 |
| 16P | 30.00 | 32.70 | 14.30 |

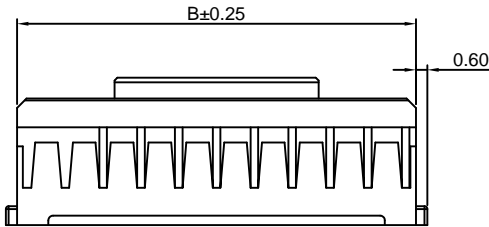
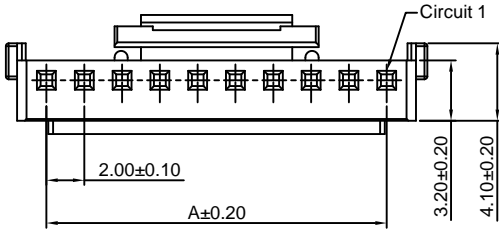
Unit: mm

A2008HA-XP

2.00mm pitch Housing

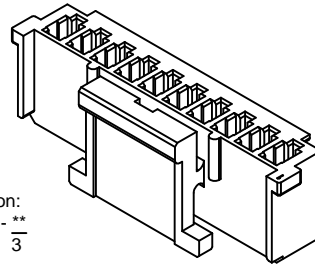
Reference Informations:

- *Material: Nylon 66, UL94V-0
- *Suitable CJT A2010-T series Terminal
- *Mates with CJT A2008WVA, WRA-XP series Wafer
- *Color: Ivory



Ordering Information:
A2008HA-XP - *** - **
1 2 3

- Part No.
- Material:
(Blank): Nylon 66, UL94V-0
GWT: Nylon 66, UL94V-0, GWT 750 °C
- Color:
(Blank): White
BK: Black
RD: Red
YL: Yellow
BL: Blue
GN: Green
GY: Gray



Ordering Information & Dimensions:

| PART NO. | Dimensions | |
|----------|------------|-------|
| | A | B |
| 4P | 6.00 | 9.10 |
| 5P | 8.00 | 11.10 |
| 6P | 10.00 | 13.10 |
| 7P | 12.00 | 15.10 |
| 8P | 14.00 | 17.10 |
| 9P | 16.00 | 19.10 |
| 10P | 18.00 | 21.10 |
| 11P | 20.00 | 23.10 |
| 12P | 22.00 | 25.10 |
| 13P | 24.00 | 27.10 |
| 14P | 26.00 | 29.10 |
| 15P | 28.00 | 31.10 |
| 16P | 30.00 | 33.10 |
| 17P | 32.00 | 35.10 |
| 18P | 34.00 | 37.10 |
| 19P | 36.00 | 39.10 |
| 20P | 38.00 | 41.10 |

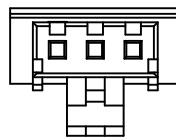
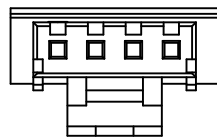
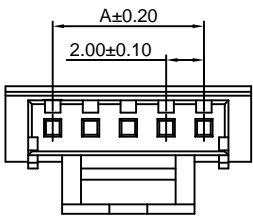
Unit: mm

A2008HB-XP

2.00mm pitch Housing

Reference Informations:

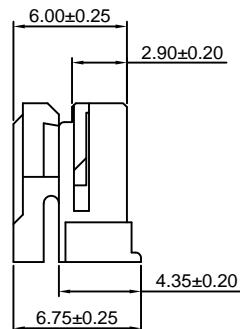
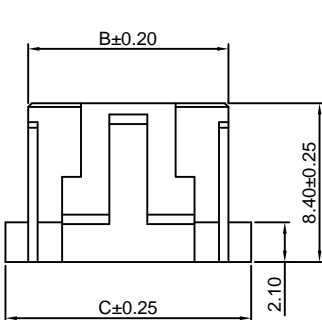
- *Material: Nylon 66, UL94V-0
- *Suitable CJT A2008-T-A series Terminal
- *Mates with CJT A2008WV, WR, WV-S, WR-S-XP series Single Row Wafer or A2008HM, HMB-XP series Single Row Housing or A2008S-XP series Seal
- *Color: White



5P~16P

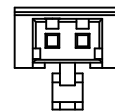
4P

2P~3P

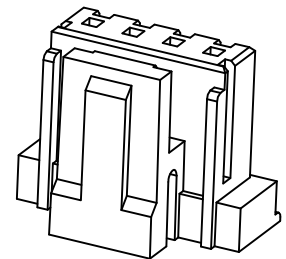


Ordering Information:
A2008HB-XP - *** - **
1 2 3

- Part No.
- Material:
(Blank): Nylon 66, UL94V-0
GWT: Nylon 66, UL94V-0, GWT 750 °C
- Color:
(Blank): White
BK: Black
RD: Red
YL: Yellow
BL: Blue
GN: Green
GY: Gray



A2008HD-2P



Ordering Information & Dimensions:

| PART NO. | Dimensions | | |
|----------|------------|-------|-------|
| | A | B | C |
| 2P | 2.00 | 7.00 | 4.60 |
| 3P | 4.00 | 9.00 | 6.60 |
| 4P | 6.00 | 11.00 | 8.60 |
| 5P | 8.00 | 13.00 | 10.60 |
| 6P | 10.00 | 15.00 | 12.60 |
| 7P | 12.00 | 17.00 | 14.60 |
| 8P | 14.00 | 19.00 | 16.60 |
| 9P | 16.00 | 21.00 | 18.60 |
| 10P | 18.00 | 23.00 | 20.60 |
| 11P | 20.00 | 25.00 | 22.60 |
| 12P | 22.00 | 27.00 | 24.60 |
| 13P | 24.00 | 29.00 | 26.60 |
| 14P | 26.00 | 31.00 | 28.60 |
| 15P | 28.00 | 33.00 | 30.60 |

Unit: mm

A2008HM-XP

2.00mm pitch Housing

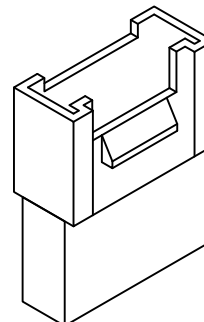
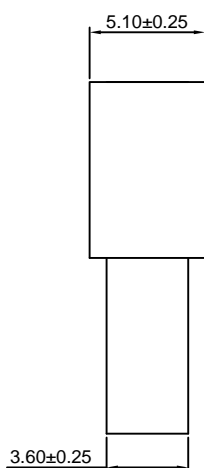
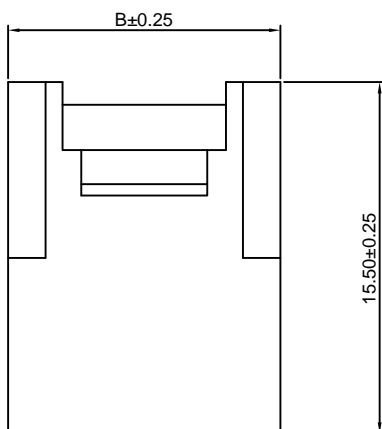
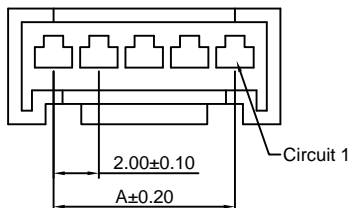
Reference Informations:

- *Material:Nylon 66,UL94V-0
- *Suitable CJT A2008M-T series Terminal
- *Mates with CJT A2008H,HB-XP series Single Row Housing
- *Color:White

Ordering Information:

A2008HM-XP - *** - **
 1 2 3

- 1.Part No.
- 2.Material:
 (Blank):Nylon 66,UL94V-0
 GWT:Nylon 66,UL94V-0,GWT 750 °C
- 3.Color:
 (Blank):White
 BK:Black
 RD:Red
 YL:Yellow
 BL:Blue
 GN:Green
 GY:Gray



Ordering Information & Dimensions:

| PART NO. | Dimensions | |
|----------|------------|-------|
| | A | B |
| 2P | 2.00 | 6.00 |
| 3P | 4.00 | 8.00 |
| 4P | 6.00 | 10.00 |
| 5P | 8.00 | 12.00 |
| 6P | 10.00 | 14.00 |
| 7P | 12.00 | 16.00 |
| 8P | 14.00 | 18.00 |
| 9P | 16.00 | 20.00 |
| 10P | 18.00 | 22.00 |
| 11P | 20.00 | 24.00 |
| 12P | 22.00 | 26.00 |
| 13P | 24.00 | 28.00 |
| 14P | 26.00 | 30.00 |
| 15P | 28.00 | 32.00 |

Unit: mm

A2008HMB-XP

2.00mm pitch Housing

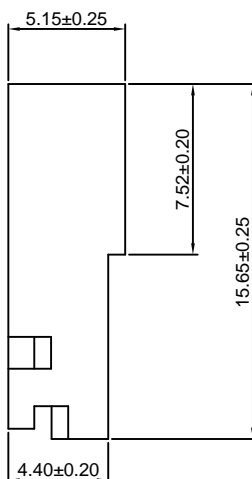
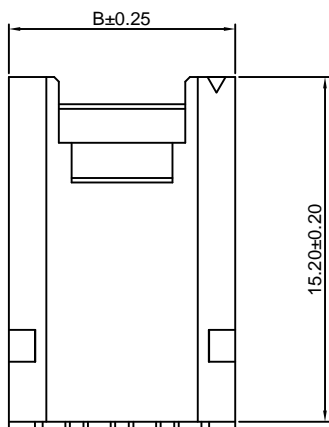
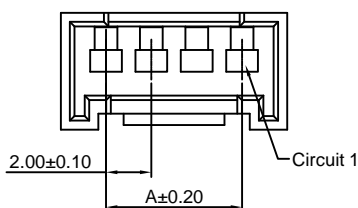
Reference Informations:

- *Material:Nylon 66,UL94V-0
- *Suitable CJT A2008M-T series Terminal
- *Mates with CJT A2008H,HB-XP series Single Row Housing or A2008S-XP series Seal
- *Color:White

Ordering Information:

A2008HMB-XP - *** - **
 1 2 3

- 1.Part No.
- 2.Material:
 (Blank):Nylon 66,UL94V-0
 GWT:Nylon 66,UL94V-0,GWT 750 °C
- 3.Color:
 (Blank):White
 BK:Black
 RD:Red
 YL:Yellow
 BL:Blue
 GN:Green
 GY:Gray



Ordering Information & Dimensions:

| PART NO. | Dimensions | |
|----------|------------|-------|
| | A | B |
| 2P | 2.00 | 5.98 |
| 3P | 4.00 | 7.98 |
| 4P | 6.00 | 9.98 |
| 5P | 8.00 | 11.98 |
| 6P | 10.00 | 13.98 |
| 7P | 12.00 | 15.98 |
| 8P | 14.00 | 17.98 |
| 9P | 16.00 | 19.98 |
| 10P | 18.00 | 21.98 |
| 11P | 20.00 | 23.98 |
| 12P | 22.00 | 25.98 |
| 13P | 24.00 | 27.98 |
| 14P | 26.00 | 29.98 |
| 15P | 28.00 | 31.98 |

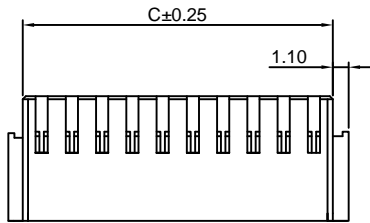
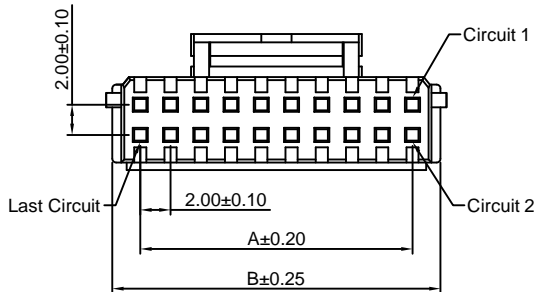
Unit: mm

A2008H-2xXP

2.00mm pitch Dual Row Housing

Reference Informations:

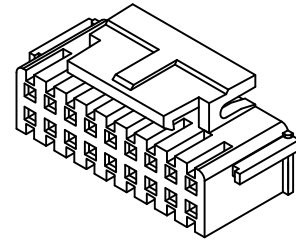
- *Material:Nylon 66,UL94V-0
- *Suitable CJT A2008-T-A series Terminal
- *Mates with CJT A2008WV,WR,WV-S-2xXP series Dual Row Wafer
- *Color:White



Ordering Information:

A2008H-2xXP - ***
1 2

- 1.Part No.
- 2.Material:
(Blank):Nylon 66,UL94V-0
GWT:Nylon 66,UL94V-0,GWT 750 °C



Ordering Information & Dimensions:

| PART NO. | Dimensions | | |
|----------|------------|-------|-------|
| | A | B | C |
| 2x2P | 2.00 | 5.70 | 4.70 |
| 2x3P | 4.00 | 7.70 | 6.70 |
| 2x4P | 6.00 | 9.70 | 8.70 |
| 2x5P | 8.00 | 11.70 | 10.70 |
| 2x6P | 10.00 | 13.70 | 12.70 |
| 2x7P | 12.00 | 15.70 | 14.70 |
| 2x8P | 14.00 | 17.70 | 16.70 |
| 2x9P | 16.00 | 19.70 | 18.70 |
| 2x10P | 18.00 | 21.70 | 20.70 |
| 2x11P | 20.00 | 23.70 | 22.70 |
| 2x12P | 22.00 | 25.70 | 24.70 |
| 2x13P | 24.00 | 27.70 | 26.70 |
| 2x14P | 26.00 | 29.70 | 28.70 |
| 2x15P | 28.00 | 31.70 | 30.70 |
| 2x16P | 30.00 | 33.70 | 32.70 |
| 2x20P | 38.00 | 41.70 | 40.70 |

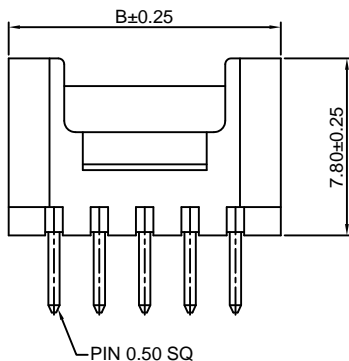
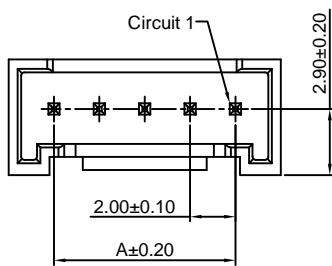
Unit: mm

A2008WV-XP

2.00mm pitch 180° Wafer

Reference Informations:

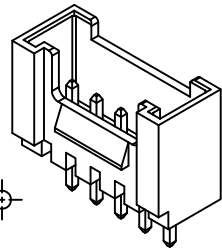
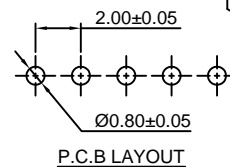
- *Material:Pin:Brass/Tin over Nickel
Insulator:Nylon 66,UL94V-0
- *Mates with CJT A2008H,HB-XP series Single Row Housing
- *Color:White



Ordering Information:

A2008WV-XP - *** - ** - **
1 2 3 4

- 1.Part No.
- 2.Material:
(Blank):Nylon 66,UL94V-0
GWT:Nylon 66,UL94V-0,GWT 750 °C
- 3.Color:
(Blank):White
BK:Black
RD:Red
YL:Yellow
BL:Blue
GN:Green
GY:Gray
- 4.Finish:
(Blank):Tin over Nickel
G:Gold over Nickel



Ordering Information & Dimensions:

| PART NO. | Dimensions | |
|----------|------------|-------|
| | A | B |
| 2P | 2.00 | 6.00 |
| 3P | 4.00 | 8.00 |
| 4P | 6.00 | 10.00 |
| 5P | 8.00 | 12.00 |
| 6P | 10.00 | 14.00 |
| 7P | 12.00 | 16.00 |
| 8P | 14.00 | 18.00 |
| 9P | 16.00 | 20.00 |
| 10P | 18.00 | 22.00 |
| 11P | 20.00 | 24.00 |
| 12P | 22.00 | 26.00 |
| 13P | 24.00 | 28.00 |
| 14P | 26.00 | 30.00 |
| 15P | 28.00 | 32.00 |
| 16P | 30.00 | 34.00 |

Unit: mm

A2008WR-XP

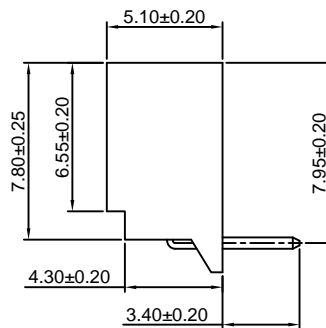
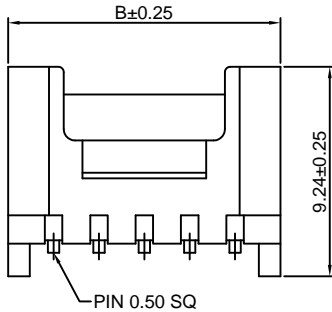
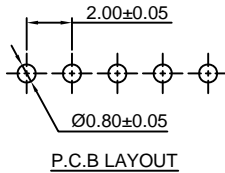
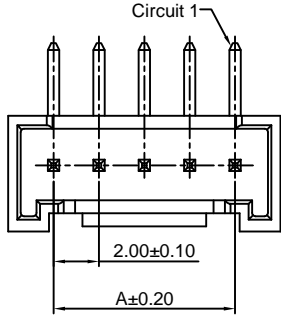
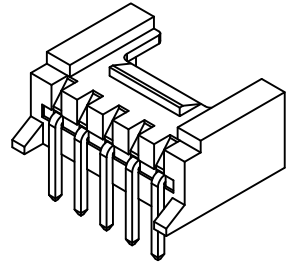
2.00mm pitch 90° Wafer

Reference Informations:

- *Material: Pin: Brass/Tin over Nickel
Insulator: Nylon 66, UL94V-0
- *Mates with CJT A2008H, HB-XP series Single Row Housing
- *Color: White

Ordering Information:

- A2008WR-XP - *** - ** - **
1 2 3 4
- Part No.
 - Material:
(Blank): Nylon 66, UL94V-0
GWT: Nylon 66, UL94V-0, GWT 750 °C
 - Color:
(Blank): White
BK: Black
RD: Red
YL: Yellow
BL: Blue
GN: Green
GY: Gray
 - Finish:
(Blank): Tin over Nickel
G: Gold over Nickel



Ordering Information & Dimensions:

| PART NO. | Dimensions | |
|----------|------------|-------|
| | A | B |
| 2P | 2.00 | 6.00 |
| 3P | 4.00 | 8.00 |
| 4P | 6.00 | 10.00 |
| 5P | 8.00 | 12.00 |
| 6P | 10.00 | 14.00 |
| 7P | 12.00 | 16.00 |
| 8P | 14.00 | 18.00 |
| 9P | 16.00 | 20.00 |
| 10P | 18.00 | 22.00 |
| 11P | 20.00 | 24.00 |
| 12P | 22.00 | 26.00 |
| 13P | 24.00 | 28.00 |
| 14P | 26.00 | 30.00 |
| 15P | 28.00 | 32.00 |
| 16P | 30.00 | 34.00 |

Unit: mm

A2008WVA-XP

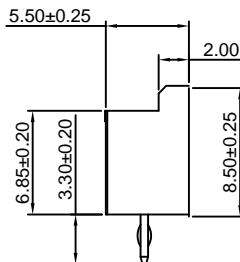
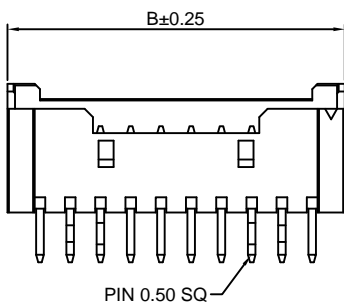
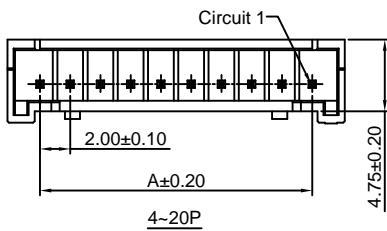
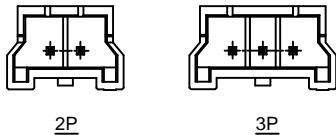
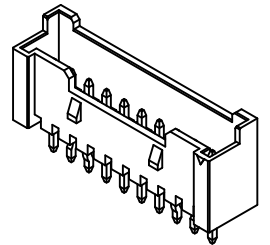
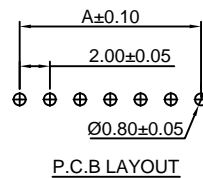
2.00mm pitch 180° Wafer

Reference Informations:

- *Material: Pin: Brass/Tin over Nickel
Insulator: Nylon 66, UL94V-0
- *Mates with CJT A2008HA-XP series Single Row Housing
- *Color: Ivory

Ordering Information:

- A2008WVA-XP - *** - ** - **
1 2 3 4
- Part No.
 - Material:
(Blank): Nylon 66, UL94V-0
GWT: Nylon 66, UL94V-0, GWT 750 °C
 - Color:
(Blank): White
BK: Black
RD: Red
YL: Yellow
BL: Blue
GN: Green
GY: Gray
 - Finish:
(Blank): Tin over Nickel
G: Gold over Nickel



Ordering Information & Dimensions:

| PART NO. | Dimensions | |
|----------|------------|-------|
| | A | B |
| 2P | 2.00 | 7.70 |
| 3P | 4.00 | 9.70 |
| 4P | 6.00 | 10.30 |
| 5P | 8.00 | 12.30 |
| 6P | 10.00 | 14.30 |
| 7P | 12.00 | 16.30 |
| 8P | 14.00 | 18.30 |
| 9P | 16.00 | 20.30 |
| 10P | 18.00 | 22.30 |
| 11P | 20.00 | 24.30 |
| 12P | 22.00 | 26.30 |
| 13P | 24.00 | 28.30 |
| 14P | 26.00 | 30.30 |
| 15P | 28.00 | 32.30 |
| 16P | 30.00 | 34.30 |
| 17P | 32.00 | 36.30 |
| 18P | 34.00 | 38.30 |
| 19P | 36.00 | 40.30 |
| 20P | 38.00 | 42.30 |

Unit: mm

A2008WRA-XP

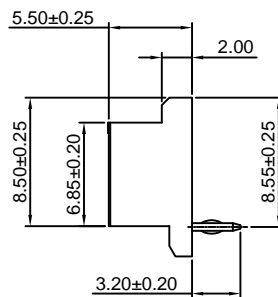
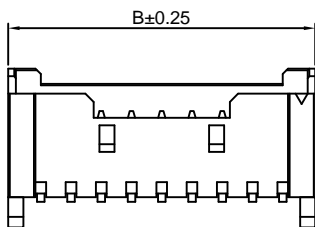
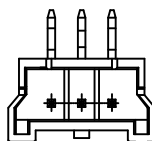
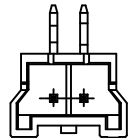
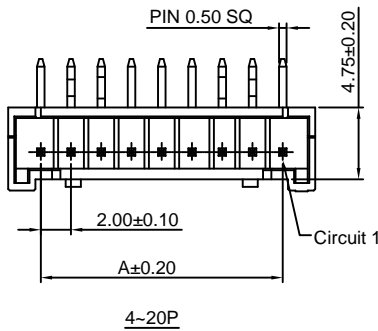
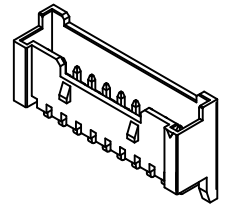
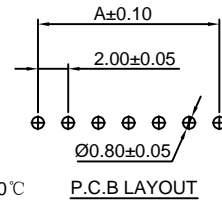
2.00mm pitch 90° Wafer

Reference Informations:

- *Material: Pin: Brass/Tin over Nickel
Insulator: Nylon 66, UL94V-0
- *Mates with CJT A2008HA-XP series Single Row Housing
- *Color: Ivory

Ordering Information:
A2008WRA-XP - *** - ** - **
1 2 3 4

1. Part No.
2. Material:
(Blank): Nylon 66, UL94V-0
GWT: Nylon 66, UL94V-0, GWT 750°C
3. Color:
(Blank): White
BK: Black
RD: Red
YL: Yellow
BL: Blue
GN: Green
GY: Gray
4. Finish:
(Blank): Tin over Nickel
G: Gold over Nickel



Ordering Information & Dimensions:

| PART NO. | Dimensions | |
|----------|------------|-------|
| | A | B |
| 2P | 2.00 | 7.70 |
| 3P | 4.00 | 9.70 |
| 4P | 6.00 | 10.30 |
| 5P | 8.00 | 12.30 |
| 6P | 10.00 | 14.30 |
| 7P | 12.00 | 16.30 |
| 8P | 14.00 | 18.30 |
| 9P | 16.00 | 20.30 |
| 10P | 18.00 | 22.30 |
| 11P | 20.00 | 24.30 |
| 12P | 22.00 | 26.30 |
| 13P | 24.00 | 28.30 |
| 14P | 26.00 | 30.30 |
| 15P | 28.00 | 32.30 |
| 16P | 30.00 | 34.30 |
| 17P | 32.00 | 36.30 |
| 18P | 34.00 | 38.30 |
| 19P | 36.00 | 40.30 |
| 20P | 38.00 | 42.30 |

Unit: mm

A2008WV-2xXP

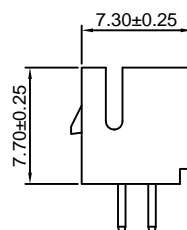
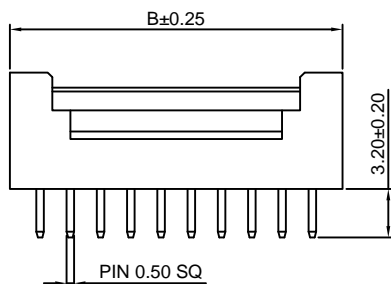
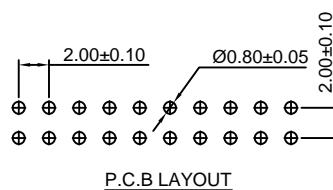
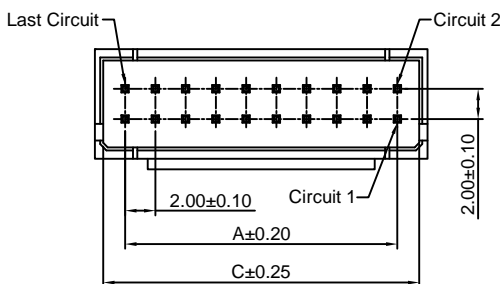
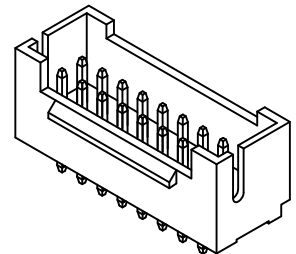
2.00mm pitch 180° Dual Row Wafer

Reference Informations:

- *Material: Pin: Brass/Tin over Nickel
Insulator: Nylon 66, UL94V-0
- *Mates with CJT A2008H-2xXP series Dual Row Housing
- *Color: Ivory

Ordering Information:
A2008WV-2xXP - *** - **
1 2 3

1. Part No.
2. Material:
(Blank): Nylon 66, UL94V-0
GWT: Nylon 66, UL94V-0, GWT 750°C
3. Finish:
(Blank): Tin over Nickel
G: Gold over Nickel



Ordering Information & Dimensions:

| PART NO. | Dimensions | | |
|----------|------------|-------|-------|
| | A | B | C |
| 2x2P | 2.00 | 6.00 | 4.80 |
| 2x3P | 4.00 | 8.00 | 6.80 |
| 2x4P | 6.00 | 10.00 | 8.80 |
| 2x5P | 8.00 | 12.00 | 10.80 |
| 2x6P | 10.00 | 14.00 | 12.80 |
| 2x7P | 12.00 | 16.00 | 14.80 |
| 2x8P | 14.00 | 18.00 | 16.80 |
| 2x9P | 16.00 | 20.00 | 18.80 |
| 2x10P | 18.00 | 22.00 | 20.80 |
| 2x11P | 20.00 | 24.00 | 22.80 |
| 2x12P | 22.00 | 26.00 | 24.80 |
| 2x13P | 24.00 | 28.00 | 26.80 |
| 2x14P | 26.00 | 30.00 | 28.80 |
| 2x15P | 28.00 | 32.00 | 30.80 |
| 2x16P | 30.00 | 34.00 | 32.80 |
| 2x20P | 38.00 | 42.00 | 40.80 |

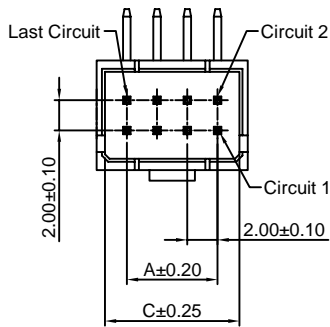
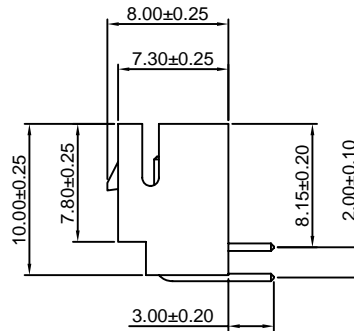
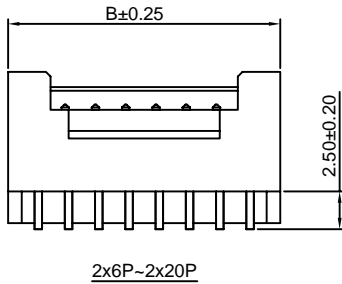
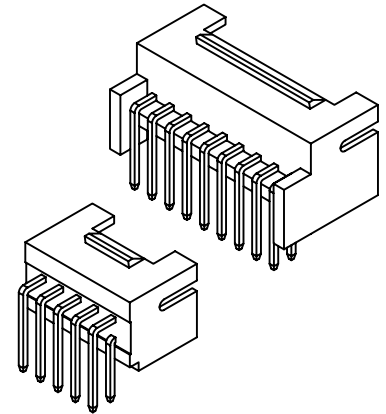
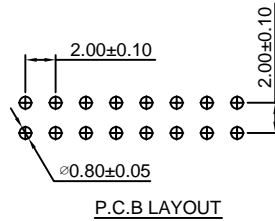
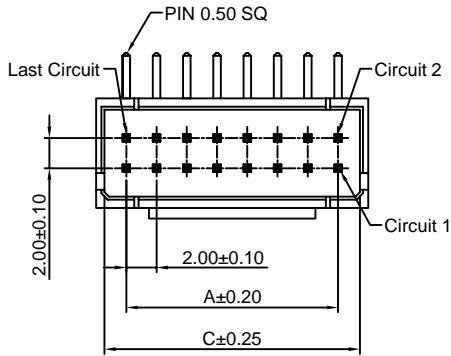
Unit: mm

A2008WR-2xXP

2.00mm pitch 90° Dual Row Wafer

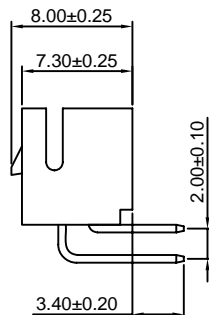
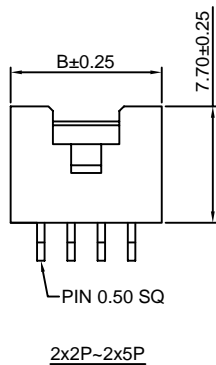
Reference Informations:

- *Material: Pin: Brass/Tin over Nickel
Insulator: Nylon 66, UL94V-0
- *Mates with CJT A2008H-2xXP series Dual Row Housing
- *Color: Ivory



Ordering Information:
A2008WR-2xXP - *** - **
1 2 3

- Part No.
- Material:
(Blank): Nylon 66, UL94V-0
GWT: Nylon 66, UL94V-0, GWT 750°C
- Finish:
(Blank): Tin over Nickel
G: Gold over Nickel



Ordering Information & Dimensions:

| PART NO. | Dimensions | | |
|----------|------------|-------|-------|
| | A | B | C |
| 2x2P | 2.00 | 6.00 | 4.80 |
| 2x3P | 4.00 | 8.00 | 6.80 |
| 2x4P | 6.00 | 10.00 | 8.80 |
| 2x5P | 8.00 | 12.00 | 10.80 |
| 2x6P | 10.00 | 14.00 | 12.80 |
| 2x7P | 12.00 | 16.00 | 14.80 |
| 2x8P | 14.00 | 18.00 | 16.80 |
| 2x9P | 16.00 | 20.00 | 18.80 |
| 2x10P | 18.00 | 22.00 | 20.80 |
| 2x11P | 20.00 | 24.00 | 22.80 |
| 2x12P | 22.00 | 26.00 | 24.80 |
| 2x13P | 24.00 | 28.00 | 26.80 |
| 2x14P | 26.00 | 30.00 | 28.80 |
| 2x15P | 28.00 | 32.00 | 30.80 |
| 2x16P | 30.00 | 34.00 | 32.80 |
| 2x20P | 38.00 | 42.00 | 40.80 |

Unit: mm

A2008WV-S-XP

2.00mm pitch 180° Wafer-SMT TYPE

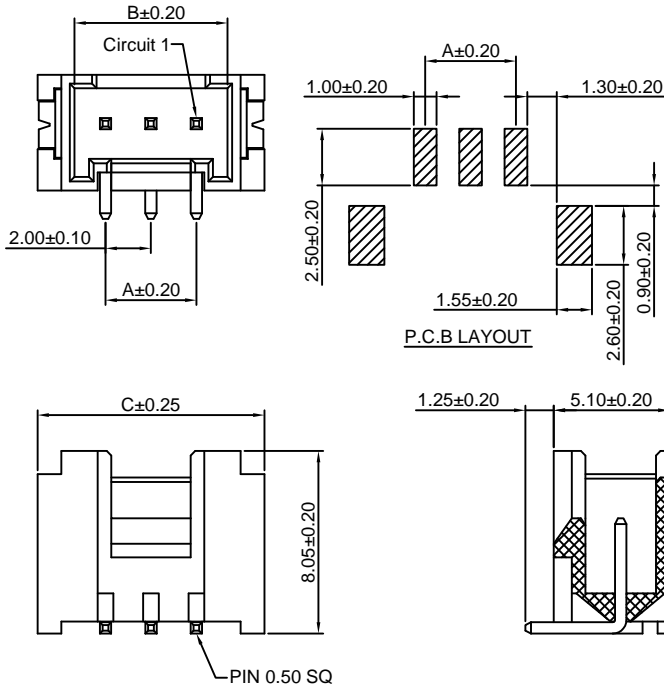
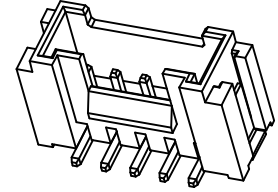
Reference Informations:

- *Material: Pin: Brass/Tin over Nickel
Insulator: Nylon 6T, UL94V-0
- *Mates with CJT A2008H, HB-XP series Single Row Housing
- *Color: Ivory

Ordering Information:

A2008WV-S-XP - *** - ** - **
1 2 3 4

1. Part No.
2. Material:
(Blank): Nylon 6T, UL94V-0
GWT: Nylon 6T, UL94V-0, GWT 750 °C
3. Color:
(Blank): White
BK: Black
RD: Red
YL: Yellow
BL: Blue
GN: Green
GY: Gray
4. Finish:
(Blank): Tin over Nickel
G: Gold over Nickel



Ordering Information & Dimensions:

| PART NO. | Dimensions | | |
|----------|------------|-------|-------|
| | A | B | C |
| 2P | 2.00 | 4.75 | 8.00 |
| 3P | 4.00 | 6.75 | 10.00 |
| 4P | 6.00 | 8.75 | 12.00 |
| 5P | 8.00 | 10.75 | 14.00 |
| 6P | 10.00 | 12.75 | 16.00 |
| 7P | 12.00 | 14.75 | 18.00 |
| 8P | 14.00 | 16.75 | 20.00 |
| 9P | 16.00 | 18.75 | 22.00 |
| 10P | 18.00 | 20.75 | 24.00 |
| 11P | 20.00 | 22.75 | 26.00 |
| 12P | 22.00 | 24.75 | 28.00 |
| 13P | 24.00 | 26.75 | 30.00 |
| 14P | 26.00 | 28.75 | 32.00 |
| 15P | 28.00 | 30.75 | 34.00 |
| 16P | 30.00 | 32.75 | 36.00 |

Unit: mm

A2008WR-S-XP

2.00mm pitch 90° Wafer-SMT TYPE

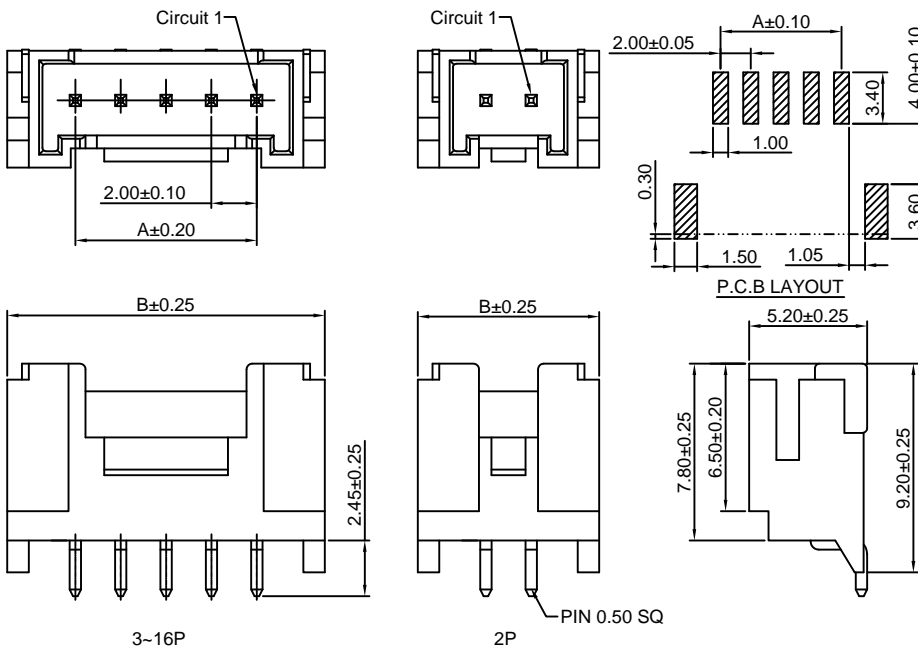
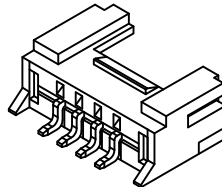
Reference Informations:

- *Material: Pin: Brass/Tin over Nickel
Insulator: Nylon 6T, UL94V-0
- *Mates with CJT A2008H, HB-XP series Single Row Housing
- *Color: Beige

Ordering Information:

A2008WR-S-XP - *** - ** - **
1 2 3 4

1. Part No.
2. Material:
(Blank): Nylon 6T, UL94V-0
GWT: Nylon 6T, UL94V-0, GWT 750 °C
3. Color:
(Blank): White
BK: Black
RD: Red
YL: Yellow
BL: Blue
GN: Green
GY: Gray
4. Finish:
(Blank): Tin over Nickel
G: Gold over Nickel



Ordering Information & Dimensions:

| PART NO. | Dimensions | |
|----------|------------|-------|
| | A | B |
| 2P | 2.00 | 8.00 |
| 3P | 4.00 | 10.00 |
| 4P | 6.00 | 12.00 |
| 5P | 8.00 | 14.00 |
| 6P | 10.00 | 16.00 |
| 7P | 12.00 | 18.00 |
| 8P | 14.00 | 20.00 |
| 9P | 16.00 | 22.00 |
| 10P | 18.00 | 24.00 |
| 11P | 20.00 | 26.00 |
| 12P | 22.00 | 28.00 |
| 13P | 24.00 | 30.00 |
| 14P | 26.00 | 32.00 |
| 15P | 28.00 | 34.00 |
| 16P | 30.00 | 36.00 |

Unit: mm

A2008WV-S-2xXP

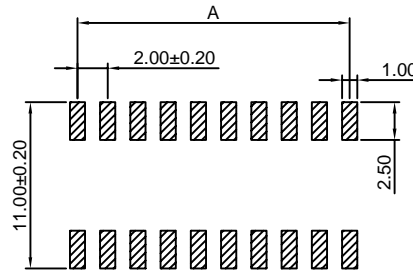
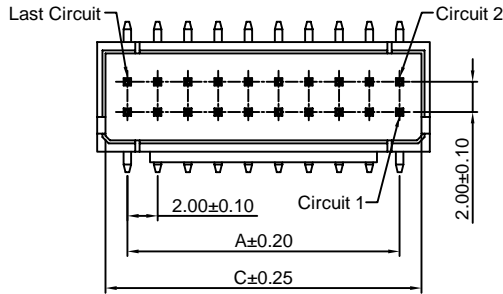
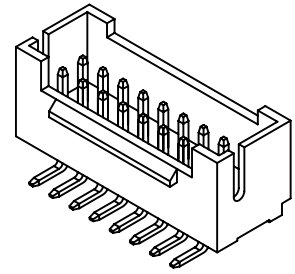
2.00mm pitch 180° Dual Row Wafer-SMT TYPE

Reference Informations:

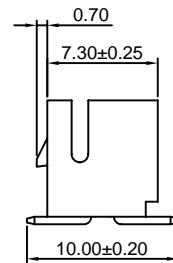
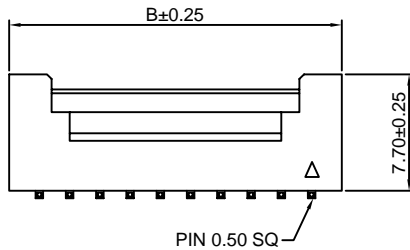
- *Material: Pin: Brass/Tin over Nickel
Insulator: Nylon 6T, UL94V-0
- *Mates with CJT A2008H-2xXP series Dual Row Housing
- *Color: Ivory

Ordering Information:

- A2008WV-S-2xXP - *** - **
 $\frac{1}{2} - \frac{3}{3}$
1. Part No.
 2. Material:
(Blank): Nylon 6T, UL94V-0
GWT: Nylon 6T, UL94V-0, GWT 750 °C
 3. Finish:
(Blank): Tin over Nickel
G: Gold over Nickel



P.C.B LAYOUT



Ordering Information & Dimensions:

| PART NO. | Dimensions | | |
|----------|------------|-------|-------|
| | A | B | C |
| 2x2P | 2.00 | 6.00 | 4.80 |
| 2x3P | 4.00 | 8.00 | 6.80 |
| 2x4P | 6.00 | 10.00 | 8.80 |
| 2x5P | 8.00 | 12.00 | 10.80 |
| 2x6P | 10.00 | 14.00 | 12.80 |
| 2x7P | 12.00 | 16.00 | 14.80 |
| 2x8P | 14.00 | 18.00 | 16.80 |
| 2x9P | 16.00 | 20.00 | 18.80 |
| 2x10P | 18.00 | 22.00 | 20.80 |
| 2x11P | 20.00 | 24.00 | 22.80 |
| 2x12P | 22.00 | 26.00 | 24.80 |
| 2x13P | 24.00 | 28.00 | 26.80 |
| 2x14P | 26.00 | 30.00 | 28.80 |
| 2x15P | 28.00 | 32.00 | 30.80 |
| 2x16P | 30.00 | 34.00 | 32.80 |
| 2x20P | 38.00 | 42.00 | 40.80 |

Unit: mm

A2008S-XP

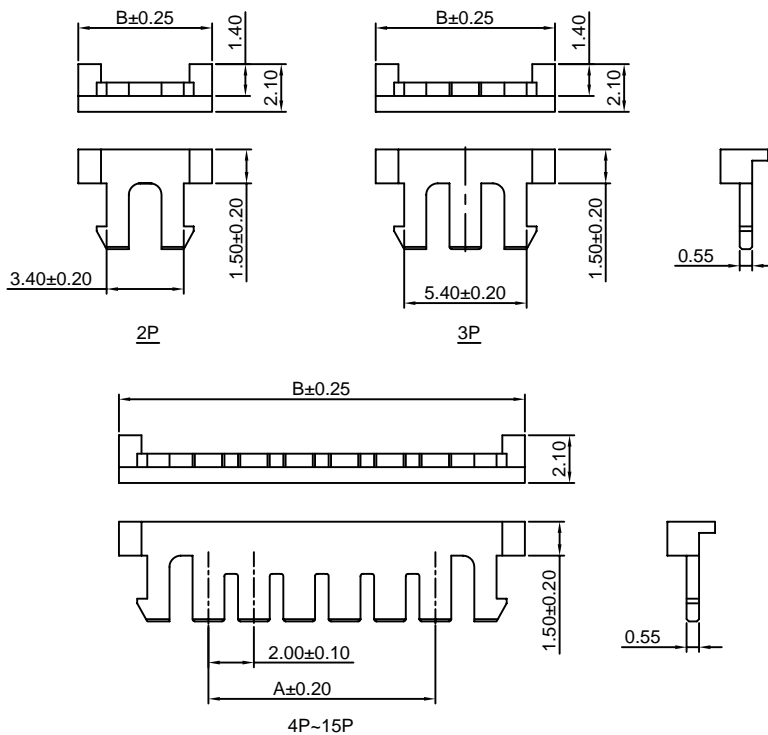
2.00mm pitch Seal

Reference Informations:

- *Material: Nylon 66, UL94V-2
- *Use in CJT A2008HB, HMB-XP series Housing
- *Color: Brick red

Ordering Information:

- A2008S-XP - ***
 $\frac{1}{2}$
1. Part No.
 2. Material:
(Blank): Nylon 66, UL94V-2
GWT: Nylon 66, UL94V-0, GWT 750 °C



Ordering Information & Dimensions:

| PART NO. | Dimensions | |
|----------|------------|-------|
| | A | B |
| 2P | 3.40 | 5.90 |
| 3P | 5.40 | 7.90 |
| 4P | 7.40 | 9.90 |
| 5P | 9.40 | 11.90 |
| 6P | 11.40 | 13.90 |
| 7P | 13.40 | 15.90 |
| 8P | 15.40 | 17.90 |
| 9P | 17.40 | 19.90 |
| 10P | 19.40 | 21.90 |
| 11P | 21.40 | 23.90 |
| 12P | 23.40 | 25.90 |
| 13P | 25.40 | 27.90 |
| 14P | 27.40 | 29.90 |
| 15P | 29.40 | 31.90 |

Unit: mm

X-ON Electronics

Largest Supplier of Electrical and Electronic Components

Click to view similar products for [Headers & Wire Housings](#) category:

Click to view products by [Changjiang](#) manufacturer:

Other Similar products are found below :

[57102-F02-18ULF](#) [58102-G61-06LF](#) [0009485154](#) [009176003701906](#) [0050291907](#) [00-9021-0611-00-339](#) [02.125.8002.8](#) [609-3404](#) [61062-3](#)
[622-0430](#) [622-3653LF](#) [63453-116](#) [636-1030](#) [636-1427](#) [636-3427](#) [636-4007](#) [641938-9](#) [644827-2](#) [65495-038](#) [65692-001LF](#) [65781-018](#)
[65781-047](#) [65817-010LF](#) [65817-015LF](#) [66207-023LF](#) [67016-026LF](#) [67095-007LF](#) [68631-112](#) [68645-018](#) [68648-049](#) [699319-000](#)
[70.362.1628.0](#) [70-4210](#) [70-4226B](#) [70-4853B](#) [707-5020](#) [707-5028](#) [71.350.2428.0](#) [71961-016LF](#) [733-134](#) [754199-000](#) [760-3052](#) [787-8014-00](#)
[FCN-367T-T012/H](#) [80.063.4001.1](#) [800-90-001-10-001000](#) [800-90-010-10-002000](#) [801-43-002-10-013000](#) [801-43-006-10-002000](#)
[803-41-018-10-001000](#)