

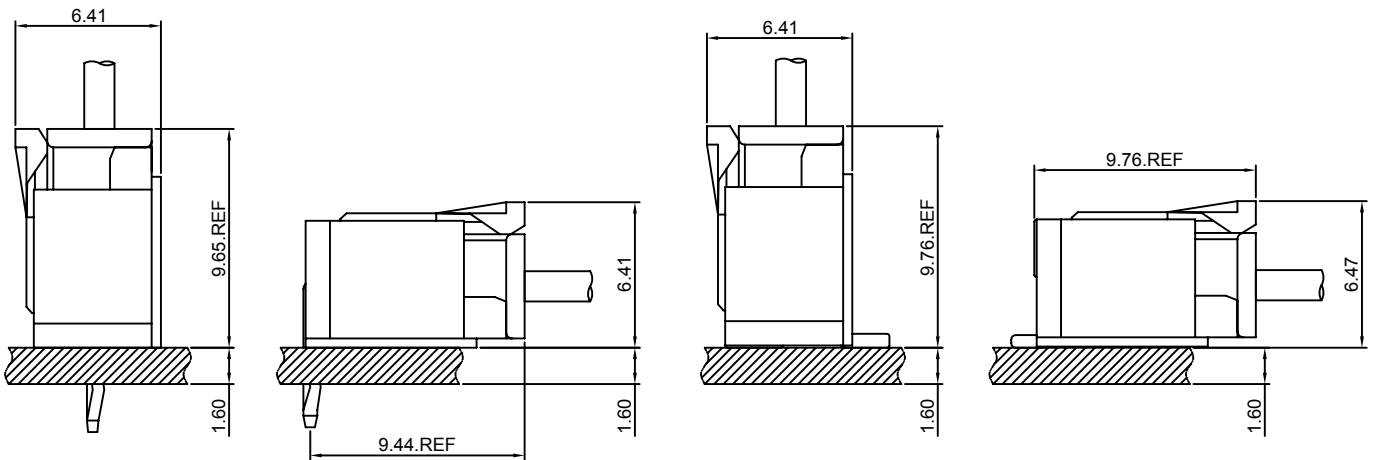
## Specifications

- Current rating:3A AC,DC
- Voltage rating:250V AC,DC
- Temperature range:-40°C~+105°C
- Contact resistance:10mΩMax.
- Insulation resistance:1000MΩMin.
- Withstanding voltage:800V AC/minute
- \*Compliant with RoHS and REACH\*
- \*Meet the HF/Halogen Free,need to customize\*
- \*Contact CJT for details\*

## Standards



## Assembly layout





# A2012 SERIES

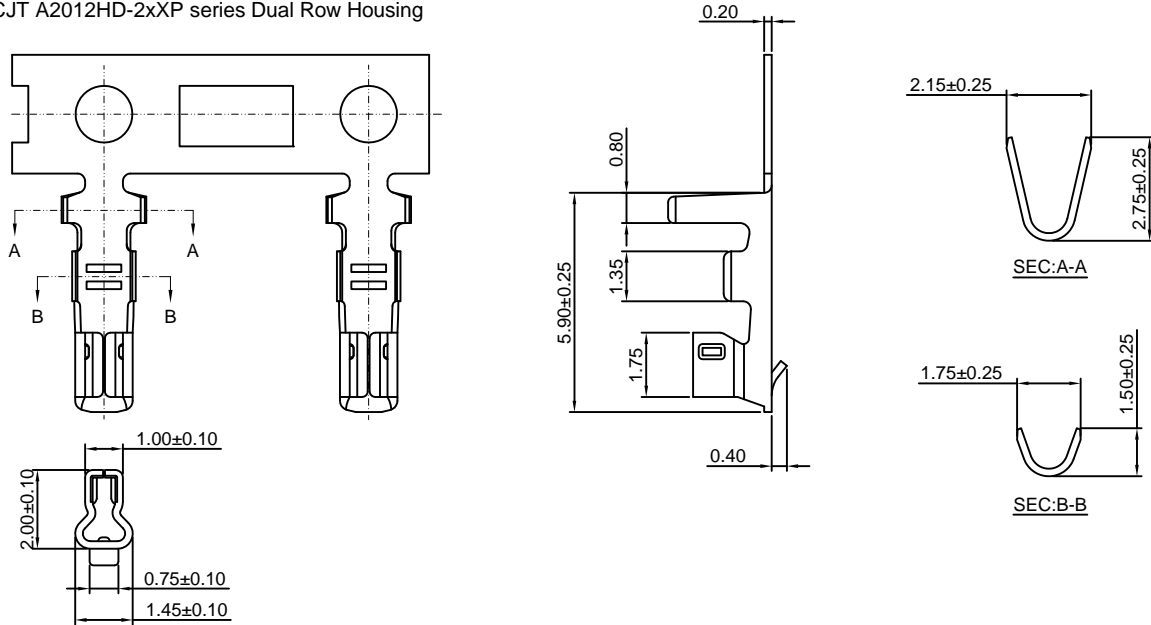
2.00mm pitch wire to board connector

## A2012-T-D

2.00mm pitch Crimp Terminal

### Reference Informations:

\*Used in CJT A2012HD-2xXP series Dual Row Housing



Ordering information & Specifications:

Unit:mm

| Part NO.   | Wire Range | Insulation O.D. | Material        | Finish           | Qty/reel   |
|------------|------------|-----------------|-----------------|------------------|------------|
| A2012-TP-D | AWG#24-#30 | 1.50mm(max)     | Phosphor Bronze | Tin over Nickel  | 10,000 PCS |
| A2012-GP-D | AWG#24-#30 | 1.50mm(max)     | Phosphor Bronze | Gold over Nickel | 10,000 PCS |

Optional Gold plating available but MOQ requested

## A2012H-XP

2.00mm pitch Housing

### Reference Informations:

\*Material:Nylon 66,UL94V-0

\*Suitable CJT A2006-T series Terminal

\*Mates with CJT A2012WV,WR,WV-S,WR-S,WV-F-XP, A2012WVA,WRA,WVA-F,WRA-F-XP series Wafer

\*Color:White

Ordering Information:

A2012H-XP - \*\*\* - \*\*  
1 2 3

1.Part No.

2.Material:

(Blank):Nylon 66,UL94V-0

GWT:Nylon 66,UL94V-0,GWT 750 °C

3.Color:

(Blank):White

BK:Black

RD:Red

BL:Blue

GN:Green

OR:Orange

BR:Brown

VI:Violet

PK:Pink

YL:Yellow

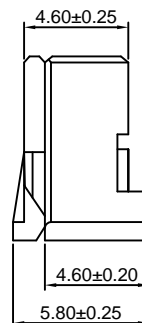
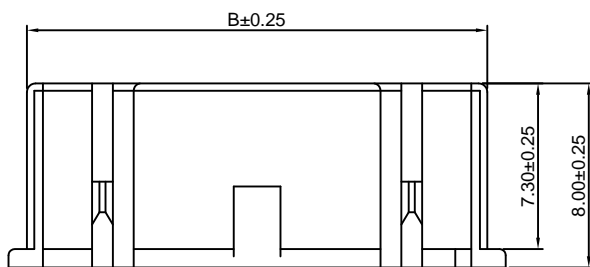
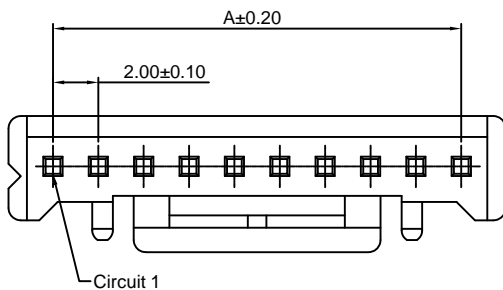
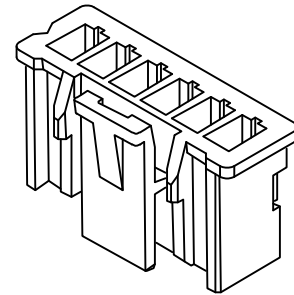
LY:Lemon yellow

VY:Vivid yellow

LE:Light blue

GY:Gray

TR:Tomato red



Ordering Information & Dimensions:

| PART NO. | Dimensions |       |
|----------|------------|-------|
|          | A          | B     |
| 2P       | 2.00       | 4.30  |
| 3P       | 4.00       | 6.30  |
| 4P       | 6.00       | 8.30  |
| 5P       | 8.00       | 10.30 |
| 6P       | 10.00      | 12.30 |
| 7P       | 12.00      | 14.30 |
| 8P       | 14.00      | 16.30 |
| 9P       | 16.00      | 18.30 |
| 10P      | 18.00      | 20.30 |
| 11P      | 20.00      | 22.30 |
| 12P      | 22.00      | 24.30 |
| 13P      | 24.00      | 26.30 |
| 14P      | 26.00      | 28.30 |
| 15P      | 28.00      | 30.30 |
| 16P      | 30.00      | 32.30 |

Unit: mm

# CJT<sub>conn</sub> A2012 SERIES

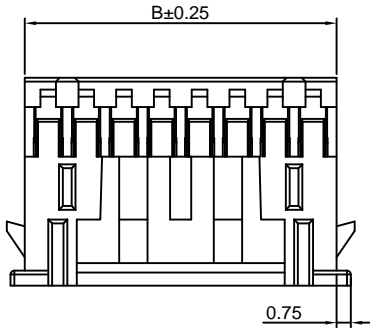
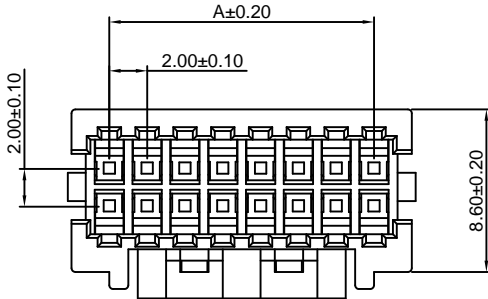
2.00mm pitch wire to board connector

## A2012HD-2xXP

2.00mm pitch Dual Row Housing

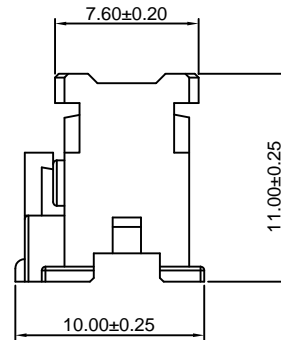
### Reference Informations:

- \*Material:Nylon 66,UL94V-0
- \*Suitable CJT A2012-T-D series Terminal
- \*Mates with CJT A2012WV,WV-F,WR-F-2xXP series Dual Row Wafer
- \*Color:White



### Ordering Information:

- A2012HD-2xXP - \*\*\*  
 1 2  
 1.Part No.  
 2.Material:  
 (Blank):Nylon 66,UL94V-0  
 GWT:Nylon 66,UL94V-0,GWT 750 °C



### Ordering Information & Dimensions:

| PART NO. | Dimensions |       |
|----------|------------|-------|
|          | A          | B     |
| 2x2P     | 2.00       | 5.00  |
| 2x3P     | 4.00       | 7.00  |
| 2x4P     | 6.00       | 9.00  |
| 2x5P     | 8.00       | 10.50 |
| 2x6P     | 10.00      | 12.50 |
| 2x7P     | 12.00      | 14.50 |
| 2x8P     | 14.00      | 16.50 |
| 2x9P     | 16.00      | 18.50 |
| 2x10P    | 18.00      | 20.50 |
| 2x11P    | 20.00      | 22.50 |
| 2x12P    | 22.00      | 24.50 |
| 2x13P    | 24.00      | 26.50 |
| 2x14P    | 26.00      | 28.50 |
| 2x15P    | 28.00      | 30.50 |
| 2x16P    | 30.00      | 32.50 |
| 2x17P    | 32.00      | 34.50 |
| 2x18P    | 34.00      | 36.50 |
| 2x19P    | 36.00      | 38.50 |
| 2x20P    | 38.00      | 40.50 |

Unit: mm

## A2012WV-XP

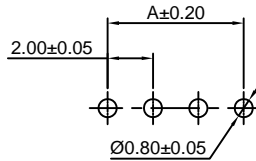
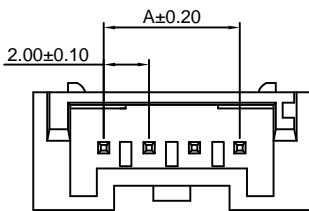
2.00mm pitch 180° Wafer

### Reference Informations:

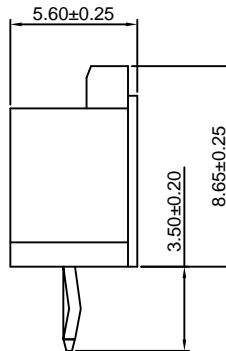
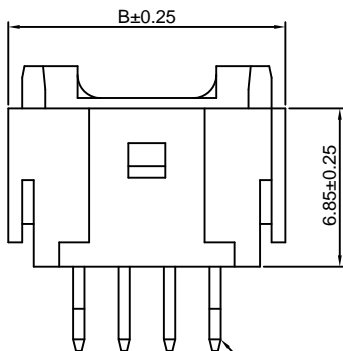
- \*Material:Pin:Brass/Tin over Nickel  
Insulator:Nylon 6T,UL94V-0
- \*Mates with CJT A2012H-XP series Housing
- \*Color:Ivory

### Ordering Information:

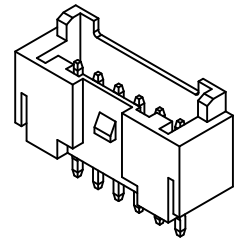
- A2012WV-XP - \*\*\* - \*\*  
 1 2 3  
 1.Part No.  
 2.Material:  
 (Blank):Nylon 6T,UL94V-0  
 GWT:Nylon 6T,UL94V-0,GWT 750 °C  
 3.Finish:  
 (blank):Tin over Nickel  
 G:Gold over Nickel



P.C.B LAYOUT



PIN 0.50 SQ  
Circuit 1



### Ordering Information & Dimensions:

| PART NO. | Dimensions |       |
|----------|------------|-------|
|          | A          | B     |
| 2P       | 2.00       | 8.00  |
| 3P       | 4.00       | 10.00 |
| 4P       | 6.00       | 12.00 |
| 5P       | 8.00       | 14.00 |
| 6P       | 10.00      | 16.00 |
| 7P       | 12.00      | 18.00 |
| 8P       | 14.00      | 20.00 |
| 9P       | 16.00      | 22.00 |
| 10P      | 18.00      | 24.00 |
| 11P      | 20.00      | 26.00 |
| 12P      | 22.00      | 28.00 |
| 13P      | 24.00      | 30.00 |
| 14P      | 26.00      | 32.00 |
| 15P      | 28.00      | 34.00 |
| 16P      | 30.00      | 36.00 |

Unit: mm

# CJTconn A2012 SERIES

2.00mm pitch wire to board connector

## A2012WR-XP

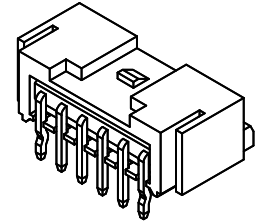
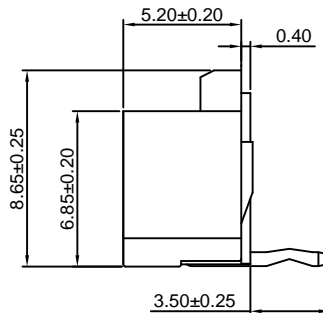
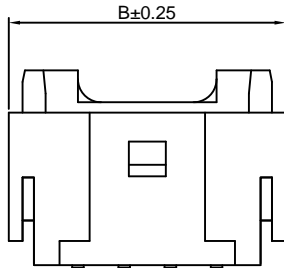
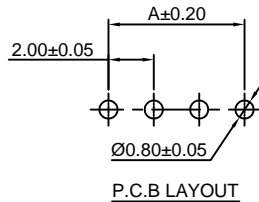
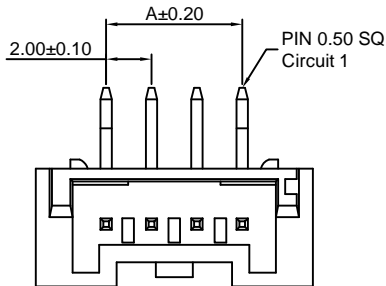
2.00mm pitch 90° Wafer

### Reference Informations:

- \*Material:Pin:Brass/Tin over Nickel  
Insulator:Nylon 6T,UL94V-0
- \*Mates with CJT A2012H-XP series Housing
- \*Color:Ivory

### Ordering Information:

- A2012WR-XP - \*\*\* - \*\*  
 1                      2                      3
- 1.Part No.
  - 2.Material:  
(Blank):Nylon 6T,UL94V-0  
GWT:Nylon 6T,UL94V-0,GWT 750 °C
  - 3.Finish:  
(blank):Tin over Nickel  
G:Gold over Nickel



### Ordering Information & Dimensions:

| PART NO. | Dimensions |       |
|----------|------------|-------|
|          | A          | B     |
| 2P       | 2.00       | 8.00  |
| 3P       | 4.00       | 10.00 |
| 4P       | 6.00       | 12.00 |
| 5P       | 8.00       | 14.00 |
| 6P       | 10.00      | 16.00 |
| 7P       | 12.00      | 18.00 |
| 8P       | 14.00      | 20.00 |
| 9P       | 16.00      | 22.00 |
| 10P      | 18.00      | 24.00 |
| 11P      | 20.00      | 26.00 |
| 12P      | 22.00      | 28.00 |
| 13P      | 24.00      | 30.00 |
| 14P      | 26.00      | 32.00 |
| 15P      | 28.00      | 34.00 |
| 16P      | 30.00      | 36.00 |

Unit: mm

## A2012WV-S-XP

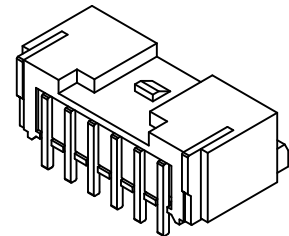
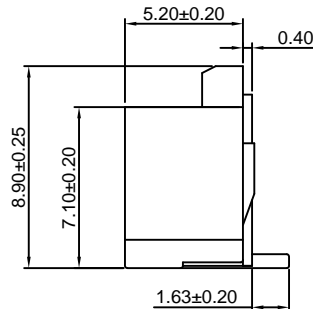
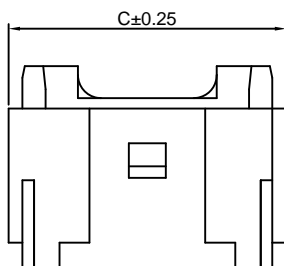
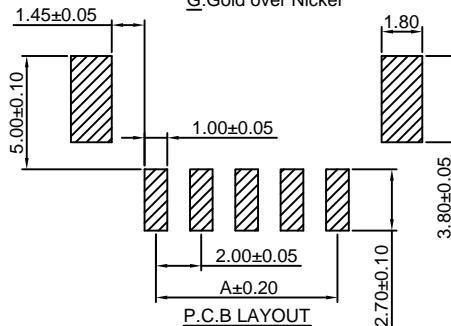
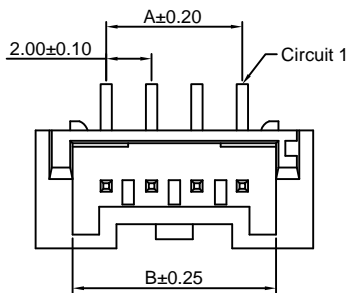
2.00mm pitch 180° Wafer-SMT TYPE

### Reference Informations:

- \*Material:Pin:Brass/Tin over Nickel  
Insulator:Nylon 6T,UL94V-0
- \*Mates with CJT A2012H-XP series Housing
- \*Color:Ivory

### Ordering Information:

- A2012WV-S-XP - \*\*\* - \*\*  
 1                      2                      3
- 1.Part No.
  - 2.Material:  
(Blank):Nylon 6T,UL94V-0  
GWT:Nylon 6T,UL94V-0,GWT 750 °C
  - 3.Finish:  
(blank):Tin over Nickel  
G:Gold over Nickel



### Ordering Information & Dimensions:

| PART NO. | Dimensions |       |       |
|----------|------------|-------|-------|
|          | A          | B     | C     |
| 2P       | 2.00       | 4.50  | 8.00  |
| 3P       | 4.00       | 6.50  | 10.00 |
| 4P       | 6.00       | 8.50  | 12.00 |
| 5P       | 8.00       | 10.50 | 14.00 |
| 6P       | 10.00      | 12.50 | 16.00 |
| 7P       | 12.00      | 14.50 | 18.00 |
| 8P       | 14.00      | 16.50 | 20.00 |
| 9P       | 16.00      | 18.50 | 22.00 |
| 10P      | 18.00      | 20.50 | 24.00 |
| 11P      | 20.00      | 22.50 | 26.00 |
| 12P      | 22.00      | 24.50 | 28.00 |
| 13P      | 24.00      | 26.50 | 30.00 |
| 14P      | 26.00      | 28.50 | 32.00 |
| 15P      | 28.00      | 30.50 | 34.00 |
| 16P      | 30.00      | 32.50 | 36.00 |

Unit: mm

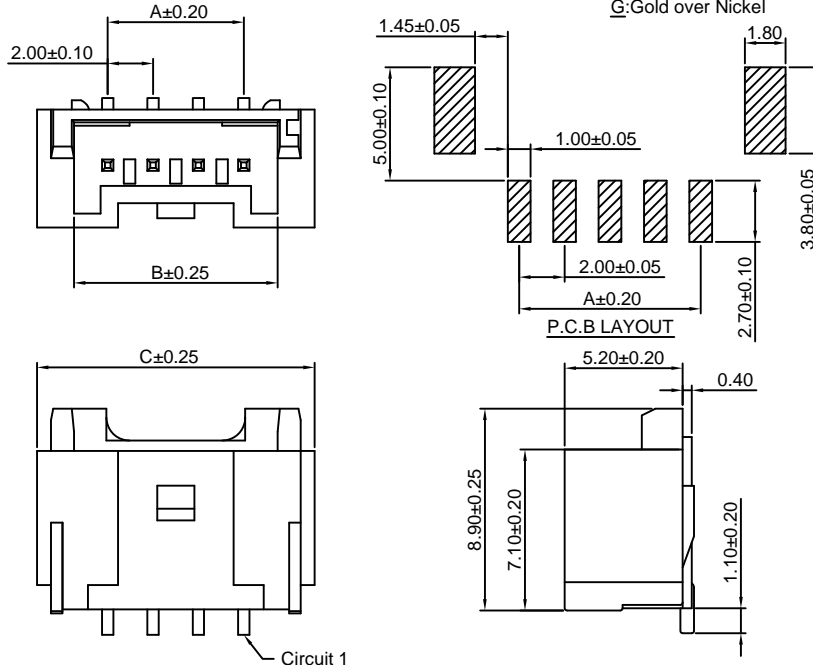
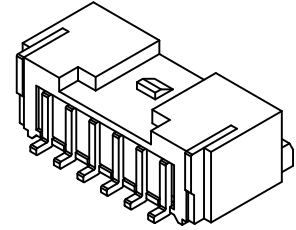
### A2012WR-S-XP

2.00mm pitch 90° Wafer-SMT TYPE

**Reference Informations:**

- \*Material:Pin:Brass/Tin over Nickel  
Insulator:Nylon 6T,UL94V-0
- \*Mates with CJT A2012H-XP series Housing
- \*Color:Ivory

Ordering Information:  
A2012WR-S-XP - \*\*\* - \*\*  
1 2 3  
1.Part No.  
2.Material:  
(Blank):Nylon 6T,UL94V-0  
GWT:Nylon 6T,UL94V-0,GWT 750 °C  
3.Finish:  
(blank):Tin over Nickel  
G:Gold over Nickel



Ordering Information & Dimensions:

| PART NO. | Dimensions |       |       |
|----------|------------|-------|-------|
|          | A          | B     | C     |
| 2P       | 2.00       | 4.50  | 8.00  |
| 3P       | 4.00       | 6.50  | 10.00 |
| 4P       | 6.00       | 8.50  | 12.00 |
| 5P       | 8.00       | 10.50 | 14.00 |
| 6P       | 10.00      | 12.50 | 16.00 |
| 7P       | 12.00      | 14.50 | 18.00 |
| 8P       | 14.00      | 16.50 | 20.00 |
| 9P       | 16.00      | 18.50 | 22.00 |
| 10P      | 18.00      | 20.50 | 24.00 |
| 11P      | 20.00      | 22.50 | 26.00 |
| 12P      | 22.00      | 24.50 | 28.00 |
| 13P      | 24.00      | 26.50 | 30.00 |
| 14P      | 26.00      | 28.50 | 32.00 |
| 15P      | 28.00      | 30.50 | 34.00 |
| 16P      | 30.00      | 32.50 | 36.00 |

Unit: mm

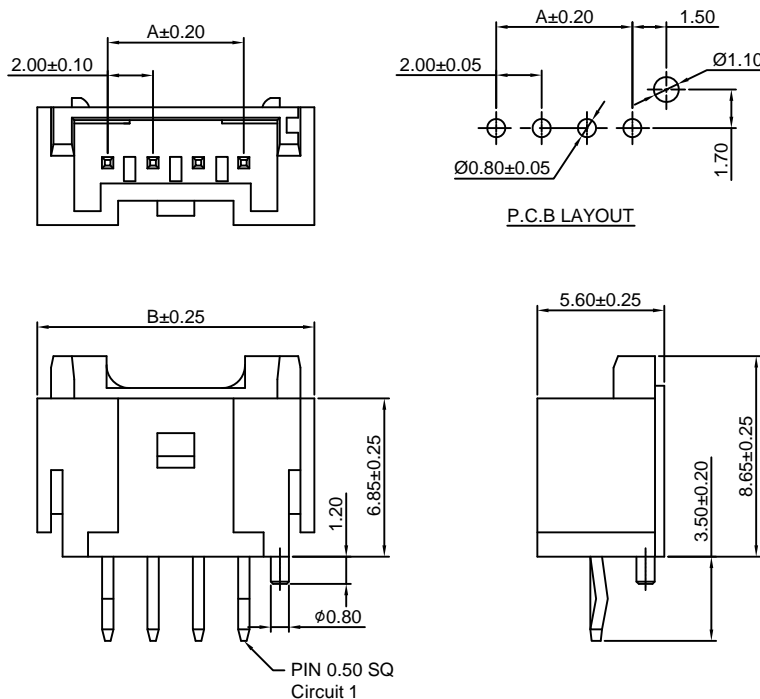
### A2012WV-F-XP

2.00mm pitch 180° Wafer

**Reference Informations:**

- \*Material:Pin:Brass/Tin over Nickel  
Insulator:Nylon 66,UL94V-0
- \*Mates with CJT A2012H-XP series Housing
- \*Color:Ivory

Ordering Information:  
A2012WV-F-XP - \*\*\* - \*\*  
1 2 3  
1.Part No.  
2.Material:  
(Blank):Nylon 66,UL94V-0  
GWT:Nylon 66,UL94V-0,GWT 750 °C  
3.Finish:  
(blank):Tin over Nickel  
G:Gold over Nickel



Ordering Information & Dimensions:

| PART NO. | Dimensions |       |
|----------|------------|-------|
|          | A          | B     |
| 2P       | 2.00       | 8.00  |
| 3P       | 4.00       | 10.00 |
| 4P       | 6.00       | 12.00 |
| 5P       | 8.00       | 14.00 |
| 6P       | 10.00      | 16.00 |
| 7P       | 12.00      | 18.00 |
| 8P       | 14.00      | 20.00 |
| 9P       | 16.00      | 22.00 |
| 10P      | 18.00      | 24.00 |
| 11P      | 20.00      | 26.00 |
| 12P      | 22.00      | 28.00 |
| 13P      | 24.00      | 30.00 |
| 14P      | 26.00      | 32.00 |
| 15P      | 28.00      | 34.00 |
| 16P      | 30.00      | 36.00 |

Unit: mm



# A2012 SERIES

2.00mm pitch wire to board connector

## A2012WVA-XP

2.00mm pitch 180° Wafer

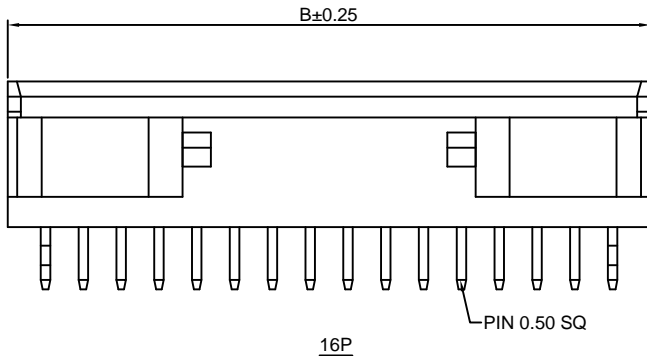
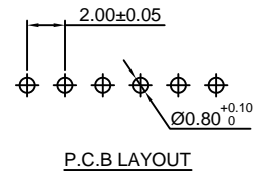
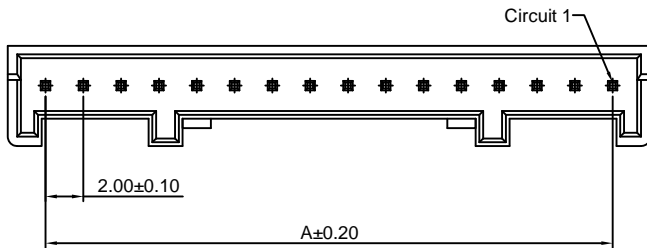
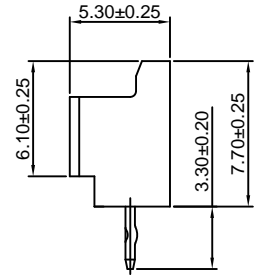
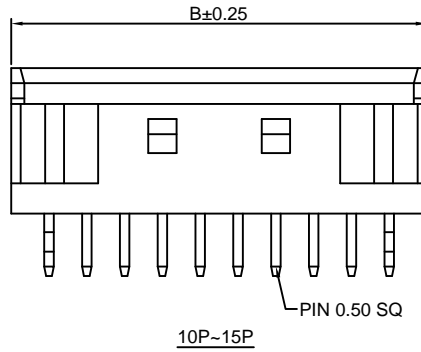
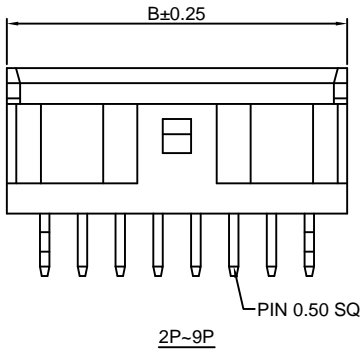
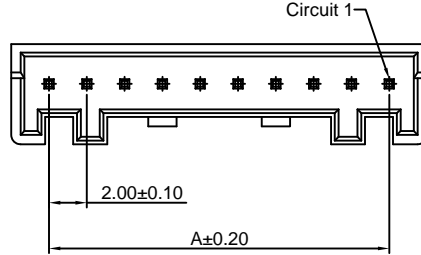
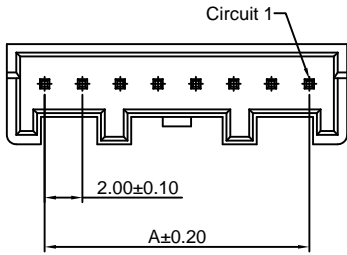
### Reference Informations:

- \*Material:Pin:Brass/Tin over Nickel  
Insulator:Nylon 66,UL94V-0
- \*Mates with CJT A2012H-XP series Housing
- \*Color:White

### Ordering Information:

A2012WVA-XP - <sup>\*\*\*</sup>/<sub>1</sub> - <sup>\*\*</sup>/<sub>2</sub> - <sup>\*\*</sup>/<sub>3</sub> - <sup>\*\*</sup>/<sub>4</sub>

- 1.Part No.
- 2.Material:  
(Blank):Nylon 66,UL94V-0  
GWT:Nylon 66,UL94V-0,GWT 750 °C
- 3.Color:  
(Blank):White  
BK:Black                      PK:Pink  
RD:Red                        YL:Yellow  
BL:Blue                       LY:Lemon yellow  
GN:Green                    VY:Vivid yellow  
OR:Orange                  LE:Light blue  
BR:Brown                    GY:Gray  
VI:Violet                     TR:Tomato red
- 4.Finish:  
(blank):Tin over Nickel  
G:Gold over Nickel



### Ordering Information & Dimensions:

| PART NO. | Dimensions |       |
|----------|------------|-------|
|          | A          | B     |
| 2P       | 2.00       | 6.00  |
| 3P       | 4.00       | 8.00  |
| 4P       | 6.00       | 10.00 |
| 5P       | 8.00       | 12.00 |
| 6P       | 10.00      | 14.00 |
| 7P       | 12.00      | 16.00 |
| 8P       | 14.00      | 18.00 |
| 9P       | 16.00      | 20.00 |
| 10P      | 18.00      | 22.00 |
| 11P      | 20.00      | 24.00 |
| 12P      | 22.00      | 26.00 |
| 13P      | 24.00      | 28.00 |
| 14P      | 26.00      | 30.00 |
| 15P      | 28.00      | 32.00 |
| 16P      | 30.00      | 34.00 |

Unit: mm

# CJT<sub>CONN</sub> A2012 SERIES

2.00mm pitch wire to board connector

## A2012WRA-XP

2.00mm pitch 90° Wafer

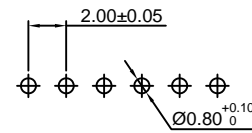
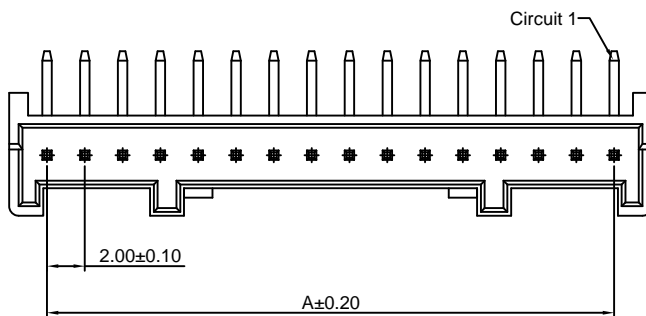
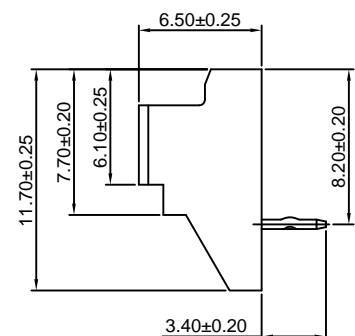
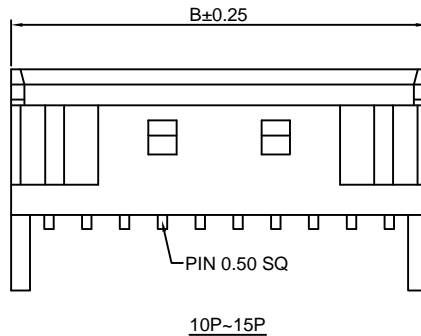
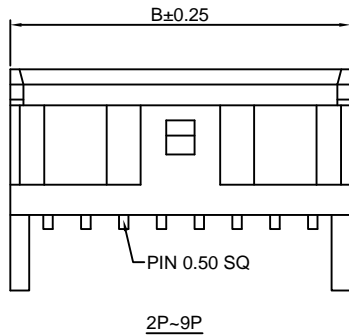
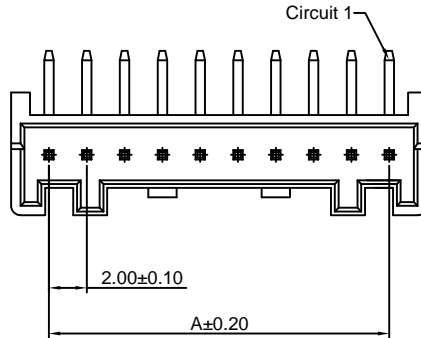
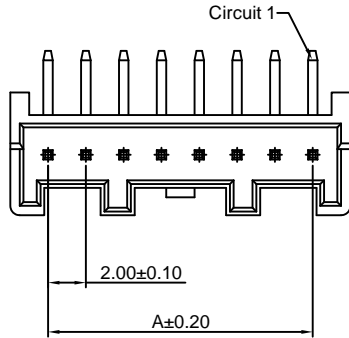
### Reference Informations:

- \*Material:Pin:Brass/Tin over Nickel  
Insulator:Nylon 66,UL94V-0
- \*Mates with CJT A2012H-XP series Housing
- \*Color:White

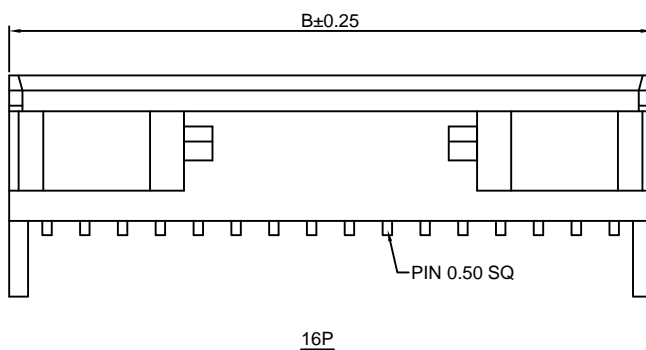
### Ordering Information:

A2012WRA-XP - \*\*\* - \*\* - \*\*  
1 2 3 4

- 1.Part No.
- 2.Material:  
(Blank):Nylon 66,UL94V-0  
GWT:Nylon 66,UL94V-0,GWT 750 °C
- 3.Color:  
(Blank):White  
BK:Black            PK:Pink  
RD:Red             YL:Yellow  
BL:Blue            LY:Lemon yellow  
GN:Green          VY:Vivid yellow  
OR:Orange        LE:Light blue  
BR:Brown         GY:Gray  
VI:Violet         TR:Tomato red
- 4.Finish:  
(blank):Tin over Nickel  
G:Gold over Nickel



P.C.B LAYOUT



### Ordering Information & Dimensions:

| PART NO. | Dimensions |       |
|----------|------------|-------|
|          | A          | B     |
| 2P       | 2.00       | 6.00  |
| 3P       | 4.00       | 8.00  |
| 4P       | 6.00       | 10.00 |
| 5P       | 8.00       | 12.00 |
| 6P       | 10.00      | 14.00 |
| 7P       | 12.00      | 16.00 |
| 8P       | 14.00      | 18.00 |
| 9P       | 16.00      | 20.00 |
| 10P      | 18.00      | 22.00 |
| 11P      | 20.00      | 24.00 |
| 12P      | 22.00      | 26.00 |
| 13P      | 24.00      | 28.00 |
| 14P      | 26.00      | 30.00 |
| 15P      | 28.00      | 32.00 |
| 16P      | 30.00      | 34.00 |

Unit: mm



# A2012 SERIES

2.00mm pitch wire to board connector

## A2012WVA-F-XP

2.00mm pitch 180° Wafer

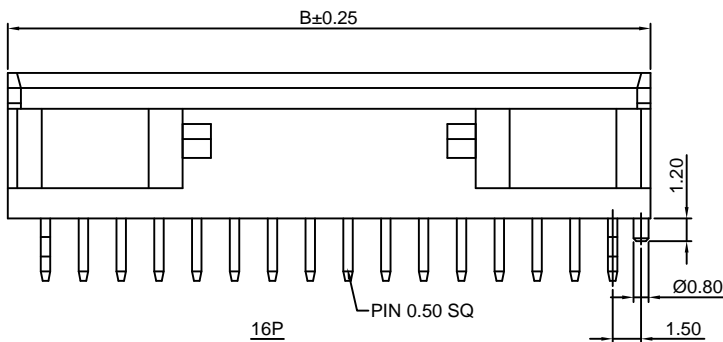
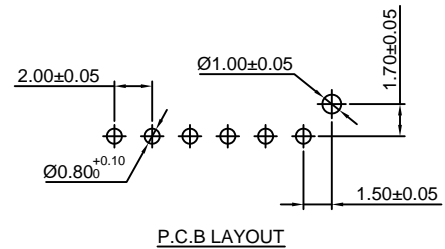
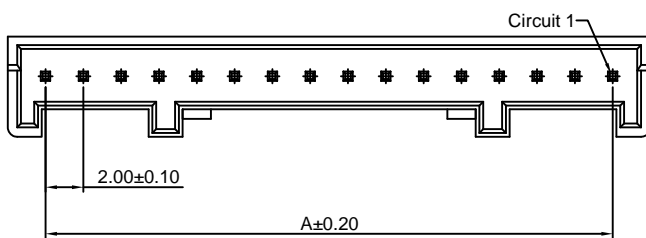
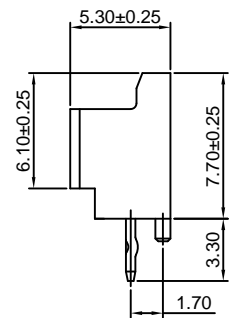
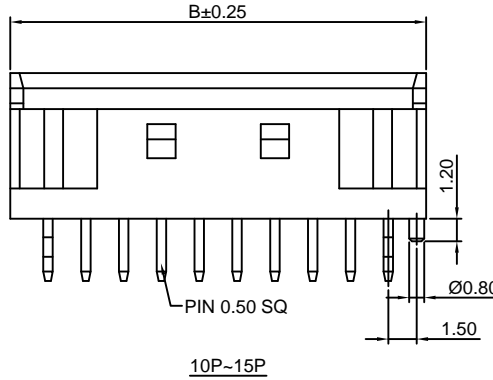
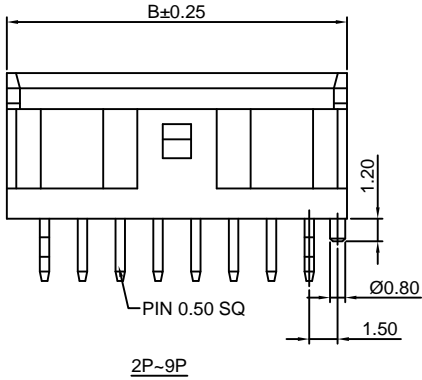
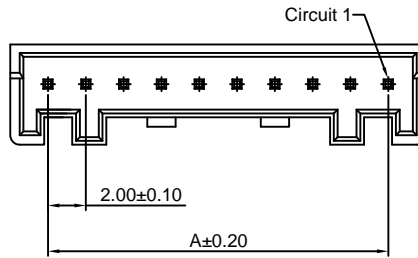
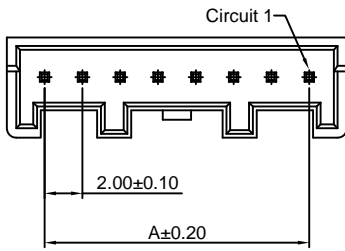
### Reference Informations:

- \*Material:Pin:Brass/Tin over Nickel  
Insulator:Nylon 66,UL94V-0
- \*Mates with CJT A2012H-XP series Housing
- \*Color:White

### Ordering Information:

A2012WVA-F-XP - \*\*\* - \*\* - \*\*  
1 2 3 4

- Part No.
- Material:  
(Blank):Nylon 66,UL94V-0  
GWT:Nylon 66,UL94V-0,GWT 750°C
- Color:  
(Blank):White  
BK:Black PK:Pink  
RD:Red YL:Yellow  
BL:Blue LY:Lemon yellow  
GN:Green VY:Vivid yellow  
OR:Orange LE:Light blue  
BR:Brown GY:Gray  
VI:Violet TR:Tomato red
- Finish:  
(blank):Tin over Nickel  
G:Gold over Nickel



### Ordering Information & Dimensions:

| PART NO. | Dimensions |       |
|----------|------------|-------|
|          | A          | B     |
| 2P       | 2.00       | 6.00  |
| 3P       | 4.00       | 8.00  |
| 4P       | 6.00       | 10.00 |
| 5P       | 8.00       | 12.00 |
| 6P       | 10.00      | 14.00 |
| 7P       | 12.00      | 16.00 |
| 8P       | 14.00      | 18.00 |
| 9P       | 16.00      | 20.00 |
| 10P      | 18.00      | 22.00 |
| 11P      | 20.00      | 24.00 |
| 12P      | 22.00      | 26.00 |
| 13P      | 24.00      | 28.00 |
| 14P      | 26.00      | 30.00 |
| 15P      | 28.00      | 32.00 |
| 16P      | 30.00      | 34.00 |

Unit: mm



# CJT<sub>CONN</sub> A2012 SERIES

2.00mm pitch wire to board connector

## A2012WRA-F-XP

2.00mm pitch 90° Wafer

### Reference Informations:

- \*Material:Pin:Brass/Tin over Nickel  
Insulator:Nylon 66,UL94V-0
- \*Mates with CJT A2012H-XP series Housing
- \*Color:White

### Ordering Information:

A2012WRA-F-XP - \*\*\* - \*\* - \*\*  
1 2 3 4

### 1.Part No.

### 2.Material:

(Blank):Nylon 66,UL94V-0

GWT:Nylon 66,UL94V-0,GWT 750 °C

### 3.Color:

(Blank):White

BK:Black

RD:Red

BL:Blue

GN:Green

OR:Orange

BR:Brown

VI:Violet

PK:Pink

YL:Yellow

LY:Lemon yellow

VY:Vivid yellow

LE:Light blue

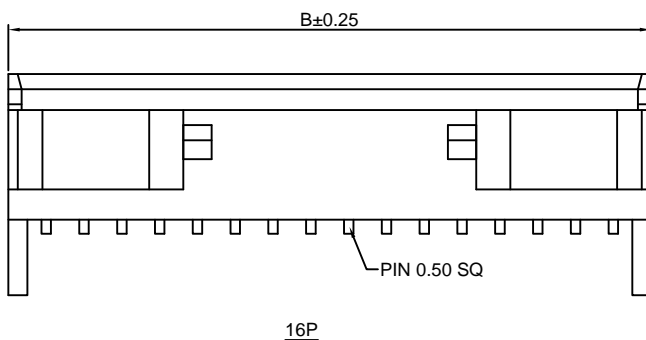
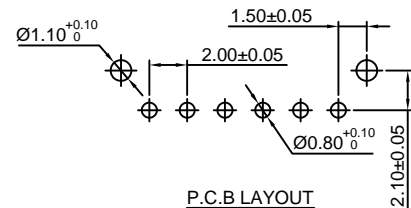
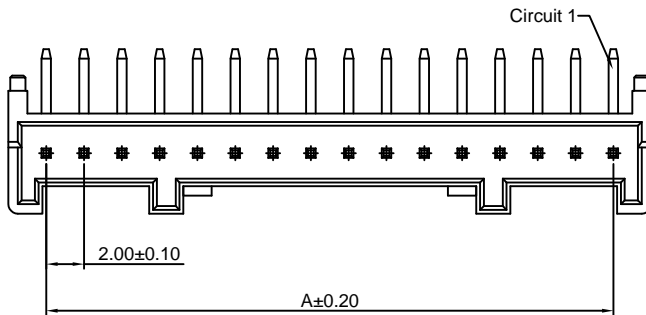
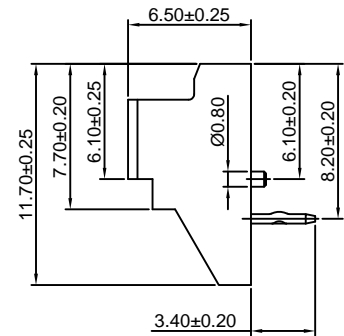
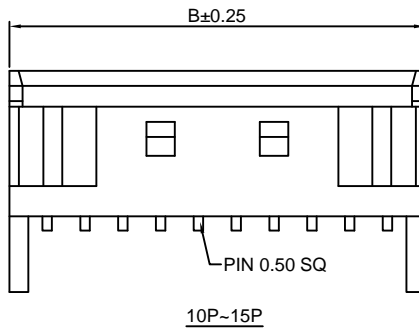
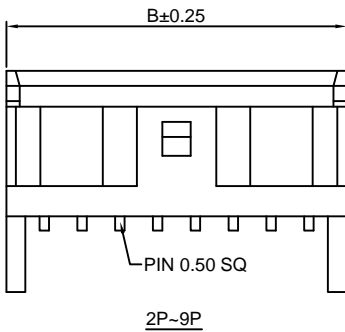
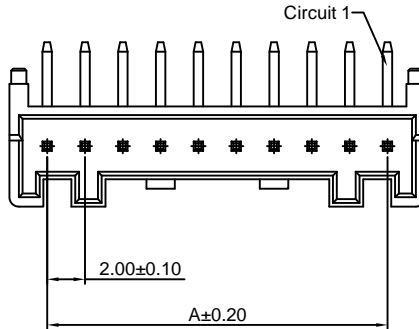
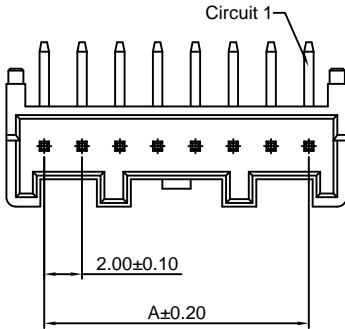
GY:Gray

TR:Tomato red

### 4.Finish:

(blank):Tin over Nickel

G:Gold over Nickel



### Ordering Information & Dimensions:

| PART NO. | Dimensions |       |
|----------|------------|-------|
|          | A          | B     |
| 2P       | 2.00       | 6.00  |
| 3P       | 4.00       | 8.00  |
| 4P       | 6.00       | 10.00 |
| 5P       | 8.00       | 12.00 |
| 6P       | 10.00      | 14.00 |
| 7P       | 12.00      | 16.00 |
| 8P       | 14.00      | 18.00 |
| 9P       | 16.00      | 20.00 |
| 10P      | 18.00      | 22.00 |
| 11P      | 20.00      | 24.00 |
| 12P      | 22.00      | 26.00 |
| 13P      | 24.00      | 28.00 |
| 14P      | 26.00      | 30.00 |
| 15P      | 28.00      | 32.00 |
| 16P      | 30.00      | 34.00 |

Unit: mm



# A2012 SERIES

2.00mm pitch wire to board connector

## A2012WV-2xXP

2.00mm pitch 180° Dual Row Wafer

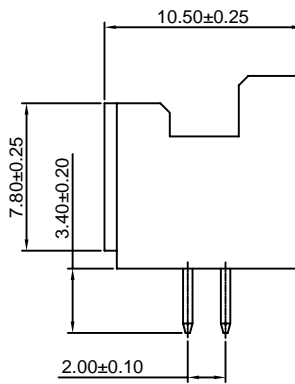
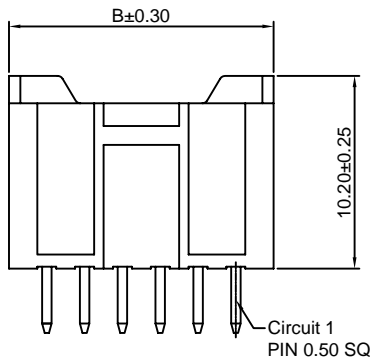
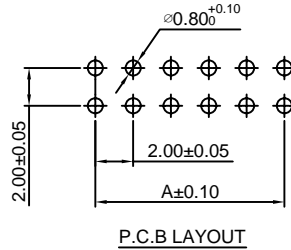
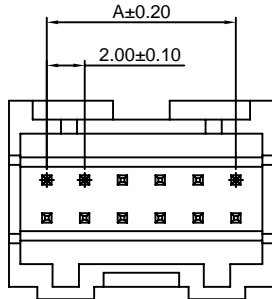
**Reference Informations:**

- \*Material:Pin:Phosphor Bronze/Tin over Nickel  
Insulator:Nylon 66,UL94V-0
- \*Mates with CJT A2012HD-2xXP series Dual Row Housing
- \*Color:Ivory

**Ordering Information:**

A2012WV-2xXP - \*\*\* - \*\*  
1 2 3

- Part No.
- Material:  
(Blank):Nylon 66,UL94V-0  
GWT:Nylon 66,UL94V-0,GWT 750 °C
- Finish:  
(blank):Tin over Nickel  
G:Gold over Nickel



**Ordering Information & Dimensions:**

| PART NO. | Dimensions |       |
|----------|------------|-------|
|          | A          | B     |
| 2x5P     | 8.00       | 12.00 |
| 2x6P     | 10.00      | 14.00 |
| 2x7P     | 12.00      | 16.00 |
| 2x8P     | 14.00      | 18.00 |
| 2x9P     | 16.00      | 20.00 |
| 2x10P    | 18.00      | 22.00 |
| 2x11P    | 20.00      | 24.00 |
| 2x12P    | 22.00      | 26.00 |
| 2x20P    | 38.00      | 42.00 |

Unit: mm

## A2012WV-F-2xXP

2.00mm pitch 180° Dual Row Wafer

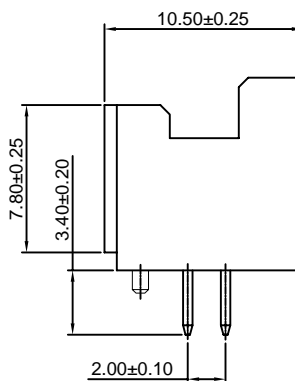
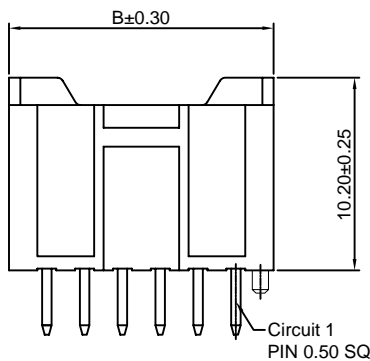
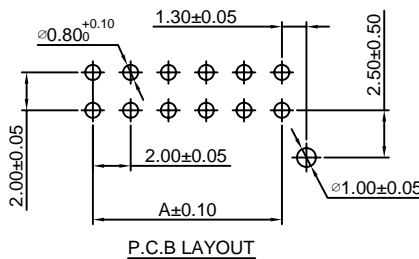
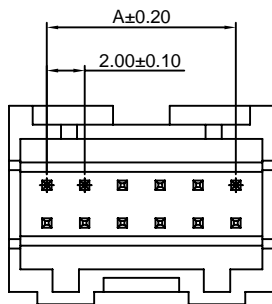
**Reference Informations:**

- \*Material:Pin:Phosphor Bronze/Tin over Nickel  
Insulator:Nylon 66,UL94V-0
- \*Mates with CJT A2012HD-2xXP series Dual Row Housing
- \*Color:Ivory

**Ordering Information:**

A2012WV-F-2xXP - \*\*\* - \*\*  
1 2 3

- Part No.
- Material:  
(Blank):Nylon 66,UL94V-0  
GWT:Nylon 66,UL94V-0,GWT 750 °C
- Finish:  
(blank):Tin over Nickel  
G:Gold over Nickel



**Ordering Information & Dimensions:**

| PART NO. | Dimensions |       |
|----------|------------|-------|
|          | A          | B     |
| 2x5P     | 8.00       | 12.00 |
| 2x6P     | 10.00      | 14.00 |
| 2x7P     | 12.00      | 16.00 |
| 2x8P     | 14.00      | 18.00 |
| 2x9P     | 16.00      | 20.00 |
| 2x10P    | 18.00      | 22.00 |
| 2x11P    | 20.00      | 24.00 |
| 2x12P    | 22.00      | 26.00 |
| 2x20P    | 38.00      | 42.00 |

Unit: mm

# CJT<sub>CONN</sub> A2012 SERIES

2.00mm pitch wire to board connector

## A2012WR-F-2xXP

2.00mm pitch 90° Dual Row Wafer

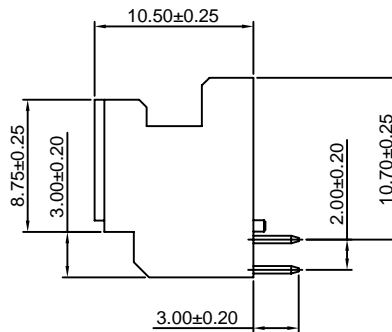
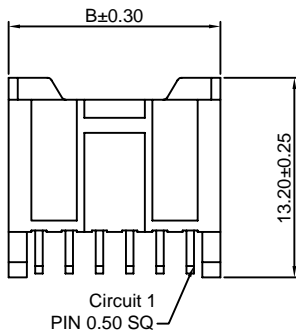
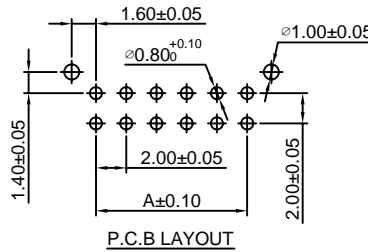
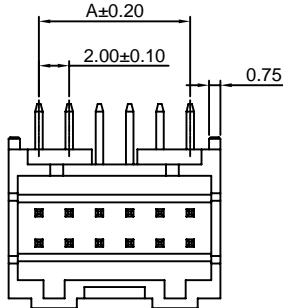
### Reference Informations:

- \*Material: Pin: Phosphor Bronze/Tin over Nickel  
Insulator: Nylon 66, UL94V-0
- \*Mates with CJT A2012HD-2xXP series Dual Row Housing
- \*Color: White

### Ordering Information:

A2012WR-F-2xXP - \*\*\* - \*\*  
1 2 3

1. Part No.
2. Material:  
(Blank): Nylon 66, UL94V-0  
GWT: Nylon 66, UL94V-0, GWT 750°C
3. Finish:  
(blank): Tin over Nickel  
G: Gold over Nickel



### Ordering Information & Dimensions:

| PART NO. | Dimensions |       |
|----------|------------|-------|
|          | A          | B     |
| 2x5P     | 8.00       | 12.00 |
| 2x6P     | 10.00      | 14.00 |
| 2x7P     | 12.00      | 16.00 |
| 2x8P     | 14.00      | 18.00 |
| 2x9P     | 16.00      | 20.00 |
| 2x10P    | 18.00      | 22.00 |
| 2x11P    | 20.00      | 24.00 |
| 2x12P    | 22.00      | 26.00 |
| 2x20P    | 38.00      | 42.00 |

Unit: mm

## X-ON Electronics

Largest Supplier of Electrical and Electronic Components

*Click to view similar products for [Headers & Wire Housings](#) category:*

*Click to view products by [Changjiang](#) manufacturer:*

Other Similar products are found below :

[95000-104TRLF](#) [10135584-644402LF](#) [DF62W-EP2022PCA](#) [95000-106TRLF](#) [DF62W-2022SCA](#) [DF62W-EP2022PC](#) [2203348](#) [DF62W-2022SC](#) [1084018](#) [1029039](#) [1084017](#) [802-10-012-10-002000](#) [1112640](#) [1112639](#) [891-007-9SS-BST1T](#) [000-34000](#) [0008550134](#) [0009482033](#) [0009507031](#) [57102-F02-18ULF](#) [57102-S06-03LF](#) [57202-S52-04LF](#) [PCN6-15S-2.5E](#) [0039019024](#) [58102-G61-06LF](#) [582553-1](#) [0009485154](#) [0009508121](#) [0022285053](#) [0050291907](#) [018731A](#) [LY20-4P-DT1-P1E-BR](#) [02.125.8002.8](#) [60101931](#) [60598-1 \(Cut Strip\)](#) [M1625-3R/100](#) [61062-3](#) [61082-181009](#) [CSU011177004](#) [636-1427](#) [638009-1](#) [641938-9](#) [641991-4](#) [644168-1](#) [644827-2](#) [647662-1](#) [65039-019ELF](#) [65692-001LF](#) [65781-018](#) [65781-047](#)