

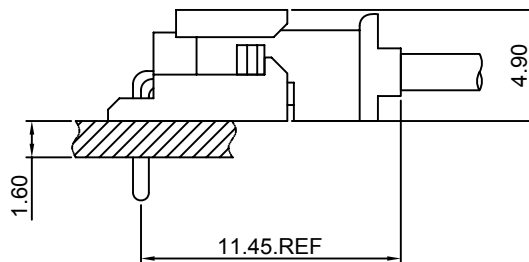
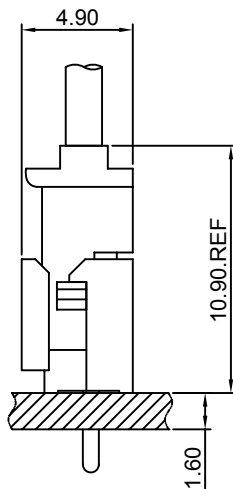
Specifications

- Current rating:3A AC,DC
- Voltage rating:250V AC,DC
- Temperature range:-40°C~+105°C
- Contact resistance:20mΩMax.
- Insulation resistance:1000MΩMin.
- Withstanding voltage:1000V AC/minute
- *Compliant with RoHS and REACH*
- *Meet the HF/Halogen Free,need to customize*
- *Contact CJT for details*

Standards



Assembly layout

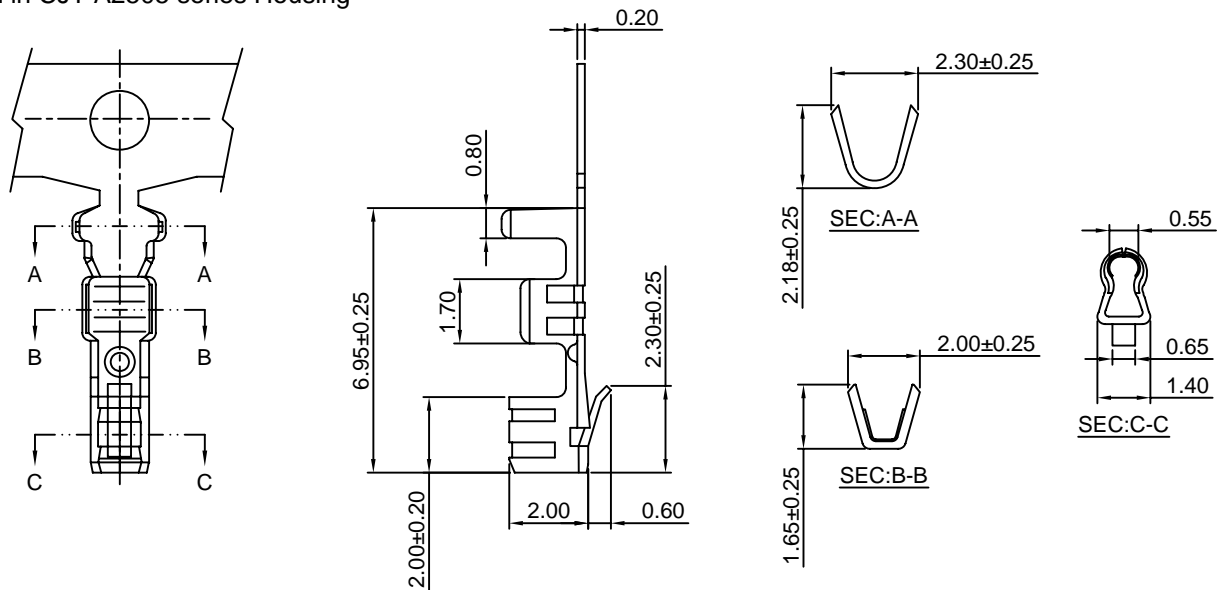


A2505-T

2.50mm pitch Crimp Terminal

Reference Informations:

*Used in CJT A2505 series Housing



Ordering information & Specifications:

Unit:mm

Part NO	Wire Range	Insulation O.D.	Material	Finish	Qty/reel
A2505-TP	AWG#22-#28	1.90mm(max)	Phosphor Bronze	Tin over Nickel	10,000 PCS
A2505-GP	AWG#22-#28	1.90mm(max)	Phosphor Bronze	Gold over Nickel	10,000 PCS

Optional Gold plating available but MOQ requested

A2505H

2.50mm pitch Housing

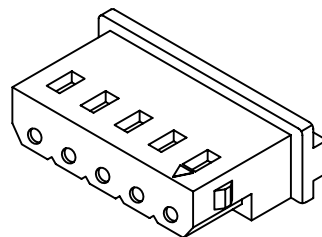
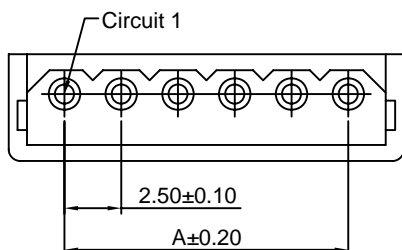
Reference Informations:

*Material:Nylon 66,UL94V-0

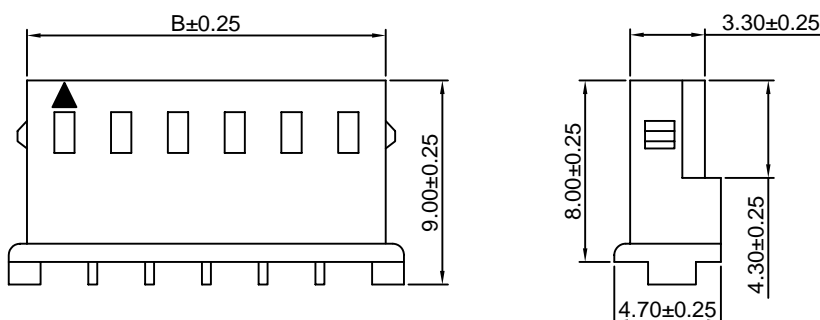
*Suitable CJT A2505 series Terminal

*Mates with CJT A2505 series Wafer

*Color:Beige



Ordering Information & Dimensions



PART NO.	Dimensions	
	A	B
A2505H-2P	2.50	5.80
A2505H-3P	5.00	8.30
A2505H-4P	7.50	10.80
A2505H-5P	10.00	13.30
A2505H-6P	12.50	15.80
A2505H-7P	15.00	18.30
A2505H-8P	17.50	20.80
A2505H-9P	20.00	23.30
A2505H-10P	22.50	25.80
A2505H-11P	25.00	28.30
A2505H-12P	27.50	30.80
A2505H-13P	30.00	33.30
A2505H-14P	32.50	35.80
A2505H-15P	35.00	38.30
A2505H-16P	37.00	40.80
A2505H-17P	39.50	43.30
A2505H-18P	42.00	45.80
A2505H-19P	44.50	48.30
A2505H-20P	47.00	50.80

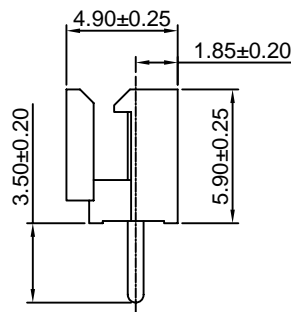
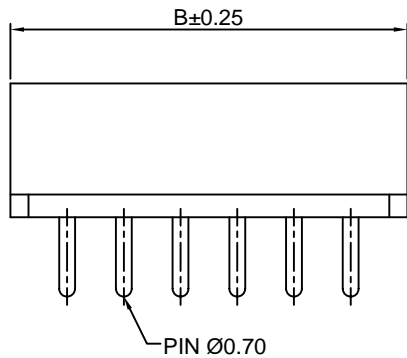
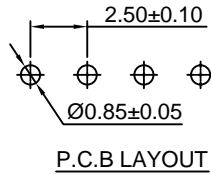
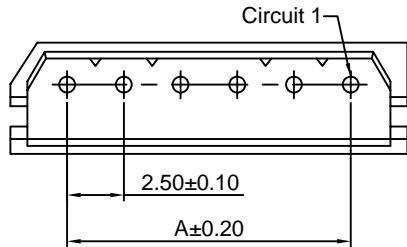
Unit: mm

A2505WV

2.50mm pitch 180° Wafer

Reference Informations:

- *Material:Pin:Brass/Tin over Nickel
Insulator:Nylon 66,UL94V-0
- *Mates with CJT A2505 series Housing
- *Color:Beige



Ordering Information & Dimensions

PART NO.	Dimensions	
	A	B
A2505WV-2P	2.50	7.50
A2505WV-3P	5.00	10.00
A2505WV-4P	7.50	12.50
A2505WV-5P	10.00	15.00
A2505WV-6P	12.50	17.50
A2505WV-7P	15.00	20.00
A2505WV-8P	17.50	22.50
A2505WV-9P	20.00	25.00
A2505WV-10P	22.50	27.50
A2505WV-11P	25.00	30.00
A2505WV-12P	27.50	32.50
A2505WV-13P	30.00	35.00
A2505WV-14P	32.50	37.50
A2505WV-15P	35.00	40.00
A2505WV-16P	37.50	42.50
A2505WV-17P	40.00	45.00
A2505WV-18P	42.50	47.50
A2505WV-19P	45.00	50.00
A2505WV-20P	47.50	52.50

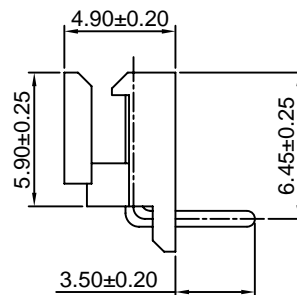
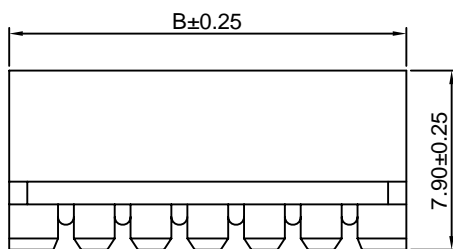
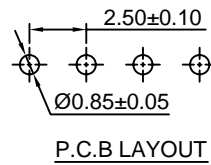
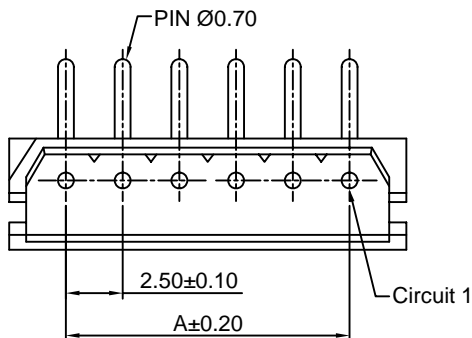
Unit: mm

A2505WR

2.50mm pitch 90° Wafer

Reference Informations:

- *Material:Pin:Brass/Tin over Nickel
Insulator:Nylon 66,UL94V-0
- *Mates with CJT A2505 series Housing
- *Color:Beige



Ordering Information & Dimensions

PART NO.	Dimensions	
	A	B
A2505WR-2P	2.50	7.50
A2505WR-3P	5.00	10.00
A2505WR-4P	7.50	12.50
A2505WR-5P	10.00	15.00
A2505WR-6P	12.50	17.50
A2505WR-7P	15.00	20.00
A2505WR-8P	17.50	22.50
A2505WR-9P	20.00	25.00
A2505WR-10P	22.50	27.50
A2505WR-11P	25.00	30.00
A2505WR-12P	27.50	32.50
A2505WR-13P	30.00	35.00
A2505WR-14P	32.50	37.50
A2505WR-15P	35.00	40.00
A2505WR-16P	37.50	42.50
A2505WR-17P	40.00	45.00
A2505WR-18P	42.50	47.50
A2505WR-19P	45.00	50.00
A2505WR-20P	47.50	52.50

Unit: mm

X-ON Electronics

Largest Supplier of Electrical and Electronic Components

Click to view similar products for [Headers & Wire Housings](#) category:

Click to view products by [Changjiang](#) manufacturer:

Other Similar products are found below :

[57102-F02-18ULF](#) [58102-G61-06LF](#) [0009485154](#) [009176003701906](#) [0050291907](#) [00-9021-0611-00-339](#) [02.125.8002.8](#) [609-3404](#) [61062-3](#)
[622-0430](#) [622-3653LF](#) [63453-116](#) [636-1030](#) [636-1427](#) [636-3427](#) [636-4007](#) [641938-9](#) [644827-2](#) [65495-038](#) [65692-001LF](#) [65781-018](#)
[65781-047](#) [65817-010LF](#) [65817-015LF](#) [66207-023LF](#) [67016-026LF](#) [67095-007LF](#) [68631-112](#) [68645-018](#) [68648-049](#) [699319-000](#)
[70.362.1628.0](#) [70-4210](#) [70-4226B](#) [70-4853B](#) [707-5020](#) [707-5028](#) [71.350.2428.0](#) [71961-016LF](#) [733-134](#) [754199-000](#) [760-3052](#) [787-8014-00](#)
[FCN-367T-T012/H](#) [80.063.4001.1](#) [800-90-001-10-001000](#) [800-90-010-10-002000](#) [801-43-002-10-013000](#) [801-43-006-10-002000](#)
[803-41-018-10-001000](#)