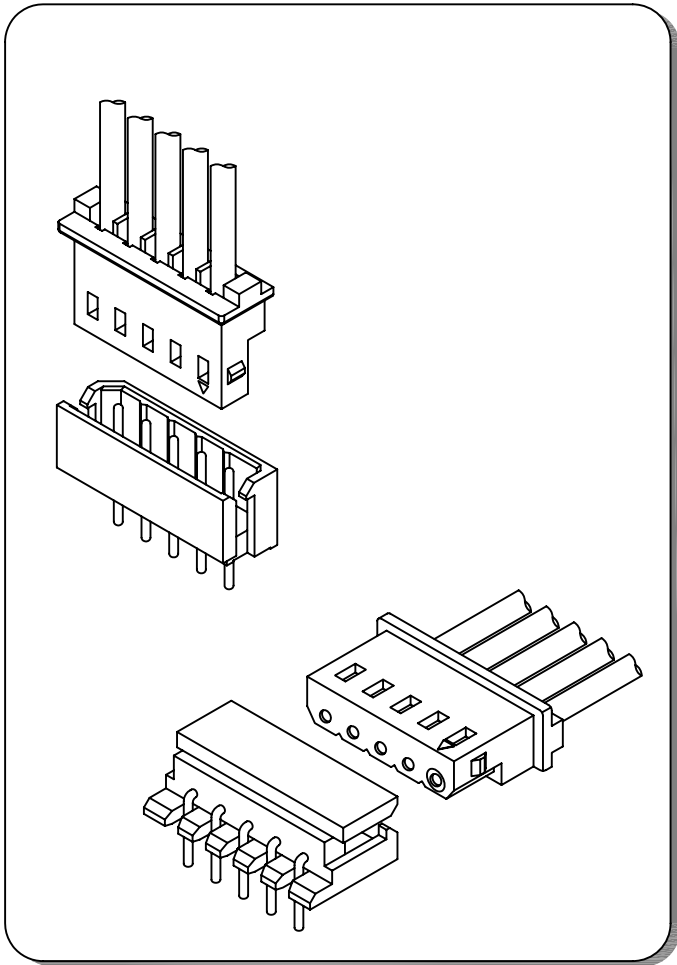


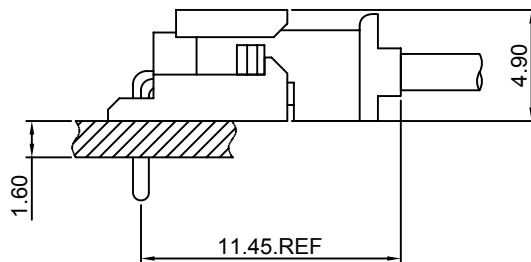
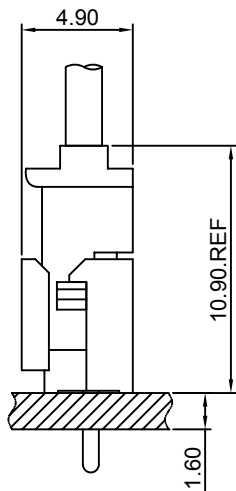
## Specifications

- Current rating:3A AC,DC
- Voltage rating:250V AC,DC
- Temperature range:-40°C~+105°C
- Contact resistance:20mΩMax.
- Insulation resistance:1000MΩMin.
- Withstanding voltage:1000V AC/minute
- \*Compliant with RoHS and REACH\*
- \*Meet the HF/Halogen Free,need to customize\*
- \*Contact CJT for details\*

## Standards



## Assembly layout

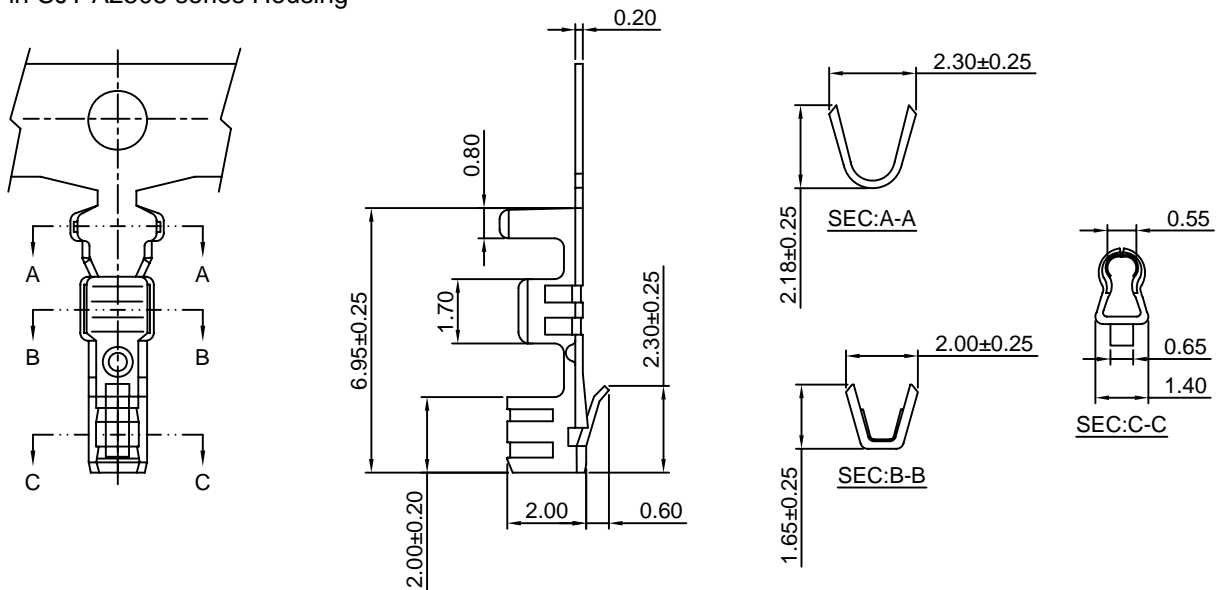


### A2505-T

2.50mm pitch Crimp Terminal

#### Reference Informations:

\*Used in CJT A2505 series Housing



Ordering information & Specifications:

Unit:mm

| Part NO  | Wire Range | Insulation O.D. | Material        | Finish           | Qty/reel   |
|----------|------------|-----------------|-----------------|------------------|------------|
| A2505-TP | AWG#22-#28 | 1.90mm(max)     | Phosphor Bronze | Tin over Nickel  | 10,000 PCS |
| A2505-GP | AWG#22-#28 | 1.90mm(max)     | Phosphor Bronze | Gold over Nickel | 10,000 PCS |

Optional Gold plating available but MOQ requested

### A2505H

2.50mm pitch Housing

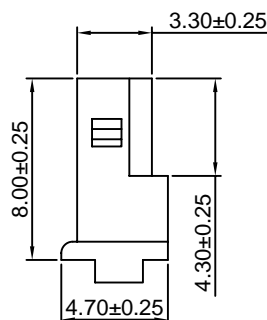
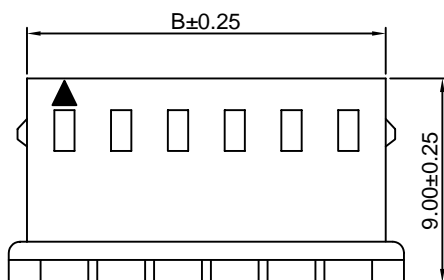
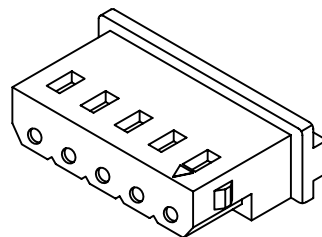
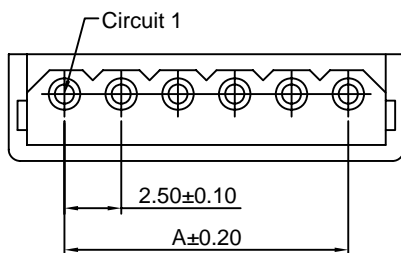
#### Reference Informations:

\*Material:Nylon 66,UL94V-0

\*Suitable CJT A2505 series Terminal

\*Mates with CJT A2505 series Wafer

\*Color:Beige



Ordering Information & Dimensions

| PART NO.   | Dimensions |       |
|------------|------------|-------|
|            | A          | B     |
| A2505H-2P  | 2.50       | 5.80  |
| A2505H-3P  | 5.00       | 8.30  |
| A2505H-4P  | 7.50       | 10.80 |
| A2505H-5P  | 10.00      | 13.30 |
| A2505H-6P  | 12.50      | 15.80 |
| A2505H-7P  | 15.00      | 18.30 |
| A2505H-8P  | 17.50      | 20.80 |
| A2505H-9P  | 20.00      | 23.30 |
| A2505H-10P | 22.50      | 25.80 |
| A2505H-11P | 25.00      | 28.30 |
| A2505H-12P | 27.50      | 30.80 |
| A2505H-13P | 30.00      | 33.30 |
| A2505H-14P | 32.50      | 35.80 |
| A2505H-15P | 35.00      | 38.30 |
| A2505H-16P | 37.00      | 40.80 |
| A2505H-17P | 39.50      | 43.30 |
| A2505H-18P | 42.00      | 45.80 |
| A2505H-19P | 44.50      | 48.30 |
| A2505H-20P | 47.00      | 50.80 |

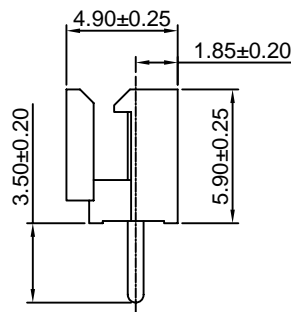
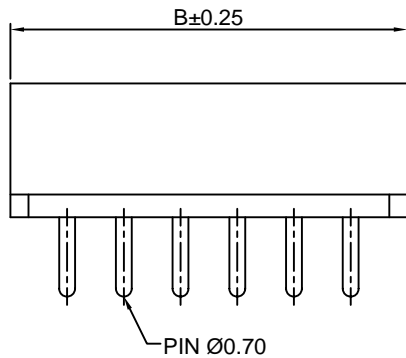
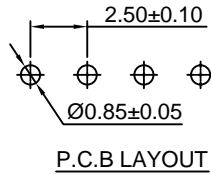
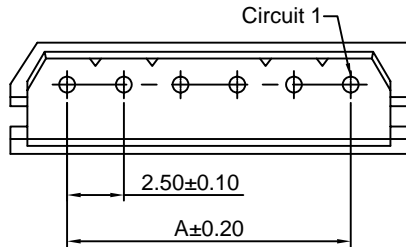
Unit: mm

### A2505WV

2.50mm pitch 180° Wafer

#### Reference Informations:

- \*Material:Pin:Brass/Tin over Nickel  
Insulator:Nylon 66,UL94V-0
- \*Mates with CJT A2505 series Housing
- \*Color:Beige



#### Ordering Information & Dimensions

| PART NO.    | Dimensions |       |
|-------------|------------|-------|
|             | A          | B     |
| A2505WV-2P  | 2.50       | 7.50  |
| A2505WV-3P  | 5.00       | 10.00 |
| A2505WV-4P  | 7.50       | 12.50 |
| A2505WV-5P  | 10.00      | 15.00 |
| A2505WV-6P  | 12.50      | 17.50 |
| A2505WV-7P  | 15.00      | 20.00 |
| A2505WV-8P  | 17.50      | 22.50 |
| A2505WV-9P  | 20.00      | 25.00 |
| A2505WV-10P | 22.50      | 27.50 |
| A2505WV-11P | 25.00      | 30.00 |
| A2505WV-12P | 27.50      | 32.50 |
| A2505WV-13P | 30.00      | 35.00 |
| A2505WV-14P | 32.50      | 37.50 |
| A2505WV-15P | 35.00      | 40.00 |
| A2505WV-16P | 37.50      | 42.50 |
| A2505WV-17P | 40.00      | 45.00 |
| A2505WV-18P | 42.50      | 47.50 |
| A2505WV-19P | 45.00      | 50.00 |
| A2505WV-20P | 47.50      | 52.50 |

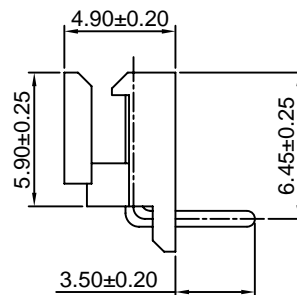
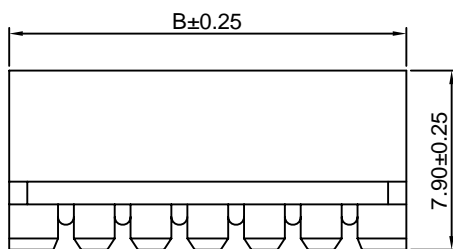
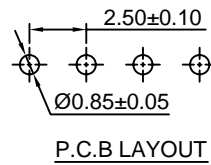
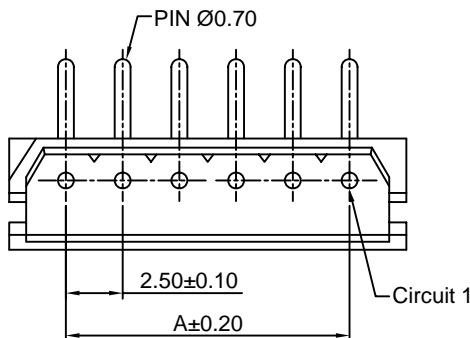
Unit: mm

### A2505WR

2.50mm pitch 90° Wafer

#### Reference Informations:

- \*Material:Pin:Brass/Tin over Nickel  
Insulator:Nylon 66,UL94V-0
- \*Mates with CJT A2505 series Housing
- \*Color:Beige



#### Ordering Information & Dimensions

| PART NO.    | Dimensions |       |
|-------------|------------|-------|
|             | A          | B     |
| A2505WR-2P  | 2.50       | 7.50  |
| A2505WR-3P  | 5.00       | 10.00 |
| A2505WR-4P  | 7.50       | 12.50 |
| A2505WR-5P  | 10.00      | 15.00 |
| A2505WR-6P  | 12.50      | 17.50 |
| A2505WR-7P  | 15.00      | 20.00 |
| A2505WR-8P  | 17.50      | 22.50 |
| A2505WR-9P  | 20.00      | 25.00 |
| A2505WR-10P | 22.50      | 27.50 |
| A2505WR-11P | 25.00      | 30.00 |
| A2505WR-12P | 27.50      | 32.50 |
| A2505WR-13P | 30.00      | 35.00 |
| A2505WR-14P | 32.50      | 37.50 |
| A2505WR-15P | 35.00      | 40.00 |
| A2505WR-16P | 37.50      | 42.50 |
| A2505WR-17P | 40.00      | 45.00 |
| A2505WR-18P | 42.50      | 47.50 |
| A2505WR-19P | 45.00      | 50.00 |
| A2505WR-20P | 47.50      | 52.50 |

Unit: mm

## X-ON Electronics

Largest Supplier of Electrical and Electronic Components

*Click to view similar products for [Headers & Wire Housings](#) category:*

*Click to view products by [Changjiang](#) manufacturer:*

Other Similar products are found below :

[57102-F02-18ULF](#) [58102-G61-06LF](#) [0009485154](#) [009176003701906](#) [0050291907](#) [02.125.8002.8](#) [609-3404](#) [61062-3](#) [622-0430](#) [622-3653LF](#)  
[63453-116](#) [636-1030](#) [636-1427](#) [636-3427](#) [636-4007](#) [641938-9](#) [644827-2](#) [65495-038](#) [65692-001LF](#) [65781-018](#) [65781-047](#) [65817-010LF](#)  
[65817-015LF](#) [66207-023LF](#) [67016-026LF](#) [67095-007LF](#) [68631-112](#) [68645-018](#) [68648-049](#) [699319-000](#) [70.362.1628.0](#) [70-4210](#) [70-4226B](#)  
[70-4853B](#) [707-5020](#) [707-5028](#) [71.350.2428.0](#) [71961-016LF](#) [733-134](#) [754199-000](#) [760-3052](#) [787-8014-00](#) [FCN-367T-T012/H](#) [80.063.4001.1](#)  
[800-90-001-10-001000](#) [800-90-010-10-002000](#) [801-43-002-10-013000](#) [801-43-006-10-002000](#) [803-41-018-10-001000](#) [803-43-014-20-](#)  
[001000](#)