

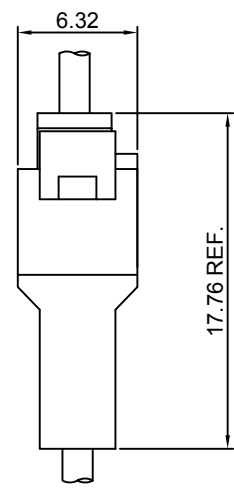
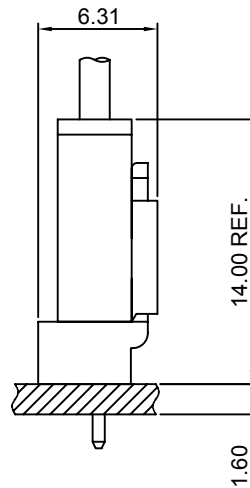
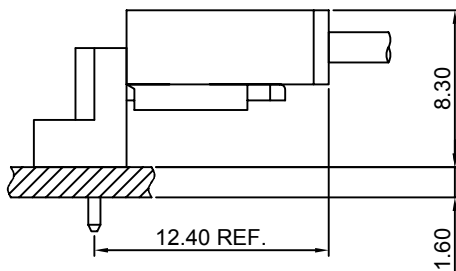
Specifications

- Current rating:3A AC,DC
- Voltage rating:250V AC,DC
- Temperature range:-40°C~+105°C
- Contact resistance:20mΩ Max.
- Insulation resistance:1000MΩ Min.
- Withstanding voltage:1000V AC/minute
- *Compliant with RoHS and REACH*
- *Meet the HF/Halogen Free,need to customize*
- *Contact CJT for details*

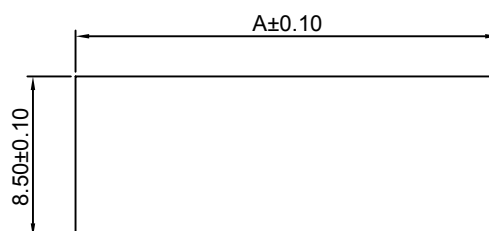
Standards



Assembly layout



Panel hole layout



PART NO.	Dimensions
	A
C2504HM-2P	12.40
C2504HM-3P	14.90
C2504HM-4P	17.40
C2504HM-5P	19.90
C2504HM-6P	22.40
C2504HM-7P	24.90
C2504HM-8P	27.40
C2504HM-9P	29.90
C2504HM-10P	32.40
C2504HM-11P	34.90
C2504HM-12P	37.40

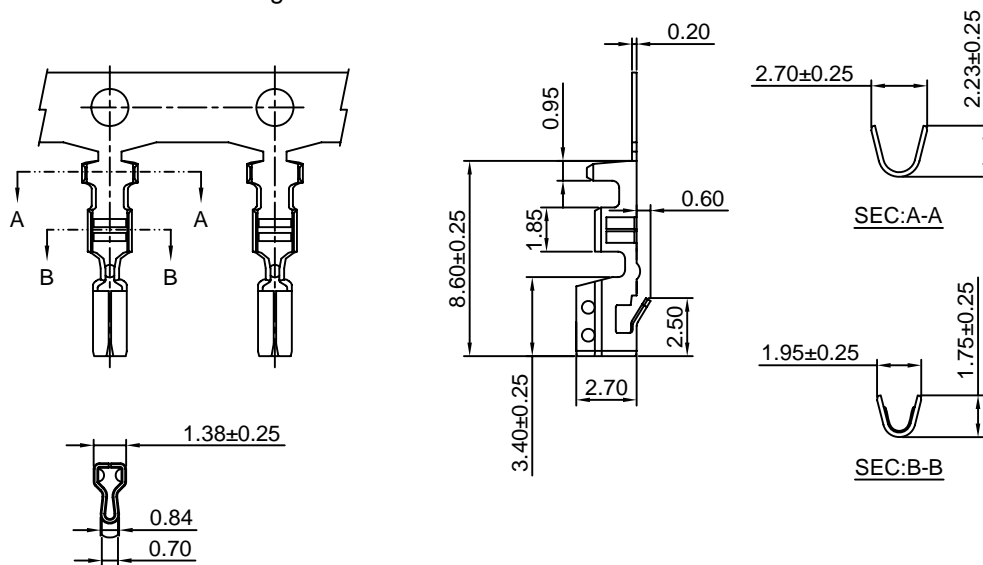
Unit:mm

C2504F-T

2.50mm pitch Crimp Terminal

Reference Informations:

*Used in CJT C2504HF series Housing


Ordering information & Specifications:

Unit:mm

Part NO.	Wire Range	Insulation O.D.	Material	Finish	Qty/reel
C2504F-TB	AWG#22-#28	1.90mm(max)	Brass	Tin over Nickel	10,000 PCS
C2504F-TP	AWG#22-#28	1.90mm(max)	Phosphor Bronze	Tin over Nickel	10,000 PCS
C2504F-GB	AWG#22-#28	1.90mm(max)	Brass	Gold over Nickel	10,000 PCS
C2504F-GP	AWG#22-#28	1.90mm(max)	Phosphor Bronze	Gold over Nickel	10,000 PCS

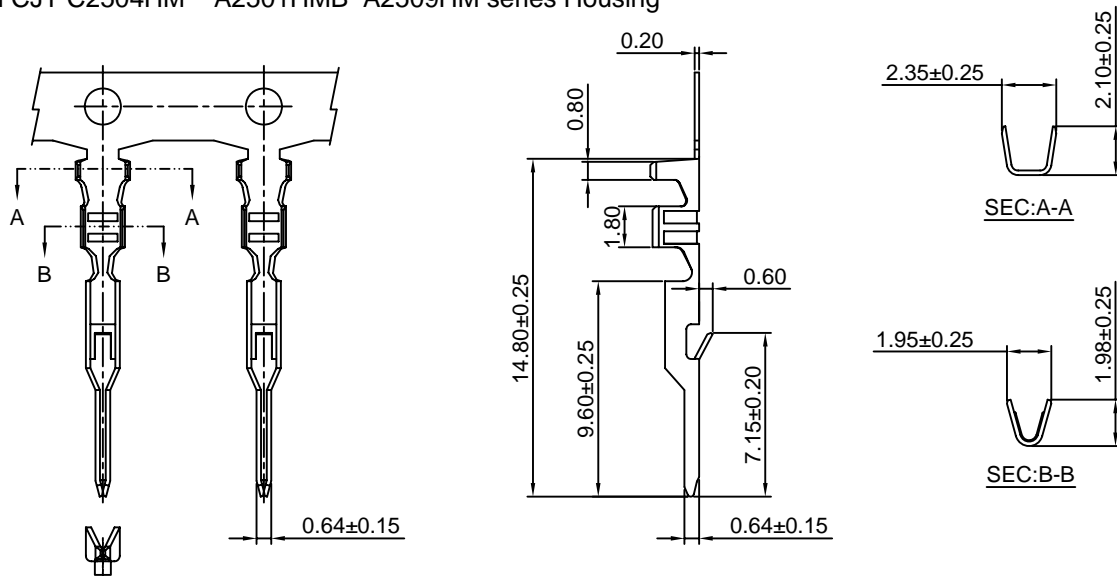
Optional Gold plating available but MOQ requested

C2504M-T

2.50mm pitch Crimp Terminal

Reference Informations:

*Used in CJT C2504HM A2501HMB A2509HM series Housing


Ordering information & Specifications:

Unit:mm

Part NO.	Wire Range	Insulation O.D.	Material	Finish	Qty/reel
C2504M-TB	AWG#22-#28	1.90mm(max)	Brass	Tin over Nickel	10,000 PCS
C2504M-TP	AWG#22-#28	1.90mm(max)	Phosphor Bronze	Tin over Nickel	10,000 PCS
C2504M-GB	AWG#22-#28	1.90mm(max)	Brass	Gold over Nickel	10,000 PCS
C2504M-GP	AWG#22-#28	1.90mm(max)	Phosphor Bronze	Gold over Nickel	10,000 PCS

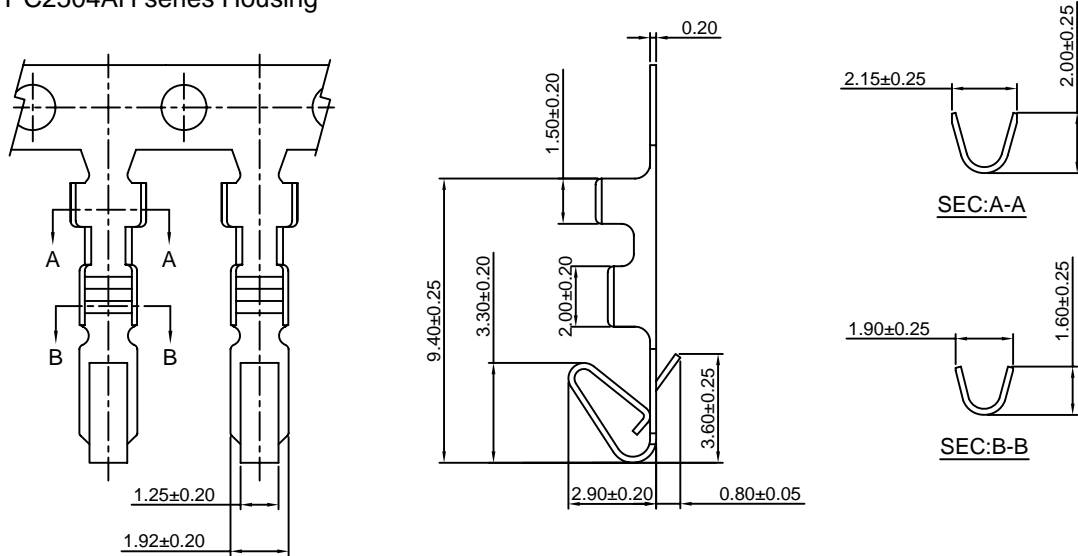
Optional Gold plating available but MOQ requested

C2504F-T-A

2.50mm Pitch Crimp Terminal

Reference Informations:

*Used in CJT C2504AH series Housing



Ordering information & Specifications:

Unit:mm

Part NO.	Wire Range	Insulation O.D.	Material	Finish	Qty/reel
C2504F-TB-A	AWG#22-#28	1.90mm(max)	Brass	Tin over Nickel	10,000 PCS
C2504F-TP-A	AWG#22-#28	1.90mm(max)	Phosphor Bronze	Tin over Nickel	10,000 PCS
C2504F-GB-A	AWG#22-#28	1.90mm(max)	Brass	Gold over Nickel	10,000 PCS
C2504F-GP-A	AWG#22-#28	1.90mm(max)	Phosphor Bronze	Gold over Nickel	10,000 PCS

Optional Gold plating available but MOQ requested

C2504HF

2.50mm Pitch Housing

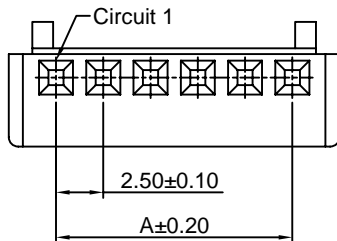
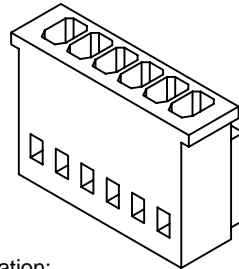
Reference Informations:

*Material:Nylon 66,UL94V-0

*Suitable CJT C2504F series Terminal

*Mates with CJT C2504HM C2504HMA C2504HMB series Housing

*Color:Beige



Ordering Information:

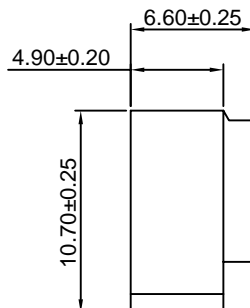
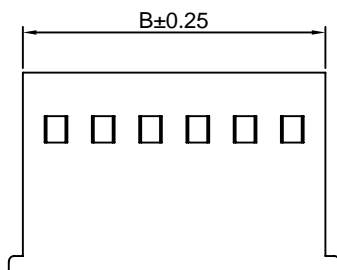
C2504HF-XP - **
1 2

1.Part No.

2.Color:

(blank):Beige

WH:White



Ordering Information & Dimensions:

PART NO.	Dimensions	
	A	B
C2504HF-2P	2.50	6.00
C2504HF-3P	5.00	8.50
C2504HF-4P	7.50	11.00
C2504HF-5P	10.00	13.50
C2504HF-6P	12.50	16.00
C2504HF-7P	15.00	18.50
C2504HF-8P	17.50	21.00
C2504HF-9P	20.00	23.50
C2504HF-10P	22.50	26.00
C2504HF-11P	25.00	28.50
C2504HF-12P	27.50	31.00
C2504HF-13P	30.00	33.50
C2504HF-14P	32.50	36.00
C2504HF-15P	35.00	38.50
C2504HF-16P	37.50	41.00
C2504HF-17P	40.00	43.50
C2504HF-18P	42.50	46.00
C2504HF-19P	45.00	48.50
C2504HF-20P	47.50	51.00

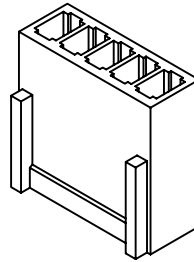
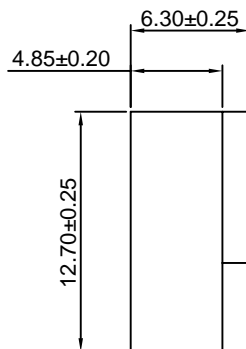
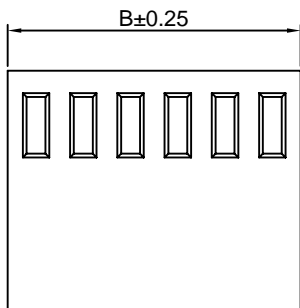
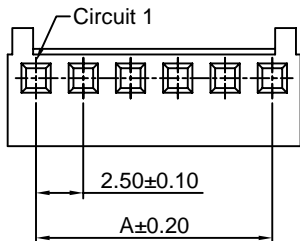
Unit: mm

C2504AH

2.50mm Pitch Housing

Reference Informations:

- *Material:Nylon 66,UL94V-0
- *Suitable CJT A2543F-A series Terminal
- *Mates with CJT C2504WV C2504WR series Wafer
- *Color:Beige



Ordering Information & Dimensions:

PART NO.	Dimensions	
	A	B
C2504AH-2P	2.50	5.50
C2504AH-3P	5.00	8.00
C2504AH-4P	7.50	10.50
C2504AH-5P	10.00	13.00
C2504AH-6P	12.50	15.50
C2504AH-7P	15.00	18.00
C2504AH-8P	17.50	20.50
C2504AH-9P	20.00	23.00
C2504AH-10P	22.50	25.50
C2504AH-11P	25.00	28.00
C2504AH-12P	27.50	30.50
C2504AH-13P	30.00	33.00
C2504AH-14P	32.50	35.50
C2504AH-15P	35.00	38.00
C2504AH-16P	37.50	40.50
C2504AH-17P	40.00	43.00
C2504AH-18P	42.50	45.50
C2504AH-19P	45.00	48.00
C2504AH-20P	47.50	50.50

Unit: mm

C2504HM

2.50mm Pitch Housing

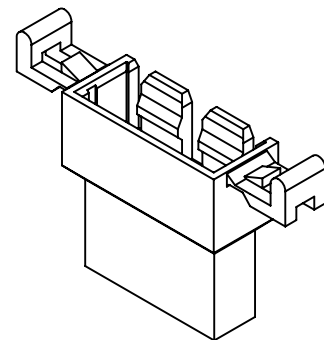
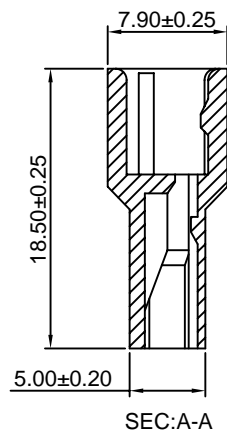
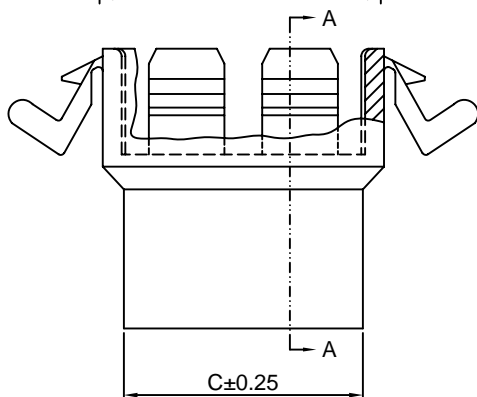
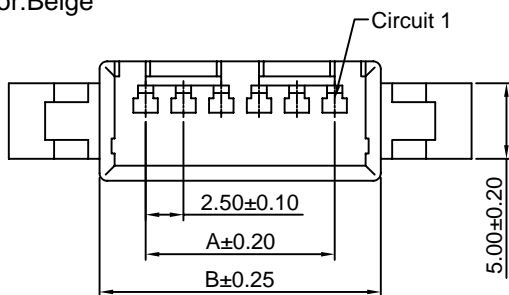
Reference Informations:

- *Material:Nylon 66, UL94V-0
- *Suitable CJT C2504M series Terminal
- *Mates with CJT C2504HF series Housing
- *Color:Beige

Ordering Information:

C2504HM-XP - **
1 2

- 1.Part No.
- 2.Color:
(blank):Beige
WH:White



Ordering Information & Dimensions:

PART NO.	Dimensions		
	A	B	C
C2504HM-2P	2.50	8.60	5.80
C2504HM-3P	5.00	11.10	8.30
C2504HM-4P	7.50	13.60	10.80
C2504HM-5P	10.00	16.10	13.30
C2504HM-6P	12.50	18.60	15.80
C2504HM-7P	15.00	21.10	18.30
C2504HM-8P	17.50	23.60	20.80
C2504HM-9P	20.00	26.10	23.30
C2504HM-10P	22.50	28.60	25.80
C2504HM-11P	25.00	31.10	28.30
C2504HM-12P	27.50	33.60	30.80

Unit: mm

C2504HMA

2.50mm Pitch Housing

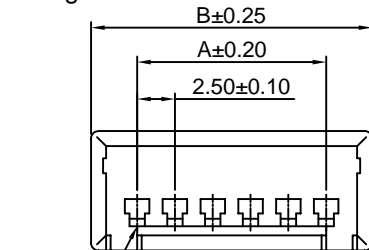
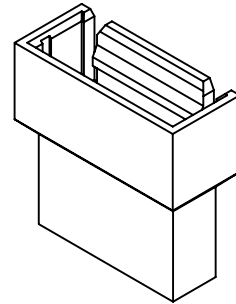
Reference Informations:

- *Material:Nylon 66, UL94V-0
- *Suitable CJT C2504M series Terminal
- *Mates with CJT C2504HF series Housing
- *Color:Beige

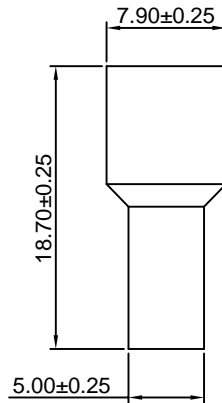
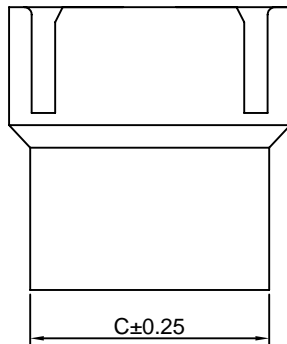
Ordering Information:

C2504HMA-XP - **
1 2

- 1.Part No.
- 2.Color:
(blank):Beige
WH:White



Circuit 1



Ordering Information & Dimensions:

PART NO.	Dimensions		
	A	B	C
C2504HMA-2P	2.50	8.60	5.80
C2504HMA-3P	5.00	11.10	8.30
C2504HMA-4P	7.50	13.60	10.80
C2504HMA-5P	10.00	16.10	13.30
C2504HMA-6P	12.50	18.60	15.80
C2504HMA-7P	15.00	21.10	18.30
C2504HMA-8P	17.50	23.60	20.80
C2504HMA-9P	20.00	26.10	23.30
C2504HMA-10P	22.50	28.60	25.80
C2504HMA-11P	25.00	31.10	28.30
C2504HMA-12P	27.50	33.60	30.80

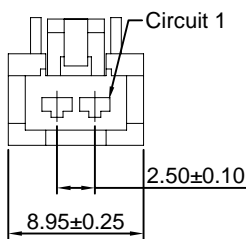
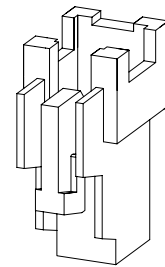
Unit: mm

C2504HMB

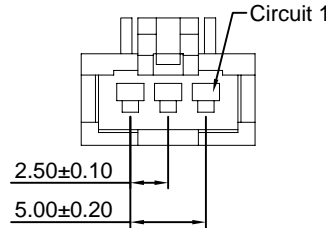
2.50mm Pitch Housing

Reference Informations:

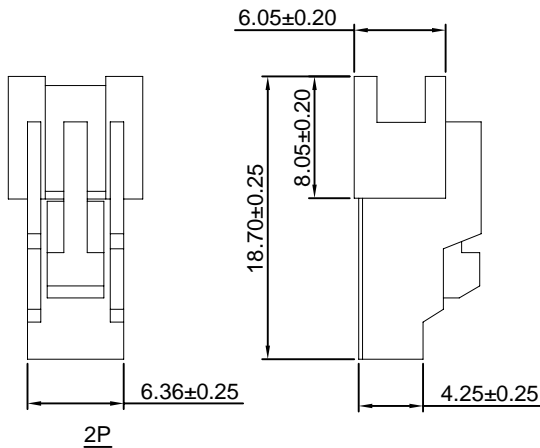
- *Material:Nylon 66, UL94V-0
- *Suitable CJT C2504M series Terminal
- *Color:White



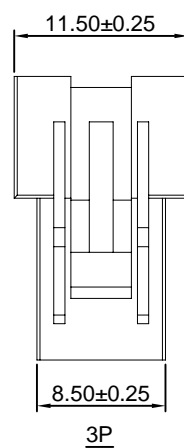
Circuit 1



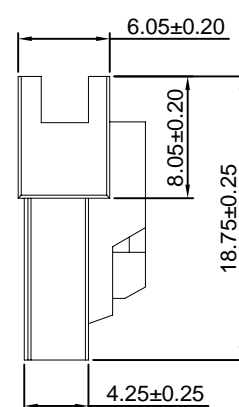
Circuit 1



2P



3P

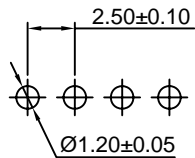
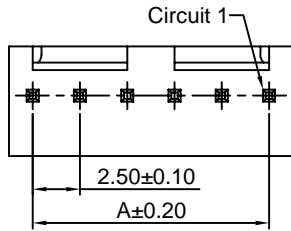


C2504WV

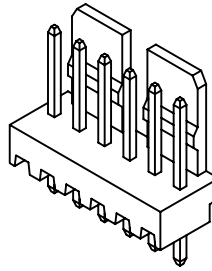
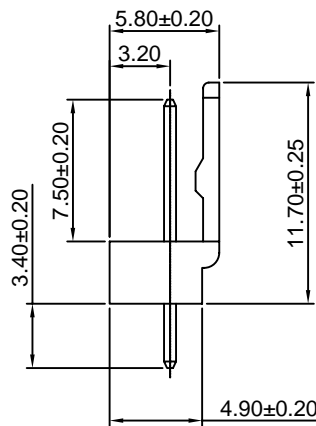
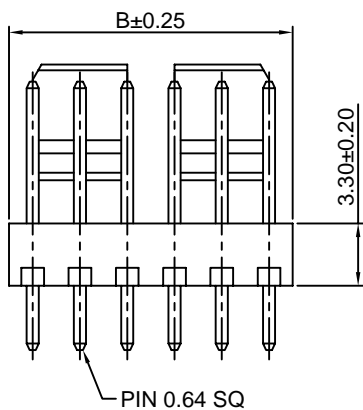
2.50mm Pitch 180° Wafer

Reference Informations:

- *Material: Pin: Brass/Tin over Nickel
Insulator: Nylon 66, UL94V-0
- *Mates with CJT C2504 series Housing
- *Color: Beige



P.C.B LAYOUT



Ordering Information & Dimensions:

PART NO.	Dimensions	
	A	B
C2504WV-2P	2.50	5.00
C2504WV-3P	5.00	7.50
C2504WV-4P	7.50	10.00
C2504WV-5P	10.00	12.50
C2504WV-6P	12.50	15.00
C2504WV-7P	15.00	17.50
C2504WV-8P	17.50	20.00
C2504WV-9P	20.00	22.50
C2504WV-10P	22.50	25.00
C2504WV-11P	25.00	27.50
C2504WV-12P	27.50	30.00
C2504WV-13P	30.00	32.50
C2504WV-14P	32.50	35.00
C2504WV-15P	35.00	37.50
C2504WV-16P	37.50	40.00
C2504WV-17P	40.00	42.50
C2504WV-18P	42.50	45.00
C2504WV-19P	45.00	47.50
C2504WV-20P	47.50	50.00

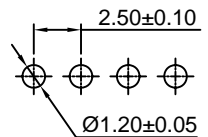
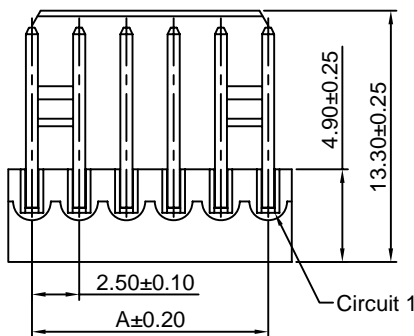
Unit: mm

C2504WR

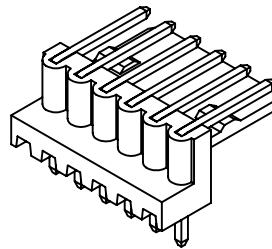
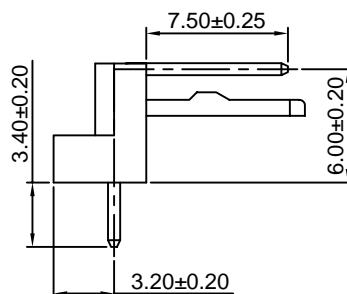
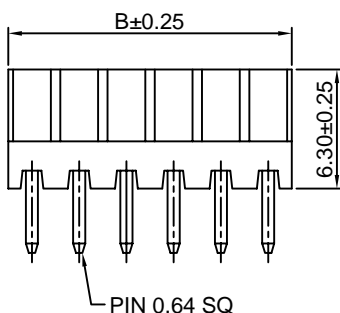
2.50mm Pitch 90° Wafer

Reference Informations:

- *Material: Pin: Brass/Tin over Nickel
Insulator: Nylon 66, UL94V-0
- *Mates with CJT C2504 series Housing
- *Color: Beige



P.C.B LAYOUT



Ordering Information & Dimensions:

PART NO.	Dimensions	
	A	B
C2504WR-2P	2.50	5.00
C2504WR-3P	5.00	7.50
C2504WR-4P	7.50	10.00
C2504WR-5P	10.00	12.50
C2504WR-6P	12.50	15.00
C2504WR-7P	15.00	17.50
C2504WR-8P	17.50	20.00
C2504WR-9P	20.00	22.50
C2504WR-10P	22.50	25.00
C2504WR-11P	25.00	27.50
C2504WR-12P	27.50	30.00
C2504WR-13P	30.00	32.50
C2504WR-14P	32.50	35.00
C2504WR-15P	35.00	37.50
C2504WR-16P	37.50	40.00
C2504WR-17P	40.00	42.50
C2504WR-18P	42.50	45.00
C2504WR-19P	45.00	47.50
C2504WR-20P	47.50	50.00

Unit: mm

X-ON Electronics

Largest Supplier of Electrical and Electronic Components

Click to view similar products for [Headers & Wire Housings](#) category:

Click to view products by [Changjiang](#) manufacturer:

Other Similar products are found below :

[57102-F02-18ULF](#) [58102-G61-06LF](#) [0009485154](#) [009176003701906](#) [0050291907](#) [00-9021-0611-00-339](#) [02.125.8002.8](#) [609-3404](#) [61062-3](#)
[622-0430](#) [622-3653LF](#) [63453-116](#) [636-1030](#) [636-1427](#) [636-3427](#) [636-4007](#) [641938-9](#) [644827-2](#) [65495-038](#) [65692-001LF](#) [65781-018](#)
[65781-047](#) [65817-010LF](#) [65817-015LF](#) [66207-023LF](#) [67016-026LF](#) [67095-007LF](#) [68631-112](#) [68645-018](#) [68648-049](#) [699319-000](#)
[70.362.1628.0](#) [70-4210](#) [70-4226B](#) [70-4853B](#) [707-5020](#) [707-5028](#) [71.350.2428.0](#) [71961-016LF](#) [733-134](#) [754199-000](#) [760-3052](#) [787-8014-00](#)
[FCN-367T-T012/H](#) [80.063.4001.1](#) [800-90-001-10-001000](#) [800-90-010-10-002000](#) [801-43-002-10-013000](#) [801-43-006-10-002000](#)
[803-41-018-10-001000](#)