

SPECIFICATIONS:

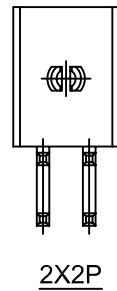
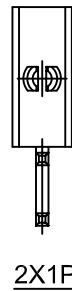
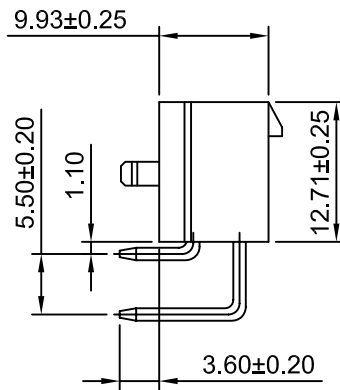
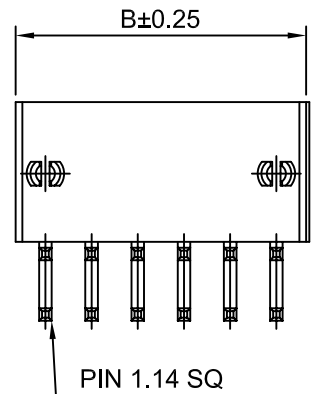
Current Rating: 9A AC,DC
 Voltage Rating: 600V AC,DC
 Temperature Range: -40°C ~ +105°C
 Contact Resistance: 10mΩ Max
 Insulation Resistance: 1000MΩ Min
 Withstanding Voltage: 1500V AC/minute
 Pin Material: Brass/Tin over Nickel
 Material: Nylon 66,UL94V-2(Natural)

Ordering Information:
 C4201WR-F-2xXP - ** - ** - **
 1 2 3 4

- Part No.
- Material:
 (blank);Nylon 66 UL94V-2
 V0:Nylon 66 UL94V-0
 GWT:Nylon 66 UL94V-0,GWT 750°C
- Color:
 (blank);Natural
 WH:White
 BK:Black
 RD:Red
 YL:Yellow
 BL:Blue
- Finish:
 (blank);Tin over Nickel
 G:Gold over Nickel(1u")
 G3:Gold over Nickel(3u")
 G15:Gold over Nickel(15u")
 G30:Gold over Nickel(30u")

Ordering Information & Dimensions

Circuits	Dimensions(mm)		Circuits	Dimensions(mm)	
	A	B		A	B
2x1P	---	5.40	2x7P	25.20	30.60
2x2P	4.20	9.60	2x8P	29.40	34.80
2x3P	8.40	13.80	2x9P	33.60	39.00
2x4P	12.60	18.00	2x10P	37.80	43.20
2x5P	16.80	22.20	2x11P	42.00	47.40
2x6P	21.00	26.40	2x12P	46.20	51.60



2X3P~2X12P



CHANGJIANG CONNECTORS CO.,LTD.

Unit	Scale	Sheet
mm	1.5:1	1 of 1
Draw BY:	Approved :	
LIZQ	GONGYB	

Title :
**4.20mm PITCH
 90° DUAL ROW WAFER
 WITH FOOT**

General Tolerance		
A0	NEW RELEASE	2005.05.10
REV	DESCRIPTION	DATE

DRAW NO : C4201WR-F-2xXP REV A0

X-ON Electronics

Largest Supplier of Electrical and Electronic Components

Click to view similar products for [Headers & Wire Housings](#) category:

Click to view products by [Changjiang](#) manufacturer:

Other Similar products are found below :

[57102-F02-18ULF](#) [58102-G61-06LF](#) [582553-1](#) [0009485154](#) [009176003701906](#) [0050291907](#) [02.125.8002.8](#) [609-3404](#) [61062-3](#) [622-0430](#)
[622-3653LF](#) [63453-116](#) [636-1030](#) [636-1427](#) [636-3427](#) [636-4007](#) [641938-9](#) [65495-038](#) [65692-001LF](#) [65781-018](#) [65781-047](#) [65817-015LF](#)
[66207-023LF](#) [67016-026LF](#) [67095-007LF](#) [68631-112](#) [68645-018](#) [68648-049](#) [699319-000](#) [M90C108951C](#) [70.362.1628.0](#) [70-4210](#) [70-4226B](#)
[70-4853B](#) [707-5020](#) [707-5028](#) [71.350.2428.0](#) [71961-016LF](#) [733-134](#) [754199-000](#) [760-3052](#) [787-8014-00](#) [FCN-367T-T012/H](#)
[80.063.4001.1](#) [800-90-001-10-001000](#) [801-43-002-10-013000](#) [801-43-006-10-002000](#) [803-41-018-10-001000](#) [803-43-014-20-001000](#)
[803-43-024-10-001000](#)