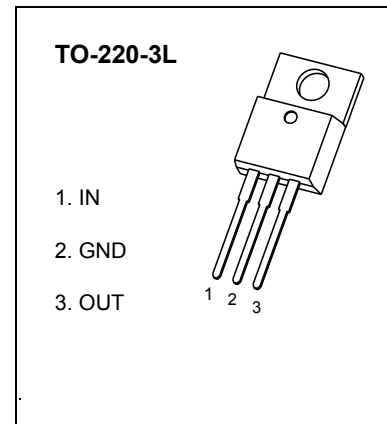


TO-220-3L Plastic-Encapsulate Voltage Regulators

CJ7808 Three-terminal positive voltage regulator

FEATURES

- Maximum output current
 $I_{OM}: 1.5\text{ A}$
- Output voltage
 $V_O: 8\text{ V}$
- Continuous total dissipation
 $P_D: 1.5\text{ W}$ ($T_a = 25\text{ }^\circ\text{C}$)



ABSOLUTE MAXIMUM RATINGS (Operating temperature range applies unless otherwise specified)

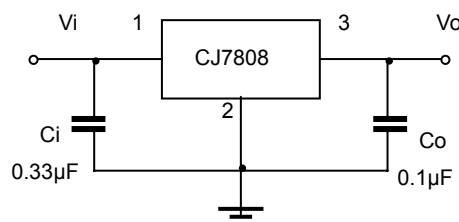
Parameter	Symbol	Value	Unit
Input Voltage	V_i	35	V
Thermal Resistance from Junction to Ambient	$R_{\theta JA}$	66.7	$^\circ\text{C/W}$
Operating Junction Temperature Range	T_{OPR}	-25~+125	$^\circ\text{C}$
Storage Temperature Range	T_{STG}	-65~+150	$^\circ\text{C}$

ELECTRICAL CHARACTERISTICS AT SPECIFIED VIRTUAL JUNCTION TEMPERATURE ($V_i=14\text{ V}$, $I_o=500\text{ mA}$, $C_i=0.33\mu\text{ F}$, $C_o=0.1\mu\text{ F}$, unless otherwise specified)

Parameter	Symbol	Test conditions	Min	Typ	Max	Unit
Output Voltage	V_o	$25\text{ }^\circ\text{C}$	7.7	8	8.3	V
		$10.5\text{ V} \leq V_i \leq 23\text{ V}$, $I_o=5\text{ mA}-1\text{ A}$	-25-125 $^\circ\text{C}$	7.6	8	8.4
Load Regulation	ΔV_o	$I_o=5\text{ mA}-1.5\text{ A}$	$25\text{ }^\circ\text{C}$	12	160	mV
		$I_o=250\text{ mA}-750\text{ mA}$	$25\text{ }^\circ\text{C}$	4	80	mV
Line Regulation	ΔV_o	$10.5\text{ V} \leq V_i \leq 25\text{ V}$	$25\text{ }^\circ\text{C}$	6	160	mV
		$11\text{ V} \leq V_i \leq 17\text{ V}$	$25\text{ }^\circ\text{C}$	2	80	mV
Quiescent Current	I_q	$25\text{ }^\circ\text{C}$	4.3	8	mA	
Quiescent Current Change	ΔI_q	$10.5\text{ V} \leq V_i \leq 25\text{ V}$	-25-125 $^\circ\text{C}$		1	mA
		$5\text{ mA} \leq I_o \leq 1\text{ A}$	-25-125 $^\circ\text{C}$		0.5	mA
Output Voltage Drift	$\Delta V_o/\Delta T$	$I_o=5\text{ mA}$	-25-125 $^\circ\text{C}$	-0.8		mV/ $^\circ\text{C}$
Output Noise Voltage	V_N	$10\text{ Hz} \leq f \leq 100\text{ KHz}$	$25\text{ }^\circ\text{C}$	52		$\mu\text{ V}/V_o$
Ripple Rejection	RR	$11.5\text{ V} \leq V_i \leq 21.5\text{ V}$, $f=120\text{ Hz}$	-25-125 $^\circ\text{C}$	55	72	dB
Dropout Voltage	V_d	$I_o=1\text{ A}$	$25\text{ }^\circ\text{C}$	2		V
Output Resistance	R_o	$f=1\text{ KHz}$	$25\text{ }^\circ\text{C}$	10		m Ω
Short Circuit Current	I_{sc}		$25\text{ }^\circ\text{C}$	450		mA
Peak Current	I_{pk}		$25\text{ }^\circ\text{C}$	2.2		A

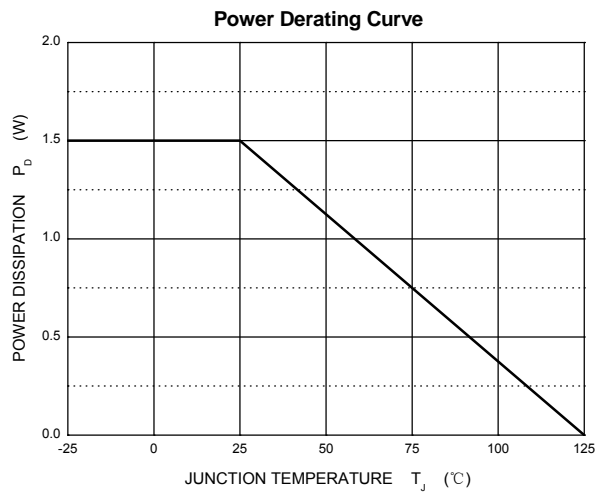
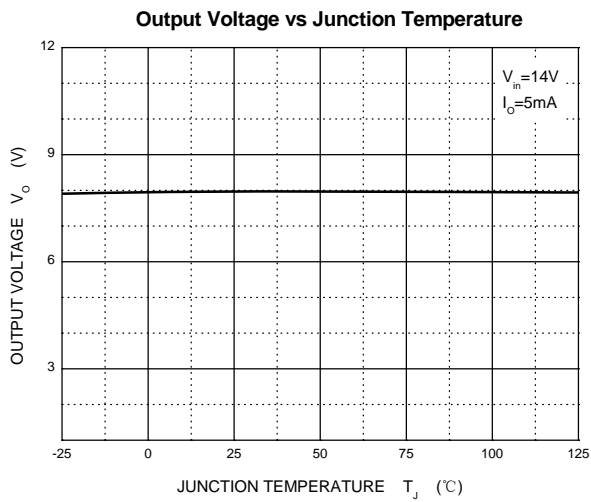
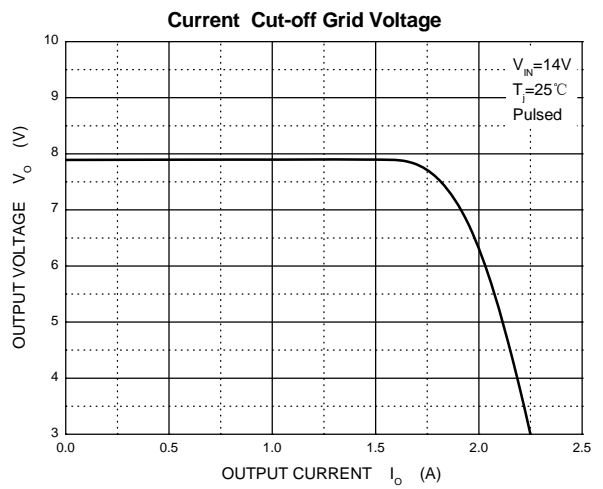
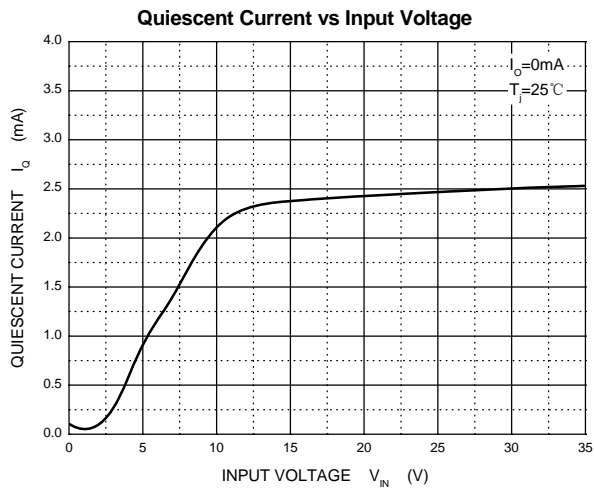
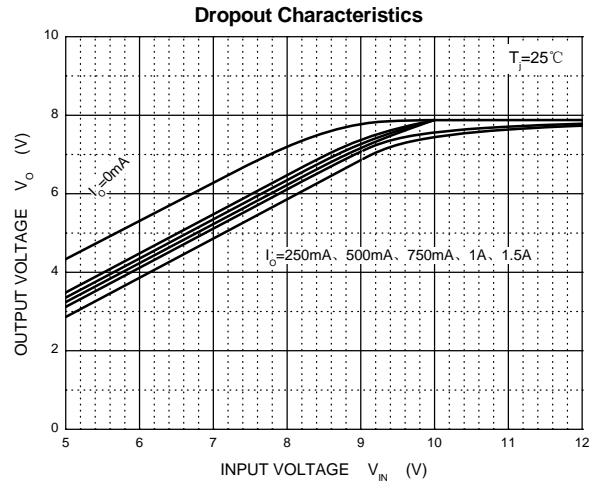
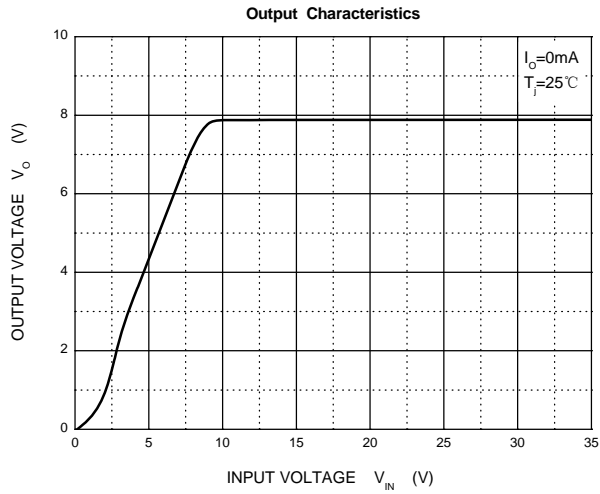
* Pulse test.

TYPICAL APPLICATION

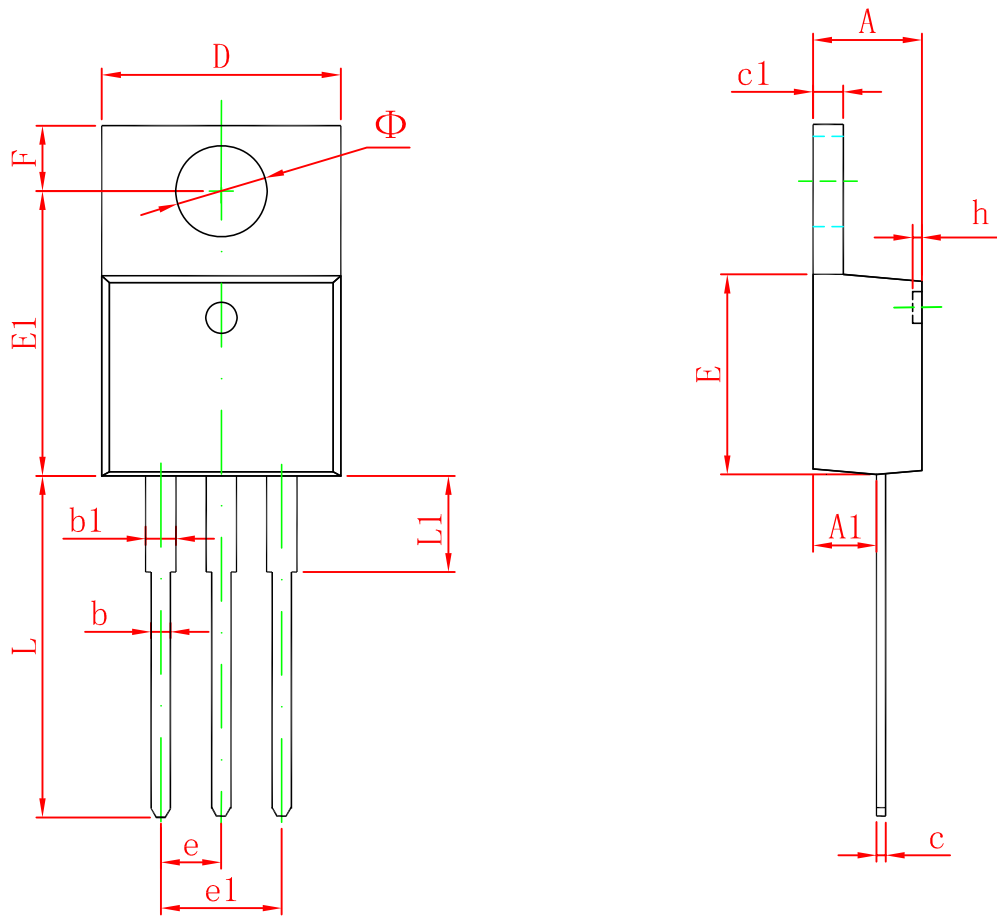


Note: Bypass capacitors are recommended for optimum stability and transient response and should be located as close as possible to the regulators.

Typical Characteristics



TO-220-3L Package Outline Dimensions



Symbol	Dimensions In Millimeters		Dimensions In Inches	
	Min	Max	Min	Max
A	4.470	4.670	0.176	0.184
A1	2.520	2.820	0.099	0.111
b	0.710	0.910	0.028	0.036
b1	1.170	1.370	0.046	0.054
c	0.310	0.530	0.012	0.021
c1	1.170	1.370	0.046	0.054
D	10.010	10.310	0.394	0.406
E	8.500	8.900	0.335	0.350
E1	12.060	12.460	0.475	0.491
e	2.540 TYP		0.100 TYP	
e1	4.980	5.180	0.196	0.204
F	2.590	2.890	0.102	0.114
h	0.000	0.300	0.000	0.012
L	13.400	13.800	0.528	0.543
L1	3.560	3.960	0.140	0.156
Φ	3.735	3.935	0.147	0.155

X-ON Electronics

Largest Supplier of Electrical and Electronic Components

Click to view similar products for [Linear Voltage Regulators](#) category:

Click to view products by [Changjiang](#) manufacturer:

Other Similar products are found below :

[LV56831P-E](#) [LV5684PVD-XH](#) [MCDTSA6-2R](#) [L7815ACV-DG](#) [PQ3DZ53U](#) [LV56801P-E](#) [TLE42794G](#) [L78L05CZ/1SX](#) [L78LR05DL-MA-E](#) [636416C](#) [714954EB](#) [BA033LBSG2-TR](#) [LV5680P-E](#) [L78M15CV-DG](#) [TLS202B1MBV33HTSA1](#) [L79M05T-E](#) [TLS202A1MBVHTSA1](#) [L78LR05D-MA-E](#) [NCV317MBTG](#) [NTE7227](#) [LV5680NPVC-XH](#) [LT1054CN8](#) [MP2018GZD-5-Z](#) [MP2018GZD-33-Z](#) [MIC5281-3.3YMM](#) [RT9078-28GQZ](#) [MC78L06BP-AP](#) [TA48LS05F\(TE85L,F\)](#) [TC47BR5003ECT](#) [TCR2LN12,LF\(S](#) [TCR2LN28,LF\(S](#) [TCR2LN30,LF\(S](#) [TCR3DF295,LM\(CT](#) [TCR3DF40,LM\(CT](#) [BA178M20CP-E2](#) [L78M05TL-TL-E](#) [L78M12ABDT](#) [LR645N3-G-P003](#) [LR645N3-G-P013](#) [ZXTR2005P5-13](#) [SCD7812BTG](#) [TCR3DF335,LM\(CT](#) [TLE42994E V33](#) [ZXTR2008K-13](#) [ZXTR2005K-13](#) [L88R05DL-E](#) [ADP3300ARTZ-2.7RL7](#) [LM120K-15/883](#) [IFX54441LDVXUMA1](#) [LM317D2T-TR](#)