



TO-92 Encapsulate Three-terminal Voltage Regulators

CJ78L06 Three-terminal positive voltage regulator

FEATURES

Maximum Output current

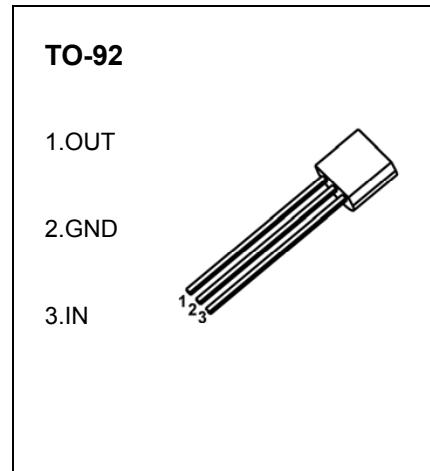
$I_{OM}: 0.1 A$

Output voltage

$V_o: 6 V$

Continuous total dissipation

$P_D: 0.625W$



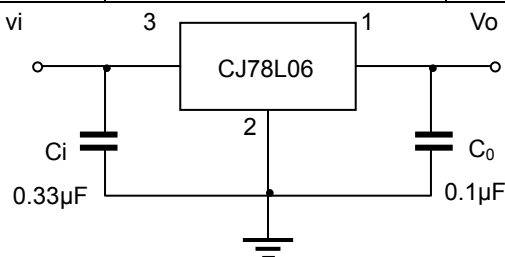
ABSOLUTE MAXIMUM RATINGS (Operating temperature range applies unless otherwise specified)

Parameter	Symbol	Value	Units
Input Voltage	V_I	30	V
Operating Junction Temperature Range	T_{OPR}	0 to +175	°C
Storage Temperature Range	T_{STG}	-55 to +150	°C

ELECTRICAL CHARACTERISTICS AT SPECIFIED VIRTUAL JUNCTION TEMPERATURE ($V_I=11V, I_o=40mA, C_i=0.33\mu F, C_o=0.1\mu F$, unless otherwise specified)

Parameter	Symbol	Test conditions	Min	Typ	Max	Unit
Output voltage	V_o	$25^\circ C$	5.75	6.0	6.25	V
		$8V \leq V_i \leq 20V, I_o=1mA-40mA$	5.7	6.0	6.3	V
		$0-125^\circ C$ $I_o=1mA-70mA$	5.7	6.0	6.3	V
Load Regulation	ΔV_o	$I_o=1mA-100mA$ $25^\circ C$		16	80	mV
		$I_o=1mA-40mA$ $25^\circ C$		9	40	mV
Line regulation	ΔV_o	$8V \leq V_i \leq 20V$ $25^\circ C$		35	175	mV
		$9V \leq V_i \leq 20V$ $25^\circ C$		29	125	mV
Quiescent Current	I_q	$25^\circ C$		3.9	6.0	mA
Quiescent Current Change	ΔI_q	$9V \leq V_i \leq 20V$ $0-125^\circ C$			1.5	mA
	ΔI_q	$1mA \leq I_o \leq 40mA$ $0-125^\circ C$			0.1	mA
Output Noise Voltage	V_N	$10Hz \leq f \leq 100KHz$ $25^\circ C$		46		μV
Ripple Rejection	RR	$9V \leq V_i \leq 19V, f=120Hz$ $0-125^\circ C$	40	48		dB
Dropout Voltage	V_d	$25^\circ C$		1.7		V

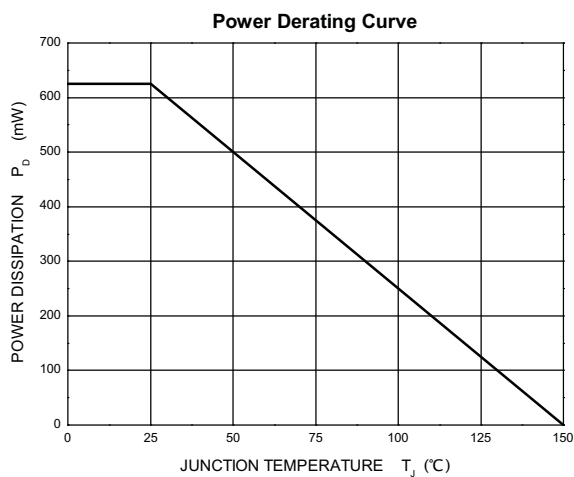
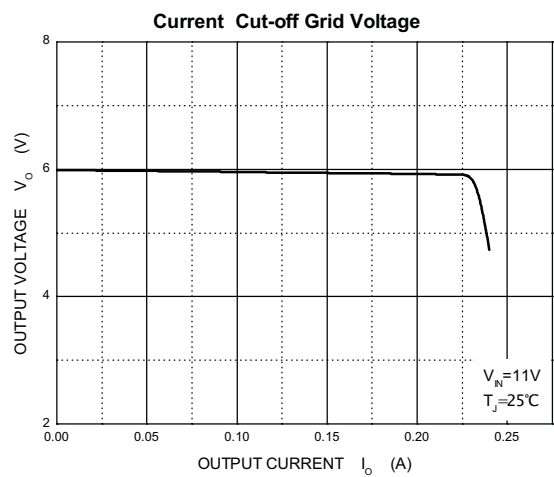
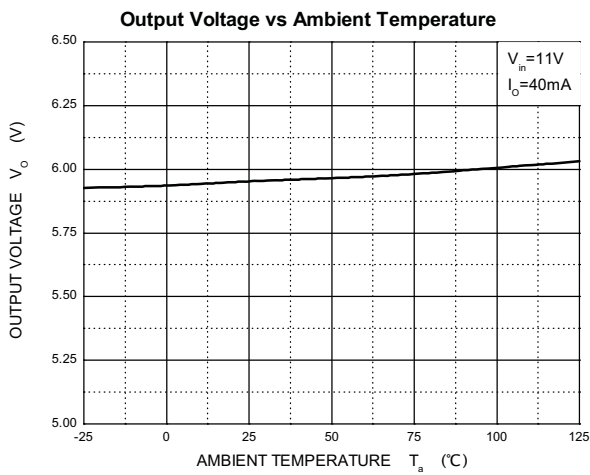
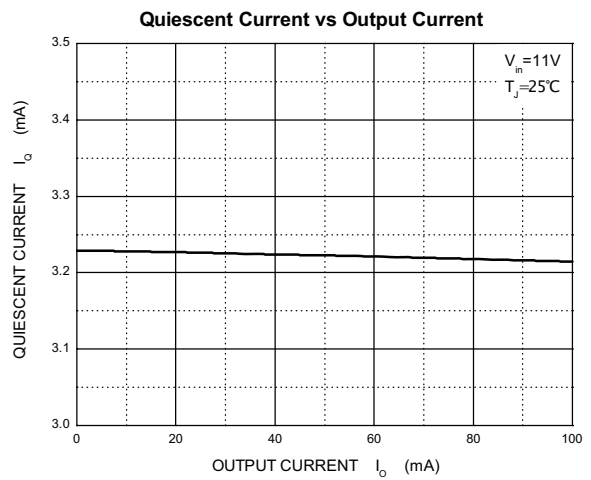
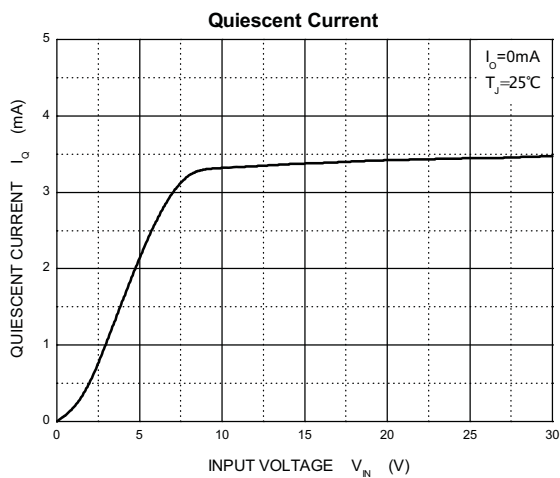
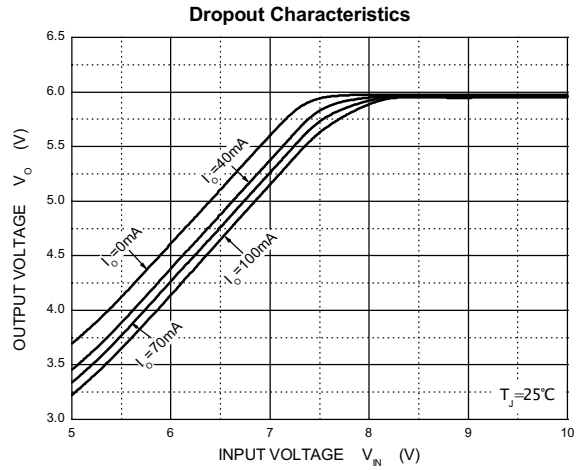
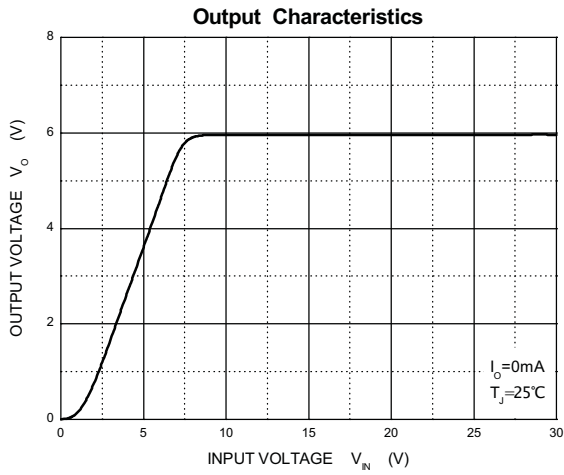
TYPICAL APPLICATION



Note : Bypass capacitors are recommended for optimum stability and transient response and should be located as close as possible to the regulators.

Typical Characteristics

CJ78L06



X-ON Electronics

Largest Supplier of Electrical and Electronic Components

Click to view similar products for [Linear Voltage Regulators](#) category:

Click to view products by [Changjiang](#) manufacturer:

Other Similar products are found below :

[LV56831P-E](#) [LV5684PVD-XH](#) [MCDTSA6-2R](#) [L7815ACV-DG](#) [PQ3DZ53U](#) [LV56801P-E](#) [TLE42794G](#) [L78L05CZ/1SX](#) [L78LR05DL-MA-E](#) [636416C](#) [714954EB](#) [BA033LBSG2-TR](#) [LV5680P-E](#) [L78M15CV-DG](#) [TLS202B1MBV33HTSA1](#) [L79M05T-E](#) [TLS202A1MBVHTSA1](#) [L78LR05D-MA-E](#) [NCV317MBTG](#) [NTE7227](#) [LV5680NPVC-XH](#) [LT1054CN8](#) [MP2018GZD-5-Z](#) [MP2018GZD-33-Z](#) [MIC5281-3.3YMM](#) [RT9078-28GQZ](#) [MC78L06BP-AP](#) [TA48LS05F\(TE85L,F\)](#) [TC47BR5003ECT](#) [TCR2LN12,LF\(S](#) [TCR2LN28,LF\(S](#) [TCR2LN30,LF\(S](#) [TCR3DF295,LM\(CT](#) [TCR3DF40,LM\(CT](#) [BA178M20CP-E2](#) [L78M05TL-TL-E](#) [L78M12ABDT](#) [LR645N3-G-P003](#) [LR645N3-G-P013](#) [ZXTR2005P5-13](#) [SCD7812BTG](#) [TCR3DF335,LM\(CT](#) [TLE42994E V33](#) [ZXTR2008K-13](#) [ZXTR2005K-13](#) [L88R05DL-E](#) [ADP3300ARTZ-2.7RL7](#) [LM120K-15/883](#) [IFX54441LDVXUMA1](#) [LM317D2T-TR](#)