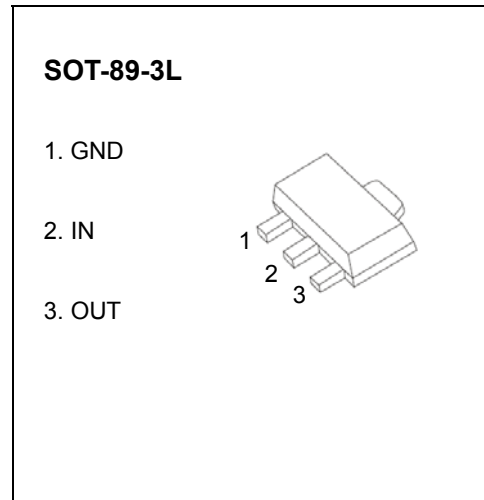


# SOT-89-3L Encapsulate Three Terminal Voltage Regulators

## CJ79L06 Three-terminal negative voltage regulator

### FEATURES

- Maximum output current  
 $I_{OM}: 0.1\text{ A}$
- Output voltage  
 $V_o: -6\text{ V}$
- Continuous total dissipation  
 $P_D: 0.5\text{ W}$



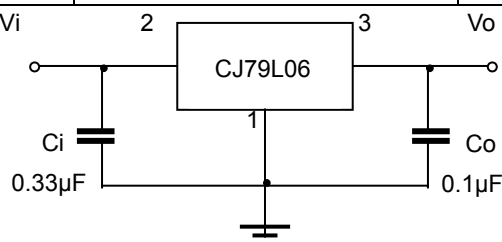
### ABSOLUTE MAXIMUM RATINGS (Operating temperature range applies unless otherwise specified)

| Parameter                            | Symbol    | Value    | Units |
|--------------------------------------|-----------|----------|-------|
| Input Voltage                        | $V_i$     | -30      | V     |
| Operating Junction Temperature Range | $T_{OPR}$ | 0~+150   | °C    |
| Storage Temperature Range            | $T_{STG}$ | -55~+150 | °C    |

### ELECTRICAL CHARACTERISTICS AT SPECIFIED VIRTUAL JUNCTION TEMPERATURE ( $V_i=-11\text{V}, I_o=40\text{mA}, C_i=0.33\mu\text{F}, C_o=0.1\mu\text{F}$ , unless otherwise specified)

| Parameter                | Symbol       | Test conditions                                       | Min   | Typ  | Max   | Unit |
|--------------------------|--------------|---|-------|------|-------|------|
| Output Voltage           | $V_o$        | 25°C  | -5.75 | -6.0 | -6.25 | V    |
|                          |              | -8V ≤ $V_i$ ≤ -20V, $I_o=1\text{mA} \sim 40\text{mA}$ | -5.7  | -6.0 | -6.3  | V    |
|                          |              | 0-125°C, $I_o=1\text{mA} \sim 70\text{mA}$            | -5.7  | -6.0 | -6.3  | V    |
| Load Regulation          | $\Delta V_o$ | $I_o=1\text{mA} \sim 100\text{mA}$ , 25°C             |       | 21   | 80    | mV   |
|                          |              | $I_o=1\text{mA} \sim 40\text{mA}$ , 25°C              |       | 11   | 40    | mV   |
| Line Regulation          | $\Delta V_o$ | -8V ≤ $V_i$ ≤ -20V, 25°C                              |       | 20   | 175   | mV   |
|                          |              | -9V ≤ $V_i$ ≤ -20V, 25°C                              |       | 15   | 125   | mV   |
| Quiescent Current        | $I_q$        | 25°C  |       | 3.9  | 6.0   | mA   |
| Quiescent Current Change | $\Delta I_q$ | -9V ≤ $V_i$ ≤ -20V, 0-125°C                           |       |      | 1.5   | mA   |
|                          | $\Delta I_q$ | 1mA ≤ $V_i$ ≤ 40mA, 0-125°C                           |       |      | 0.1   | mA   |
| Output Noise Voltage     | $V_N$        | 10Hz ≤ f ≤ 100KHz, 25°C                               |       | 44   |       | μV   |
| Ripple Rejection         | RR           | -9V ≤ $V_i$ ≤ -19V, f=120HZ, 0-125°C                  | 40    | 48   |       | dB   |
| Dropout Voltage          | $V_d$        | 25°C  |       | 1.7  |       | V    |

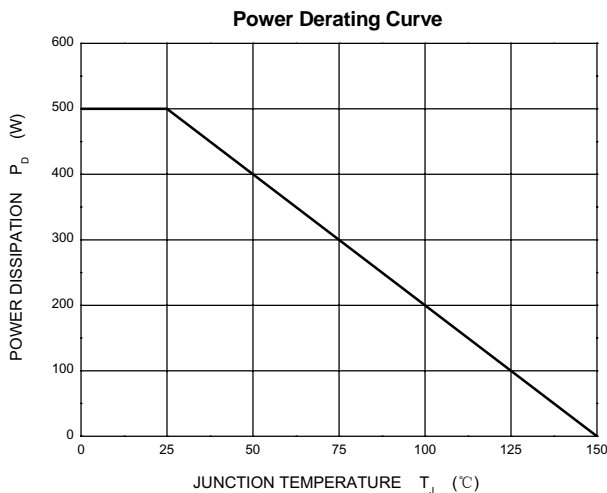
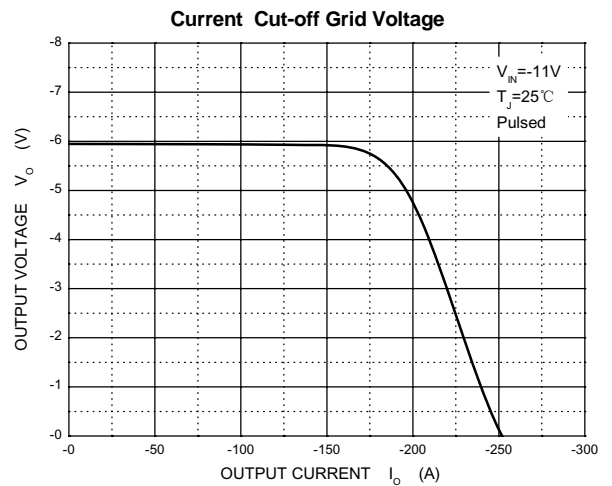
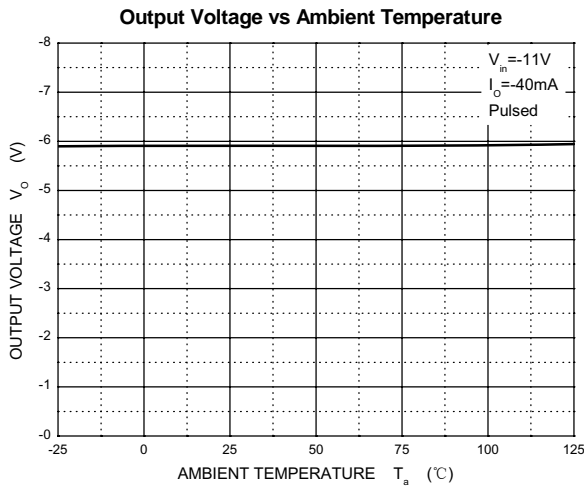
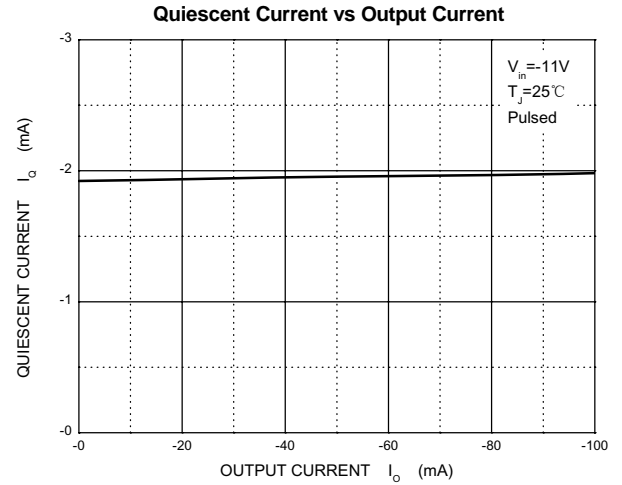
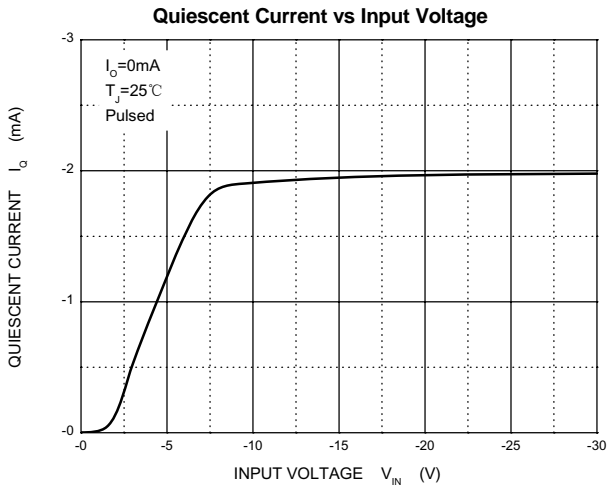
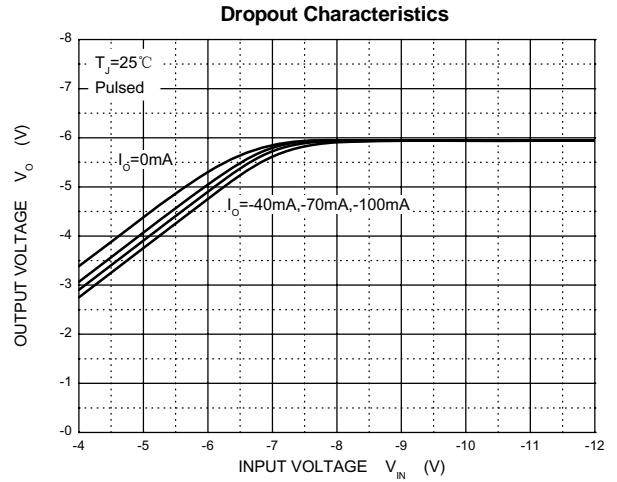
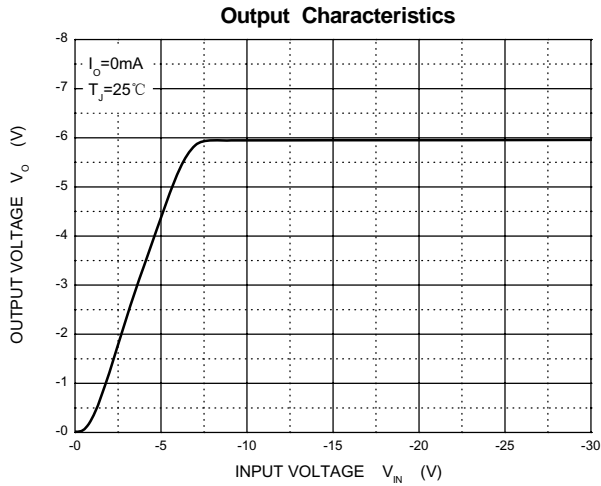
### TYPICAL APPLICATION



Note: Bypass capacitors are recommended for optimum stability and transient response and should be located as close possible to the regulators.

# Typical Characteristics

# CJ79L06



## X-ON Electronics

Largest Supplier of Electrical and Electronic Components

*Click to view similar products for [Linear Voltage Regulators](#) category:*

*Click to view products by [Changjiang](#) manufacturer:*

Other Similar products are found below :

[LV56831P-E](#) [LV5684PVD-XH](#) [MCDTSA6-2R](#) [L7815ACV-DG](#) [PQ3DZ53U](#) [LV56801P-E](#) [TLE42794G](#) [L78L05CZ/1SX](#) [L78LR05DL-MA-E](#) [636416C](#) [714954EB](#) [BA033LBSG2-TR](#) [LV5680P-E](#) [L78M15CV-DG](#) [TLS202B1MBV33HTSA1](#) [L79M05T-E](#) [TLS202A1MBVHTSA1](#) [L78LR05D-MA-E](#) [NCV317MBTG](#) [NTE7227](#) [LV5680NPVC-XH](#) [LT1054CN8](#) [MP2018GZD-5-Z](#) [MP2018GZD-33-Z](#) [MIC5281-3.3YMM](#) [RT9078-28GQZ](#) [MC78L06BP-AP](#) [TA48LS05F\(TE85L,F\)](#) [TC47BR5003ECT](#) [TCR2LN12,LF\(S](#) [TCR2LN28,LF\(S](#) [TCR2LN30,LF\(S](#) [TCR3DF295,LM\(CT](#) [TCR3DF40,LM\(CT](#) [BA178M20CP-E2](#) [L78M12ABDT](#) [LR645N3-G-P003](#) [LR645N3-G-P013](#) [ZXTR2005P5-13](#) [SCD7812BTG](#) [TCR3DF335,LM\(CT](#) [TLE42994E V33](#) [ZXTR2008K-13](#) [ZXTR2005K-13](#) [L88R05DL-E](#) [ADP3300ARTZ-2.7RL7](#) [LM120K-15/883](#) [IFX54441LDVXUMA1](#) [LM317D2T-TR](#) [LM350T/NOPB](#)