



ZOS-T1405-A02-F6(ZD)

Optical Sensor black

Transistor Output

Descriptions

The ZOS-T1405-A02-F6(ZD) is a photorrupter high-performance standard type, combines high-output GaAIAs IRED with high sensitive phototransistor.

Features

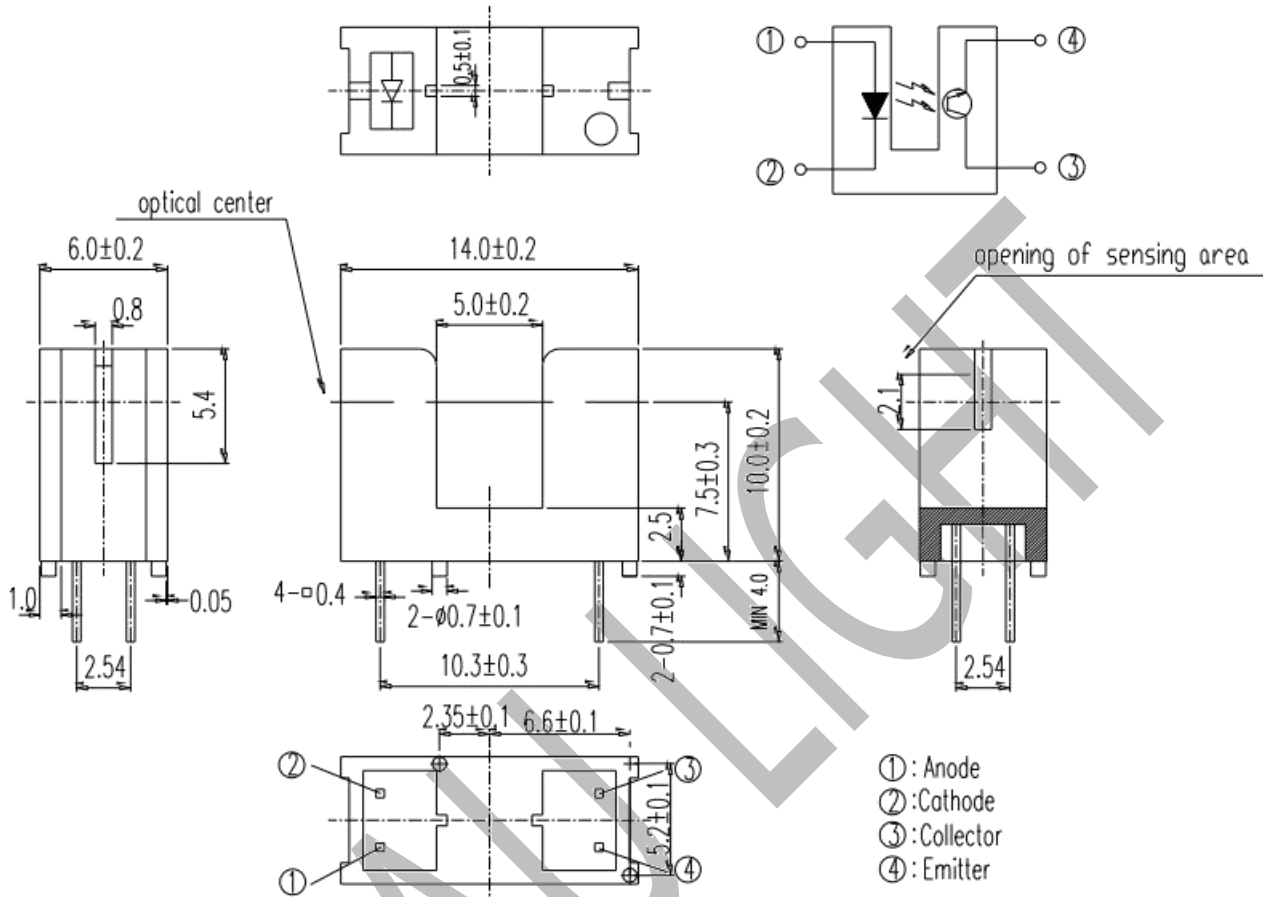
- Fast response time
- High analytic
- Cut-off visible wavelength $\lambda_p=940\text{nm}$
- High sensitivity
- Pb free
- This product itself will remain within RoHS compliant version

Applications

- Printers
- Switch Scanner
- Floppy disk driver
- Non-contact Switching
- For Direct Board



Package Dimension



Notes:

1. All dimensions are in millimeters.
2. Tolerances unless dimensions ± 0.3 mm.
3. Lead spacing is measured where the lead emerge from the package.



Absolute Maximum Ratings(Ta=25°C)

Parameter (Ta=25°C)		Symbo	Ratings	Unit
Input (Emitter)	Power Dissipation at(or Below)25°C Free Air Temperature	Pd	75	mW
	Reverse Voltage	V _R	5	V
	Forward Current	I _F	50	mA
	Peak Forward Current*1 (Pulse width≤100μs, Duty cycle=1%)	I _{FP}	1	A
Output (Detector)	Collector Power Dissipation	Pd	75	mW
	Collector Current	I _C	20	mA
	Collector-Emitter Voltage	V _{CEO}	30	V
	Emitter-Collector Voltage	V _{ECO}	5	V
Operating Temperature		T _{OPR}	-25~+85	°C
Storage Temperature		T _{STG}	-40~+100	°C
Lead Soldering Temperature *2mm from body for 5 seconds)		T _{SOL}	260	°C

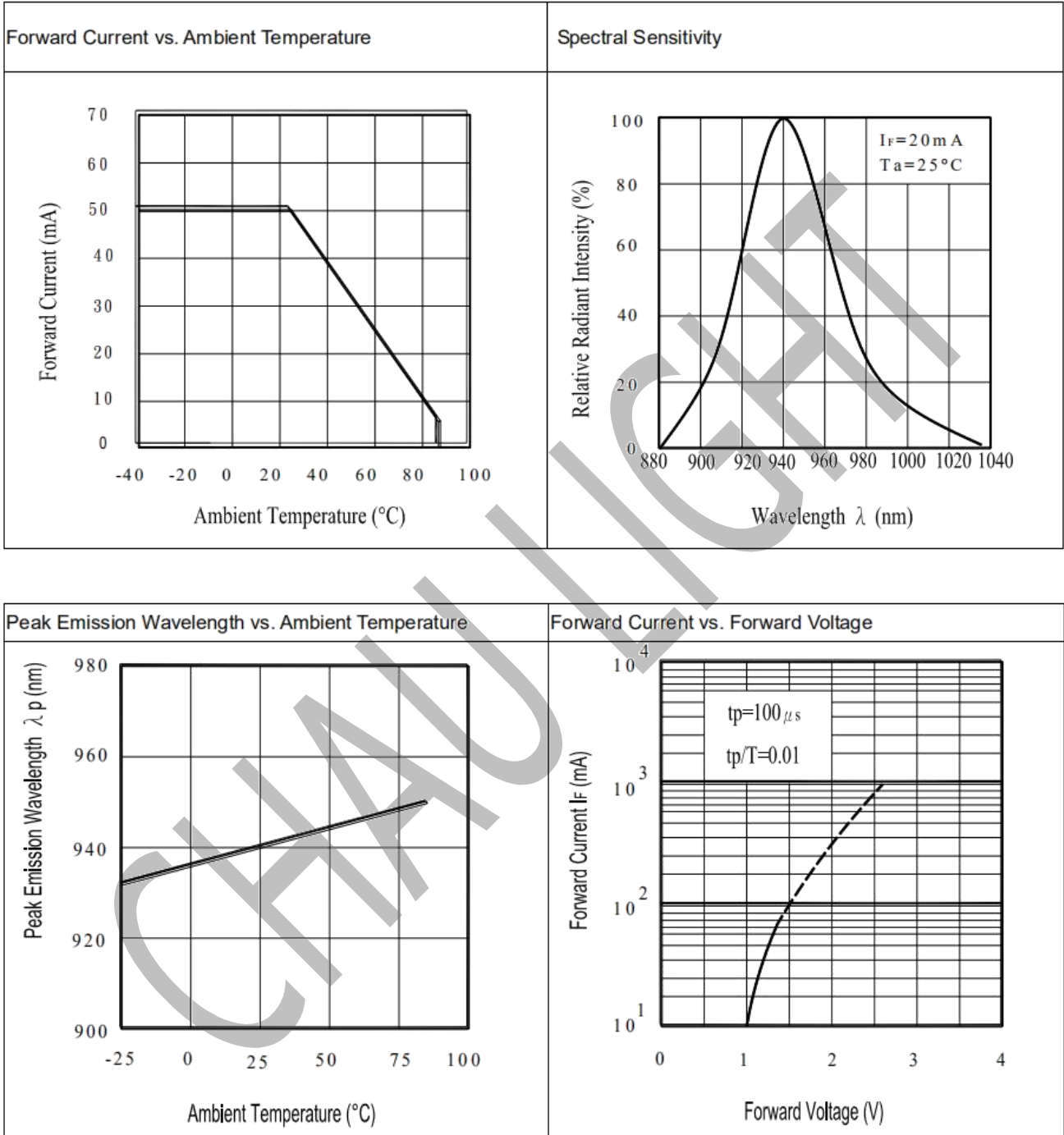
(*1) tw=100 μsec. , T=10 msec. (*2) t=5 Sec

Electro-Optical Characteristics (Ta=25°C)

Parameter (Ta=25°C)		Symbo	Min.	Typ.	Max.	Unit	Conditions
Input (Emitter)	Forward Voltage	V _F	--	1.2	1.5	V	I _F =20mA
	Reverse Current	I _R	--	--	10	μA	V _R =5V
	Peak Wavelength	λ _p	--	940	--	nm	I _F =20mA
Output (Detector)	Dark Current	I _{CEO}	--	--	100	nA	V _{CE} =20V, Ee=0mW/cm ²
	C-E Saturation Voltage	V _{CE(sat)}	--	--	0.4	V	I _C =2mA, Ee=1mW/cm ²
Transfer Characteristics	Collect Current	I _{C(ON)}	0.5	--	--	mA	V _{CE} =5V, I _F =20mA
	Rise time	t _r	--	15	--	μS	V _{CE} =5V, I _C =1mA, R _L =1KΩ
	Fall time	t _f	--	15	--	μS	V _{CE} =5V, I _C =1mA, R _L =1KΩ

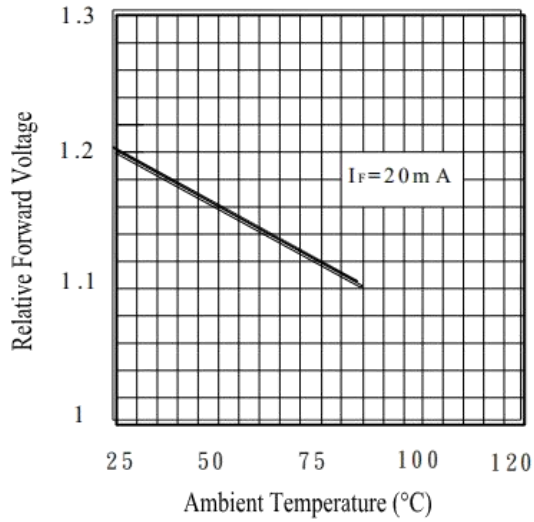


Typical Electrical/Optical/Characteristics Curves for IR

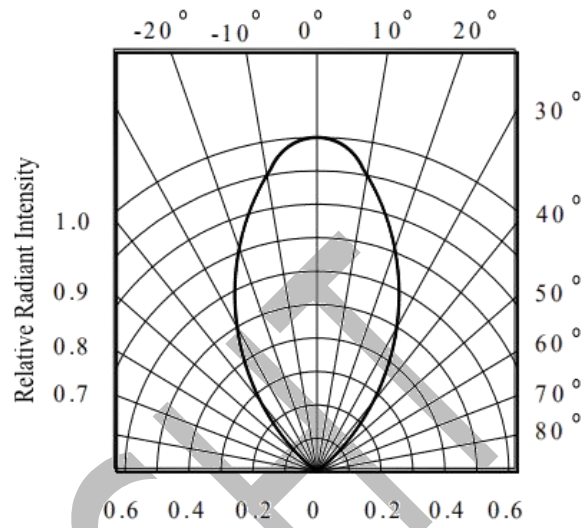




Forward Current Voltage vs. Ambient Temperature

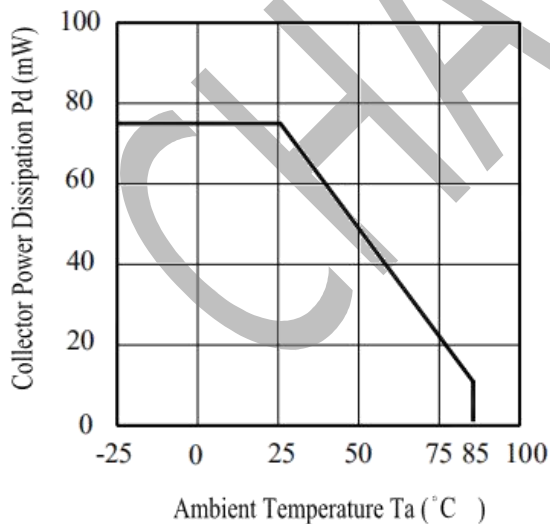


Relative Radiant Intensity vs. Angular Displacement

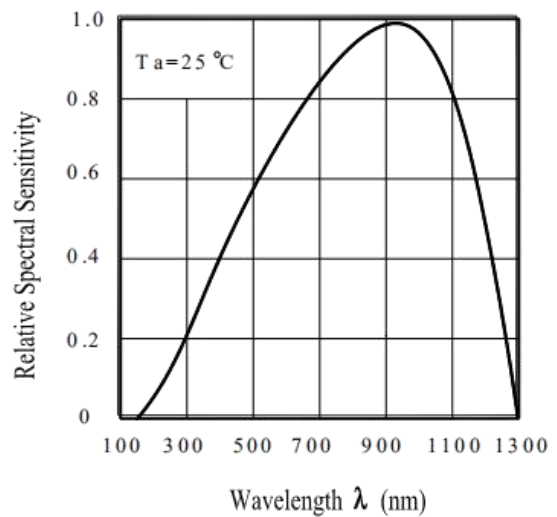


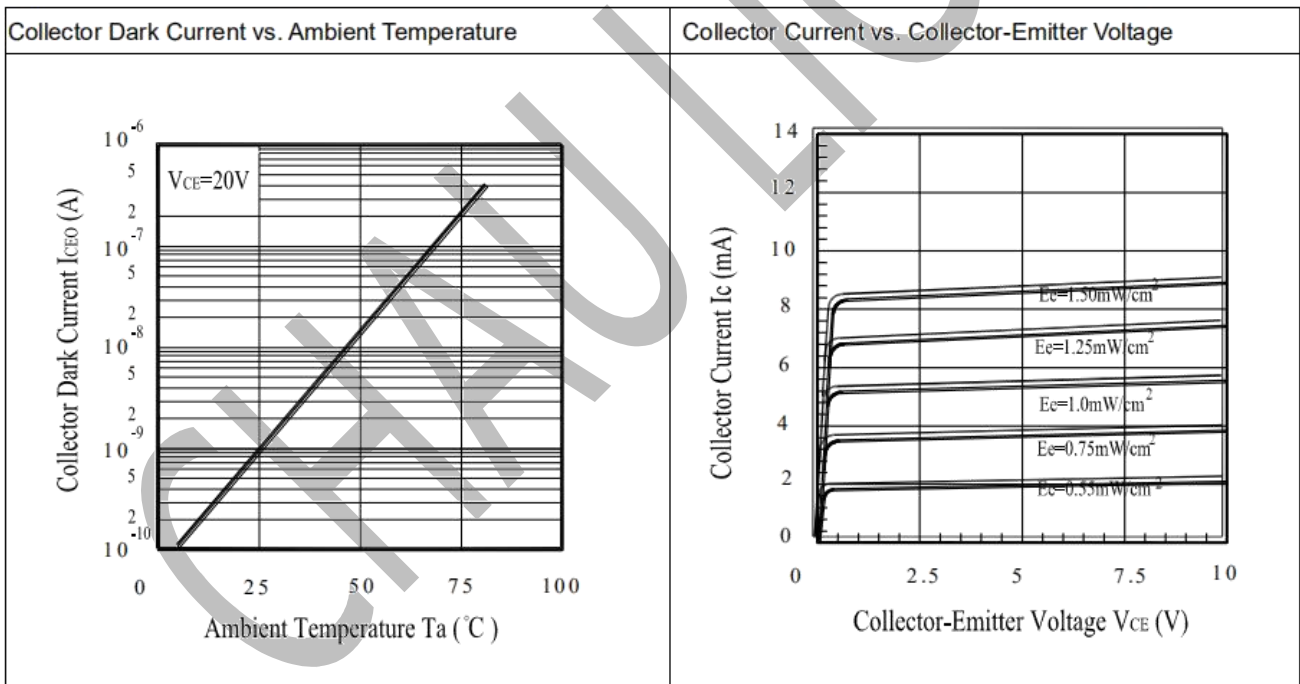
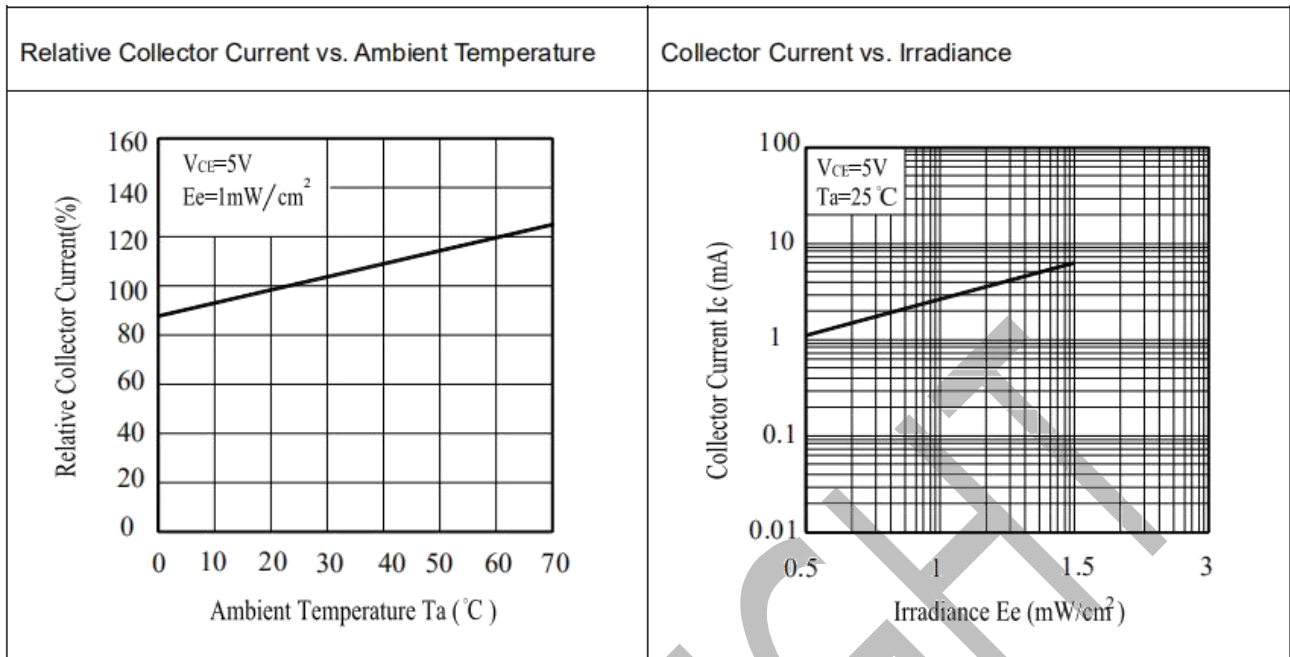
Typical Electrical/Optical/Characteristics Curves for PT

Collector Power Dissipation vs. Ambient Temperature



Spectral Sensitivity





Packing Quantity Specification

- 1.150PCS//1Bag
- 2.4Bag/1box
- 2. 10bos/1Carton

X-ON Electronics

Largest Supplier of Electrical and Electronic Components

Click to view similar products for [Optical Switches, Transmissive, Phototransistor Output](#) *category:*

Click to view products by [Chau Light](#) *manufacturer:*

Other Similar products are found below :

[LTH-301-07](#) [LTH-301-23](#) [LTH-306-02](#) [LTH-306-64](#) [E3C-X2C](#) [E3S-LS20B4S1](#) [E3SX2CE4](#) [EESPW301](#) [EE-SX872R](#) [EE-SX950P-W 1M](#)
[EE-SX952-R 3M](#) [RPI-0125B](#) [RPI-2501](#) [RPI-576A](#) [LTH-306-04M](#) [HOA0865-100](#) [HOA1961-055](#) [RPI-124](#) [E3F-3C4](#) [EE-SPX305-W2A 2M](#)
[EE-SX953-W 3M](#) [EE-SX972P-C1](#) [LTH-306-01](#) [EE-SX670B](#) [EE-SX771R 5M](#) [RPI-574](#) [ZGY1602\(ITR\)](#) [EESX677C1JR01M](#) [EESX971PC1](#)
[HOA1883-501](#) [EE-SX970P-C1](#) [EE-SX976-C1](#) [RPI-125](#) [RPI-243](#) [EE-SX1061](#) [EE-SX153](#) [EE-SX675P-WR 1M](#) [EE-SX971-C1](#) [OPB853A3](#)
[GP1S396HCP0F](#) [EE-SX1128](#) [OPB857Z](#) [EE-SV3-B](#) [EE-SJ3-D](#) [RPI-0226](#) [ITR8307](#) [EE-SX671P-WR 1M](#) [EE-SX675P](#) [EE-SX951P-W 1M](#)
[EE-SX672R](#)